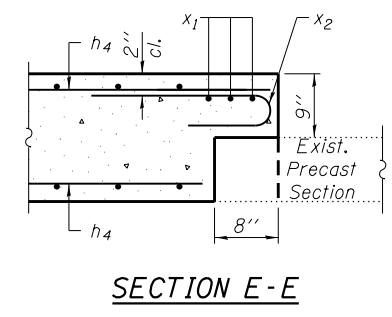
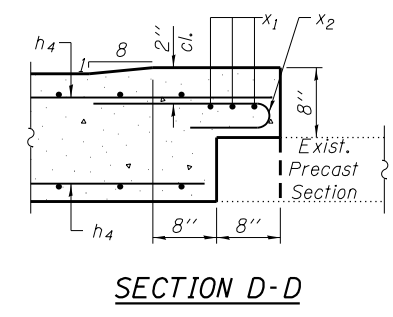
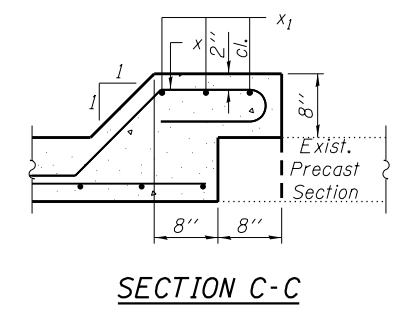
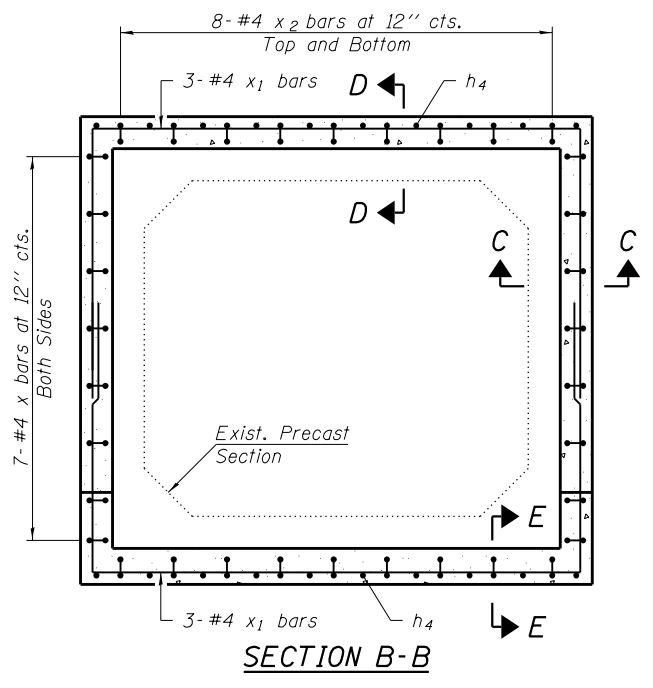
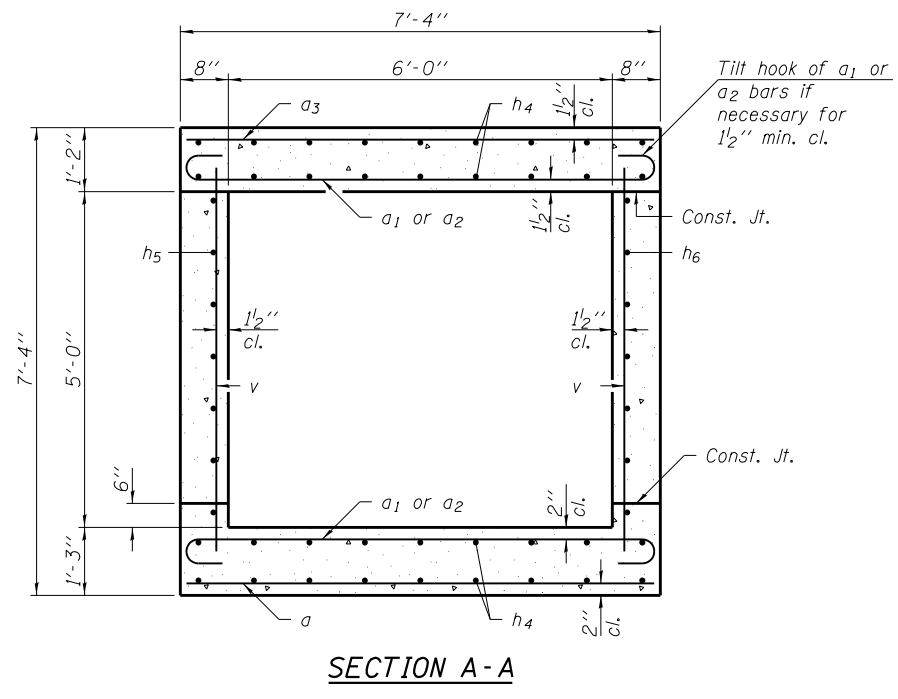


**LONGITUDINAL SECTION**

\* Cut and/or bend bars to fit.  
\*\* 6- #5 h<sub>5</sub> bars at 12" cts., N. Wall  
6- #5 h<sub>6</sub> bars at 12" cts., S. Wall



Notes:  
For Plan, see sheet 1 of 4.  
For Sloped Tapered Inlet Details, see sheets 3 & 4 of 4.  
For bar bending diagrams and Bill of Material, see sheet 4 of 4.  
For flowline elevations not shown, see roadway cross-sections.

LAST SAVED = 1/23/2013  
PEN TABLE = W2-44-141  
PLOT DRIVER = pdfNCLAYERS=dlctfg

FILE NAME =	USER NAME = elagemann	DESIGNED K.A. Klues	REVISED -
1:\1001100\Phase II - 76817\Cad\S\Plans\Headwalls-76817.dgn		DRAWN K.A. Klues	REVISED -
		CHECKED E.M. Lagemann	REVISED -
PLOT SCALE = 0:2.0000 '1' / in.		DATE 01/17/2013	REVISED -
PLOT DATE = 1/23/2013 11:46:31 AM			

STATE OF ILLINOIS  
DEPARTMENT OF TRANSPORTATION

HORNER &  
SHIRIN, INC.  
ENGINEERS

DOWNSTREAM APRON DETAILS  
CULVERT AT STA. 2130+98.50

SCALE: SHEET NO. 2 OF 4 SHEETS STA. 2129+64.94 TO STA. 2131+84.96

F.A.P. R.E.	SECTION	COUNTY	TOTAL SHEETS	SHEET NO.
312	68-WRS-1	MONROE	760	450
CONTRACT NO. 76817			ILLINOIS FED. AID PROJECT	