

STA. 2083+50.01 IL. ROUTE 3 =  
STA. 20+00.00 ILLINOIS AVENUE

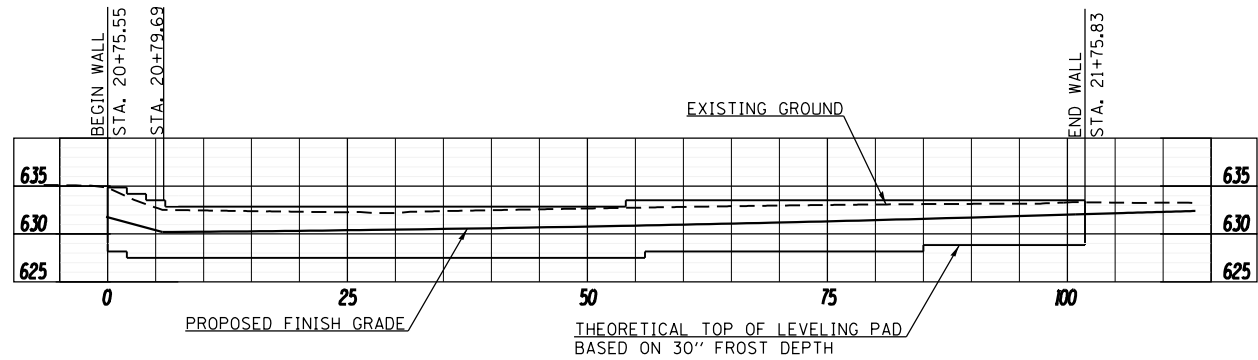
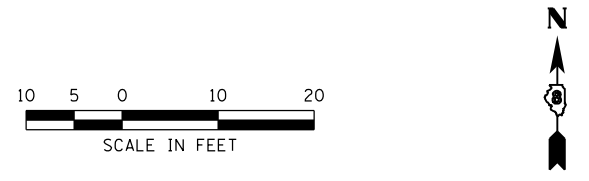
20+00

21

22

ILLINOIS AVENUE

ILLINOIS ROUTE 3  
23802



LAST SAVED = 1/25/2013 10:44:41 AM  
 PEN TABLE = V:\PEN\PLT.tbl  
 PLOT DRIVER = pdfplotlayers.plt

FILE NAME = AGGREGATE DITCH.dgn	USER NAME = JLM	DESIGNED - KCM	REVISED -
		DRAWN - JLM	REVISED -
		CHECKED - TMM	REVISED -
		DATE -	REVISED -
	PLOT DATE = 3:35:07 PM		

STATE OF ILLINOIS  
DEPARTMENT OF TRANSPORTATION

**HORNER & SHIRIN, INC.**  
ENGINEERS

**MISCELLANEOUS DETAILS**  
ILLINOIS AVENUE SEGMENTAL CONCRETE BLOCK WALL DETAILS

F.A.P. RTE. 312	SECTION 68-WRS-1	COUNTY MONROE	TOTAL SHEETS 760	SHEET NO. 480
CONTRACT NO. 76817				
FED. ROAD DIST. NO. ILLINOIS FED. AID PROJECT				

SCALE: NONE SHEET NO. 16 OF 22 SHEETS STA. TO STA.