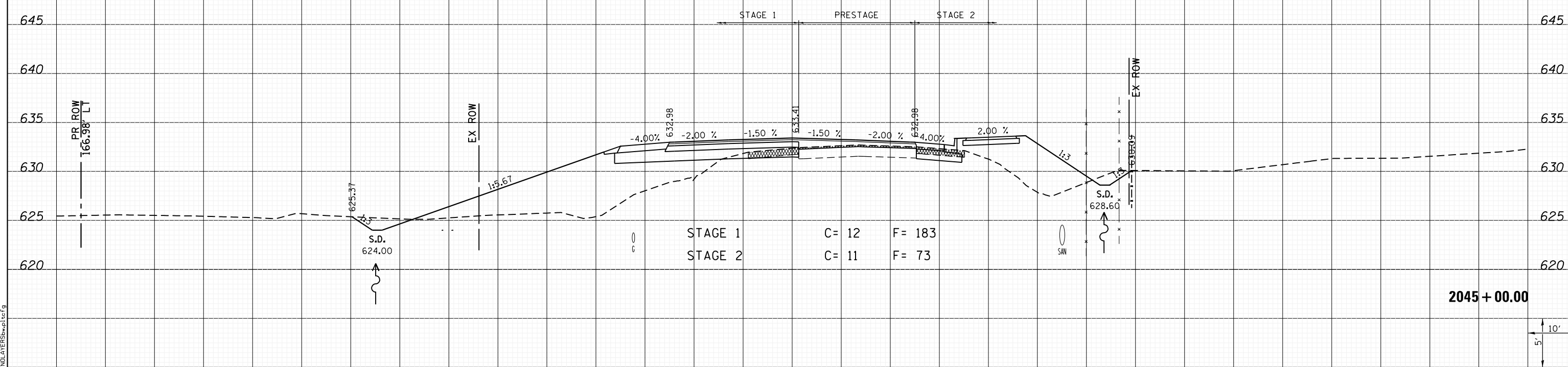
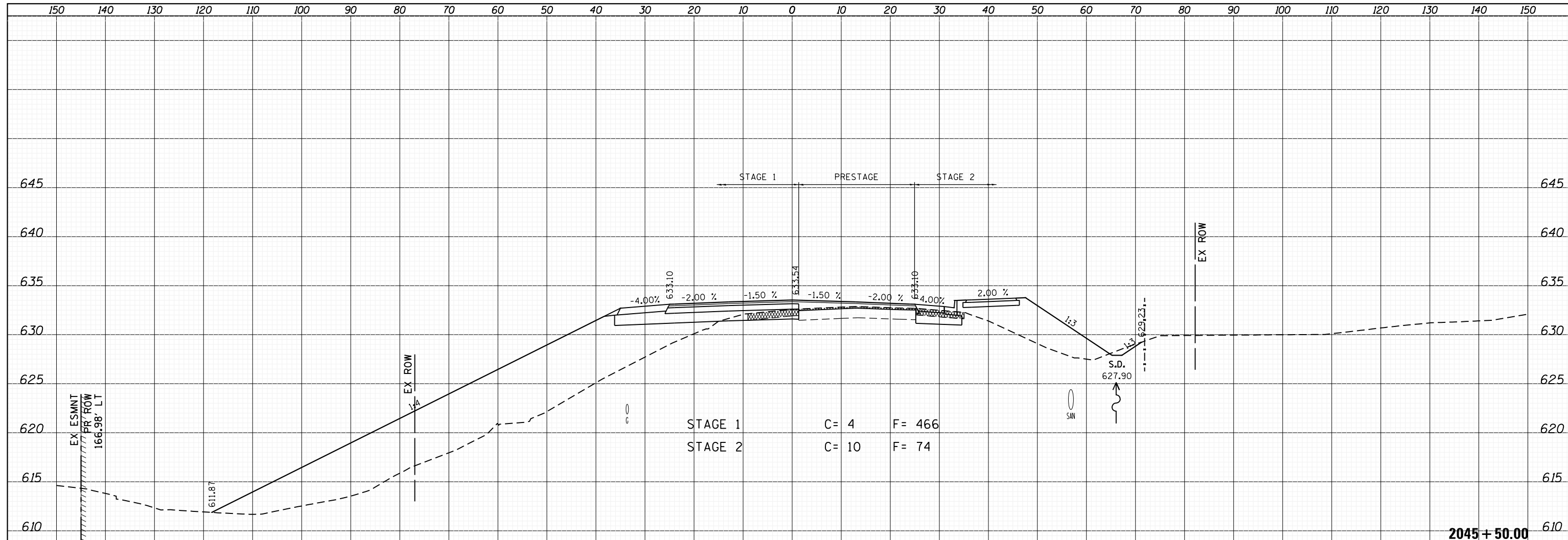


DATE	
BY	
SURVEYED	
PLOTTED	
TEMPLATE	
NOTE BOOK	
AREAS CHECKED	
NO.	

DATE	
BY	
SURVEYED	
PLOTTED	
TEMPLATE	
NOTE BOOK	
AREAS CHECKED	
NO.	



LAST SAVED = 1/25/2013
 PEN TABLE = 161-hat.rdi
 PLOT DRIVER = batplotter.bat

FILE NAME =	USER NAME = kakluos	DESIGNED -	REVISIED -	STATE OF ILLINOIS DEPARTMENT OF TRANSPORTATION		CROSS SECTIONS		F.A.P. RTE.	SECTION	COUNTY	TOTAL SHEETS	SHEET NO.
I:\1001100\Phase II - 76817\Cad\T\Plans\300.08	76817-sh1-IL3-xssht.dgn	DRAWN -	REVISIED -			312	68-WRS-1	MONROE	760	549		
PLOT SCALE = 20.0000' / in.	CHECKED -	REVISIED -	REVISIED -			CONTRACT NO. 76817						
PLOT DATE = 1/25/2013 4:54:35 PM	DATE -	REVISIED -	REVISIED -			ILLINOIS FED. AID PROJECT						
SCALE:					SHEET 63 OF 197 SHEETS		STA. 2045+00.00 TO STA. 2045+50.00					