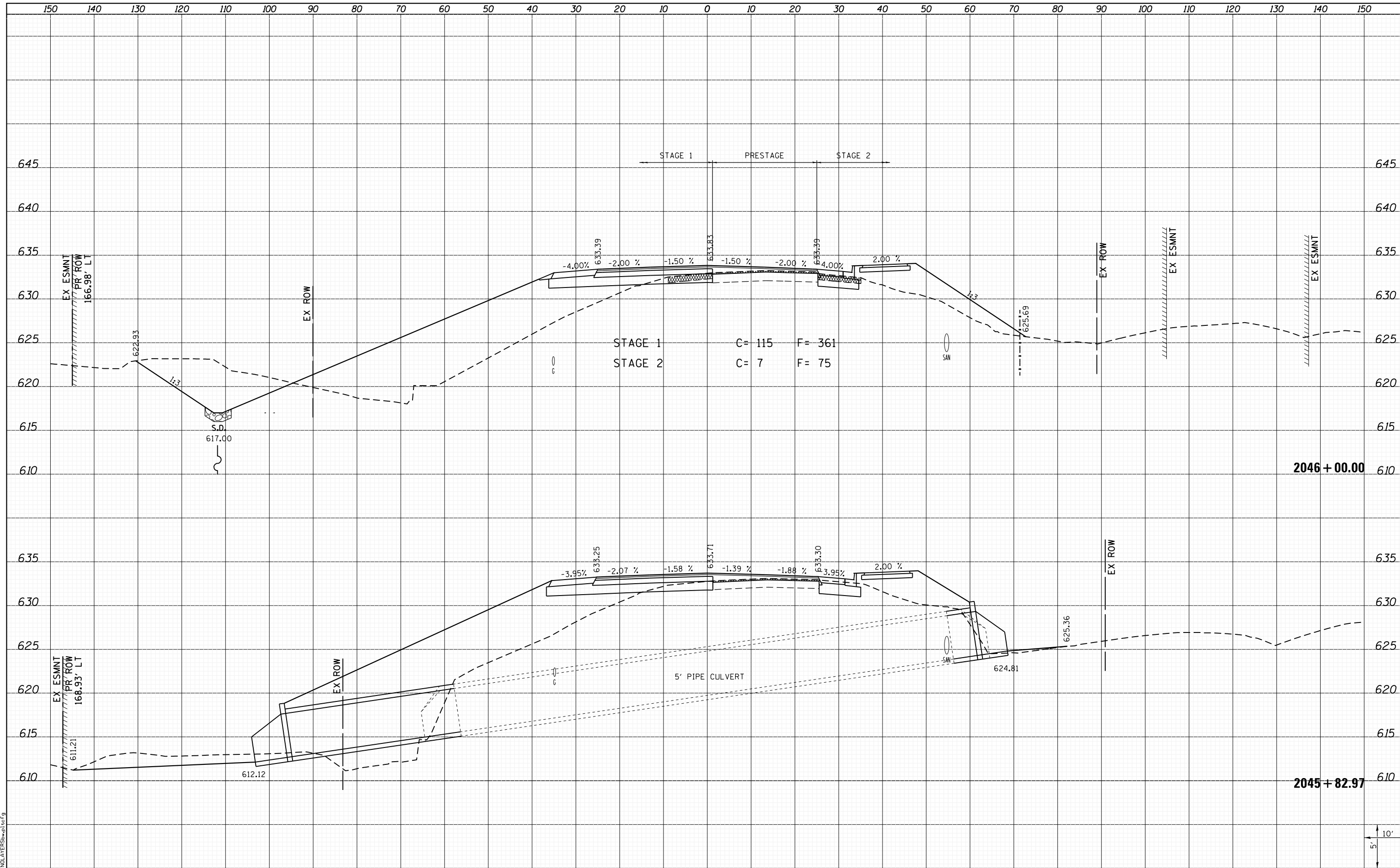


DATE	
BY	
SURVEYED	
PLOTTED	
TEMPLATE	
NOTE BOOK	
AREAS CHECKED	
NO.	

DATE	
BY	
SURVEYED	
PLOTTED	
TEMPLATE	
NOTE BOOK	
AREAS CHECKED	
NO.	



LAST SAVED = 1/25/2013
 PEN TABLE = 161-hat.tbl
 PLOT DRIVER = pdfplotter.exe

FILE NAME = I:\1001100\Phase II - 76817\Cad\T\Plans\300.08	USER NAME = kaklues	DESIGNED -	REVISD -
	76817-sh1-IL3-xssht.dgn	DRAWN -	REVISD -
	PLOT SCALE = 20.0000' / in.	CHECKED -	REVISD -
	PLOT DATE = 1/25/2013 4:54:40 PM	DATE -	REVISD -

**STATE OF ILLINOIS
 DEPARTMENT OF TRANSPORTATION**



**CROSS SECTIONS
 IL ROUTE 3**

SCALE: SHEET 64 OF 197 SHEETS STA. 2045+82.97 TO STA. 2046+00.00

F.A.P. RTE. 312	SECTION 68-WRS-1	COUNTY MONROE	TOTAL SHEETS 760	SHEET NO. 550
			CONTRACT NO. 76817	
ILLINOIS FED. AID PROJECT				