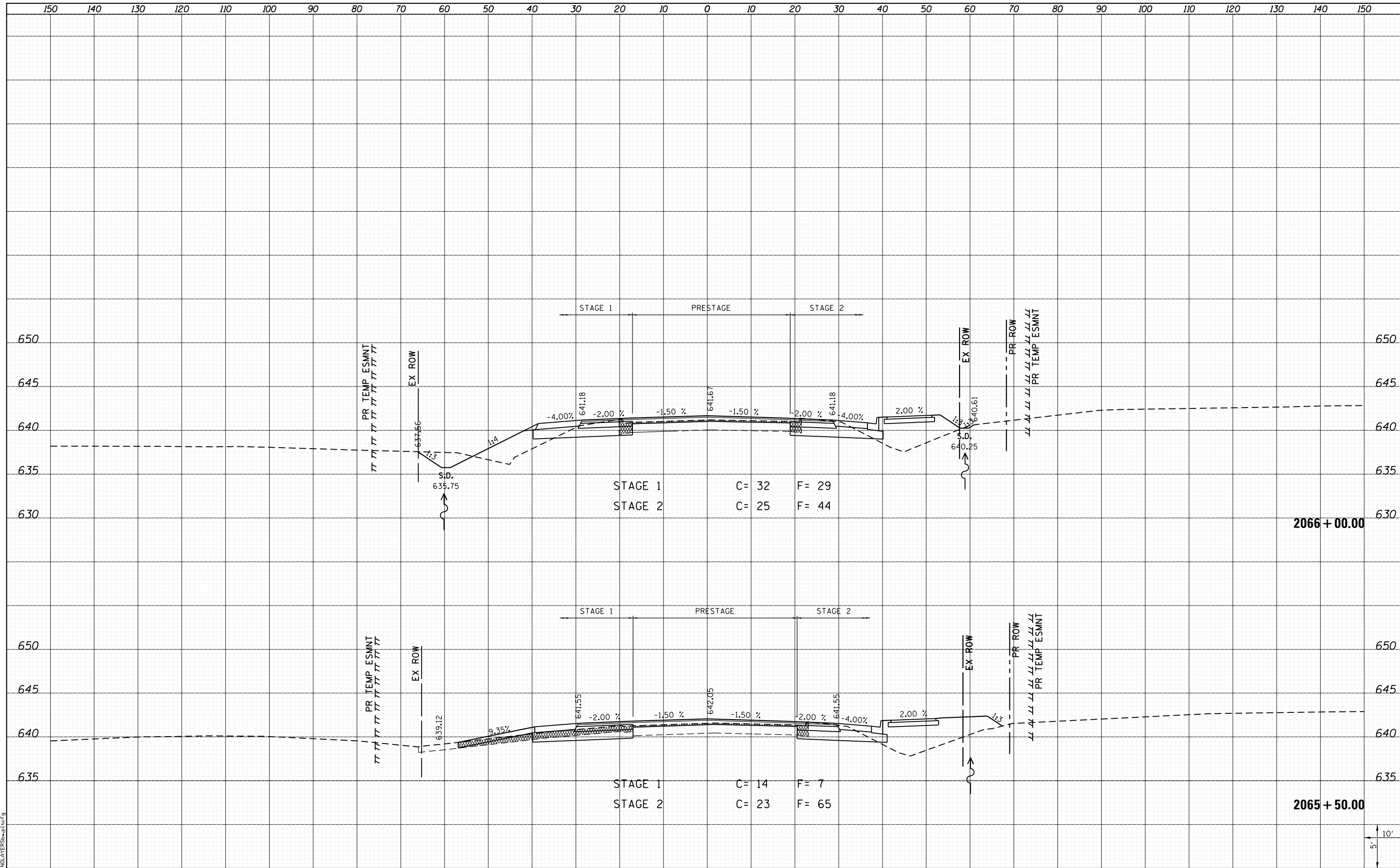


DATE	
BY	
SURVEYED	
PLOTTED	
TEMPLATE	
NOTE BOOK	
AREAS CHECKED	
NO.	

DATE	
BY	
SURVEYED	
PLOTTED	
TEMPLATE	
NOTE BOOK	
AREAS CHECKED	
NO.	

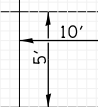


STAGE 1 C = 32 F = 29  
 STAGE 2 C = 25 F = 44

STAGE 1 C = 14 F = 7  
 STAGE 2 C = 23 F = 65

2066 + 00.00

2065 + 50.00



LAST SAVED = 1/25/2013  
 PEN TABLE = 161-hat.tbl  
 PLOT DRIVER = PdfPlotterSW.bat

FILE NAME = I:\10011001\Phase II - 76817\Cad\T\Plans\300.08	USER NAME = kakluos	DESIGNED -	REVISIED -
	76817-sh1-IL3-xssht.dgn	DRAWN -	REVISIED -
	PLOT SCALE = 20.0000' / in.	CHECKED -	REVISIED -
	PLOT DATE = 1/25/2013 4:56:14 PM	DATE -	REVISIED -

STATE OF ILLINOIS  
 DEPARTMENT OF TRANSPORTATION



CROSS SECTIONS  
 IL ROUTE 3

SCALE: SHEET 83 OF 197 SHEETS STA. 2065+50.00 TO STA. 2066+00.00

F.A.P. RTE.	SECTION	COUNTY	TOTAL SHEETS	SHEET NO.
312	68-WRS-1	MONROE	760	569
				CONTRACT NO. 76817
ILLINOIS FED. AID PROJECT				