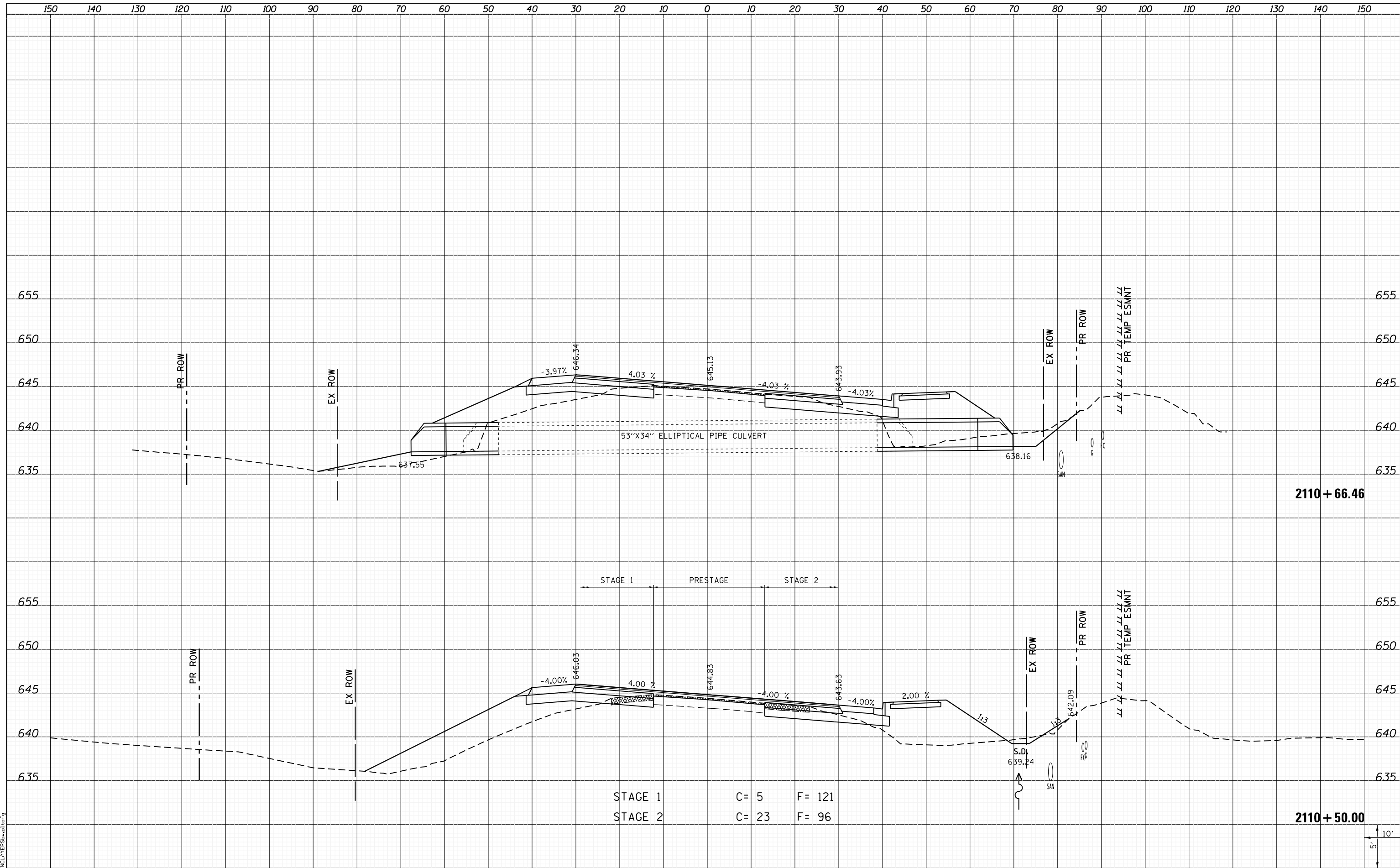


DATE	
BY	
FINAL SURVEY	SURVEYED
NOTE BOOK	PLOTTED
NO.	TEMPLATE
	AREAS
	CHECKED

DATE	
BY	
ORIGINAL SURVEY	SURVEYED
NOTE BOOK	PLOTTED
NO.	TEMPLATE
	AREAS
	CHECKED



LAST SAVED = 1/25/2013  
 PEN TABLE = 161-HA17-01  
 PLOT DRIVER = PLOTCLATER50wplc169

FILE NAME = I:\10011000\Phase II - 76817\Cad\T\Plans\300.08	USER NAME = kakluos	DESIGNED -	REVISIED -
I:\10011000\Phase II - 76817\Cad\T\Plans\300.08	76817-sh1-IL3-xssht.dgn	DRAWN -	REVISIED -
	PLOT SCALE = 20.0000' / in.	CHECKED -	REVISIED -
	PLOT DATE = 1/25/2013 5:00:27 PM	DATE -	REVISIED -

**STATE OF ILLINOIS  
 DEPARTMENT OF TRANSPORTATION**



**CROSS SECTIONS  
 IL ROUTE 3**

SCALE: SHEET 131 OF 197 SHEETS STA. 2110+50.00 TO STA. 2110+66.46

F.A.P. RTE.	SECTION	COUNTY	TOTAL SHEETS	SHEET NO.
312	68-WRS-1	MONROE	760	617
CONTRACT NO. 76817			ILLINOIS FED. AID PROJECT	