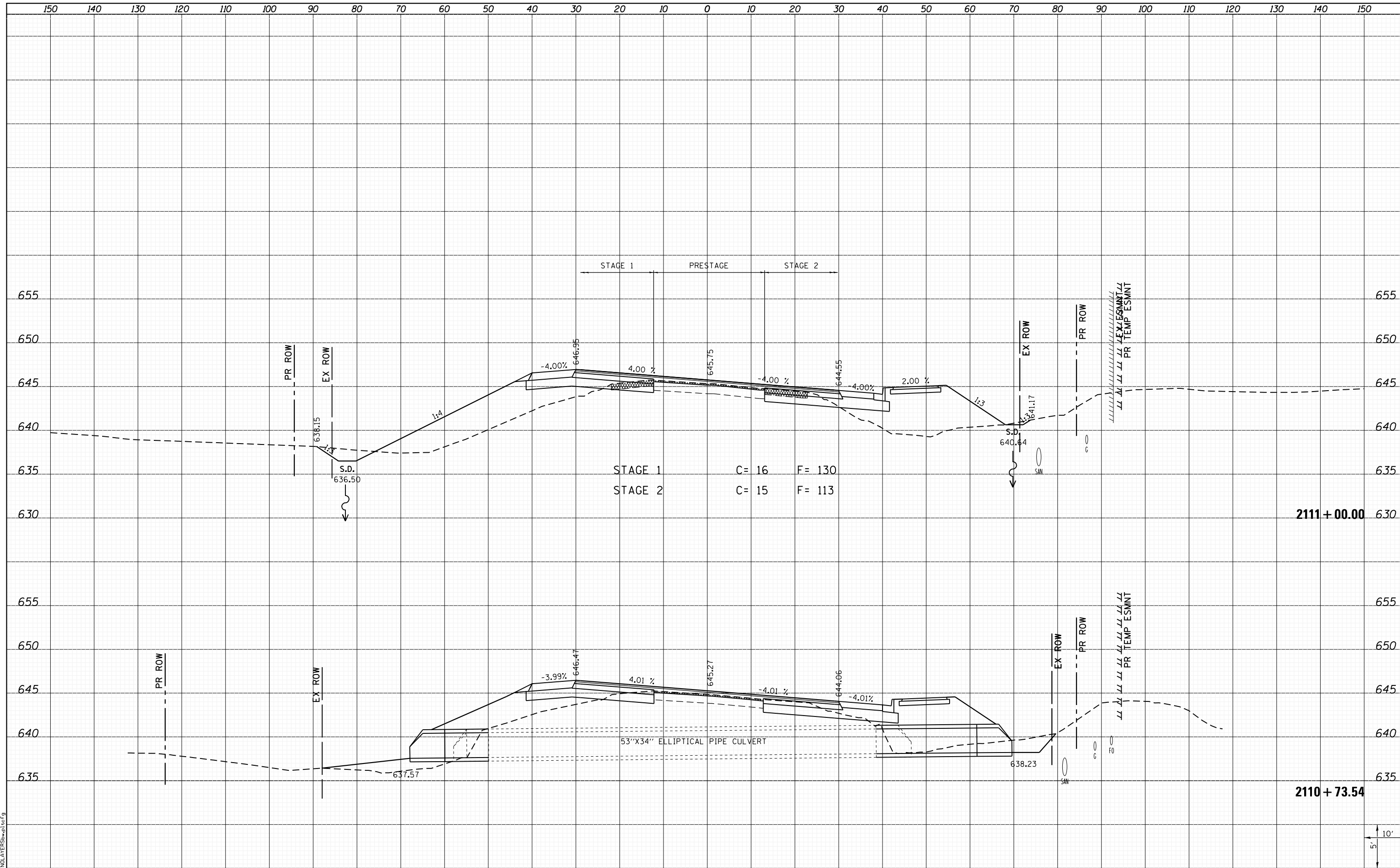


DATE	
BY	
FINAL SURVEY	SURVEYED
NOTE BOOK	PLOTTED
NO.	TEMPLATE
	AREAS
	CHECKED

DATE	
BY	
ORIGINAL SURVEY	SURVEYED
NOTE BOOK	PLOTTED
NO.	TEMPLATE
	AREAS
	CHECKED



LAST SAVED = 1/25/2013
 PEN TABLE = 161-hat.tbl
 PLOT DRIVER = pdfplotter.exe

FILE NAME = I:\10011001\Phase II - 76817\Cad\T\Plans\300.08	USER NAME = kakluos	DESIGNED -	REVISD -
	76817-sh1-IL3-xssht.dgn	DRAWN -	REVISD -
	PLOT SCALE = 20.0000' / in.	CHECKED -	REVISD -
	PLOT DATE = 1/25/2013 5:00:32 PM	DATE -	REVISD -

**STATE OF ILLINOIS
 DEPARTMENT OF TRANSPORTATION**



CROSS SECTIONS
 IL ROUTE 3
 SCALE: SHEET 132 OF 197 SHEETS STA. 2110+73.54 TO STA. 2111+00.00

F.A.P. RTE.	SECTION	COUNTY	TOTAL SHEETS	SHEET NO.
312	68-WRS-1	MONROE	760	618
CONTRACT NO. 76817				
ILLINOIS FED. AID PROJECT				

