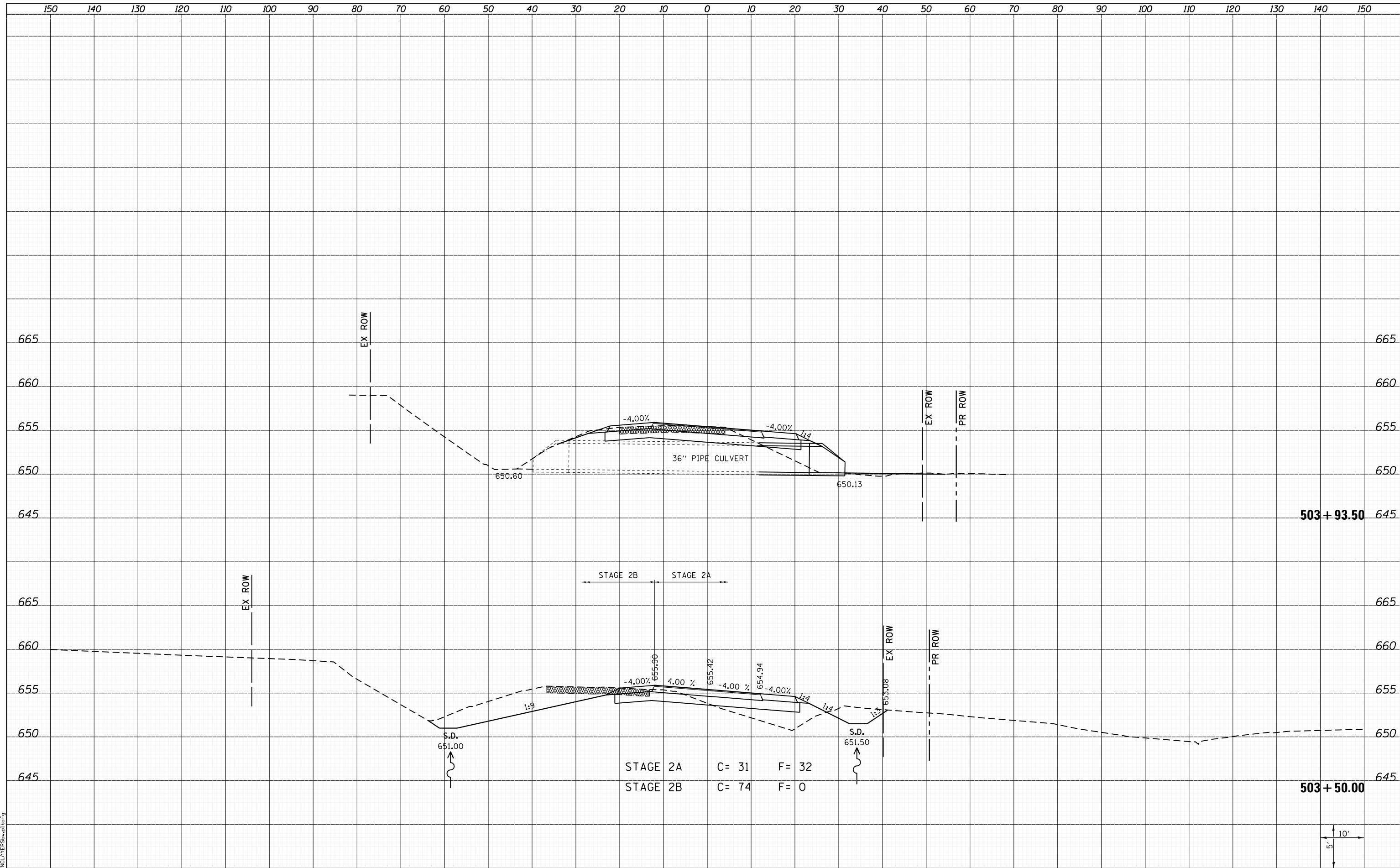


DATE	
BY	
SURVEYED	
PLOTTED	
TEMPLATE	
AREAS	
CHECKED	
NO.	

DATE	
BY	
SURVEYED	
PLOTTED	
TEMPLATE	
AREAS	
CHECKED	
NO.	



LAST SAVED = 1/22/2013 5:06:35 PM  
 PEN TABLE = 161-hat.tbl  
 PLOT DRIVER = pdfplotter.exe

FILE NAME = I:\10011001\Phase II - 76817\Cad\T\Plans\308.08	USER NAME = kakluos	DESIGNED -	REVISD -
I:\10011001\Phase II - 76817\Cad\T\Plans\308.08	76817-shr-GallMoore-xssht.dgn	DRAWN -	REVISD -
	PLOT SCALE = 20.0000' / in.	CHECKED -	REVISD -
	PLOT DATE = 1/25/2013 5:06:35 PM	DATE -	REVISD -

STATE OF ILLINOIS  
 DEPARTMENT OF TRANSPORTATION



CROSS SECTIONS  
 GALL RD./NORTH MOORE ST.  
 SCALE: SHEET 11 OF 13 SHEETS STA. 503+50.00 TO STA. 503+93.50

F.A.P. RTE.	SECTION	COUNTY	TOTAL SHEETS	SHEET NO.
312	68-WRS-1	MONROE	760	727
CONTRACT NO. 76817				
ILLINOIS FED. AID PROJECT				

