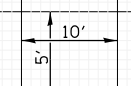
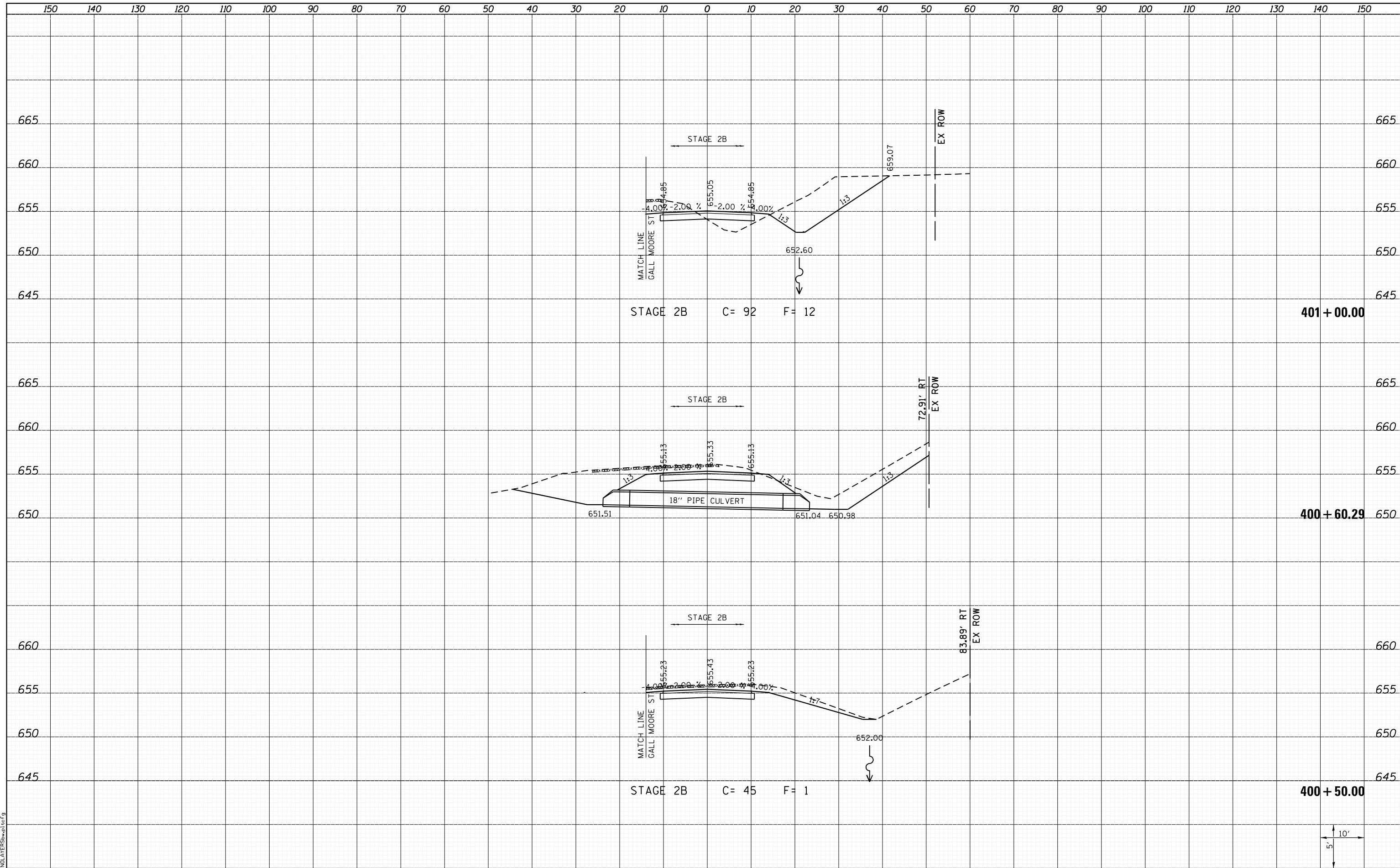


DATE	
BY	
FINAL SURVEY	SURVEYED
NOTE BOOK	PLOTTED
NO.	TEMPLATE
	AREAS
	CHECKED

DATE	
BY	
ORIGINAL SURVEY	SURVEYED
NOTE BOOK	PLOTTED
NO.	TEMPLATE
	AREAS
	CHECKED



LAST SAVED = 1/24/2013  
 PEN TABLE = VBI-Horner.dwg  
 PLOT DRIVER = B:\PLOTTERS\p1c1c9

FILE NAME = I:\1001100\Phase II - 76817\Cad\T\Plans\310.DWG  
 USER NAME = kakluos  
 6817-sh1-Baseball1.Rd-xssh.dgn  
 PLOT SCALE = 20.0000' / in.  
 PLOT DATE = 1/25/2013 5:06:44 PM

DESIGNED -	REVISIED -
DRAWN -	REVISIED -
CHECKED -	REVISIED -
DATE -	REVISIED -

**STATE OF ILLINOIS  
 DEPARTMENT OF TRANSPORTATION**



**CROSS SECTIONS  
 BASEBALL ROAD**

SCALE: SHEET 1 OF 7 SHEETS STA. 400+50.00 TO STA. 401+00.00

F.A.P. RTE.	SECTION	COUNTY	TOTAL SHEETS	SHEET NO.
312	68-WRS-1	MONROE	760	739
				CONTRACT NO. 76817
ILLINOIS FED. AID PROJECT				