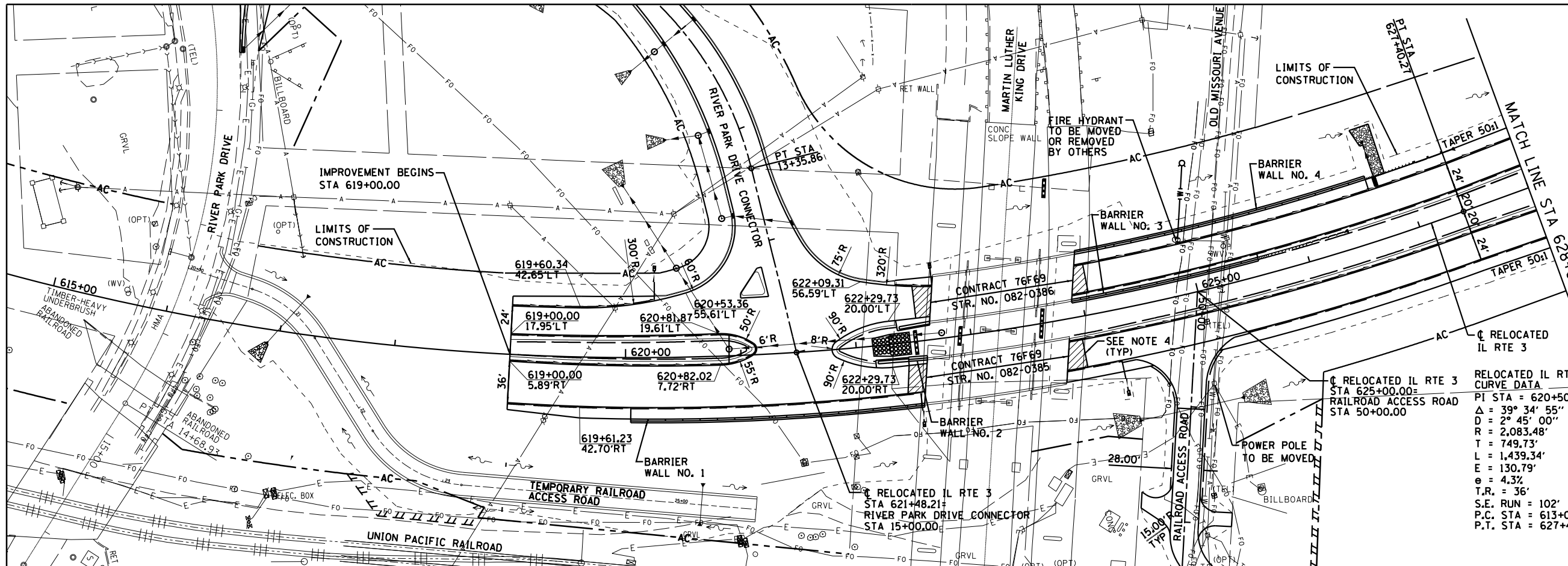
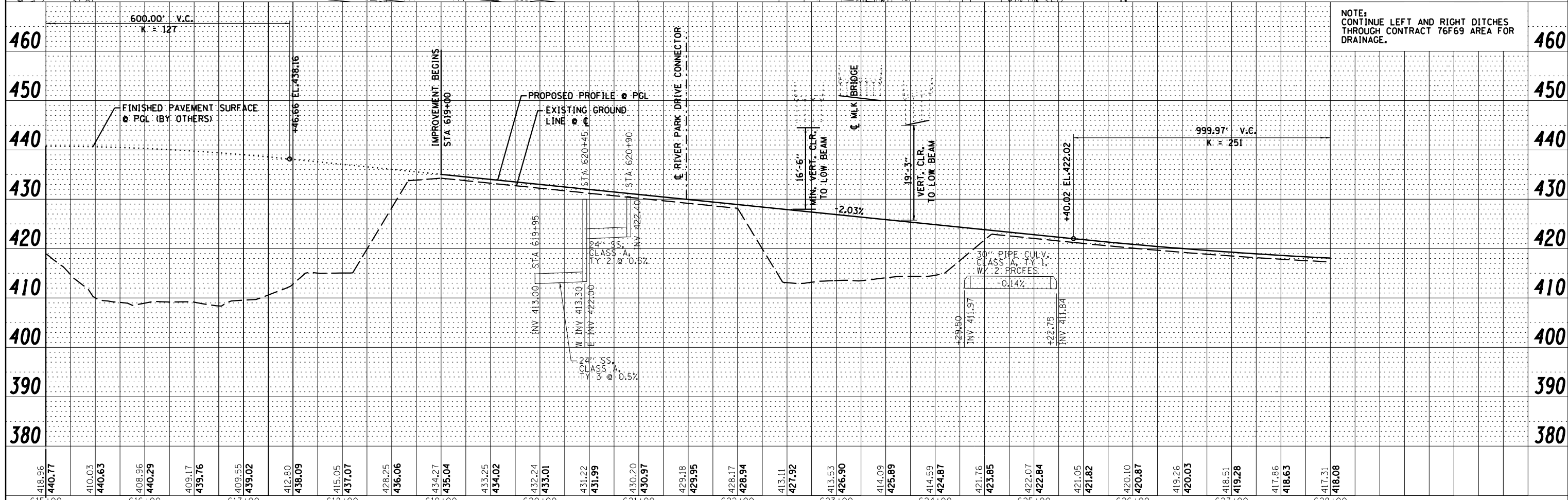
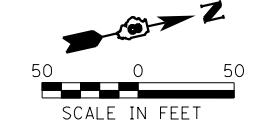


PLAN	SURVEYED	BY	DATE
	PLOTTED		
	ALIGNED		
	CHECKED		
	NO. 1		
	NO. 2		
	NO. 3		
	NO. 4		

PROFILE	SURVEYED	BY	DATE
	PLOTTED		
	GRADES		
	CHECKED		
	NO. 1		
	NO. 2		
	NO. 3		
	NO. 4		



- NOTES:**
1. THERE ARE SEVERAL FIBER OPTICS LINES IN THE AREA. THE CONTRACTOR SHALL HAND LOCATE AND EXPOSE THESE PRIOR TO EXCAVATING FOR THE PROJECT PARTICULARLY ALONG MISSOURI AVE. THIS WORK SHALL BE PAID FOR UNDER ARTICLE 109.04.
  2. CAUTION, EXISTING UTILITIES, INCLUDING FIBER OPTIC, ELECTRICAL, TELEPHONE, WATER, AERIAL LINES AND OTHER FACILITIES, ARE LOCATED WITHIN THE LIMITS OF CONSTRUCTION. THE CONTRACTOR SHALL VERIFY THE UTILITY LOCATIONS PRIOR TO CONSTRUCTION. SEE SUBSURFACE UNDERGROUND ENGINEERING PLANS FOR ADDITIONAL INFORMATION.
  3. STR. NO. 082-0385 & STR. NO. 082-0386 BY OTHERS. BARRIER WALLS AS NOTED AND GROOVING FOR PAVEMENT MARKING ON THIS CONTRACT.
  4. BRIDGE APPROACH PAVEMENT CONNECTOR. FOR DIMENSIONS SEE MISCELLANEOUS DETAILS.



**NOTE:** CONTINUE LEFT AND RIGHT DITCHES THROUGH CONTRACT 76F69 AREA FOR DRAINAGE.

<b>Farnsworth GROUP, INC.</b> 2709 McGraw Drive Bloomington, Illinois 61704 309/663-8435, 309/663-1571 fax	USER NAME = dmeyer PLOT SCALE = 100.0000' / 1"	DESIGNED - JJO DRAWN - JJO CHECKED - PJM DATE - 03/20/13	REVISED - REVISED - REVISED - REVISED -	<b>STATE OF ILLINOIS DEPARTMENT OF TRANSPORTATION</b>				<b>RELOCATED IL RTE 3 PLAN &amp; PROFILE</b>				F.A.P. RT. 788 SECTION 520-1-2 COUNTY ST. CLAIR TOTAL SHEETS 142 SHEET NO. 28 CONTRACT NO. 76850
	SCALE: SHEET NO. OF SHEETS STA. TO STA.				ILLINOIS FED. AID PROJECT				PP-1			