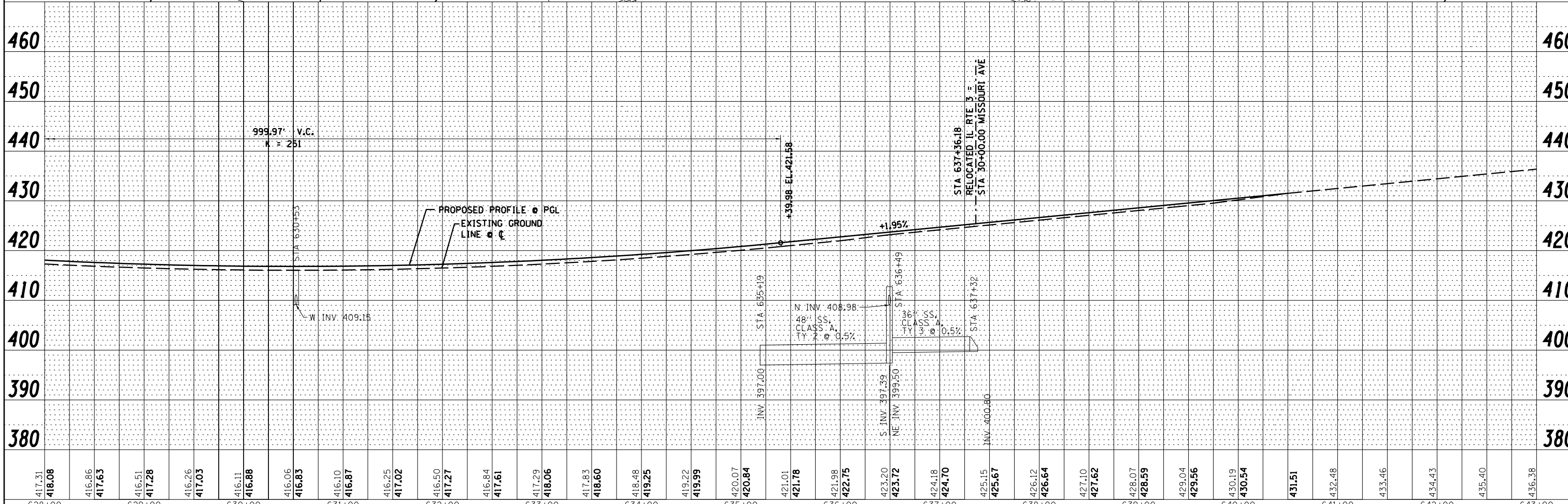
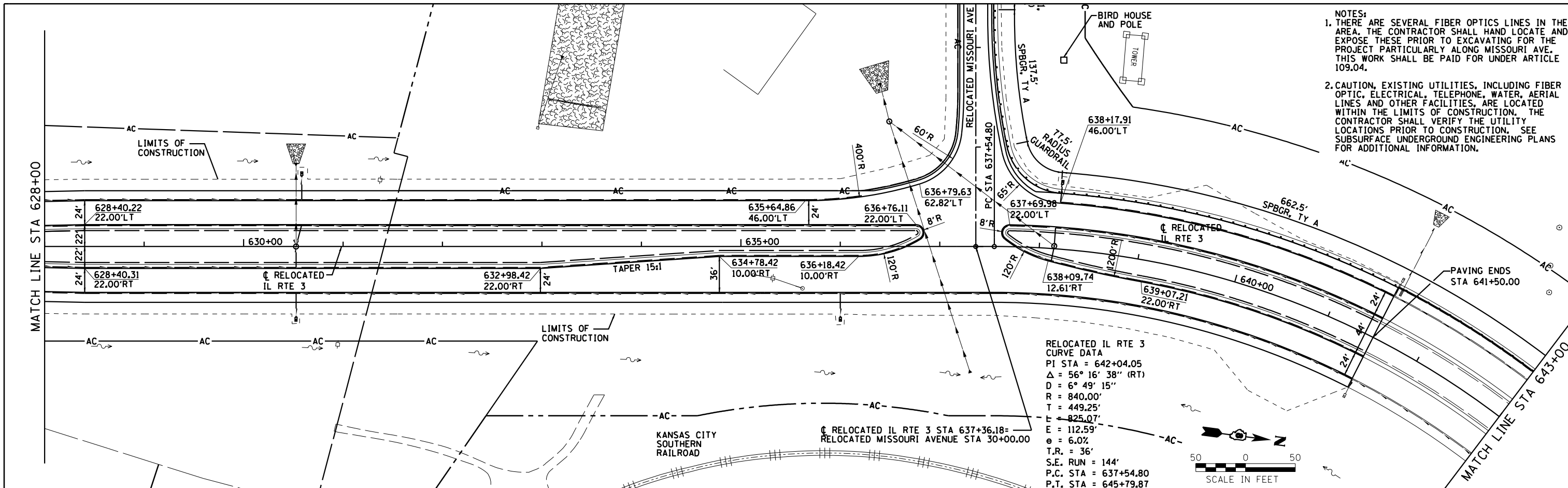


PLAN	SURVEYED	BY	DATE
	PLOTTED		
	ALIGNED		
	CHECKED		
	FILED		
	NO.		

PROFILE	SURVEYED	BY	DATE
	PLOTTED		
	GRADES		
	CHECKED		
	STRUCTURE		
	NOTATIONS		
	CHKD		
	NO.		



417.31	418.08	416.86	417.63	416.51	417.28	416.26	417.03	416.11	416.88	416.06	416.83	416.10	416.87	416.25	417.02	416.50	417.27	416.84	417.61	417.29	418.06	417.83	418.60	418.48	419.25	419.22	419.99	420.07	420.84	421.01	421.78	421.98	422.75	423.20	423.72	424.18	424.70	425.15	425.67	426.12	426.64	427.10	427.62	428.07	428.59	429.04	429.56	430.19	430.54	431.51	432.48	433.46	434.43	435.40	436.38
628+00	629+00	630+00	631+00	632+00	633+00	634+00	635+00	636+00	637+00	638+00	639+00	640+00	641+00	642+00	643+00																																								

Farnsworth GROUP, INC.
 2705 McGraw Drive
 Bloomington, Illinois 61704
 309/663-8435, 309/663-1571 fax

USER NAME =	dmeyer
DESIGNED -	JJO
DRAWN -	JJO
CHECKED -	PJM
DATE -	03/20/13

REVISED -	
REVISED -	
REVISED -	
REVISED -	

STATE OF ILLINOIS
DEPARTMENT OF TRANSPORTATION

RELOCATED IL RTE 3
PLAN & PROFILE

SCALE: SHEET NO. OF SHEETS STA. TO STA.

F.A.P. RTE.	SECTION	COUNTY	TOTAL SHEETS	SHEET NO.
788	520-1-2	ST. CLAIR	142	29
CONTRACT NO. 76850				
ILLINOIS FED. AID PROJECT				

- NOTES:**
1. THERE ARE SEVERAL FIBER OPTICS LINES IN THE AREA. THE CONTRACTOR SHALL HAND LOCATE AND EXPOSE THESE PRIOR TO EXCAVATING FOR THE PROJECT PARTICULARLY ALONG MISSOURI AVE. THIS WORK SHALL BE PAID FOR UNDER ARTICLE 109.04.
 2. CAUTION, EXISTING UTILITIES, INCLUDING FIBER OPTIC, ELECTRICAL, TELEPHONE, WATER, AERIAL LINES AND OTHER FACILITIES, ARE LOCATED WITHIN THE LIMITS OF CONSTRUCTION. THE CONTRACTOR SHALL VERIFY THE UTILITY LOCATIONS PRIOR TO CONSTRUCTION. SEE SUBSURFACE UNDERGROUND ENGINEERING PLANS FOR ADDITIONAL INFORMATION.