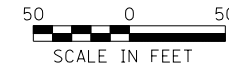


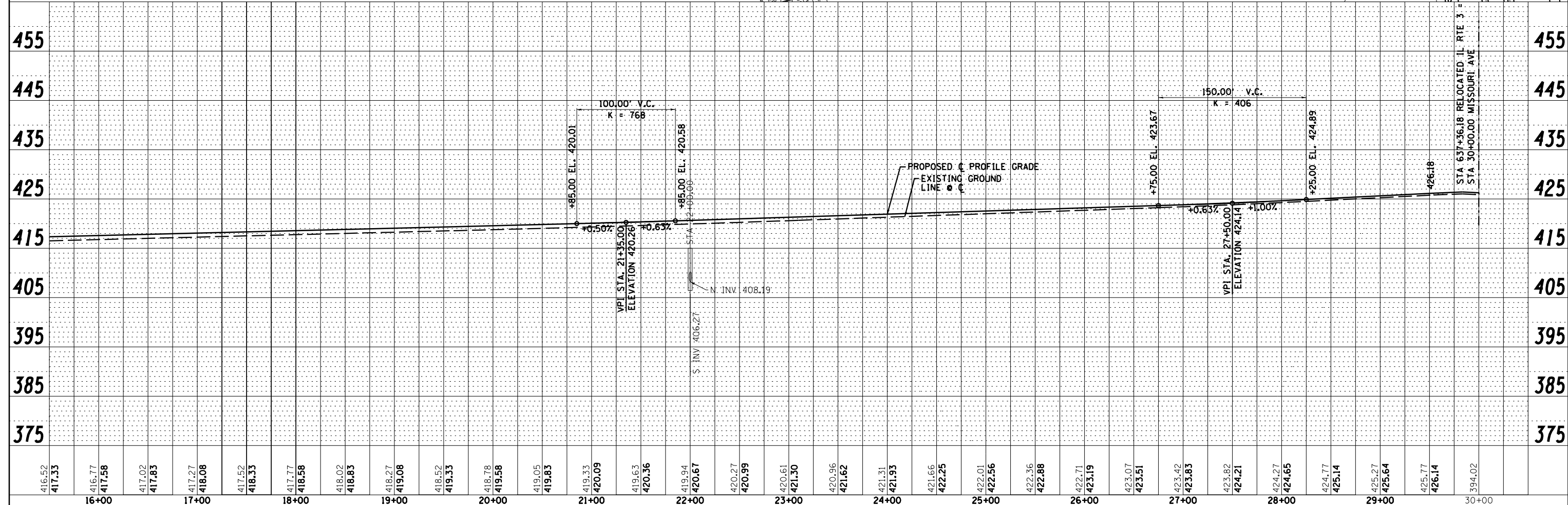
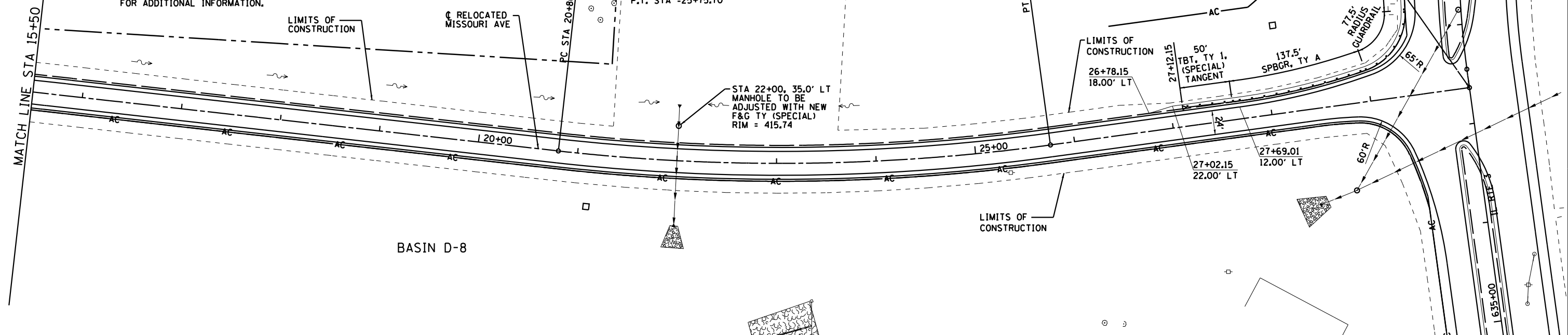
NOTES:
 1. THERE ARE SEVERAL FIBER OPTICS LINES IN THE AREA. THE CONTRACTOR SHALL HAND LOCATE AND EXPOSE THESE PRIOR TO EXCAVATING FOR THE PROJECT PARTICULARLY ALONG MISSOURI AVE. THIS WORK SHALL BE PAID FOR UNDER ARTICLE 109.04.
 2. CAUTION, EXISTING UTILITIES, INCLUDING FIBER OPTIC, ELECTRICAL, TELEPHONE, WATER, AERIAL LINES AND OTHER FACILITIES, ARE LOCATED WITHIN THE LIMITS OF CONSTRUCTION. THE CONTRACTOR SHALL VERIFY THE UTILITY LOCATIONS PRIOR TO CONSTRUCTION. SEE SUBSURFACE UNDERGROUND ENGINEERING PLANS FOR ADDITIONAL INFORMATION.

MISSOURI AVENUE
 CURVE DATA
 PI STA = 23+29.42
 $\Delta = 14^\circ 11' 00''$ (LT)
 $D = 2^\circ 51' 53''$
 $R = 2,000.00'$
 $T = 248.82'$
 $L = 495.09'$
 $E = 15.42'$
 $e = 2.30\%$
 $T.R. = 5.87'$
 $S.E. RUN = 78.26'$
 $P.C. STA = 20+80.60$
 $P.T. STA = 25+75.70$

SEE LANDSCAPING
 PLANS FOR TREE
 PLANTINGS IN
 THIS AREA



RELOCATED IL RTE 3 STA 637+36.18 =
 RELOCATED MISSOURI AVENUE STA 30+00.00



PLAN	SURVEYED	DATE
	PLOTTED	
	ALIGNED	
	CHECKED	
	FILED	
	NO.	

PROFILE	SURVEYED	DATE
	PLOTTED	
	GRADES	
	CHECKED	
	STRUCTURE	
	NOTAT THIS OFFICE	
	NO.	

Farnsworth
 GROUP, INC.
 2709 McGraw Drive
 Bloomington, Illinois 61704
 309/663-8435, 309/663-1571 fax

USER NAME =	dmeyer	DESIGNED -	JJO	REVISED -	
		DRAWN -	JJO	REVISED -	
		CHECKED -	PJM	REVISED -	
		DATE -	03/20/13	REVISED -	

STATE OF ILLINOIS
 DEPARTMENT OF TRANSPORTATION

RELOCATED MISSOURI AVENUE
 PLAN & PROFILE

SCALE: SHEET NO. OF SHEETS STA. TO STA.

F.A.P. RTE.	SECTION	COUNTY	TOTAL SHEETS	SHEET NO.
788	520-1-2	ST. CLAIR	142	32
CONTRACT NO. 76850				
ILLINOIS FED. AID PROJECT				