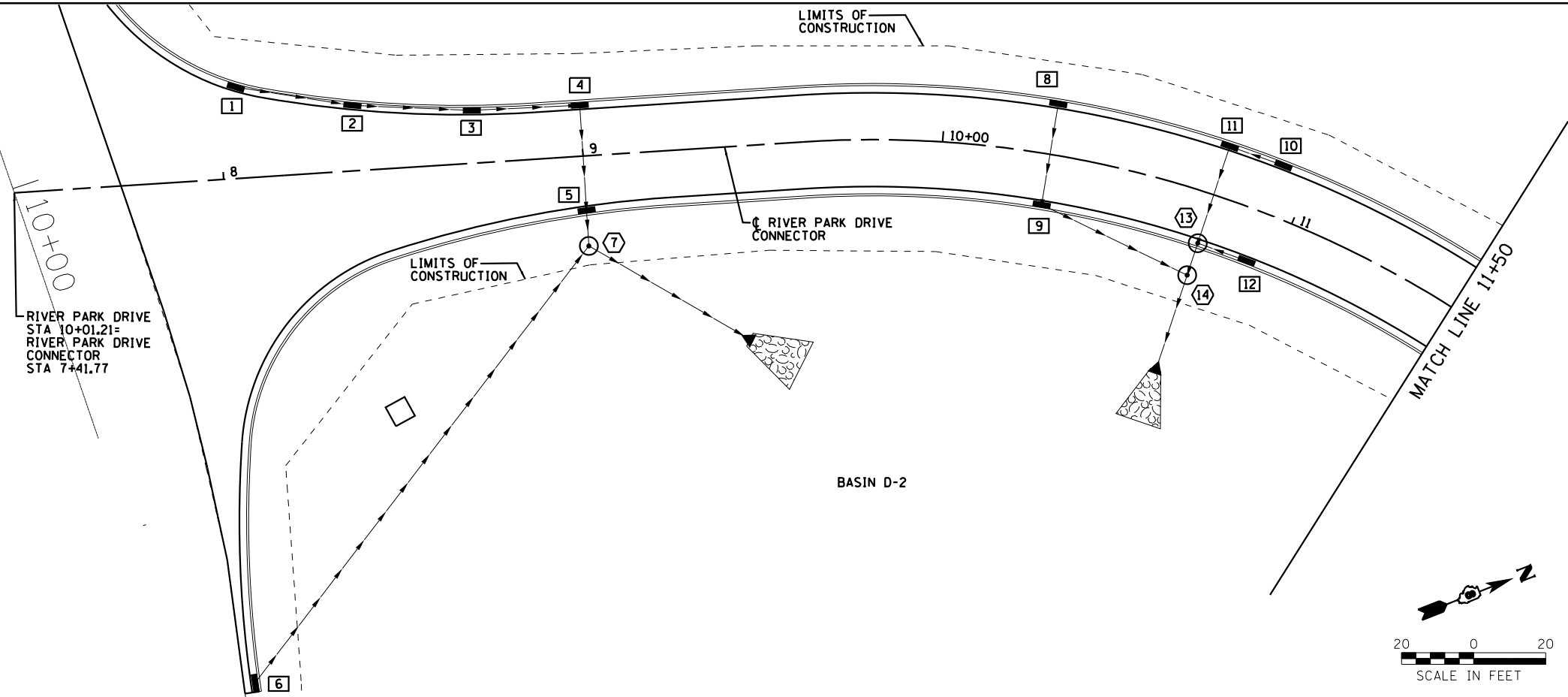
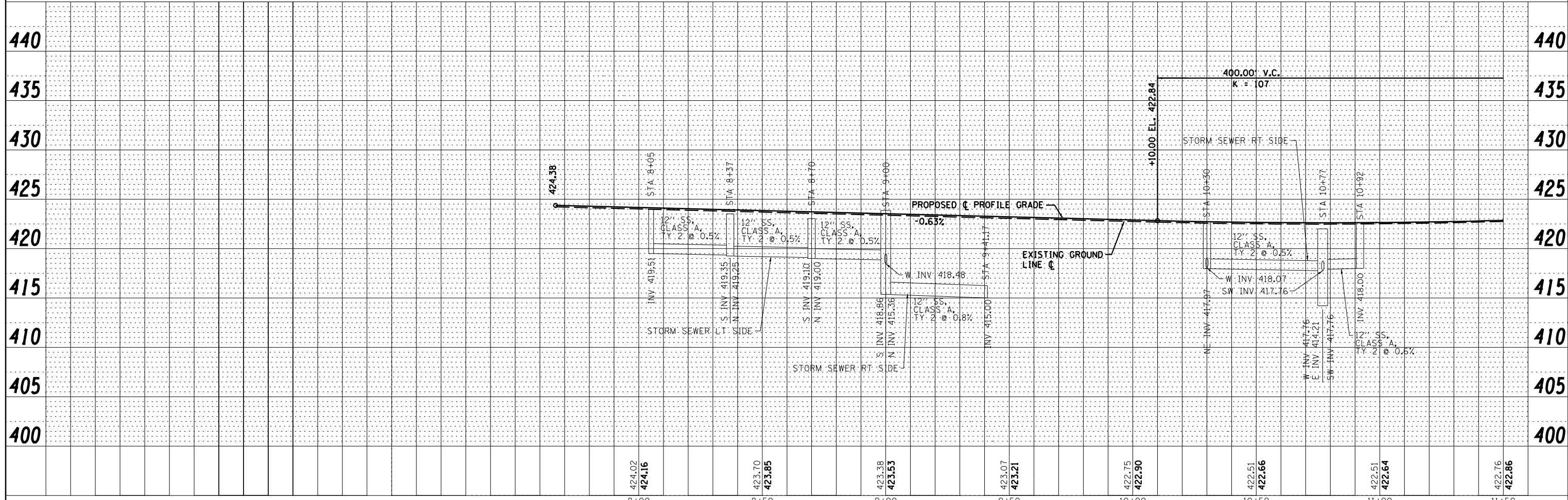


PLAN	SURVEYED	DATE
	PLOTTED	
	ALIGNED	
	CHECKED	
	FILED	
NOTE BOOK NO.	CADD FILE NAME	

- 1 STA 8+05, 26.6' LT INLETS TO BE ADJUSTED WITH NEW TYPE 3 FRAME AND GRATE TC = 424.03
- 2 STA 8+37, 19.6' LT INLETS TO BE ADJUSTED WITH NEW TYPE 3 FRAME AND GRATE TC = 423.97
- 3 STA 8+70, 16.1' LT INLETS TO BE ADJUSTED WITH NEW TYPE 3 FRAME AND GRATE TC = 423.83
- 4 STA 9+00, 15.6' LT INLETS TO BE ADJUSTED WITH NEW TYPE 3 FRAME AND GRATE TC = 423.82
- 5 STA 9+00, 16.5' RT INLETS TO BE ADJUSTED WITH NEW TYPE 3 FRAME AND GRATE TC = 423.63
- 6 STA 8+00, 140.0' RT INLETS TO BE ADJUSTED WITH NEW TYPE 3 FRAME AND GRATE TC = 419.98
- 7 STA 9+00, 25.0' RT MANHOLES TO BE ADJUSTED WITH NEW TYPE 1 FRAME, CLOSED LID RIM = 423.76
- 8 STA 10+30, 15.6' LT INLETS TO BE ADJUSTED WITH NEW TYPE 3 FRAME AND GRATE TC = 423.63
- 9 STA 10+30, 15.6' RT INLETS TO BE ADJUSTED WITH NEW TYPE 3 FRAME AND GRATE TC = 422.59
- 10 STA 10+92, 15.6' LT INLETS TO BE ADJUSTED WITH NEW TYPE 3 FRAME AND GRATE TC = 423.55
- 11 STA 10+77, 15.6' LT INLETS TO BE ADJUSTED WITH NEW TYPE 3 FRAME AND GRATE TC = 423.53
- 12 STA 10+92, 15.6' RT INLETS TO BE ADJUSTED WITH NEW TYPE 3 FRAME AND GRATE TC = 423.26
- 13 STA 10+77, 15.6' RT MANHOLES TO BE ADJUSTED WITH NEW TYPE 3 FRAME, CLOSED LID RIM = 422.49
- 14 STA 10+77, 23.5' RT MANHOLES TO BE ADJUSTED WITH NEW TYPE 1 FRAME, CLOSED LID RIM = 422.62



PROFILE	SURVEYED	DATE
	PLOTTED	
	GRADES CHECKED	
	STRUCTURE NOTATIONS CHECKED	
NOTE BOOK NO.	NOTATIS CHECKED	



Farnsworth GROUP, INC.
 2705 McGraw Drive
 Bloomington, Illinois 61704
 309/663-8435, 309/663-1571 fax

USER NAME = dmeyer	DESIGNED - JJO	REVISED -
	DRAWN - JJO	REVISED -
PLOT SCALE = 48.0000' / in.	CHECKED - PJM	REVISED -
PLOT DATE = 3/21/2013	DATE - 03/20/13	REVISED -

**STATE OF ILLINOIS
 DEPARTMENT OF TRANSPORTATION**

**RIVER PARK DRIVE CONNECTOR
 DRAINAGE PLAN & PROFILE**

SCALE:	SHEET NO.	OF	SHEETS	STA.	TO	STA.
--------	-----------	----	--------	------	----	------

F.A.P. RTE.	SECTION	COUNTY	TOTAL SHEETS	SHEET NO.
788	520-1-2	ST. CLAIR	142	43
CONTRACT NO. 76850				
ILLINOIS FED. AID PROJECT				