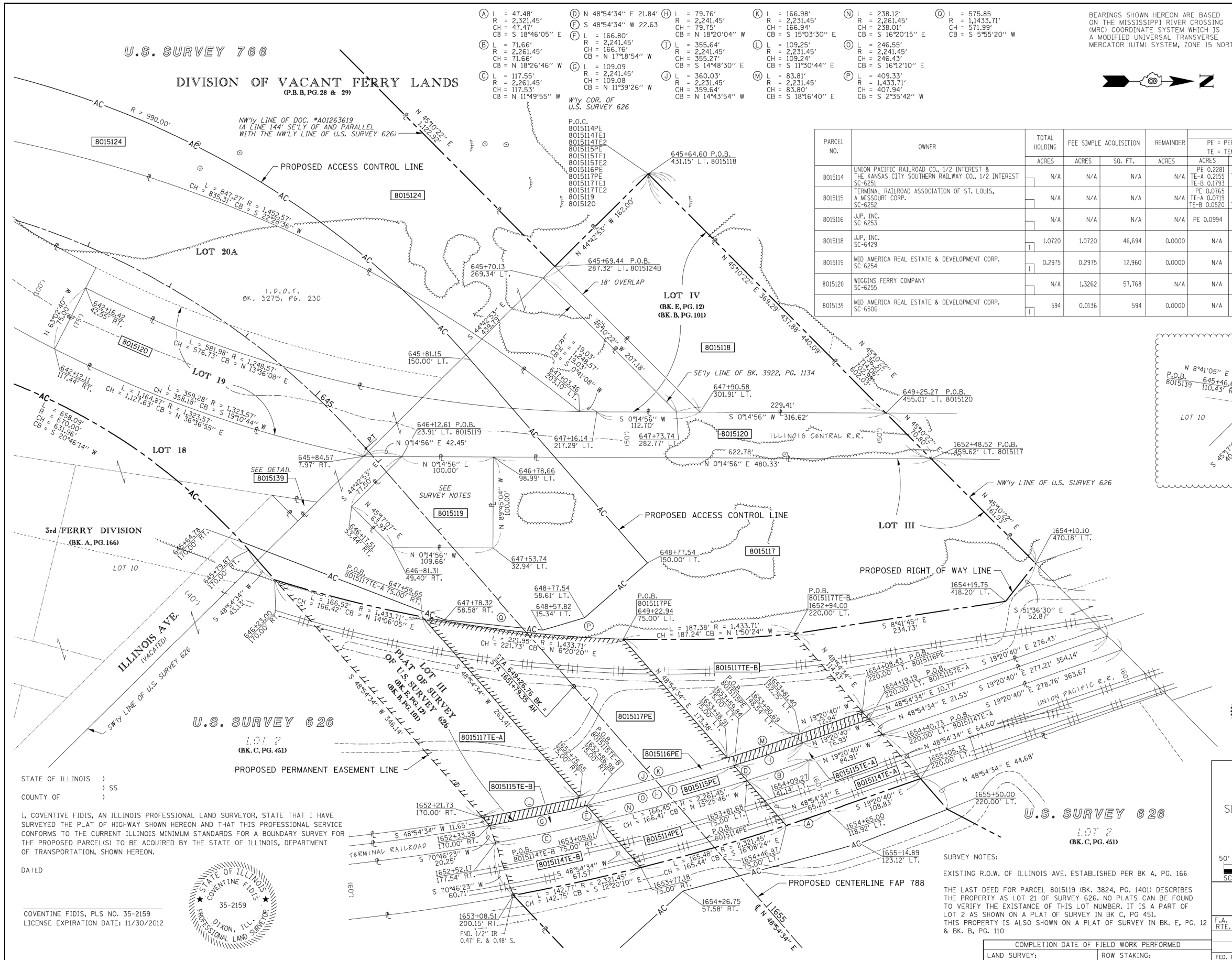


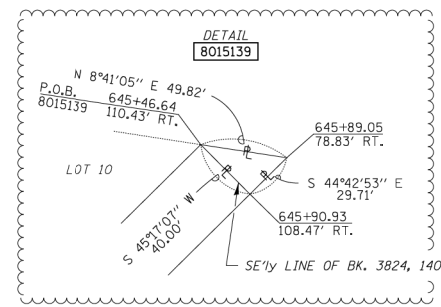
PART OF U.S. SURVEY 626 & 766, T2N, R10W, OF THE 3RD PM, ST. CLAIR COUNTY, ILLINOIS



- A L = 47.48' R = 2,321.45' CH = 47.47' CB = S 18°46'05" E
- B L = 71.66' R = 2,261.45' CH = 71.66' CB = N 18°26'46" W
- C L = 117.55' R = 2,261.45' CH = 117.53' CB = N 11°49'55" W
- D L = 48°54'34" E 21.84' R = 2,241.45' CH = 166.76' CB = N 17°18'54" W
- E L = 166.80' R = 2,241.45' CH = 166.76' CB = N 17°18'54" W
- F L = 166.80' R = 2,241.45' CH = 166.76' CB = N 17°18'54" W
- G L = 109.09' R = 2,241.45' CH = 109.08' CB = N 11°39'26" W
- H L = 79.76' R = 2,241.45' CH = 79.75' CB = S 18°20'04" W
- I L = 355.64' R = 2,241.45' CH = 355.27' CB = S 14°48'30" E
- J L = 360.03' R = 2,231.45' CH = 359.64' CB = N 14°43'54" W
- K L = 166.98' R = 2,231.45' CH = 166.94' CB = S 15°03'30" E
- L L = 109.25' R = 2,231.45' CH = 109.24' CB = S 11°30'44" E
- M L = 83.81' R = 2,231.45' CH = 83.80' CB = S 18°16'40" E
- N L = 238.12' R = 2,261.45' CH = 238.01' CB = S 16°20'15" E
- O L = 575.85' R = 1,143.37' CH = 571.99' CB = S 5°55'20" W
- P L = 246.55' R = 2,241.45' CH = 246.43' CB = S 16°12'10" E
- Q L = 409.33' R = 1,433.71' CH = 407.94' CB = S 2°35'42" W

BEARINGS SHOWN HEREON ARE BASED ON THE MISSISSIPPI RIVER CROSSING (MRC) COORDINATE SYSTEM WHICH IS A MODIFIED UNIVERSAL TRANSVERSE MERCATOR (UTM) SYSTEM, ZONE 15 NORTH.

PARCEL NO.	OWNER	TOTAL HOLDING ACRES	FEE SIMPLE ACQUISITION ACRES	SO. FT.	REMAINDER ACRES	EASEMENTS		PERMANENT TAX NUMBER	PROPERTY ACQUIRED BY
						PE = PERMANENT TE = TEMPORARY	EASEMENT PURPOSE		
8015114	UNION PACIFIC RAILROAD CO., 1/2 INTEREST & THE KANSAS CITY SOUTHERN RAILWAY CO., 1/2 INTEREST SC-6251	N/A	N/A	N/A	N/A	PE 0.2281 TE-A 0.2155 TE-B 0.1793	ROAD CONSTRUCTION ROAD CONSTRUCTION ROAD CONSTRUCTION	01-12.0-506-005	
8015115	TERMINAL RAILROAD ASSOCIATION OF ST. LOUIS, A MISSOURI CORP. SC-6252	N/A	N/A	N/A	N/A	PE 0.0765 TE-A 0.0719 TE-B 0.0520	ROAD CONSTRUCTION ROAD CONSTRUCTION ROAD CONSTRUCTION	01-12.0-512-003	
8015116	J.P. INC. SC-6253	N/A	N/A	N/A	N/A	PE 0.0994	ROAD CONSTRUCTION	01-12.0-300-005	
8015117	J.P. INC. SC-6429	1.0720	1.0720	46,694	0.0000	N/A	N/A	01-12.0-304-001	
8015118	MID AMERICA REAL ESTATE & DEVELOPMENT CORP. SC-6254	0.2975	0.2975	12,960	0.0000	N/A	N/A	01-12.0-300-002	
8015120	WIGGINS FERRY COMPANY SC-6255	N/A	1.3262	57,768	N/A	N/A	N/A	01-12.0-514-007	
8015139	MID AMERICA REAL ESTATE & DEVELOPMENT CORP. SC-6506	594	0.0136	594	0.0000	N/A	N/A	01-12.0-300-006	



PROP. CURVE RTE3-9
 P.I. STA. = 642+04.05
 Δ = 56°16'38" (RT)
 T = 449.25'
 L = 825.07'
 R = 840.00'
 C = 792.30'
 C.B. = N 20°46'15" E
 P.C. STA. = 637+54.80
 P.T. STA. = 645+79.87

STATE OF ILLINOIS)
 COUNTY OF) SS
 I, COVENTINE FIDIS, AN ILLINOIS PROFESSIONAL LAND SURVEYOR, STATE THAT I HAVE SURVEYED THE PLAT OF HIGHWAY SHOWN HEREON AND THAT THIS PROFESSIONAL SERVICE CONFORMS TO THE CURRENT ILLINOIS MINIMUM STANDARDS FOR A BOUNDARY SURVEY FOR THE PROPOSED PARCEL(S) TO BE ACQUIRED BY THE STATE OF ILLINOIS, DEPARTMENT OF TRANSPORTATION, SHOWN HEREON.



ILLINOIS DEPARTMENT OF TRANSPORTATION PLAT OF HIGHWAYS			
FAP ROUTE 788			
SECTION 520-1-2HVB, 520-1-2HVB-1			
ST. CLAIR COUNTY			
JOB NO. R-98-015-00			
STATION 642+00 TO STATION 649+26.76			
STATION 1651+79.35 TO STATION 1655+00			
SCALE: 1" = 50'			
SHEET 6 OF 10			
ILLINOIS DEPARTMENT OF TRANSPORTATION DIVISION OF HIGHWAYS/REGION 5/DISTRICT 8 1102 EASTPORT PLAZA DRIVE COLLINGSVILLE, ILLINOIS 62234-6198			
F.A. RTE.	SECTION	COUNTY	TOTAL SHEETS
			SHEET NO.
COMPLETION DATE OF FIELD WORK PERFORMED		CONTRACT NO.	
LAND SURVEY:	ROW STAKING:	FED. ROAD DIST. NO.	ILLINOIS FED. AID PROJECT

FAP ROUTE 788 CONSTRUCTION SECTION 520-1-2HVB, 520-1-2HVB-1 ST. CLAIR COUNTY JOB # R-98-015-00 PART OF U.S. SURVEY 626 & 766, T. 2 N., R. 10 W. OF THE 3RD P.M. REV: 2/27/13



USER NAME = *USER*	DESIGNED - JJO	REVISED -
PLOT SCALE = *SCALE*	DRAWN - JJO	REVISED -
PLOT DATE = *DATE*	CHECKED - PJM	REVISED -
	DATE - 03/20/13	REVISED -

STATE OF ILLINOIS
 DEPARTMENT OF TRANSPORTATION

RIGHT OF WAY PLANS

SCALE:	SHEET NO.	OF SHEETS	STA.	TO STA.
--------	-----------	-----------	------	---------

F.A.P. RTE.	SECTION	COUNTY	TOTAL SHEETS	SHEET NO.
788	520-1-2	ST. CLAIR	142	55
CONTRACT NO. 76850				
ILLINOIS FED. AID PROJECT				