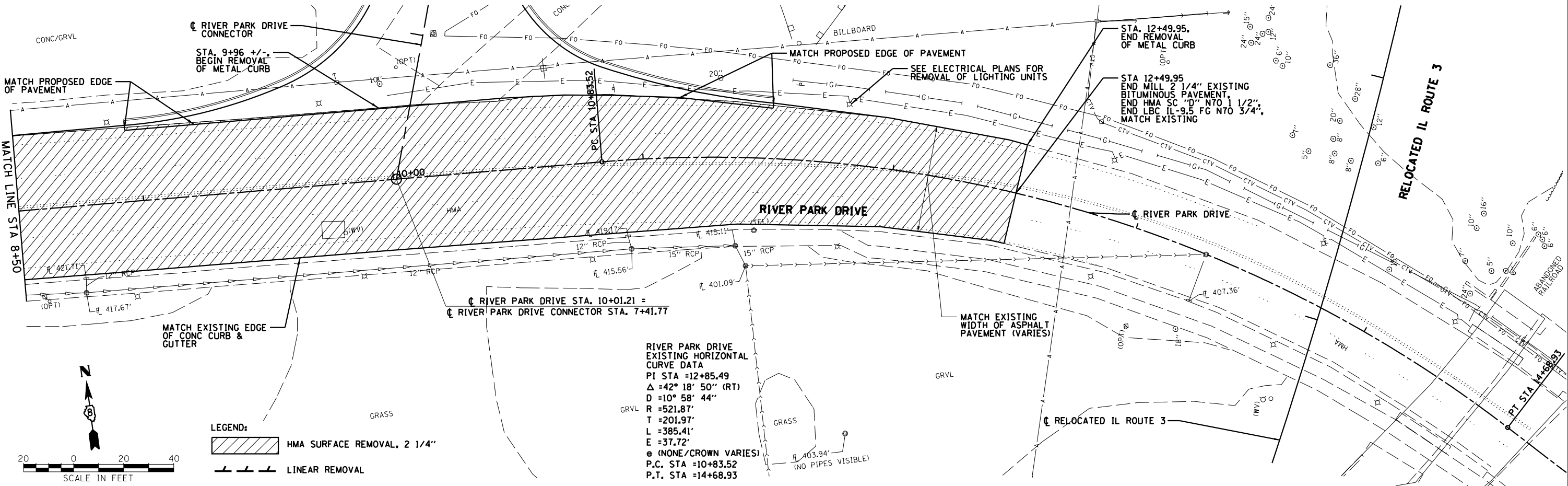


RIVER PARK DRIVE  
 EXISTING HORIZONTAL CURVE DATA  
 (APPROXIMATE FROM SURVEY)  
 PI STA =4+93.70  
 $\Delta = 5^{\circ} 03' 34''$  (LT)  
 $D = 5^{\circ} 43' 46''$   
 $R = 1000.00'$   
 $T = 44.18'$   
 $L = 88.31'$   
 $E = 0.98'$   
 $e$  (NONE/CROWN VARIES)  
 P.C. STA =4+49.52  
 P.T. STA =5+37.83

STA 2+85 +/-  
 BEGIN MILL 2 1/4" EXISTING  
 BITUMINOUS PAVEMENT,  
 BEGIN HMA SC "D" N70 1 1/2",  
 HMA LBC IL-9.5 FG N70 3/4",  
 MATCH EXISTING JOINT



LEGEND:  
 HMA SURFACE REMOVAL, 2 1/4"  
 LINEAR REMOVAL



RIVER PARK DRIVE  
 EXISTING HORIZONTAL  
 CURVE DATA  
 PI STA =12+85.49  
 $\Delta = 42^{\circ} 18' 50''$  (RT)  
 $D = 10^{\circ} 58' 44''$   
 $R = 521.87'$   
 $T = 201.97'$   
 $L = 385.41'$   
 $E = 37.72'$   
 $e$  (NONE/CROWN VARIES)  
 P.C. STA =10+83.52  
 P.T. STA =14+68.93



LEGEND:  
 HMA SURFACE REMOVAL, 2 1/4"  
 LINEAR REMOVAL

**Farnsworth**  
 GROUP, INC.  
 2705 McGraw Drive  
 Bloomington, Illinois 61704  
 309/663-8435, 309/663-1571 fax

USER NAME = dmeyer  
 DESIGNED -  
 DRAWN -  
 PLOT SCALE = 48.0000' / in.  
 CHECKED -  
 PLOT DATE = 3/21/2013

DESIGNED -  
 DRAWN -  
 CHECKED -  
 DATE -

REVISED -  
 REVISED -  
 REVISED -  
 REVISED -

STATE OF ILLINOIS  
 DEPARTMENT OF TRANSPORTATION

REMOVAL PLAN  
 RIVER PARK DRIVE

SCALE: SHEET NO. OF SHEETS STA. TO STA.

F.A.P. RTE.	SECTION	COUNTY	TOTAL SHEETS	SHEET NO.
788	520-1-2	ST. CLAIR	142	74
CONTRACT NO. 76850				

FED. ROAD DISTRICT 8 ILLINOIS FED. AID PROJECT