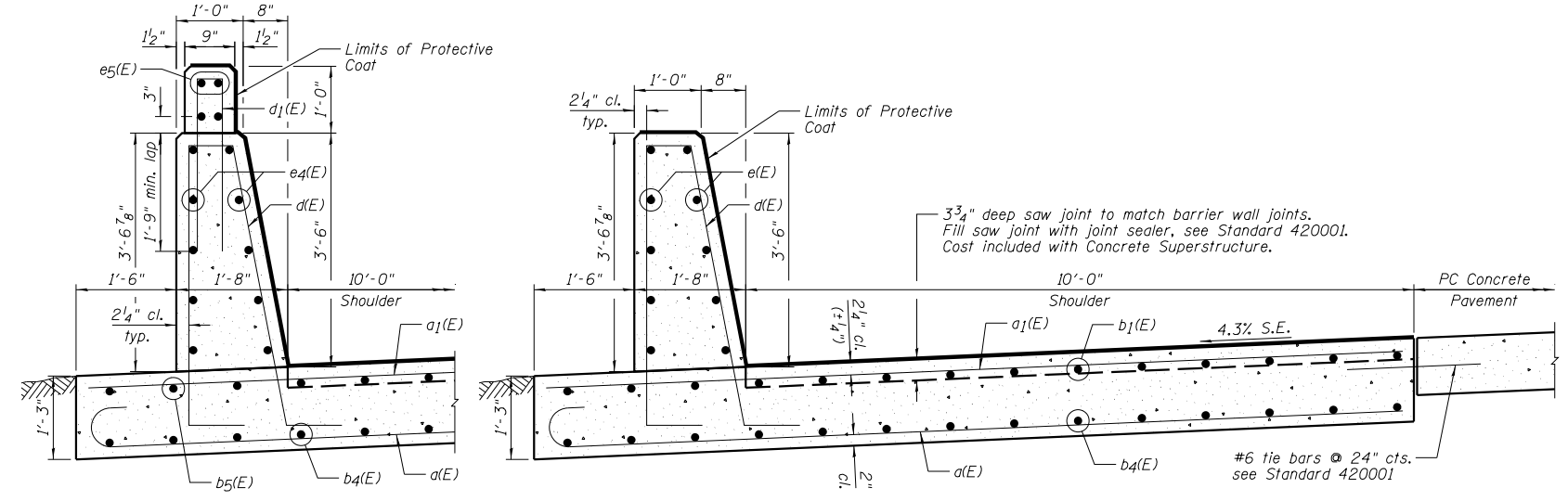
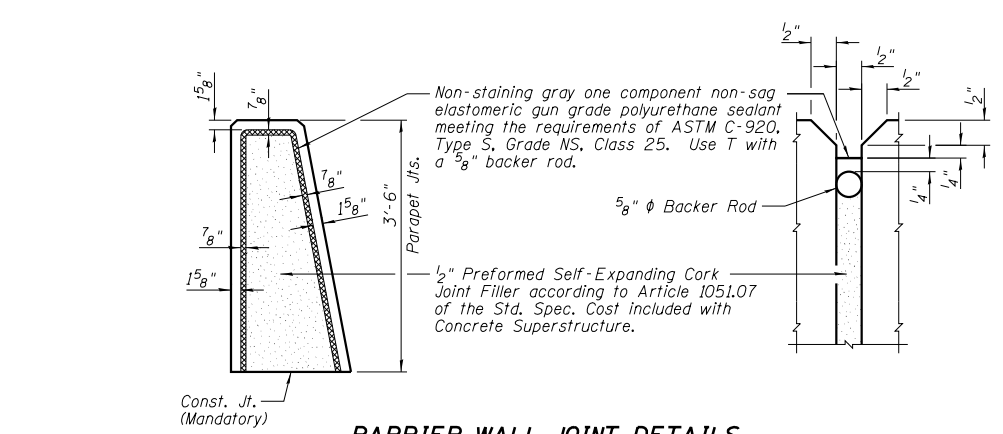


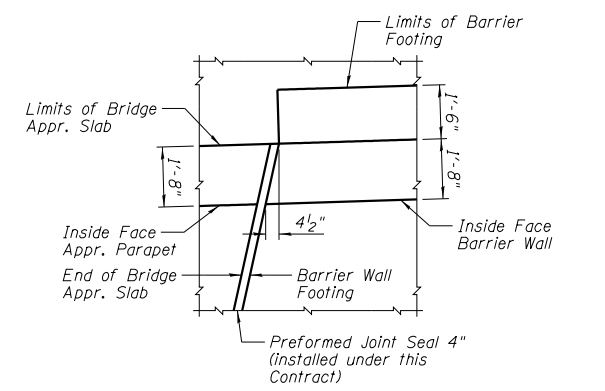
INSIDE ELEVATION OF BARRIER WALL NO. 4



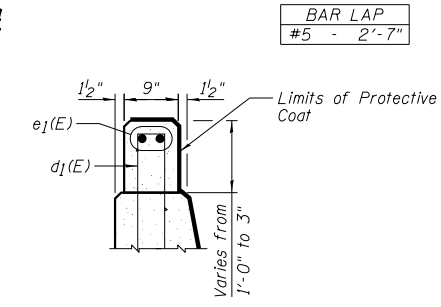
SECTIONS THRU BARRIER WALL



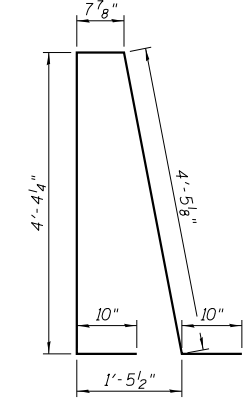
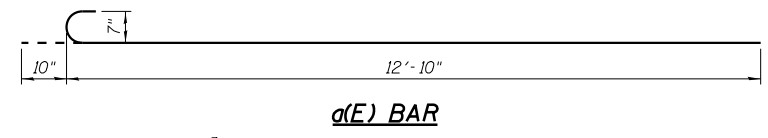
BARRIER WALL JOINT DETAILS



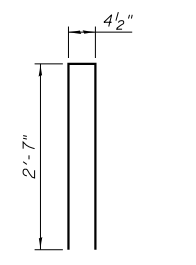
DETAIL D



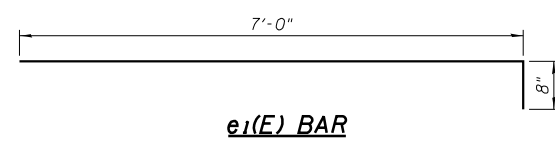
SECTION THRU BARRIER WALL TRANSITION



d(E) BAR



d1(E) BAR



e1(E) BAR

BAR LAP
#5 - 2'-7"

**BARRIER WALL NO. 4
BILL OF MATERIAL**

Bar	No.	Size	Length	Shape
d(E)	312	#7	13'-8"	—
a1(E)	312	#7	12'-10"	—
b1(E)	224	#5	14'-8"	—
b4(E)	140	#5	28'-4"	—
b5(E)	14	#5	19'-8"	—
d(E)	520	#5	11'-2"	⌋
d1(E)	52	#5	5'-7"	⌋
e(E)	160	#6	14'-8"	—
e1(E)	2	#4	7'-8"	—
e4(E)	10	#6	19'-8"	—
e5(E)	4	#4	19'-8"	—
Item	Unit	Quantity		
Concrete Superstructure	Cu. Yd.	204.6		
Protective Coat	Sq. Yd.	423		
Reinforcement Bars, Epoxy Coated	Pound	34,990		

NOTES:

- 1.) See Sheet P1 for location of Barrier Wall.
- 2.) See Sheet P1 for location of Detail D.
- 3.) Bars indicated thus 14x10-#5 etc. indicates 14 lines of bars with 10 lengths per line.
- 4.) E.F. denotes Each Face.
- 5.) Maximum Allowance Soil Bearing Capacity = 4.0 ksf.