

F.A.P. RTE.	SECTION	COUNTY	TOTAL SHEETS	SHEET NO.
793	40BR-1	MADISON	72	1
FED. ROAD DIST. NO.	ILLINOIS	CONTRACT NO. 76A36		

X 72 + 4 = 76

D-98-008-07



LOCATION OF SECTION INDICATED THUS: —

STATE OF ILLINOIS
DEPARTMENT OF TRANSPORTATION
DIVISION OF HIGHWAYS

**PROPOSED
HIGHWAY PLANS**

FAP ROUTE 793 (IL 143)

SECTION 40BR-1

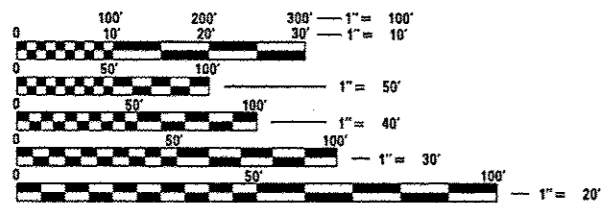
STRUCTURE REPLACEMENT

MADISON COUNTY

C-98-008-07

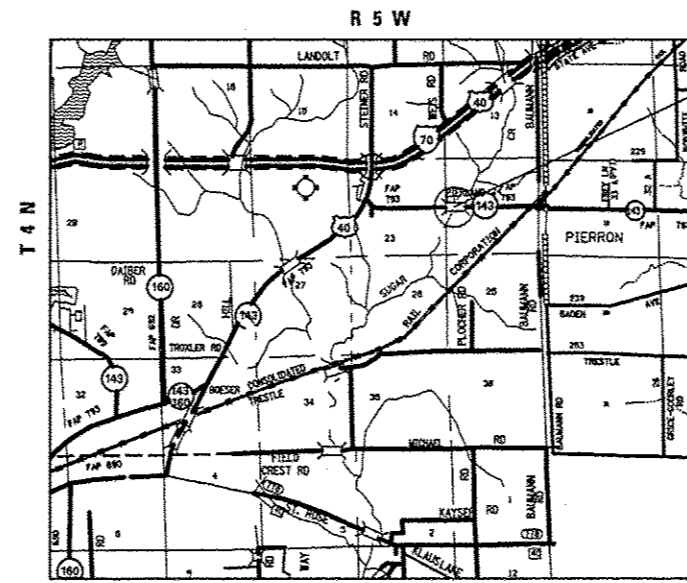
PROJECT ACF-0793(022)

FOR INDEX OF SHEETS, SEE SHEET NO. 2

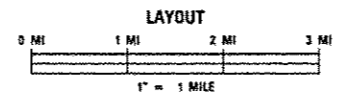


FULL SIZE PLANS HAVE BEEN PREPARED USING STANDARD ENGINEERING SCALES. REDUCED SIZED PLANS WILL NOT CONFORM TO STANDARD SCALES. IN MAKING MEASUREMENTS ON REDUCED PLANS, THE ABOVE SCALES MAY BE USED.

J.U.L.I.E.
JOINT UTILITY LOCATION INFORMATION FOR EXCAVATION
1-800-892-0123
OR 811



TWO SPAN PCC DECK BEAM STRUCTURE TO BE REPLACED WITH SINGLE SPAN STEEL I-BEAM STRUCTURE OVER SUGAR CREEK
SN 060-0128(E) 0341(P)
STA. 56 + 45.00
80'-0" BK TO BK ABUTMENTS



GROSS LENGTH = 0.015 MILES
NET LENGTH = 0.015 MILES

LATITUDE: 38.4646
LONGITUDE: -89.3653

PROJECT ENGINEER: PATTI LOBEAU (618) 346-3179
PROJECT MANAGER: REBECCA THARP (618) 346-3323

TRAFFIC DATA:
ADT = 3700 (2007)
ADT = 4600 (2027)
SU = 3.4%
MU = 4.7%

CONTRACT NO. 76A36

STATE OF ILLINOIS
DEPARTMENT OF TRANSPORTATION
DIVISION OF HIGHWAYS

SUBMITTED December 12, 2012

John D. Baranzelli, PE, LE
DEPUTY DIRECTOR OF HIGHWAYS, REGION 5 ENGINEER
acting ENGINEER OF DESIGN AND ENVIRONMENT

May 10, 2013

Chris Osman, PE, LE
DIRECTOR OF HIGHWAYS, CHIEF ENGINEER

**PRINTED BY THE AUTHORITY
OF THE STATE OF ILLINOIS**