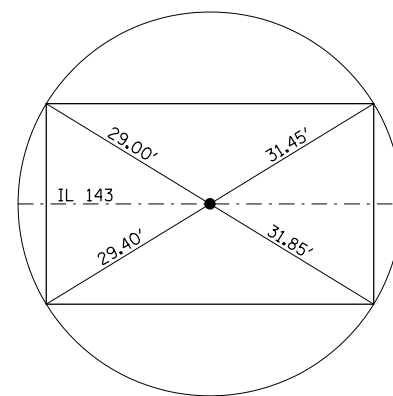
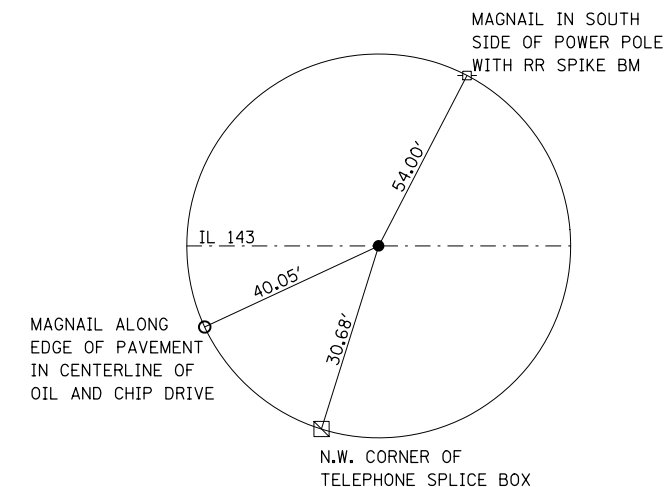


TIE POINT
MAGNAIL
STATION 51+06.56



ALL TIES ARE FROM MAGNAILS
SET NEAR CORNERS OF BRIDGE DECK

TIE POINT
MAGNAIL SET AT CENTERLINE OF PAVEMENT
AND CENTER OF STRUCTURE
STATION 56+45.00



TIE POINT
MAGNAIL
STATION 61+80.83

BENCHMARKS

- BM 100 - RR SPIKE SET IN POWER POLE
P25B3 ON NORTH SIDE OF ROAD,
NE OF MAIL BOX #14056,
IL 143 ± 550 FT EAST OF BRIDGE
STATION: 62+20
ELEVATION: 518.077
- BM 101 - RR SPIKE SET IN POWER POLE
P25B6 ON NORTH SIDE OF ROAD,
± 27 FEET BEHIND GUARDRAIL,
± 100 FEET FROM NE CORNER
OF BRIDGE
STATION: 57+84
OFFSET 45' LEFT
ELEVATION: 501.553
- BM 102 - RR SPIKE SET IN POWER POLE
P25B7 ON NORTH SIDE OF ROAD
± 15.7 FEET BEHIND GUARDRAIL,
± 100 FEET FROM NW CORNER
OF BRIDGE
STATION: 54+94
OFFSET 35' LEFT
ELEVATION: 501.023

ALL TIES ARE DIRECT/SLOPE DISTANCES

FILE NAME =	USER NAME = gelnh	DESIGNED -	REVISED -	STATE OF ILLINOIS DEPARTMENT OF TRANSPORTATION	TIE POINTS AND BENCHMARKS			F.A.P. RTE.	SECTION	COUNTY	TOTAL SHEETS	SHEET NO.
et:\pw_work\pwin\dot\gelinh\dms69644\pin0007a.dgn	DRAWN -	REVISED -	793					40BR-1	MADISON	72	10	
PLOT SCALE = 100.0000' / in.	CHECKED -	REVISED -	CONTRACT NO. 76A36									
PLOT DATE = 9/10/2012	DATE -	REVISED -	SCALE:		SHEET NO.	OF SHEETS	STA.	TO STA.	FED. ROAD DIST. NO.	ILLINOIS FED. AID PROJECT		