

PART OF THE E 1/2 OF SECTION 23, T4N, R5W, OF THE 3RD PM, MADISON COUNTY, ILLINOIS

COORDINATES AND BEARINGS SHOWN HEREON ARE BASED ON SURVEY CONTROL DATA AS PROVIDED BY THE ILLINOIS DEPARTMENT OF TRANSPORTATION.

I.D.O.T. PROVIDED CONTROL & ALIGNMENT				
POINT*/DESC.	STATION	OFFSET	NORTH	EAST
1	52+66.41	18.10' LT	769,856.9590	453,455.4730
2	55+98.92	19.20' RT	769,824.9100	453,788.5320
3	61+25.95	20.58' RT	769,831.8340	454,315.5160
POT	51+06.56		769,836.3400	453,295.9300
POT	56+45.00		769,844.8306	453,834.3035
POT	61+80.83		769,853.2800	454,370.0700

COORDINATE TABLE				
DESCRIPTION	STATION	OFFSET	NORTH	EAST
IRON ROD W/CAP FOUND	52+39.32	35.60'LT	769,874.0300	453,428.1170
IPF	52+16.33	1330.70'LT	771,168.6046	453,384.7047
IPF	52+39.57	34.91'LT	769,873.3410	453,428.3730
PROP. R.O.W. IR SET	51+50	34.69'LT	769,871.7063	453,338.8176
PROP. R.O.W. IR SET	52+39	66.77'LT	769,905.1909	453,427.2992
PROP. R.O.W. IR SET	52+75	79.75'LT	769,918.7360	453,463.0915
PROP. R.O.W. IR SET	51+50	35.31'RT	769,801.7150	453,339.9215
PROP. R.O.W. IR SET	52+41.29	60.83'RT	769,777.6428	453,431.6045
PROP. R.O.W. IR SET	52+75	70.25'RT	769,768.7546	453,465.4568
IRON ROD SET	52+40.22	1.34'RT	769,837.1085	453,429.5945
IRF CENTER SECTION 23			769,794.1950	450,777.5430
STONE FOUND SW CORNER SECTION 24			767,188.1160	453,519.1320

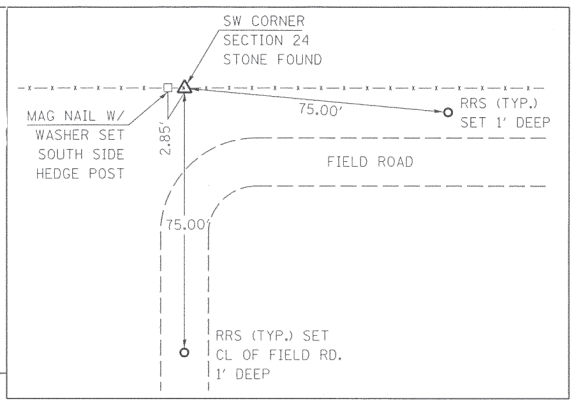
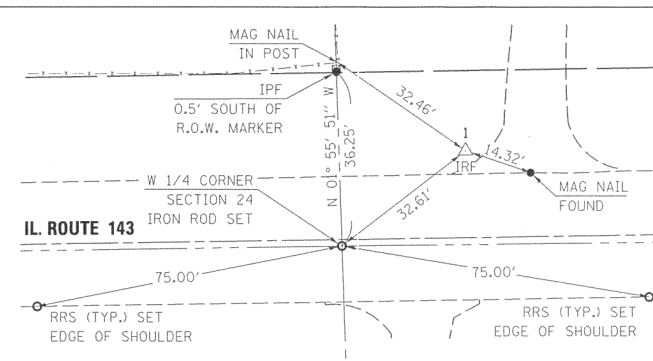
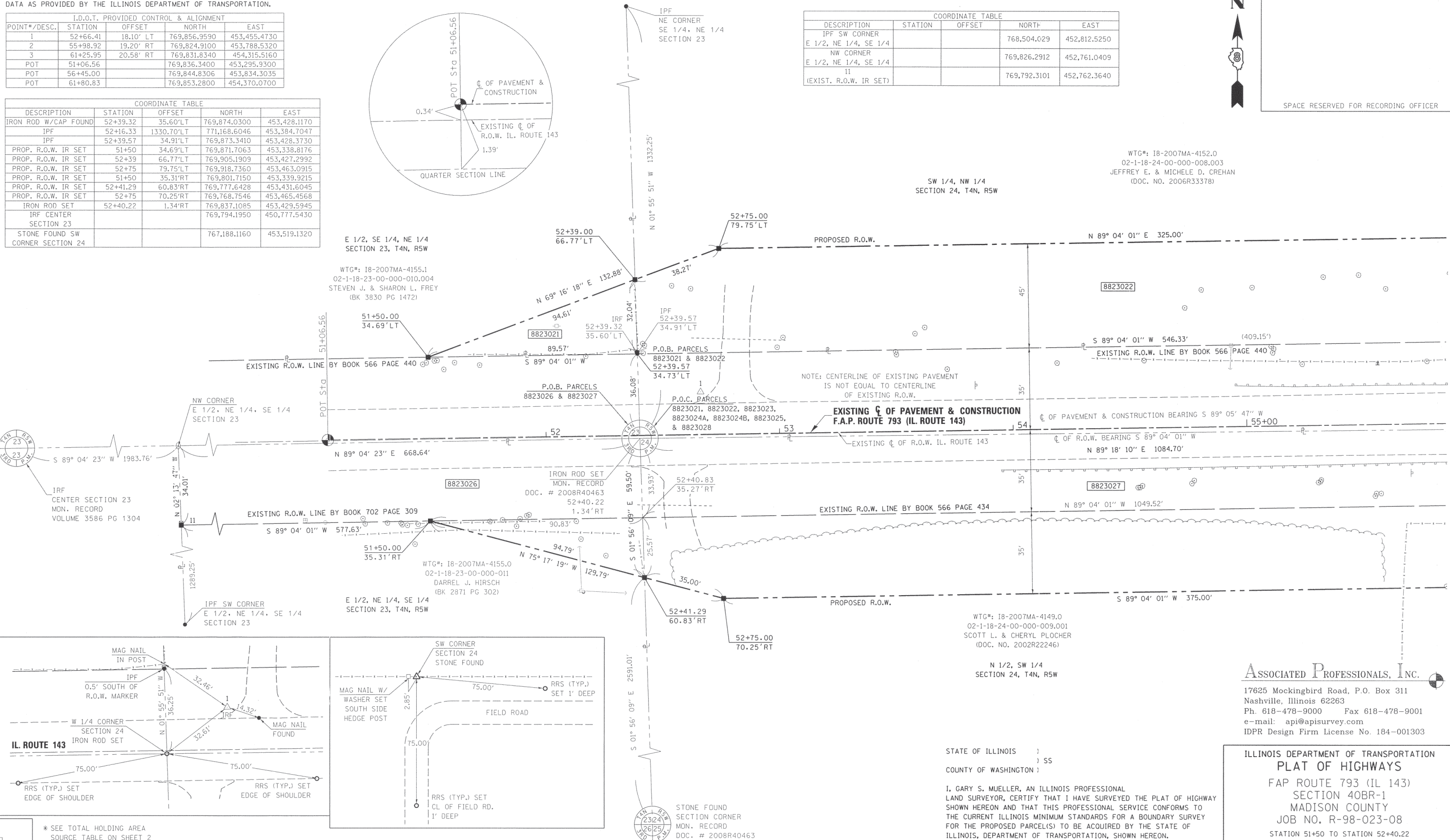
COORDINATE TABLE				
DESCRIPTION	STATION	OFFSET	NORTH	EAST
IPF SW CORNER			768,504.029	452,812.5250
E 1/2, NE 1/4, SE 1/4				
NW CORNER			769,826.2912	452,761.0409
E 1/2, NE 1/4, SE 1/4				
11			769,792.3101	452,762.3640
(EXIST. R.O.W. IR SET)				



SPACE RESERVED FOR RECORDING OFFICER

WTG#: 18-2007MA-4152.0
02-1-18-24-00-000-008.003
JEFFREY E. & MICHELE D. CREHAN
(DOC. NO. 2006R33378)

SW 1/4, NW 1/4
SECTION 24, T4N, R5W



WTG#: 18-2007MA-4149.0
02-1-18-24-00-000-009.001
SCOTT L. & CHERYL PLOCHER
(DOC. NO. 2002R22246)

STATE OF ILLINOIS)
) SS
COUNTY OF WASHINGTON)

I, GARY S. MUELLER, AN ILLINOIS PROFESSIONAL LAND SURVEYOR, CERTIFY THAT I HAVE SURVEYED THE PLAT OF HIGHWAY SHOWN HEREON AND THAT THIS PROFESSIONAL SERVICE CONFORMS TO THE CURRENT ILLINOIS MINIMUM STANDARDS FOR A BOUNDARY SURVEY FOR THE PROPOSED PARCEL(S) TO BE ACQUIRED BY THE STATE OF ILLINOIS, DEPARTMENT OF TRANSPORTATION, SHOWN HEREON.

DATED 12/10/2008
Gary S. Mueller
GARY S. MUELLER, PLS NO. 3332
LICENSE EXPIRATION DATE: 11/30/2010



ASSOCIATED PROFESSIONALS, INC.
17625 Mockingbird Road, P.O. Box 311
Nashville, Illinois 62263
Ph. 618-478-9000 Fax 618-478-9001
e-mail: api@apisurvey.com
IDPR Design Firm License No. 184-001303

ILLINOIS DEPARTMENT OF TRANSPORTATION
PLAT OF HIGHWAYS
FAP ROUTE 793 (IL 143)
SECTION 40BR-1
MADISON COUNTY
JOB NO. R-98-023-08
STATION 51+50 TO STATION 52+40.22

SCALE: 1" = 20'

SHEET 3 OF 6

ILLINOIS DEPARTMENT OF TRANSPORTATION
DIVISION OF HIGHWAYS/REGION 5/DISTRICT 8
1102 EASTPORT PLAZA DRIVE
COLLINGSVILLE, ILLINOIS 62234-6198

F.A.P. RTE.	SECTION	COUNTY	TOTAL SHEETS	SHEET NO.
793	40BR-1	MADISON	72	22

COMPLETION DATE OF FIELD WORK PERFORMED
LAND SURVEY: 6/25/2008 ROW STAKING: 9/25/2008

FED. ROAD DIST. NO. 8 [ILLINOIS] FED. AID PROJECT

CONTRACT NO. 76A36

* SEE TOTAL HOLDING AREA SOURCE TABLE ON SHEET 2

PARCEL NO.	OWNER	TOTAL HOLDING ACRES	FEE SIMPLE ACQUISITION				REMAINDER ACRES	PERMANENT TAX NUMBER	PROPERTY ACQUIRED BY DOC. NO.	
			GROSS ACRES	SQ. FT.	PREVIOUSLY DEDICATED ACRES	NET SQ. FT.				
8823021	STEVEN J. FREY & SHARON L. FREY HUSBAND & WIFE, AS JOINT TENANTS TITLE REPORT NO. 18-2007MA-4155.1	10.5461	0.0329	1,434	N/A	N/A	0.0329	1,434	10.5132	02-1-18-23-00-000-010.004
8823026	DARREL J. HIRSCH TITLE REPORT NO. 18-2007MA-4155.0	15.5762	0.5479	23,869	0.5213	22,709	0.0266	1,160	15.0283	02-1-18-23-00-000-011