

PART OF THE W 1/2 OF SECTION 24, T4N, R5W, OF THE 3RD PM, MADISON COUNTY, ILLINOIS

COORDINATES AND BEARINGS SHOWN HEREON ARE BASED ON SURVEY CONTROL DATA AS PROVIDED BY THE ILLINOIS DEPARTMENT OF TRANSPORTATION.

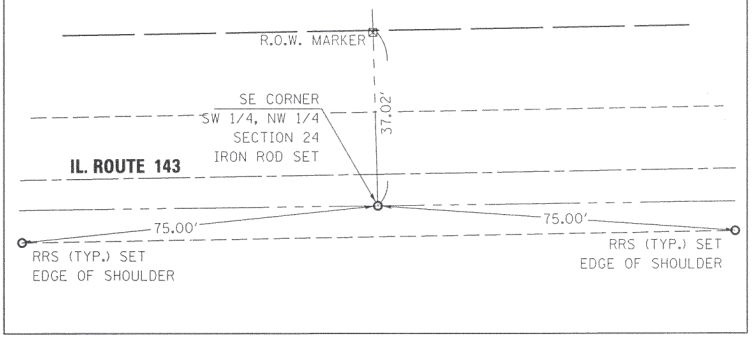
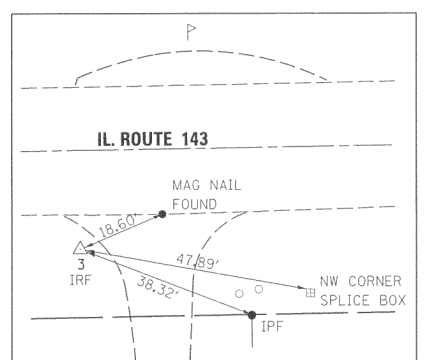
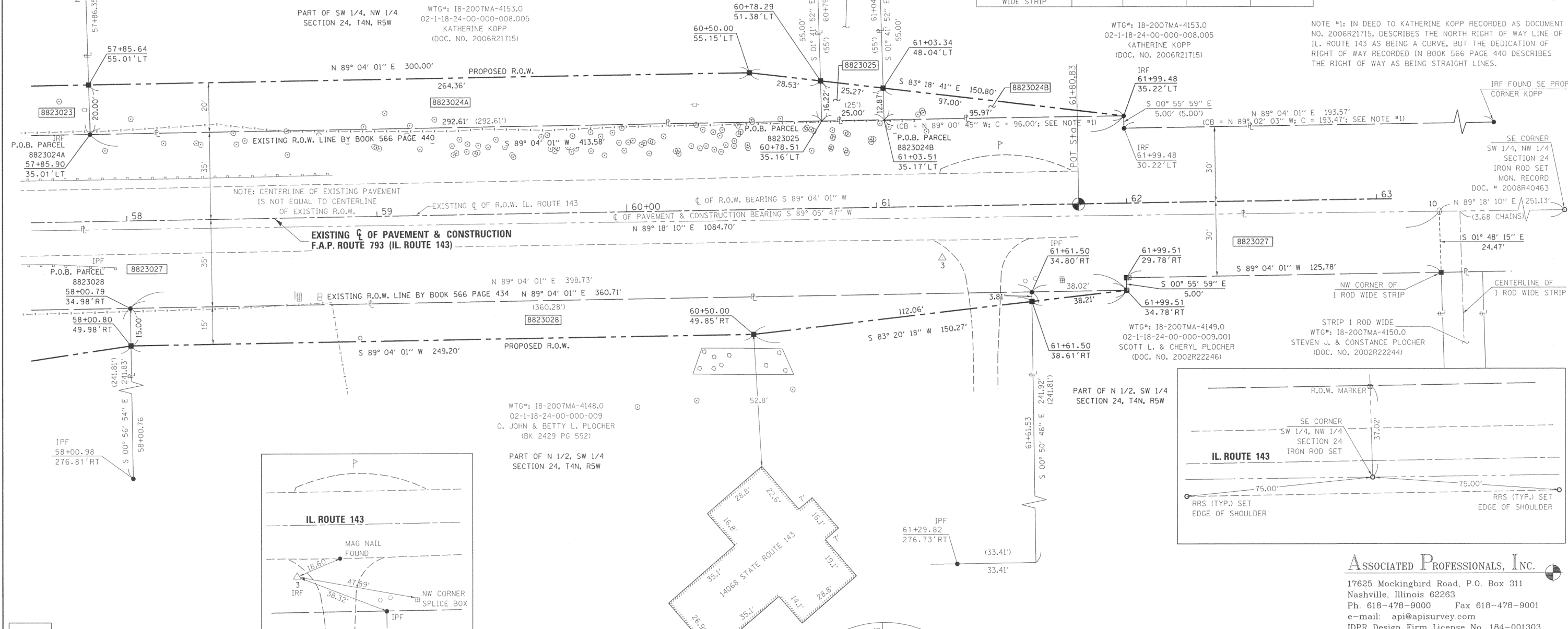
I.D.O.T. PROVIDED CONTROL & ALIGNMENT				
POINT#/DESC.	STATION	OFFSET	NORTH	EAST
1	52+66.41	18.10' LT	769,856.9590	453,455.4730
2	55+98.92	19.20' RT	769,824.9100	453,788.5320
3	61+25.95	20.58' RT	769,831.8340	454,315.5160
POT	51+06.56		769,836.3400	453,295.9300
POT	56+45.00		769,844.8306	453,834.3035
POT	61+80.83		769,853.2800	454,370.0700

COORDINATE TABLE				
DESCRIPTION	STATION	OFFSET	NORTH	EAST
IPF	61+61.50	34.80' RT	769,818.1841	454,351.2866
IPF	61+29.82	276.73' RT	769,575.7830	454,323.4260
IPF	58+00.98	276.81' RT	769,570.5110	453,994.6250
IPF	58+00.79	34.98' RT	769,812.3110	453,990.6229
IRF	57+85.90	35.01' LT	769,882.0599	453,974.6339
IRF	57+84.04	178.72' LT	770,025.7180	453,970.5110
IRF	61+99.48	35.22' LT	769,888.7938	454,388.1600
IRF	61+99.48	30.22' LT	769,883.7945	454,388.2414
PROP. R.O.W. IR SET	57+85.64	55.01' LT	769,902.0533	453,974.0601
PROP. R.O.W. IR SET	60+50	55.15' LT	769,906.3576	454,238.3867

COORDINATE TABLE				
POINT #/DESCRIPTION	STATION	OFFSET	NORTH	EAST
PROP. R.O.W. IR SET	60+78.29	51.38' LT	769,903.0340	454,266.7280
PROP. R.O.W. IR SET	61+03.34	48.04' LT	769,900.0910	454,291.8246
PROP. R.O.W. IR SET	58+00.79	49.98' RT	769,797.3131	453,990.8711
PROP. R.O.W. IR SET	60+50	49.85' RT	769,801.3706	454,240.0424
PROP. R.O.W. IR SET	61+61.50	38.61' RT	769,814.3699	454,351.3430
PROP. R.O.W. IR SET	61+99.51	34.78' RT	769,818.8031	454,389.2998
EXIST. R.O.W. IR SET	61+99.51	29.78' RT	769,823.8024	454,389.2183
IRON ROD SET, SE CORNER SW 1/4, NW 1/4 SECTION 24			769,853.3658	454,765.3279
IRF SE PROP CORNER KOPP			769,886.9461	454,581.7858
IRF			769,850.3095	454,514.2150
IRON ROD SET, NW CORNER OF 1 ROD WIDE STRIP			769,825.8504	454,514.9855

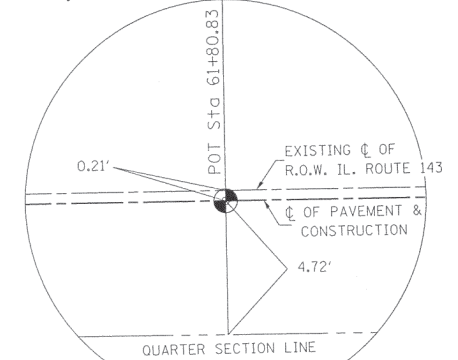


SPACE RESERVED FOR RECORDING OFFICER



* SEE TOTAL HOLDING AREA SOURCE TABLE ON SHEET 2

PARCEL NO.	OWNER	TOTAL HOLDING ACRES	FEE SIMPLE ACQUISITION				REMAINDER ACRES	PERMANENT TAX NUMBER	PROPERTY ACQUIRED BY DOC. NO.		
			GROSS		PREVIOUSLY DEDICATED					NET	
			ACRES	SQ. FT.	ACRES	SQ. FT.	ACRES	SQ. FT.	ACRES		
8823024	KATHERINE KOPP TITLE REPORT NO. 18-2007MA-4153.0	2.0004	A 0.1331 B 0.0142	A 5,798 B 617	N/A	N/A	A 0.1331 B 0.0142	A 5,798 B 617	1.8531	02-1-18-23-00-000-010.004	2010R07594
8823025	VILLAGE OF PIERRON TITLE REPORT NO. 18-2007MA-4151.0	0.0316	0.0083	363	N/A	N/A	0.0083	363	0.0233	02-1-18-24-00-000-008.001	2009R21849
8823027	SCOTT L. & CHERYL PLOCHER HUSBAND & WIFE, AS JOINT TENANTS TITLE REPORT NO. 18-2007MA-4149.0	78.4866	1.1879	51,744	0.7748	33,751	0.4131	17,993	77.2987	02-1-18-24-00-000-009.001	2009R17150
8823028	O. JOHN PLOCHER & BETTY L. PLOCHER, HIS WIFE, AS TENANTS IN COMMON TITLE REPORT NO. 18-2007MA-4148.0	2.0017	0.1099	4,786	N/A	N/A	0.1099	4,786	1.8918	02-1-18-24-00-000-009	2009R17151



STATE OF ILLINOIS)
) SS
COUNTY OF WASHINGTON)

I, GARY S. MUELLER, AN ILLINOIS PROFESSIONAL LAND SURVEYOR, CERTIFY THAT I HAVE SURVEYED THE PLAT OF HIGHWAY SHOWN HEREON AND THAT THIS PROFESSIONAL SERVICE CONFORMS TO THE CURRENT ILLINOIS MINIMUM STANDARDS FOR A BOUNDARY SURVEY FOR THE PROPOSED PARCEL(S) TO BE ACQUIRED BY THE STATE OF ILLINOIS, DEPARTMENT OF TRANSPORTATION, SHOWN HEREON.

DATED 12/10/2008
Gary S. Mueller
GARY S. MUELLER, PLS. NO. 3332
LICENSE EXPIRATION DATE: 11/30/2010



ASSOCIATED PROFESSIONALS, INC.
17625 Mockingbird Road, P.O. Box 311
Nashville, Illinois 62263
Ph. 618-478-9000 Fax 618-478-9001
e-mail: api@apisurvey.com
IDPR Design Firm License No. 184-001303

**ILLINOIS DEPARTMENT OF TRANSPORTATION
PLAT OF HIGHWAYS**

FAP ROUTE 793 (IL 143)
SECTION 40BR-1
MADISON COUNTY
JOB NO. R-98-023-08
STATION 58+00.80 TO STATION 62+00

SHEET 5 OF 6

F.A.P. RTE.	SECTION	COUNTY	TOTAL SHEETS	SHEET NO.
793	40BR-1	MADISON	72	24

CONTRACT NO. 76A36

FED. ROAD DIST. NO. 8 ILLINOIS FED. AID PROJECT