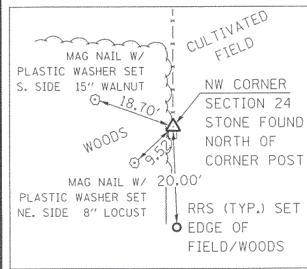


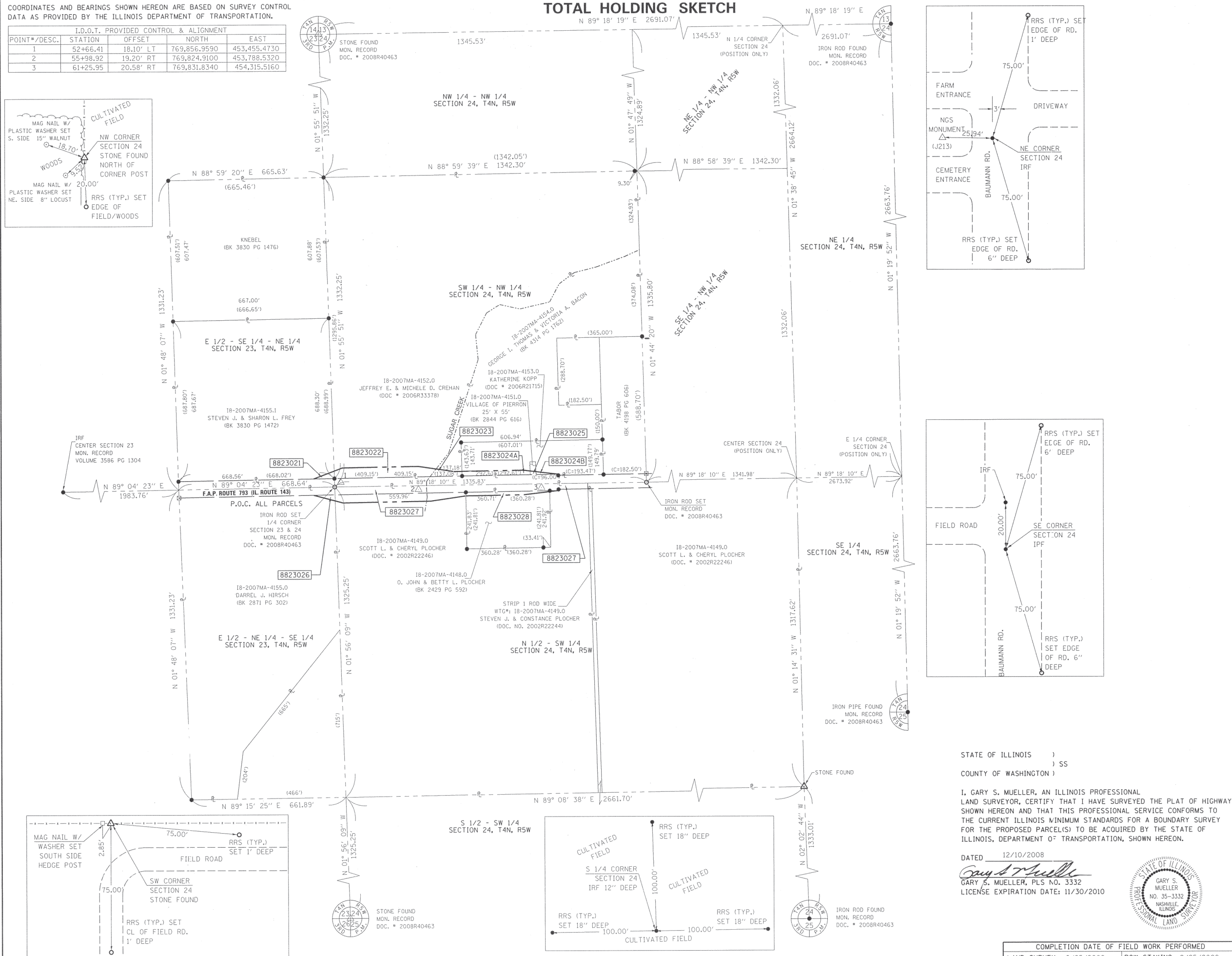
PART OF SECTION 23 & 24, T4N, R5W, OF THE 3RD PM, MADISON COUNTY, ILLINOIS

COORDINATES AND BEARINGS SHOWN HEREON ARE BASED ON SURVEY CONTROL DATA AS PROVIDED BY THE ILLINOIS DEPARTMENT OF TRANSPORTATION.

POINT*/DESC.	I.D.O.T. PROVIDED CONTROL & ALIGNMENT			
	STATION	OFFSET	NORTH	EAST
1	52+66.41	18.10' LT	769,856.9590	453,455.4730
2	55+98.92	19.20' RT	769,824.9100	453,788.5320
3	61+25.95	20.58' RT	769,831.8340	454,315.5160



TOTAL HOLDING SKETCH



SPACE RESERVED FOR RECORDING OFFICER

COORDINATE TABLE		
DESCRIPTION	NORTH	EAST
IRF CENTER SECTION 23	769,794.1950	450,777.5430
IRF N 1/4 CORNER SECTION 23	772,472.6450	452,014.1180
IPF	770,561.0690	453,405.0410
IPF NW CORNER E 1/2, SE 1/4, NE 1/4 SECTION 23	771,156.8580	452,719.1800
IPF NW PROP CORNER FREY	770,549.6960	452,738.5530
IPF SW PROP CORNER FREY	769,862.3650	452,759.9060
IPF SW CORN SECTION 24	767,239.1990	458,842.8180
IRF SW CORNER SE 1/4, SE 1/4 SECTION 24	767,226.6570	457,508.6170
IRF S 1/4 CORNER SECTION 24	767,220.2200	456,183.3400
IRF NE CORNER SECTION 24	772,565.3490	458,721.5520
STONE FOUND SW CORNER SECTION 24	767,188.1160	453,519.1320
STONE FOUND SE CORNER N 1/2, SE 1/4 SECTION 24	768,552.3840	456,135.7620
STONE FOUND NW CORNER SECTION 24	772,500.0950	453,339.8150
IPF SW CORNER E 1/2, NE 1/4, SE 1/4 SECTION 23	768,504.0290	452,812.5250
IRF FOUND SE PROP CORNER KOPP	769,886.9461	454,581.7858
IRF FOUND NE PROP CORNER KOPP	770,036.6660	454,577.3480
IRF FOUND NE PROP CORNER TABOR	770,478.6220	454,747.3320
IRON ROD SET SE CORNER SW 1/4, NW 1/4 SECTION 24	769,853.3658	454,765.3279

ASSOCIATED PROFESSIONALS, INC.
 17625 Mockingbird Road, P.O. Box 311
 Nashville, Illinois 62263
 Ph. 618-478-9000 Fax 618-478-9001
 e-mail: api@apisurvey.com
 IDPR Design Firm License No. 184-001303

STATE OF ILLINOIS)
) SS
 COUNTY OF WASHINGTON)
 I, GARY S. MUELLER, AN ILLINOIS PROFESSIONAL LAND SURVEYOR, CERTIFY THAT I HAVE SURVEYED THE PLAT OF HIGHWAY SHOWN HEREON AND THAT THIS PROFESSIONAL SERVICE CONFORMS TO THE CURRENT ILLINOIS MINIMUM STANDARDS FOR A BOUNDARY SURVEY FOR THE PROPOSED PARCEL(S) TO BE ACQUIRED BY THE STATE OF ILLINOIS, DEPARTMENT OF TRANSPORTATION, SHOWN HEREON.
 DATED 12/10/2008
Gary S. Mueller
 GARY S. MUELLER, PLS NO. 3332
 LICENSE EXPIRATION DATE: 11/30/2010



ILLINOIS DEPARTMENT OF TRANSPORTATION
PLAT OF HIGHWAYS
 FAP ROUTE 793 (IL 143)
 SECTION 40BR-1
 MADISON COUNTY
 JOB NO. R-98-023-08
 TOTAL HOLDING

SCALE: 1" = 200'

SHEET 6 OF 6

F.A.P. RTE.	SECTION	COUNTY	TOTAL SHEETS	SHEET NO.
793	40BR-1	MADISON	72	25

ILLINOIS DEPARTMENT OF TRANSPORTATION
 DIVISION OF HIGHWAYS/REGION 5/DISTRICT 8
 1102 EASTPORT PLAZA DRIVE
 COLLINSVILLE, ILLINOIS 62234-6198

COMPLETION DATE OF FIELD WORK PERFORMED
 LAND SURVEY: 6/25/2008 ROW STAKING: 9/25/2008

CONTRACT NO. 76A36
 FED. ROAD DIST. NO. 8 [ILLINOIS] FED. AID PROJECT