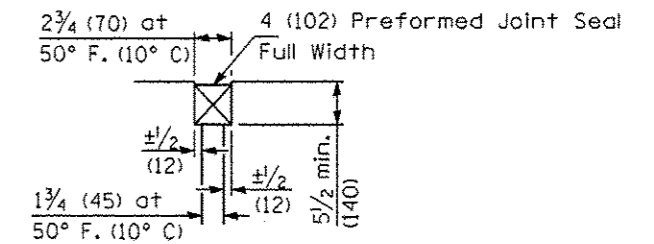
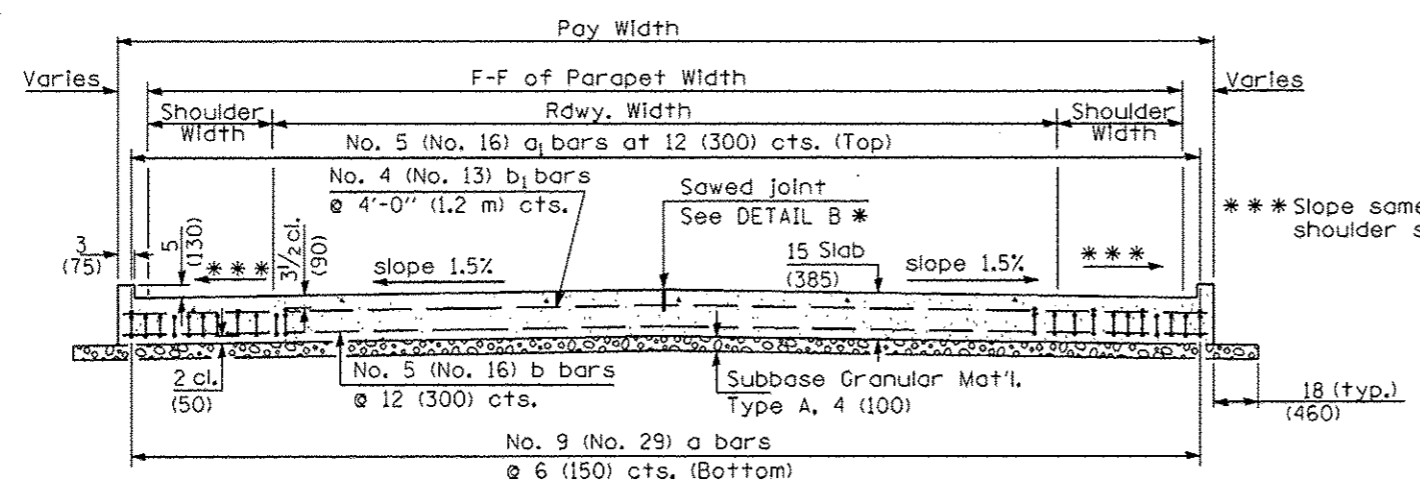


**PREFORMED JOINT SEAL**



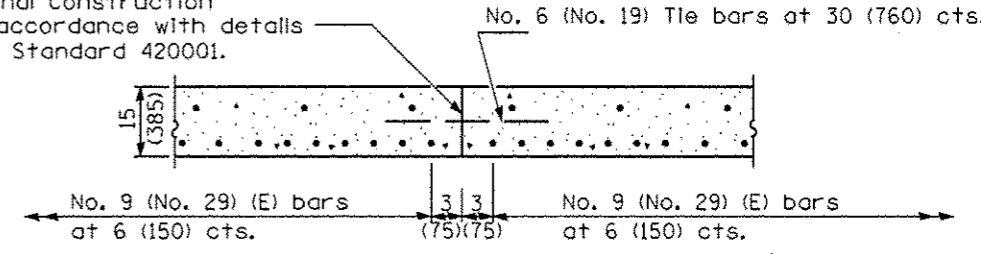
**DETAIL A**

**SECTION C-C**  
 ① Stagger No. 9 (No. 29) a bars as shown on plan - full width



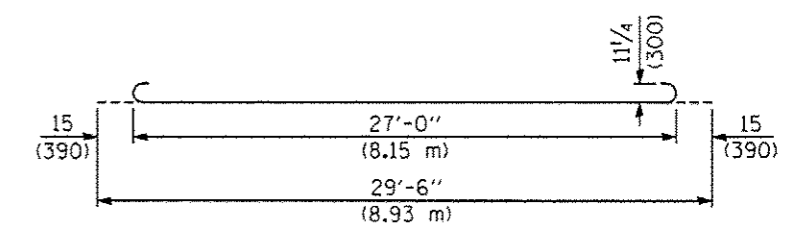
**SECTION D-D**  
 (See Plan for Dimensions not shown)

Longitudinal Construction Joint in accordance with details shown on Standard 420001.

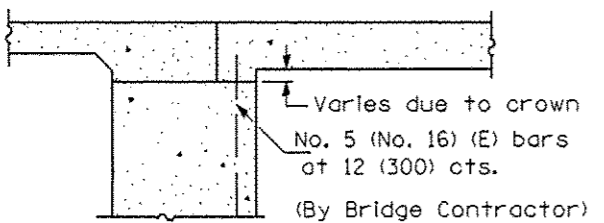


**OPTIONAL LONGITUDINAL CONSTRUCTION JOINT**

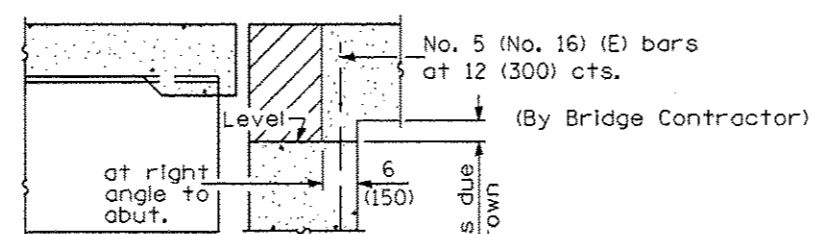
As approved by the Engineer, the Contractor may elect to reduce the widths of pour by use of the Optional Longitudinal Construction Joint shown. Joints shall be located at the edge of a traffic lane.



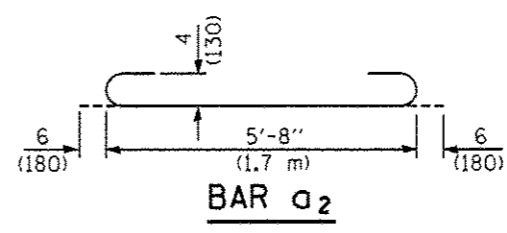
**BAR a**



**SECTION E-E**  
 (Integral Abutments)



**SECTION E-E**  
 (Jointed Abutments)



**BAR a2**

**DESIGN STRESSES**  
 fy = 60,000 p.s.i. (400 MPa)  
 f'c = 3,500 p.s.i. (24 MPa)  
 n = 8.5

BRIDGE APPROACH PAVEMENT		
SHEET NO.	TOTAL	(Sheet 3 of 4)
28	72	
<b>STANDARD 420401-06</b>		

Illinois Department of Transportation

APPROVED January 1, 2008  
*Ralph E. Anderson*  
 ENGINEER OF BRIDGES AND STRUCTURES

APPROVED January 1, 2008  
*Ken E. Han*  
 ENGINEER OF DESIGN AND ENVIRONMENT

ISSUED 1-1-1  
 16-1-1