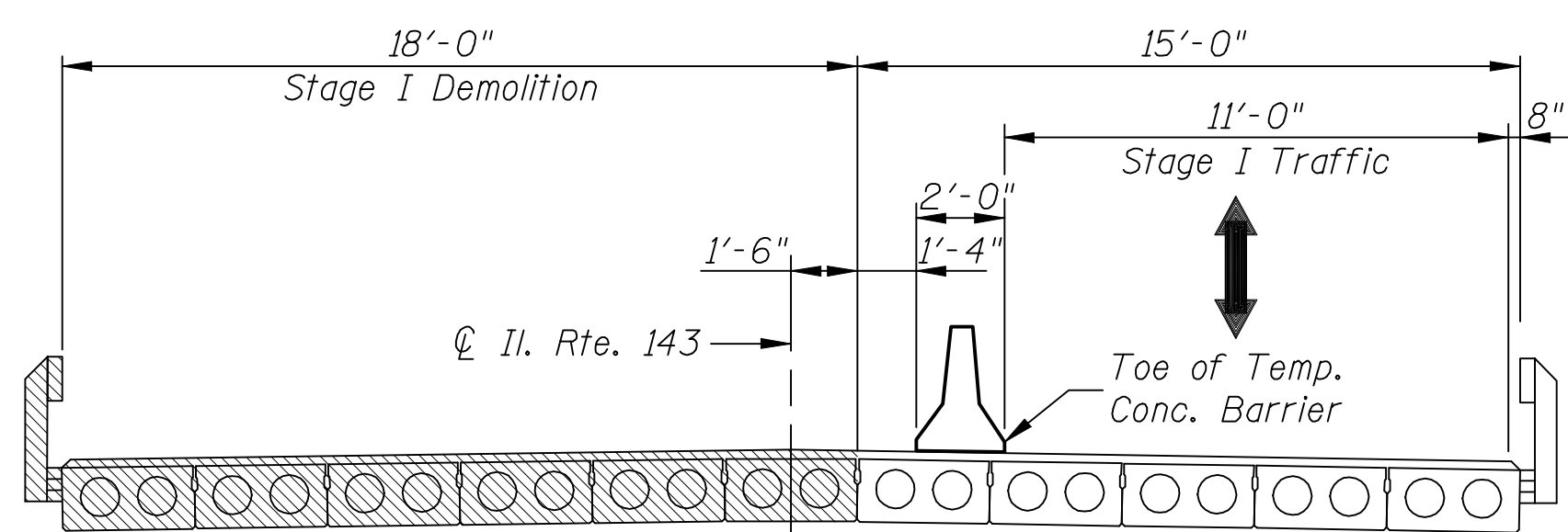
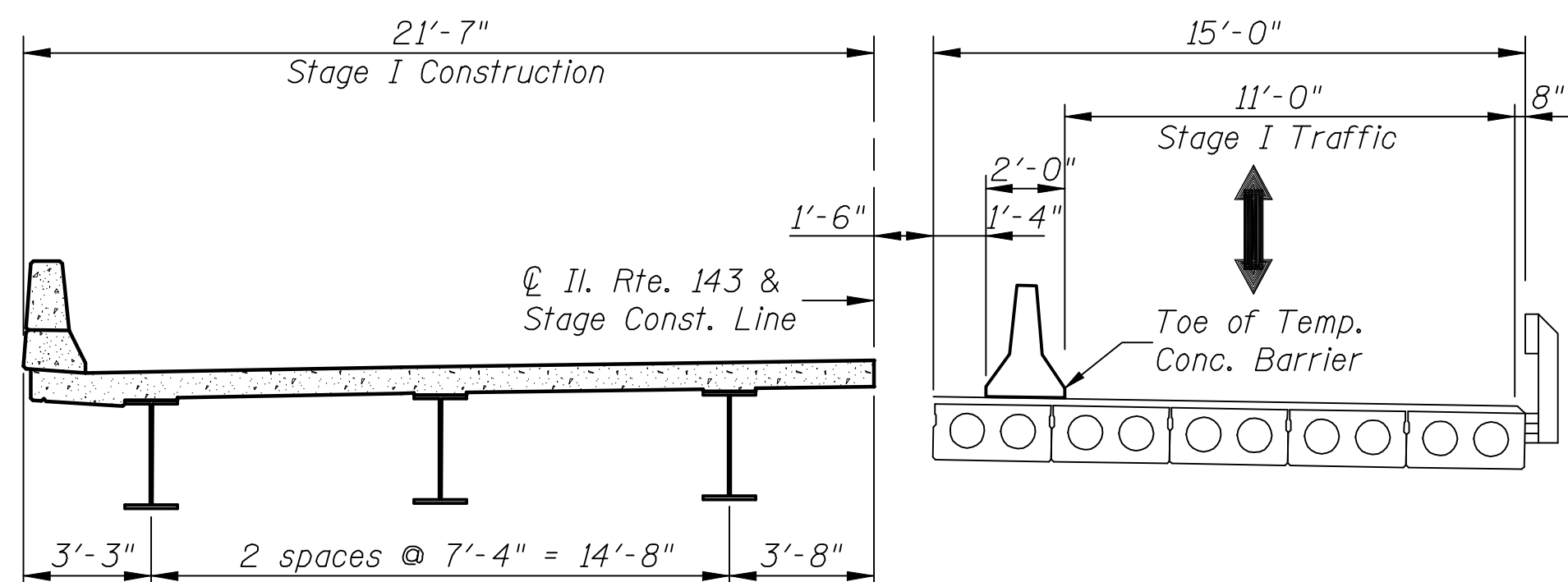


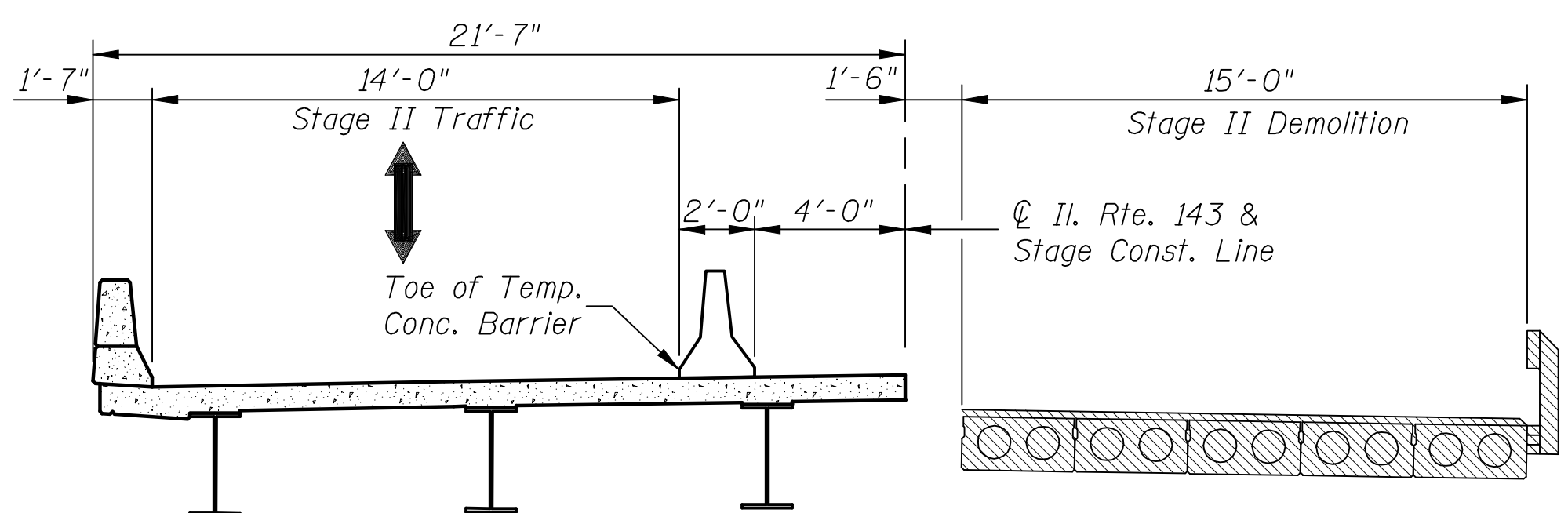
STATE OF ILLINOIS
DEPARTMENT OF TRANSPORTATION



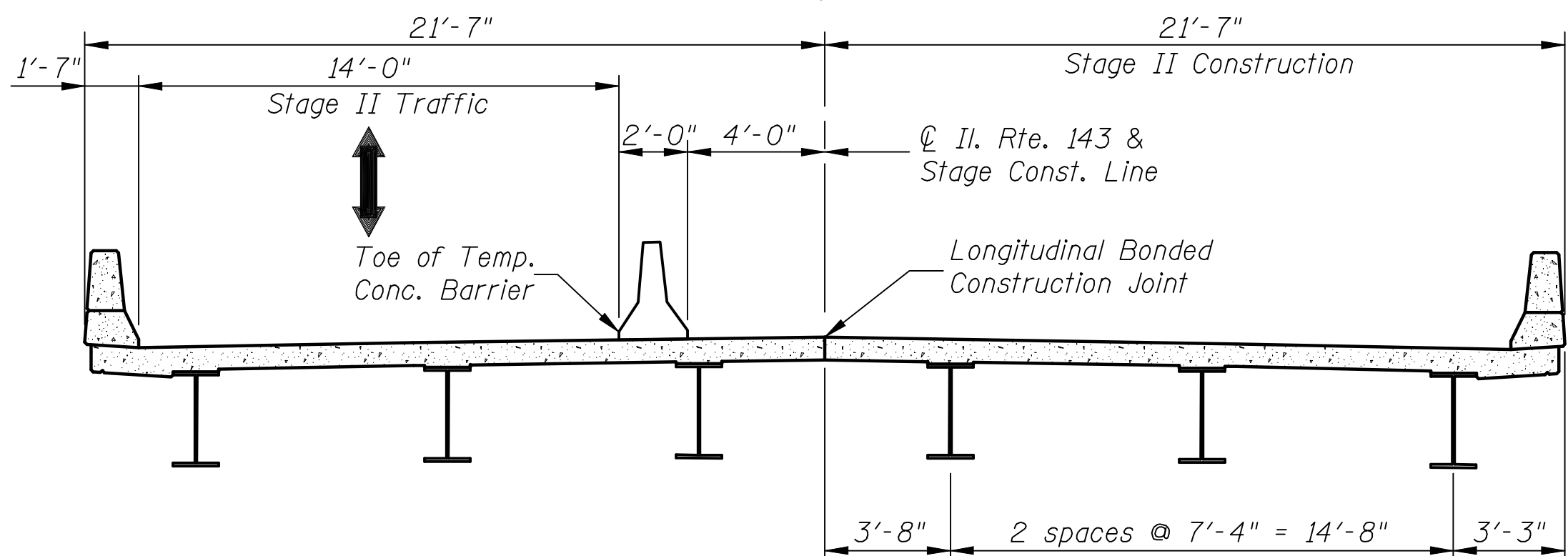
STAGE I DEMOLITION
(Looking East)



STAGE I CONSTRUCTION
(Looking East)

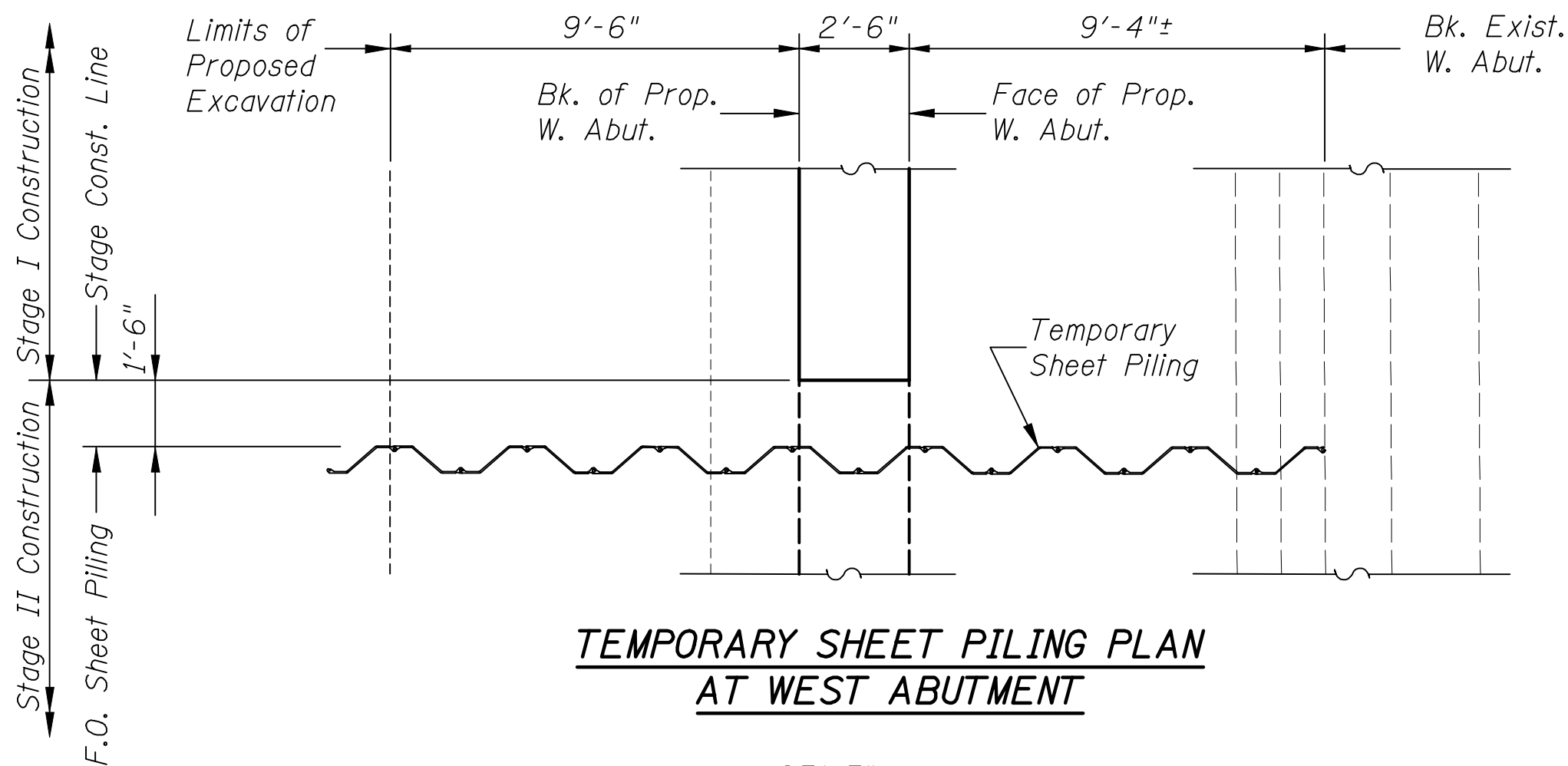


STAGE II DEMOLITION
(Looking East)

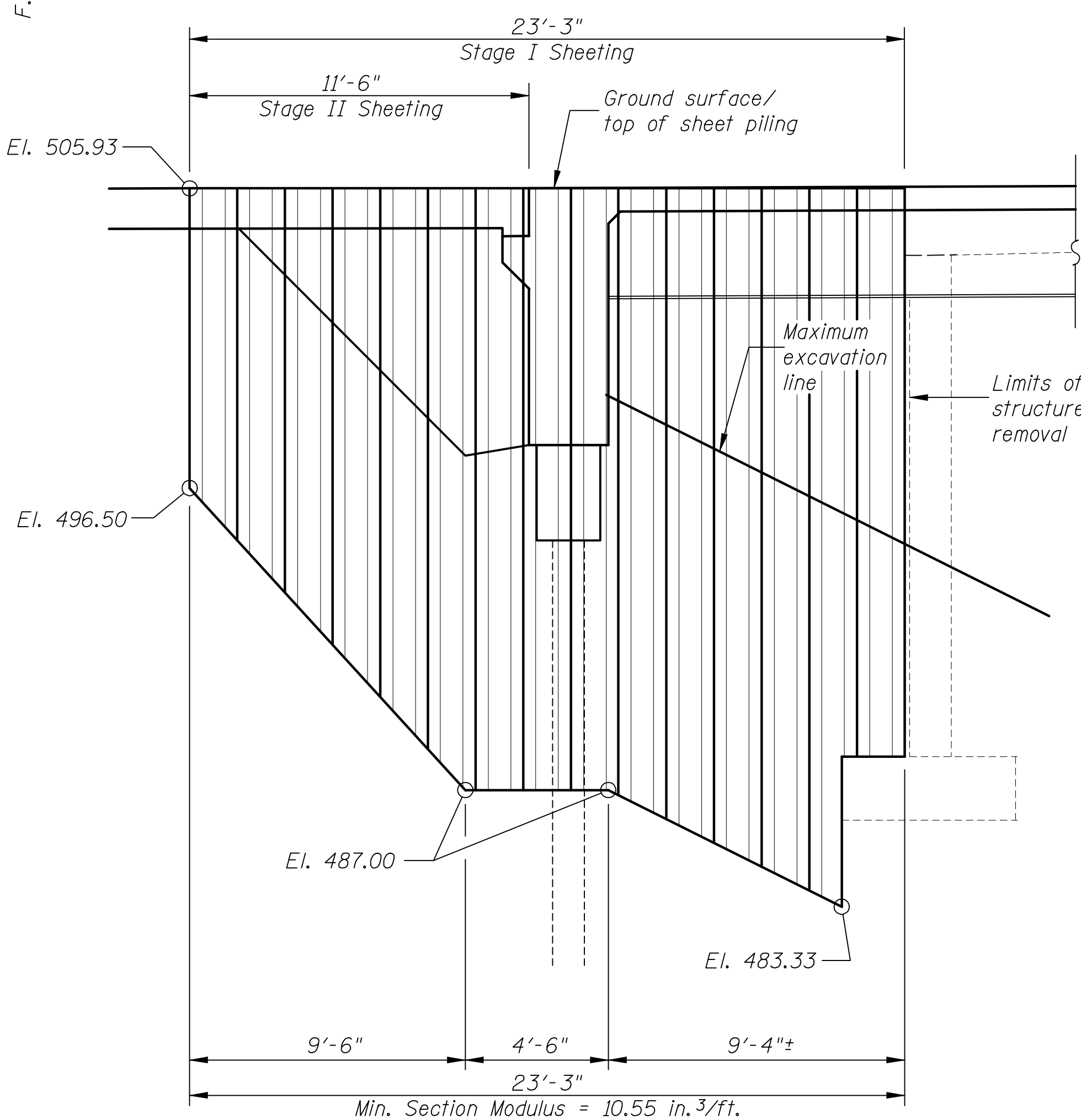


STAGE II CONSTRUCTION
(Looking East)

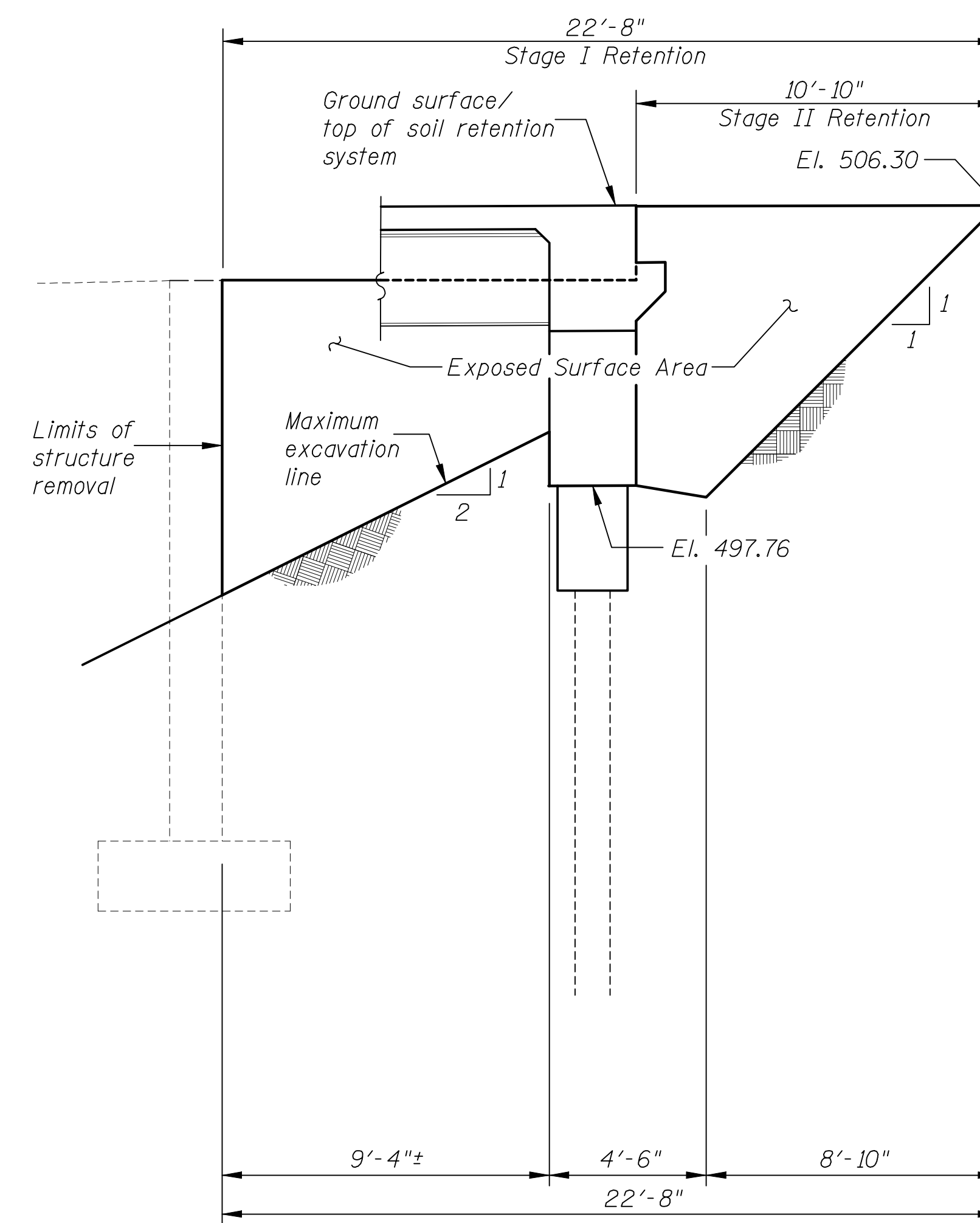
DESIGNED	B.G.H.
CHECKED	L.D.G.
DRAWN	K.H.L.
CHECKED	B.G.H.



TEMPORARY SHEET PILING PLAN
AT WEST ABUTMENT



TEMPORARY SHEET PILING ELEVATION
AT WEST ABUTMENT



TEMPORARY SOIL RETENTION SYSTEM
ELEVATION AT EAST ABUTMENT

NOTES

If the Contractor chooses to alter the temporary cantilevered sheet piling design requirements shown on the plans, a design submittal, including plan details and calculations, will be required for review and acceptance by the Engineer.
The Contractor shall connect the first sheet to the existing abutment wall to ensure stability of sheets driven to the top of the existing footing. This connection shall be reviewed and accepted by the Engineer and included in the cost for Temporary Sheet Piling.
See Roadway Plans for quantity of Temporary Concrete Barrier.

STAGE CONSTRUCTION DETAILS

SHEET NO. 3	F.A.P. RTE.	SECTION	COUNTY	TOTAL SHEETS	SHEET NO.
	793	40BR-1	MADISON	72	35
20 SHEETS	S.N. 060-0341		CONTRACT NO. 76A36		
FED. ROAD DIST. NO. _ ILLINOIS FED. AID PROJECT					