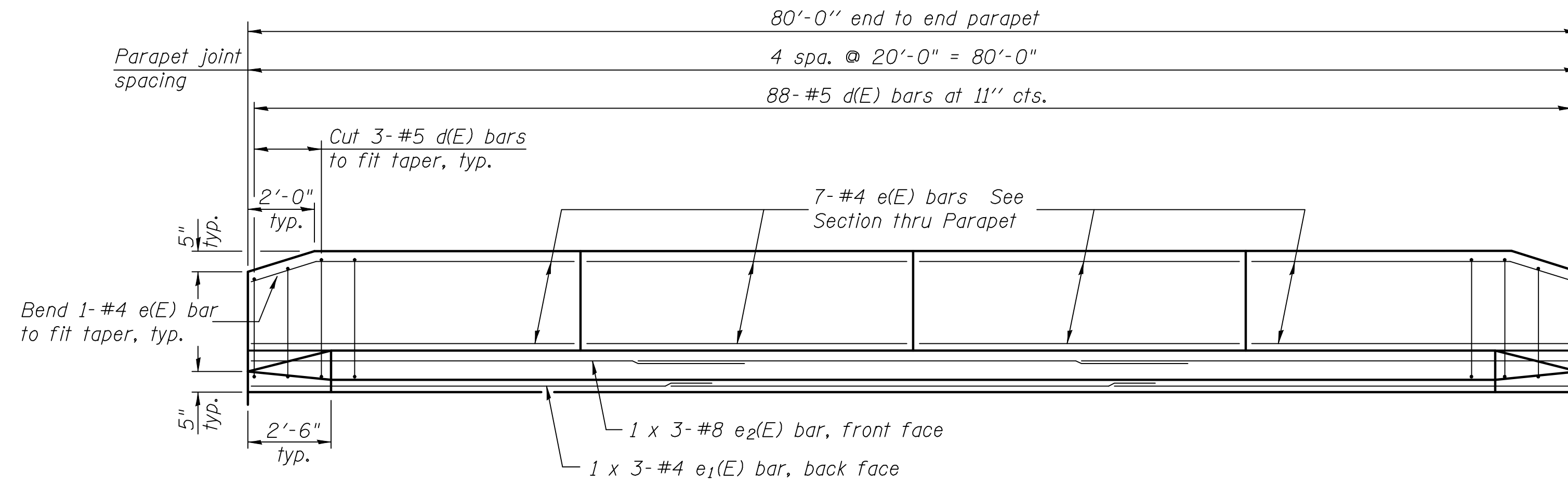
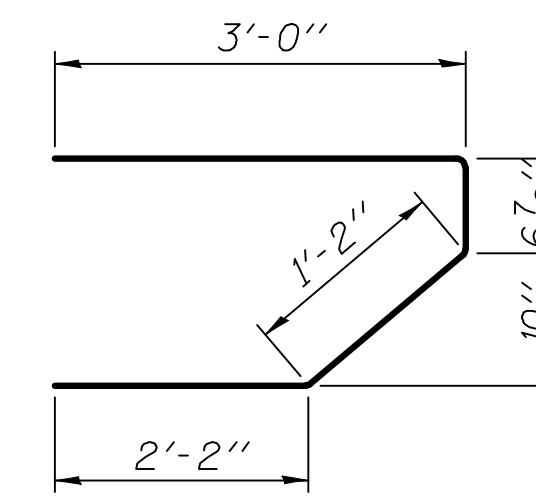


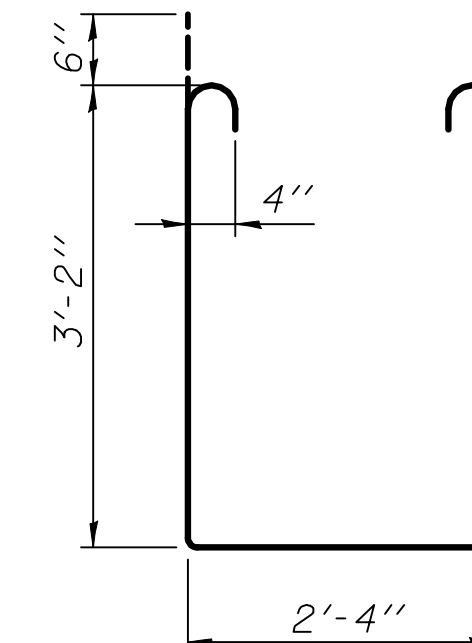
STATE OF ILLINOIS
DEPARTMENT OF TRANSPORTATION



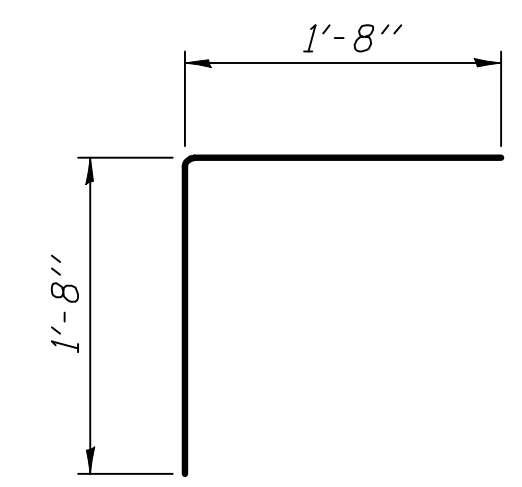
INSIDE ELEVATION OF PARAPET



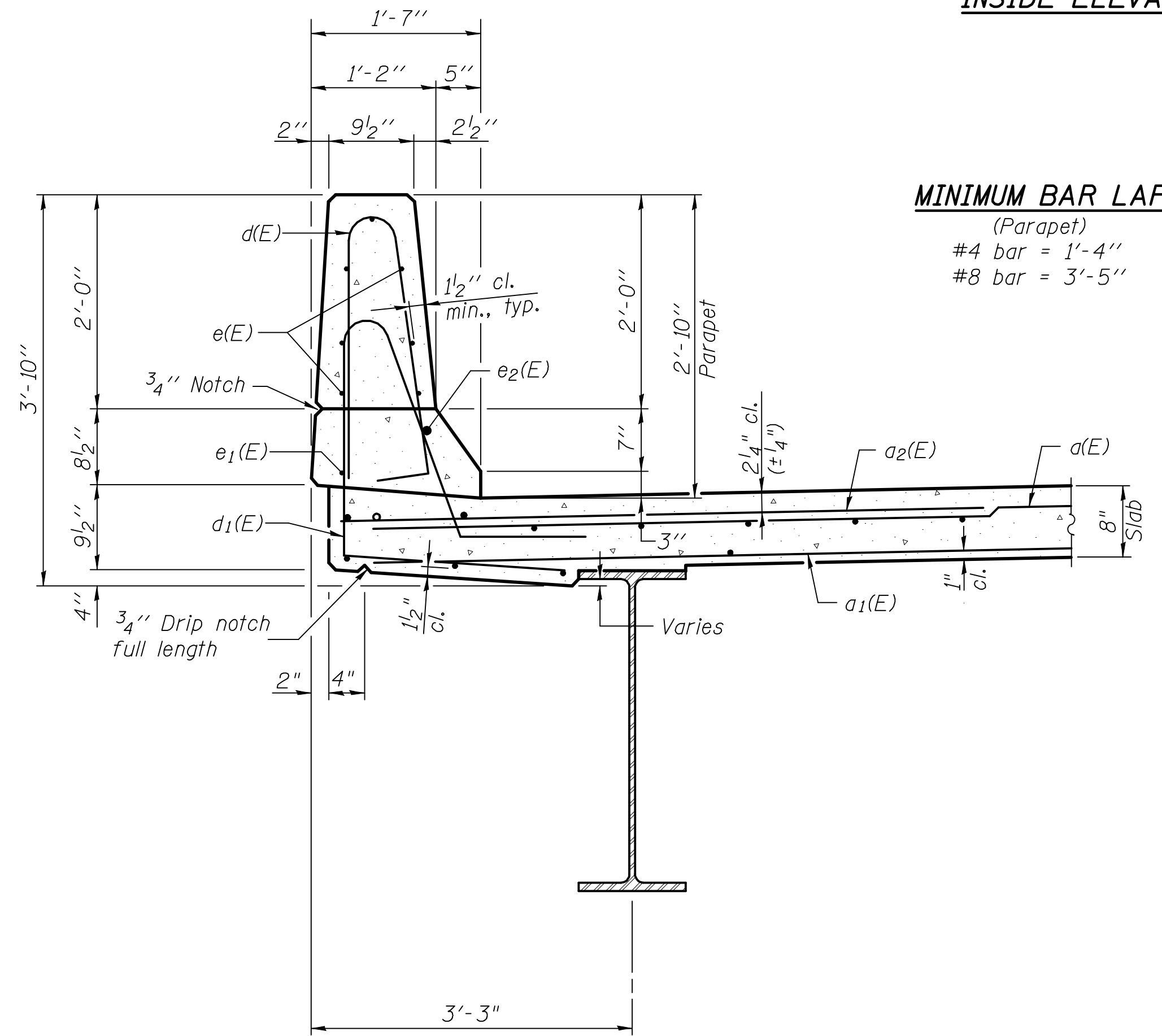
BAR s(E)



BAR s1(E)

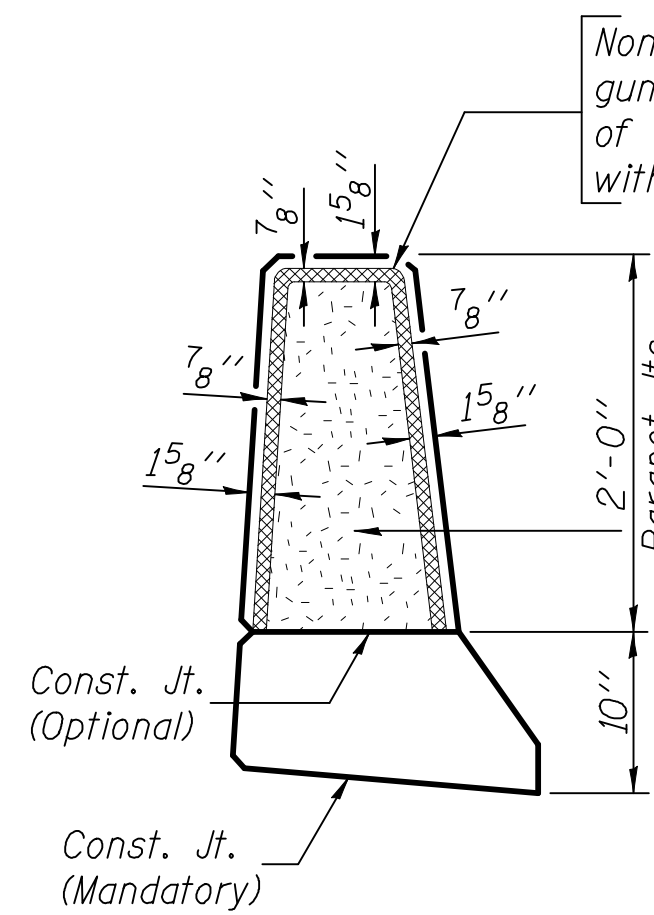


BAR v(E)



SECTION THRU PARAPET

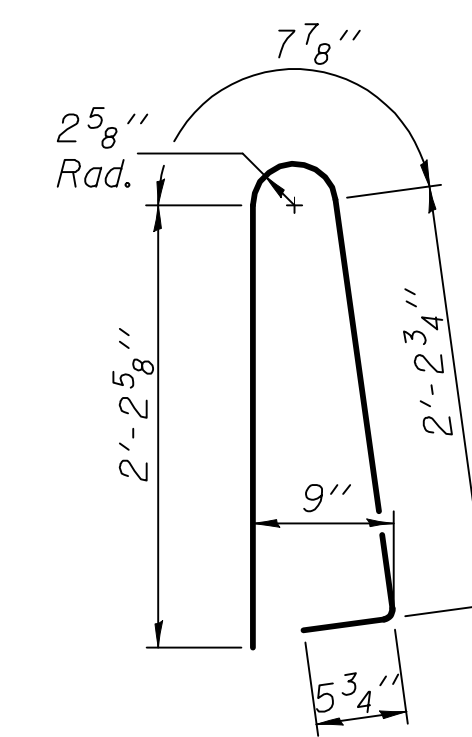
MINIMUM BAR LAP
(Parapet)
#4 bar = 1'-4"
#8 bar = 3'-5"



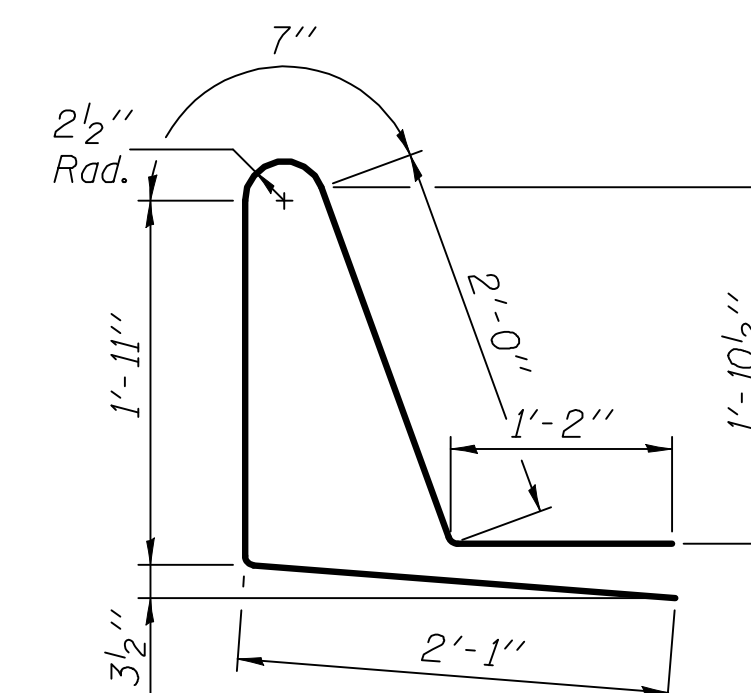
PARAPET JOINT DETAILS

Non-staining gray one component non-sag elastomeric gun grade polyurethane sealant meeting the requirements of ASTM C-920, Type S, Grade NS, Class 25. Use T with a 5/8" backer rod.

1/2" Preformed Self-Expanding Cork Joint Filler according to Article 1051.07 of the Std. Spec. Cost included with Concrete Superstructure.



BAR d(E)



BAR d1(E)

**SUPERSTRUCTURE
BILL OF MATERIAL**

Bar	No.	Size	Length	Shape
a(E)	350	#5	21'-0"	—
a1(E)	216	#5	20'-6"	—
a2(E)	350	#6	6'-0"	—
b(E)	138	#5	28'-1"	—
b1(E)	144	#5	21'-7"	—
d(E)	176	#5	5'-7"	U
d1(E)	176	#5	7'-9"	U
e(E)	56	#4	19'-9"	—
e1(E)	6	#4	27'-6"	—
e2(E)	6	#8	28'-11"	—
m(E)	8	#6	20'-3"	—
m1(E)	12	#6	21'-3"	—
m2(E)	24	#6	9'-1"	—
m3(E)	8	#6	7'-0"	—
m4(E)	8	#6	3'-4"	—
s(E)	84	#5	6'-11"	U
s1(E)	84	#4	9'-8"	U
v(E)	84	#5	3'-4"	L
Reinforcement Bars, Epoxy Coated		Pound	29,010	
Concrete Superstructure		Cu. Yds.	137.1	

Bars indicated thus 1 x 2-#4 etc., indicates 1 line of bars with 2 lengths per line.

SUPERSTRUCTURE DETAILS

DESIGNED	B.G.H.
CHECKED	L.D.G.
DRAWN	K.H.L.
CHECKED	B.G.H.

SHEET NO. 11 20 SHEETS	F.A.P. RTE. 793	SECTION 40BR-1	COUNTY MADISON	TOTAL SHEETS 72	SHEET NO. 43
	S.N. 060-0341		CONTRACT NO. 76A36		
FED. ROAD DIST. NO. _ ILLINOIS FED. AID PROJECT					