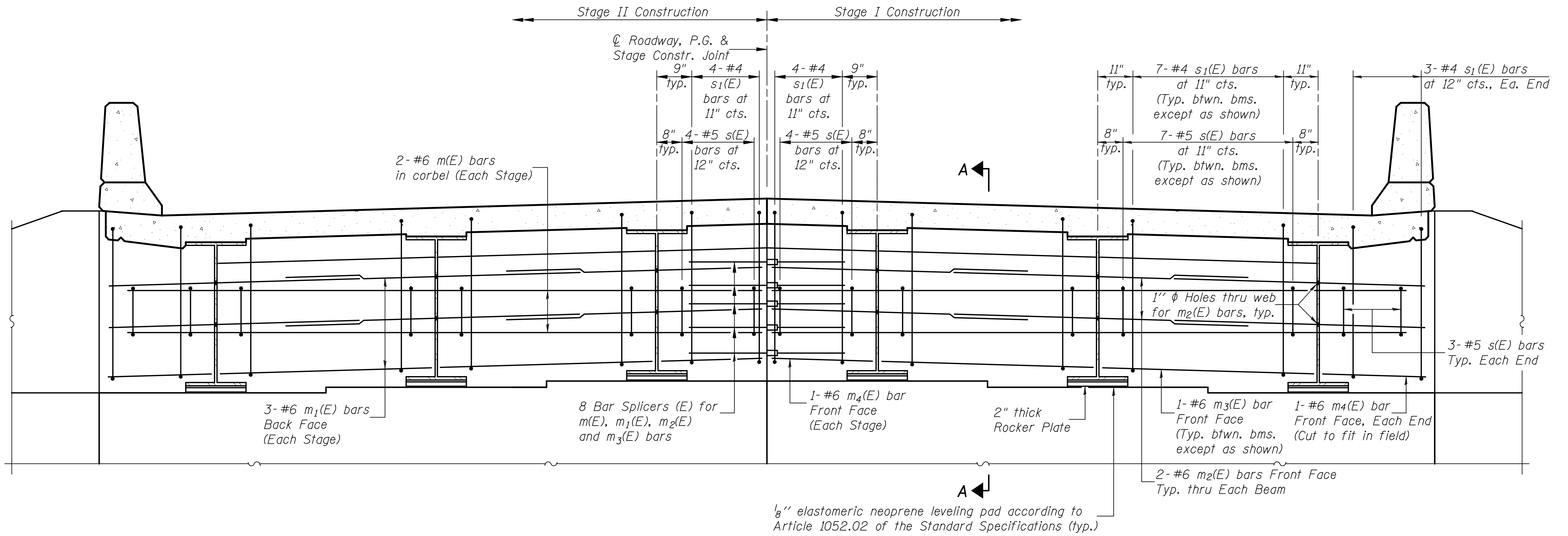


0600341.76A36.12_DIAP.DGN SEPT. 30, 2008

STATE OF ILLINOIS
DEPARTMENT OF TRANSPORTATION



Notes:

Reinforcement bars in diaphragm are billed with superstructure on sheet 11 of 20.

Concrete in diaphragm is included with Concrete Superstructure on sheet 11 of 20.

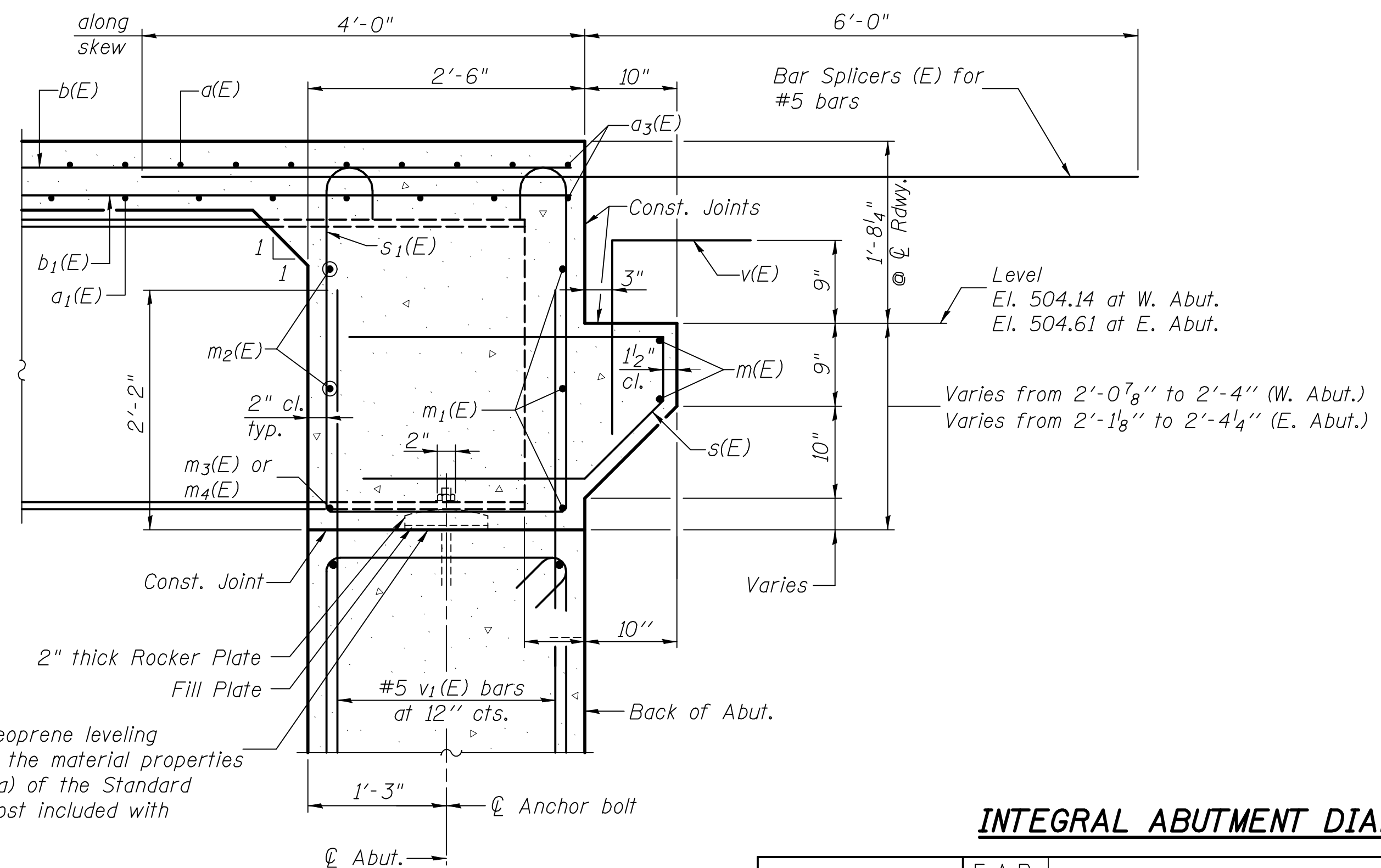
For details of bars s(E) & s₁(E) see sheet 11 of 20. The s(E) and s₁(E) bars shall be placed parallel to the beams. Spacing for these bars shall be at right angles to the beams.

MIN. BAR LAP

#6 bar = 2'-9"

DIAPHRAGM ELEVATION AT WEST ABUTMENT

(Looking West)



SECTION A-A

INTEGRAL ABUTMENT DIAPHRAGM DETAILS

DESIGNED	B.G.H.
CHECKED	L.D.G.
DRAWN	K.H.L.
CHECKED	B.G.H.

SHEET NO. 12 20 SHEETS	F.A.P. RTE. 793	SECTION 40BR-1	COUNTY MADISON	TOTAL SHEETS 72	SHEET NO. 44
	S.N. 060-0341		CONTRACT NO. 76A36		
FED. ROAD DIST. NO. _ ILLINOIS FED. AID PROJECT					