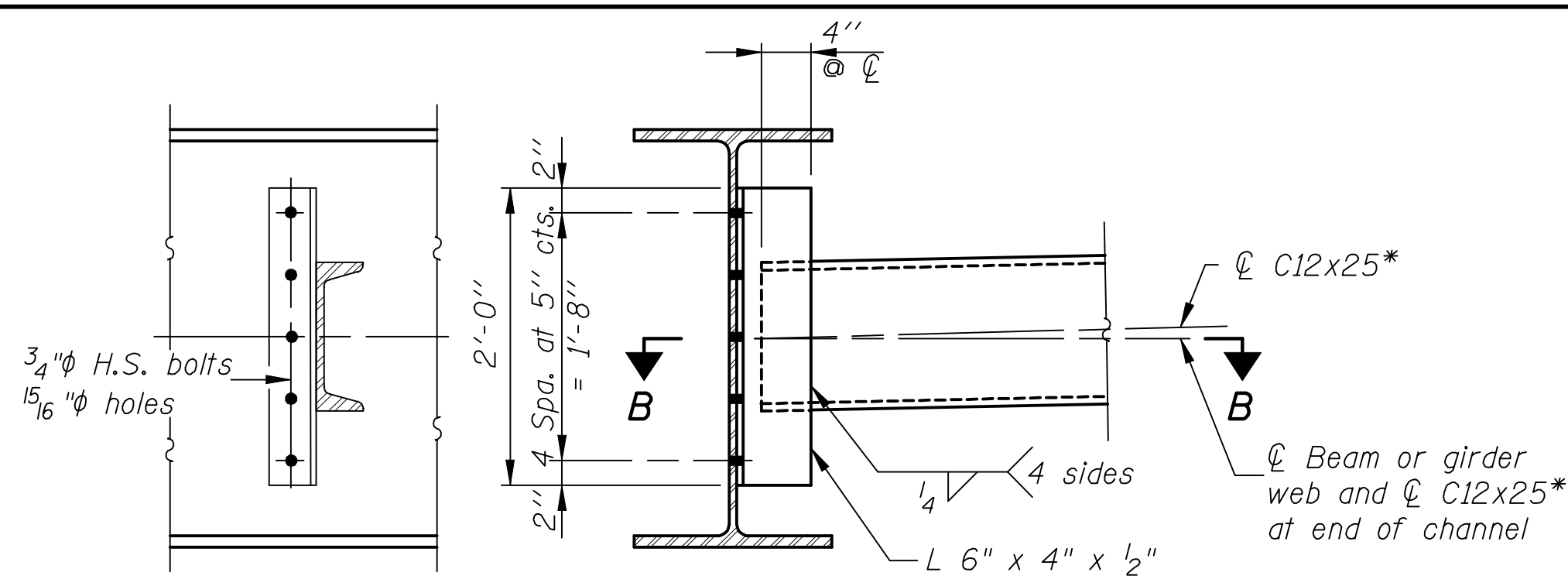
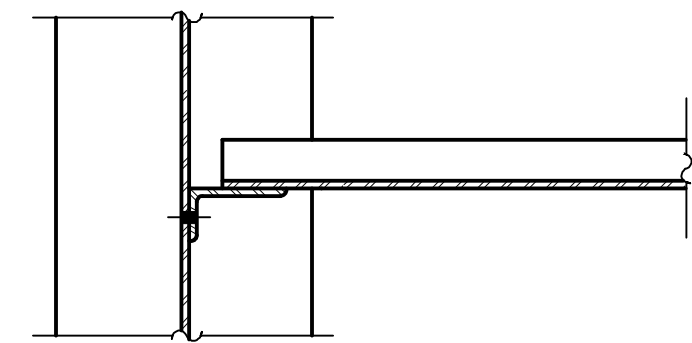


STATE OF ILLINOIS  
DEPARTMENT OF TRANSPORTATION

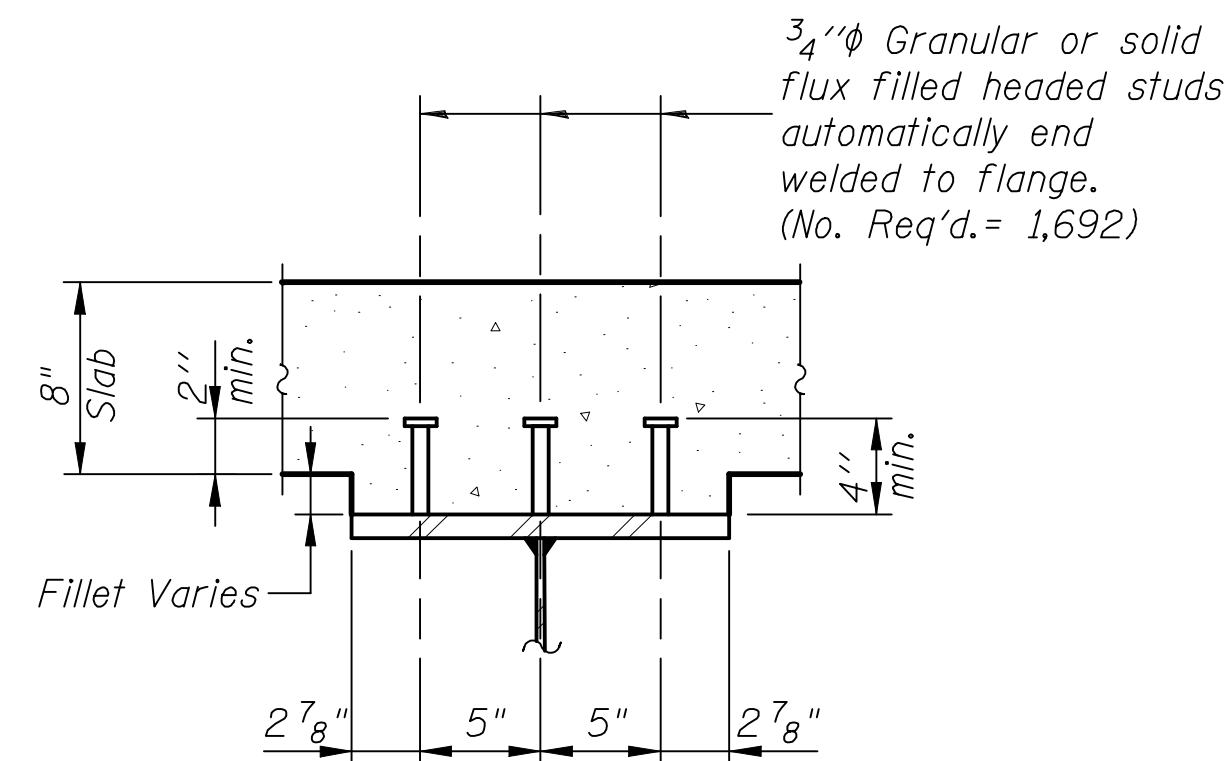


**DIAPHRAGM D**  
(12 Required)

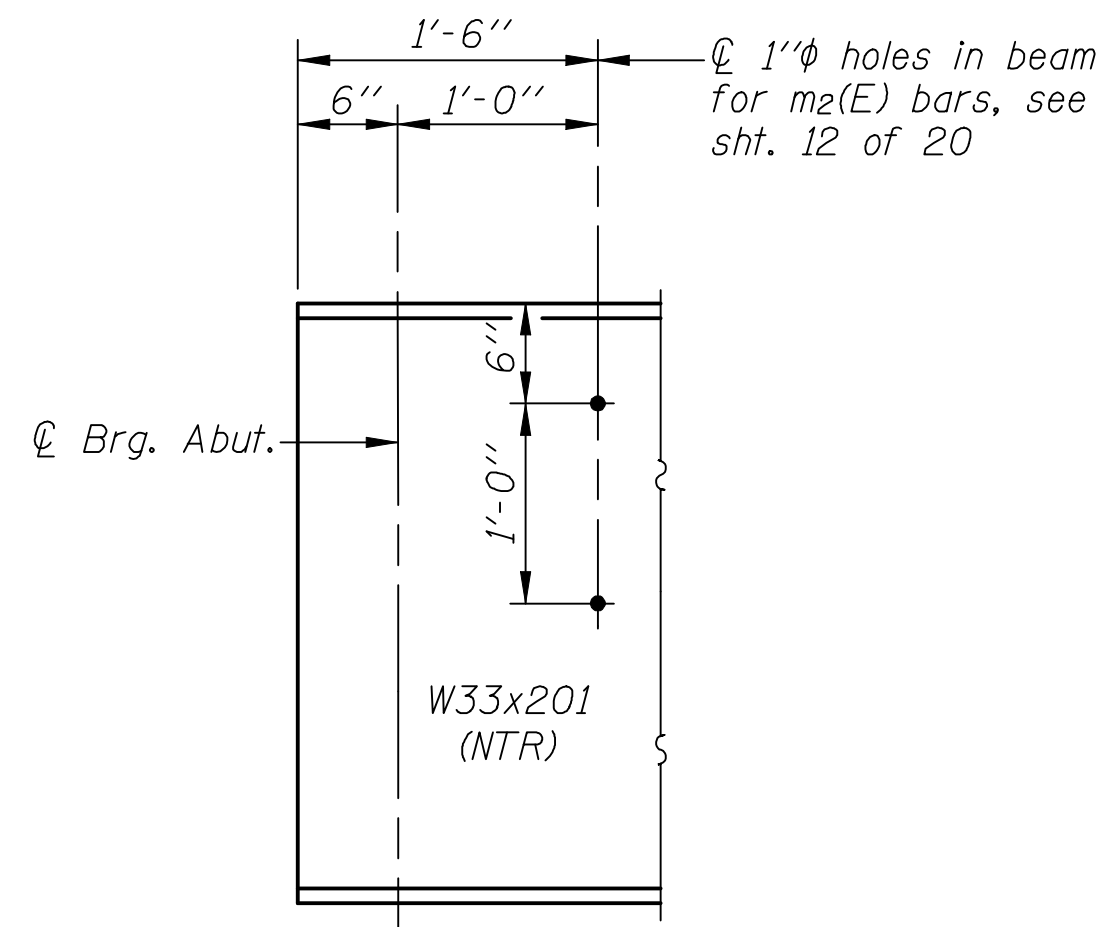


**SECTION B-B**

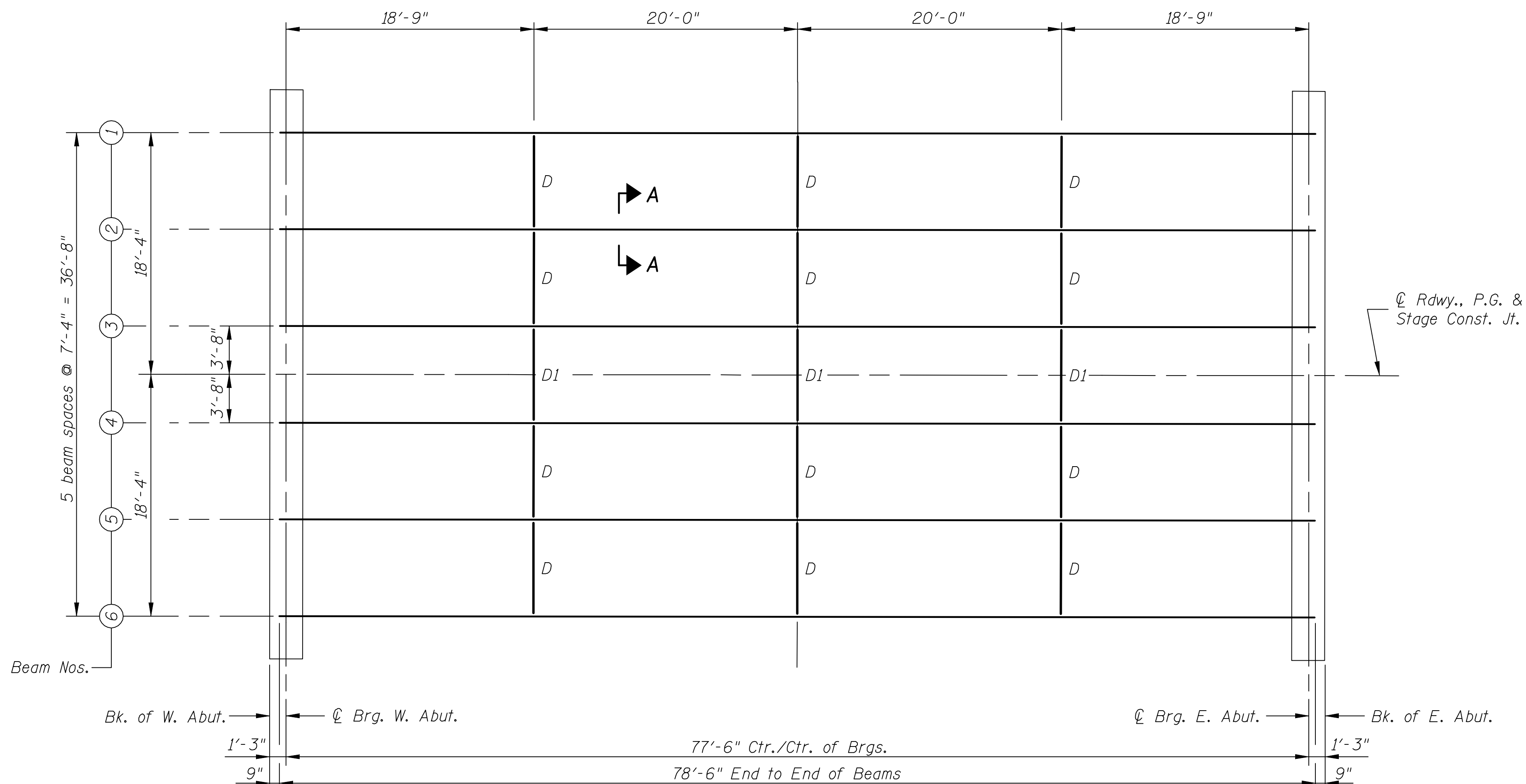
\* Alternate channel C12x30 is permitted to facilitate material acquisition. Calculated weight of structural steel is based on the lighter section.



**SECTION A-A**

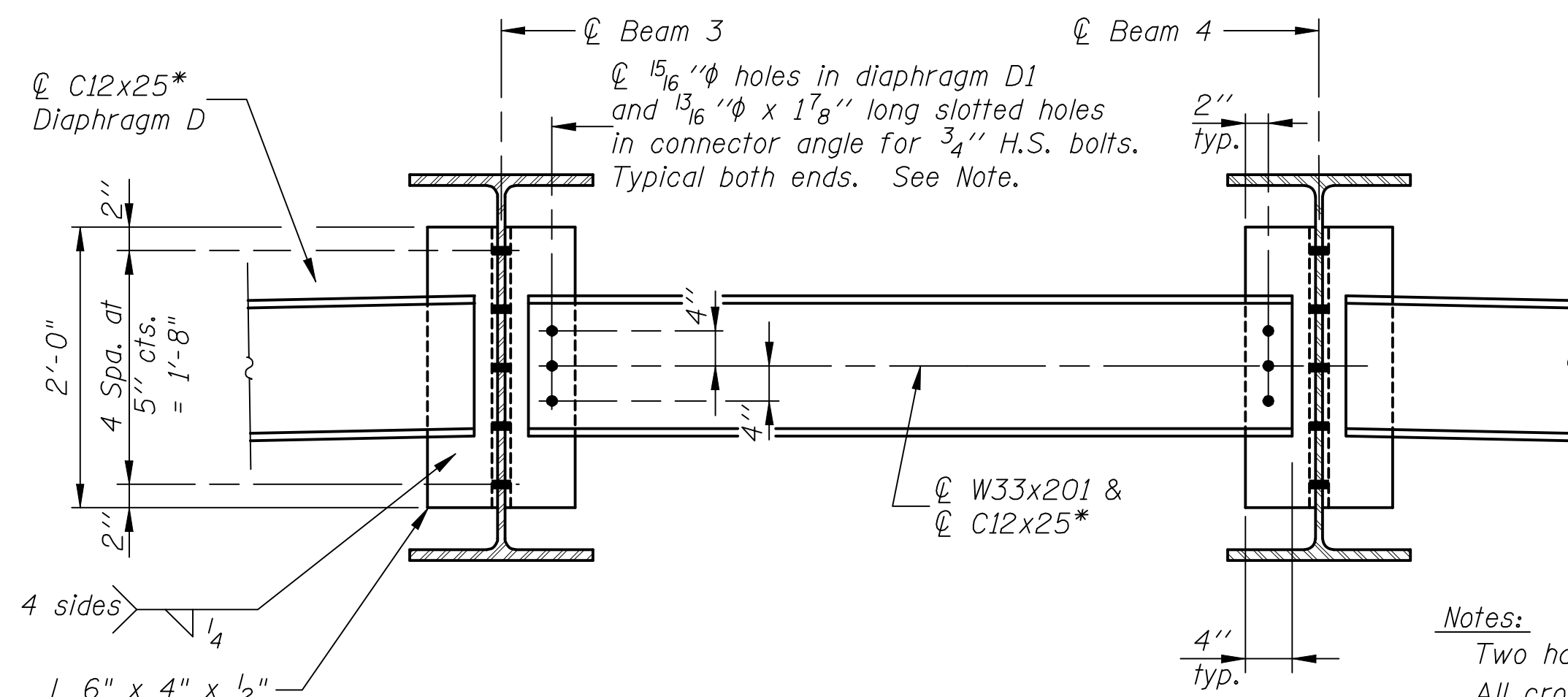


**TYP. END OF BEAM ELEVATION**



**FRAMING PLAN**

All Beams are W33x201 (NTR) and AASHTO M270, Gr. 50

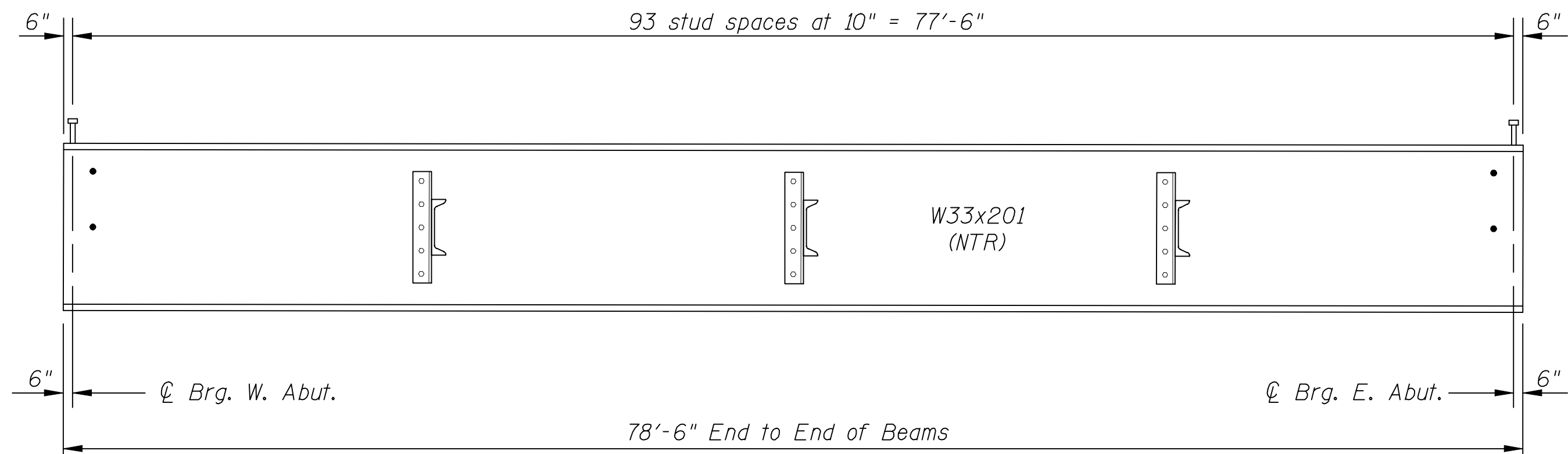


**DIAPHRAGM D1**  
(3 Required)

DESIGNED	B.G.H.
CHECKED	L.D.G.
DRAWN	K.H.L.
CHECKED	B.G.H.

**Notes:**

- Two hardened washers required for each set of oversized holes.
- All cross frames or diaphragms between beams or girders shall be installed with erection pins and bolts in accordance with the erection plan approved by the Engineer. Individual cross frames or diaphragms at supports may be temporarily disconnected to install bearing anchor rods.
- Load carrying components designated "NTR" shall conform to the Supplemental Requirements for Notch Toughness, Zone 2.
- All diaphragms and connecting angles shall conform to the requirements of AASHTO M270, Gr. 50.
- Bolts in slots shall be finger tight until the second stage pour is complete. Position slots so bolts start at one end with no concrete load and finish near the opposite end under deck load allowing maximum displacement without laterally stressing main members. All holes shall have appropriate hardened or plate washers.



**BEAM ELEVATION**

**STRUCTURAL STEEL**

SHEET NO. 13 20 SHEETS	F.A.P. RTE. 793	SECTION 40BR-1	COUNTY MADISON	TOTAL SHEETS 72	SHEET NO. 45
	S.N. 060-0341		CONTRACT NO. 76A36		
FED. ROAD DIST. NO. _ ILLINOIS FED. AID PROJECT					