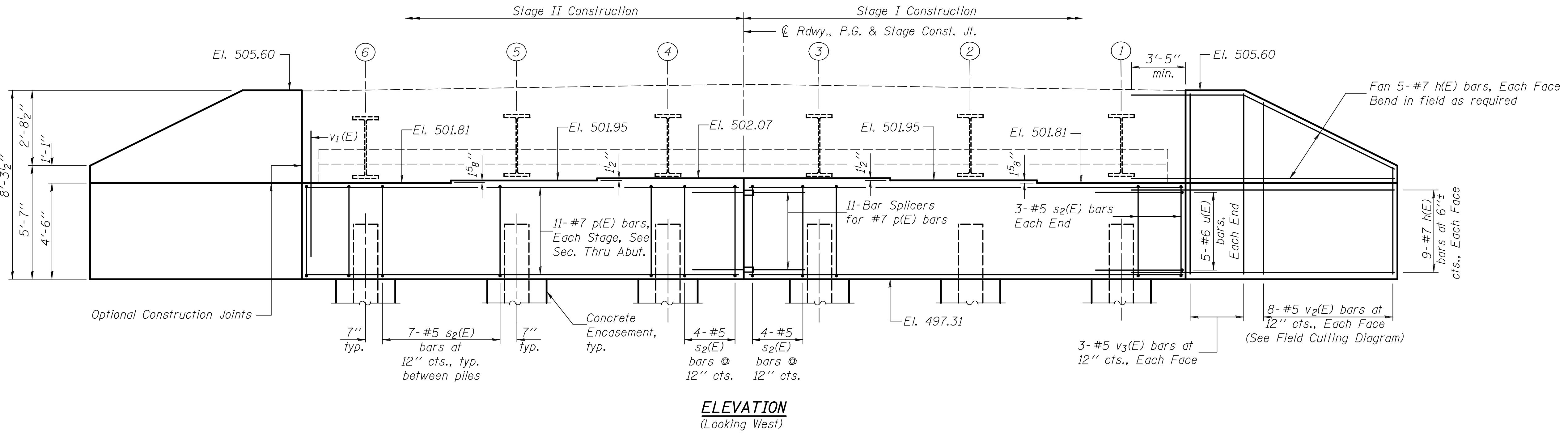


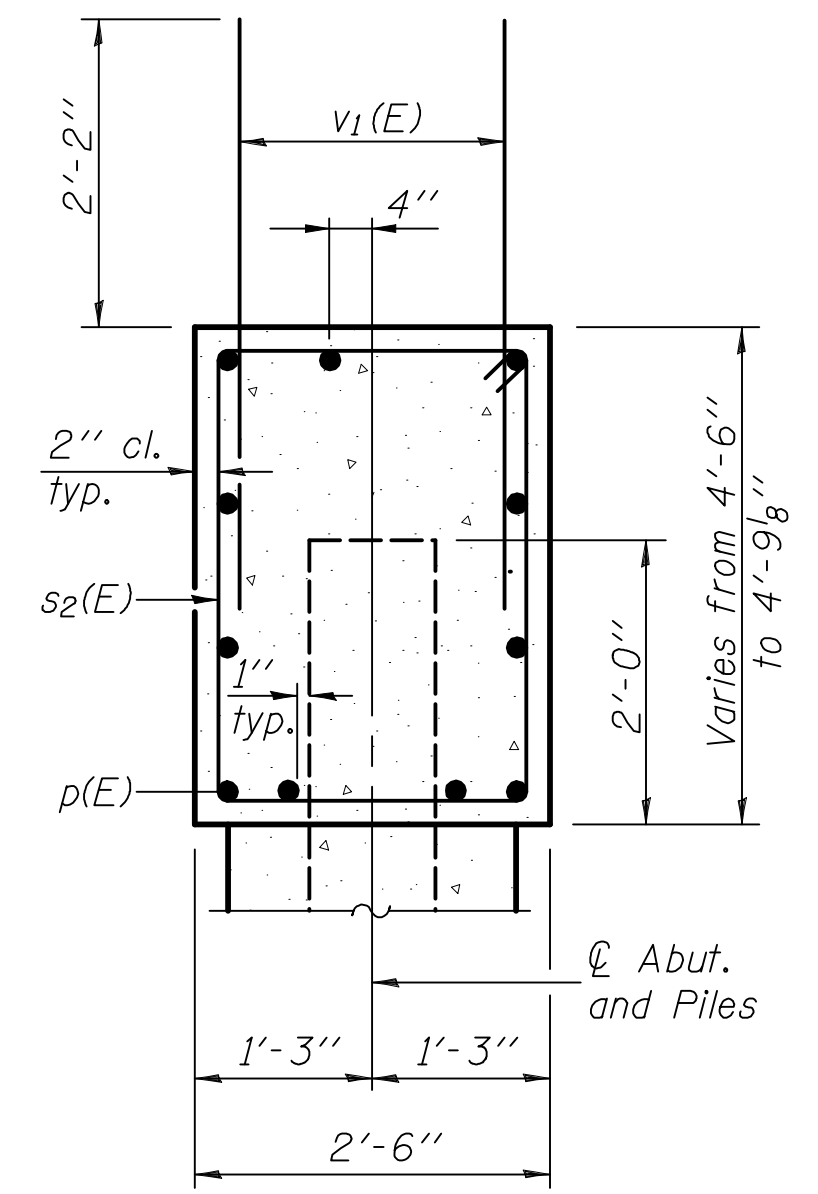
0600341.76A.36.15.WABT.DGN FEB. 21, 2013

Note: Four steps monolithically with cap.

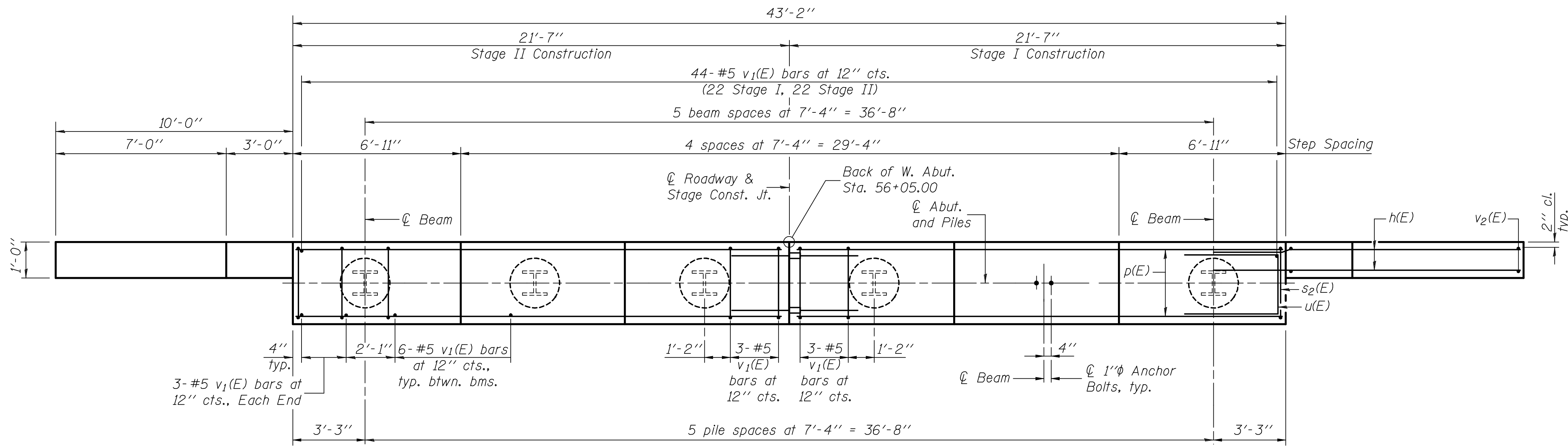
STATE OF ILLINOIS
DEPARTMENT OF TRANSPORTATION



ELEVATION
(Looking West)



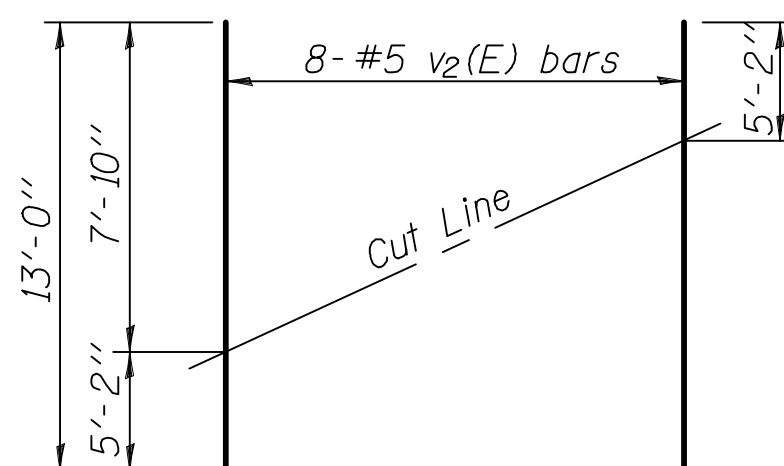
SEC. THRU ABUT.



PLAN N

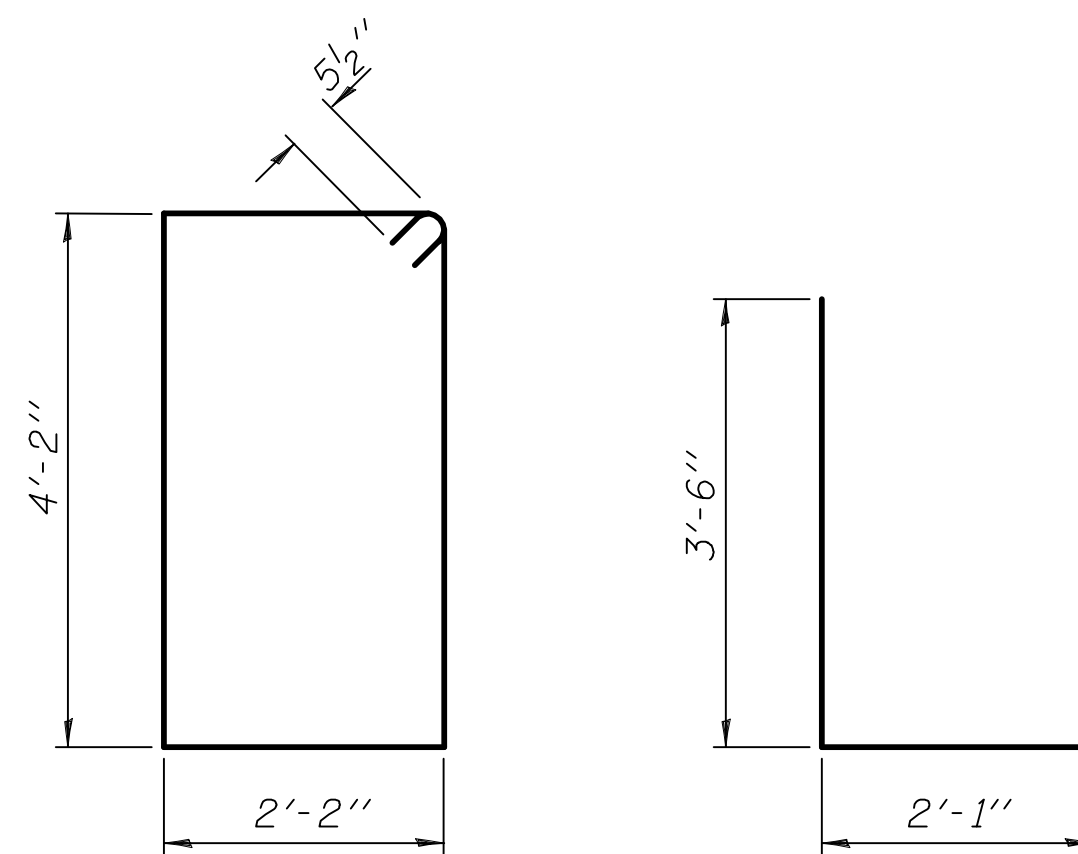
PILE DATA

Type: HP 14x73
Nominal Required Bearing: 578 k
Factored Resistance Available: 289 k
Est. Length: 42 ft.
No. Production Piles: 6
No. Test Piles: 0



FIELD CUTTING DIAGRAM

Order v2(E) full length. Cut as shown and use remainder of bars in opposite face.



BAR s2(E)

BAR u(E)

BILL OF MATERIAL

Bar	No.	Size	Length	Shape
h(E)	56	#7	14'-0"	—
p(E)	22	#7	21'-3"	—
s2(E)	42	#5	13'-7"	□
u(E)	10	#6	9'-1"	—
v1(E)	80	#5	4'-4"	—
v2(E)	16	#5	13'-0"	—
v3(E)	12	#5	7'-10"	—
Structure Excavation		Cu. Yd.	131	
Concrete Structures		Cu. Yd.	24.0	
Reinforcement Bars, Epoxy Coated		Pound	3,970	
Bar Splicers (E)		Each	11	
Furnishing Steel Piles HP 14x73		Foot	252	
Driving Piles		Foot	252	
Concrete Encasement		Cu. Yd.	3.3	

For details of Bar Splicers, see sheet 17 of 20.
For details of piles and Concrete Encasement, see sheet 18 of 20.

WEST ABUTMENT

DESIGNED	B.G.H.
CHECKED	L.D.G.
DRAWN	K.H.L.
CHECKED	B.G.H.

AI-O 5-16-08

SHEET NO. 15 20 SHEETS	F.A.P. RTE. 793	SECTION 40BR-1	COUNTY MADISON	TOTAL SHEETS 72	SHEET NO. 47
	S.N. 060-0341		CONTRACT NO. 76A36		
FED. ROAD DIST. NO. _ ILLINOIS FED. AID PROJECT					

H.M. & G. INC. 6020.001