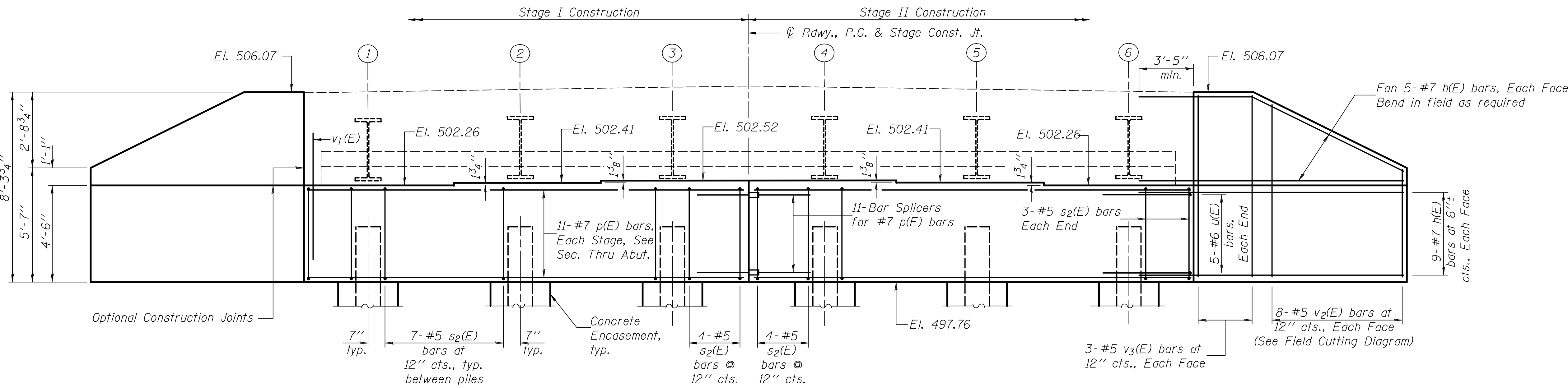


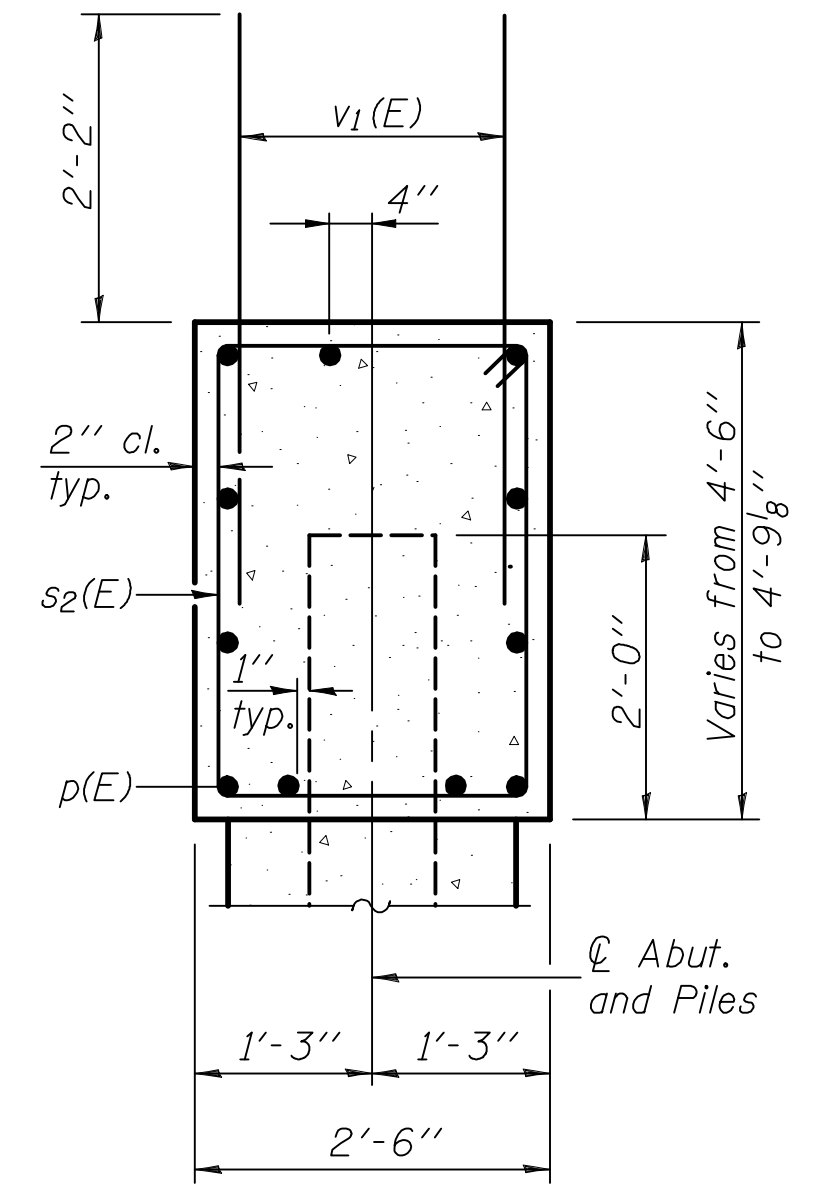
0600341.76A.36.16.EABT.DGN FEB. 26, 2009

Note: Four steps monolithically with cap.

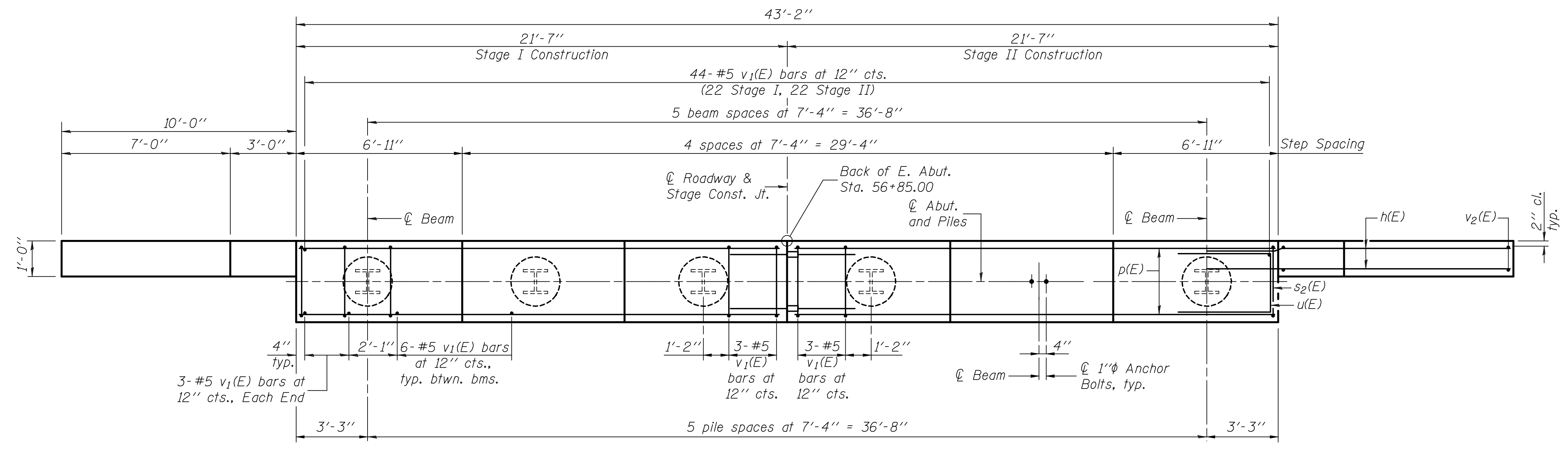
**STATE OF ILLINOIS  
DEPARTMENT OF TRANSPORTATION**



**ELEVATION**  
(Looking East)



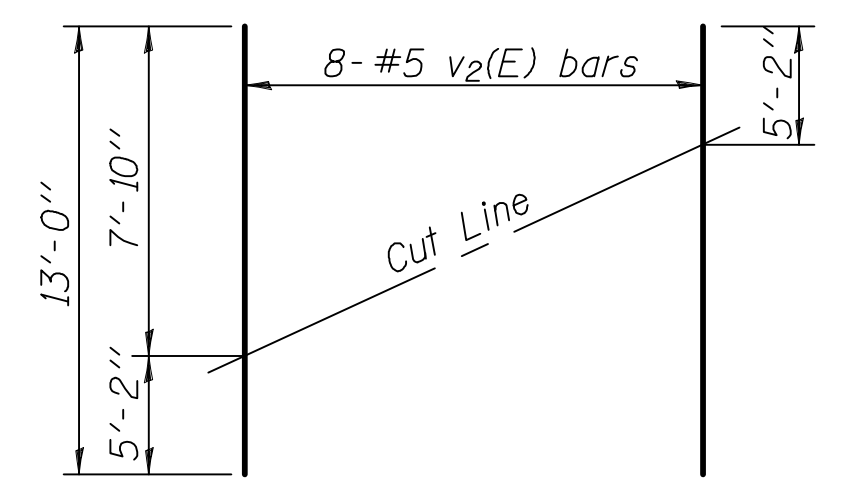
**SEC. THRU ABUT.**



**PLAN**

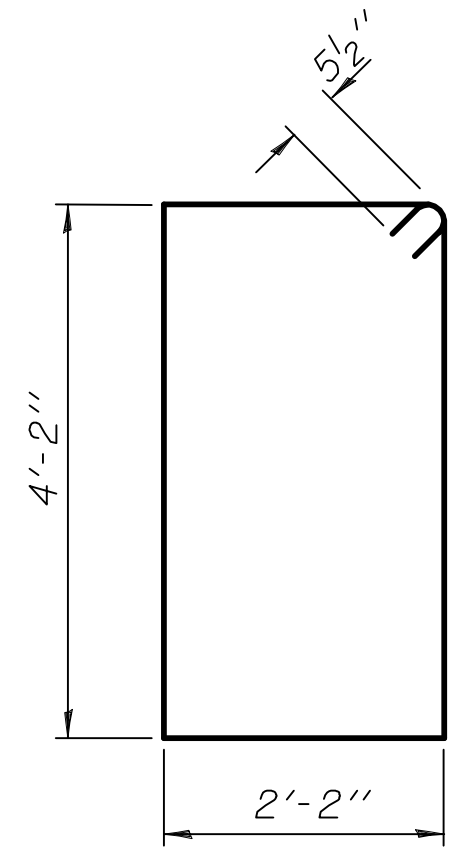
**PILE DATA**

Type: HP 14x73  
 Nominal Required Bearing: 578 k  
 Factored Resistance Available: 289 k  
 Est. Length: 41 ft.  
 No. Production Piles: 5  
 No. Test Piles: 1

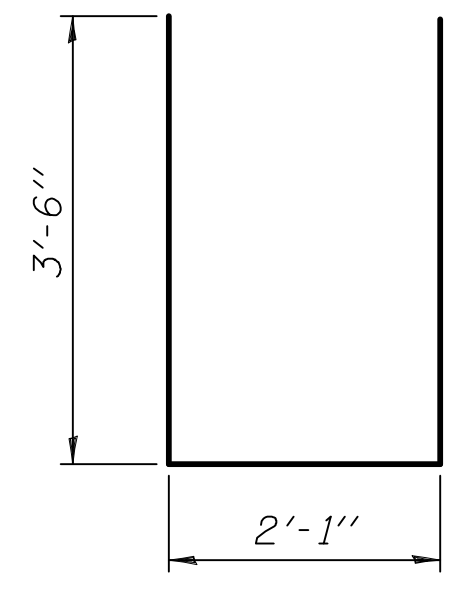


**FIELD CUTTING DIAGRAM**

Order v2(E) full length. Cut as shown and use remainder of bars in opposite face.



**BAR s2(E)**



**BAR u(E)**

**BILL OF MATERIAL**

Bar	No.	Size	Length	Shape
h(E)	56	#7	14'-0"	—
p(E)	22	#7	21'-3"	—
s2(E)	42	#5	13'-7"	□
u(E)	10	#6	9'-1"	—
v1(E)	80	#5	4'-4"	—
v2(E)	16	#5	13'-0"	—
v3(E)	12	#5	7'-10"	—
Structure Excavation		Cu. Yd.	131	
Concrete Structures		Cu. Yd.	24.0	
Reinforcement Bars, Epoxy Coated		Pound	3,970	
Bar Splicers (E)		Each	11	
Furnishing Steel Piles HP 14x73		Foot	205	
Driving Piles		Foot	205	
Test Pile Steel HP 14x73		Each	1	
Concrete Encasement		Cu. Yd.	3.3	

For details of Bar Splicers, see sheet 17 of 20.  
 For details of piles and Concrete Encasement, see sheet 18 of 20.

**EAST ABUTMENT**

DESIGNED	B.G.H.
CHECKED	L.D.G.
DRAWN	K.H.L.
CHECKED	B.G.H.

AI-O 5-16-08

SHEET NO. 16 20 SHEETS	F.A.P. RTE. 793	SECTION 40BR-1	COUNTY MADISON	TOTAL SHEETS 72	SHEET NO. 48
	S.N. 060-0341		CONTRACT NO. 76A36		
FED. ROAD DIST. NO. _ ILLINOIS FED. AID PROJECT					

H.M. & G. INC. 6020.001