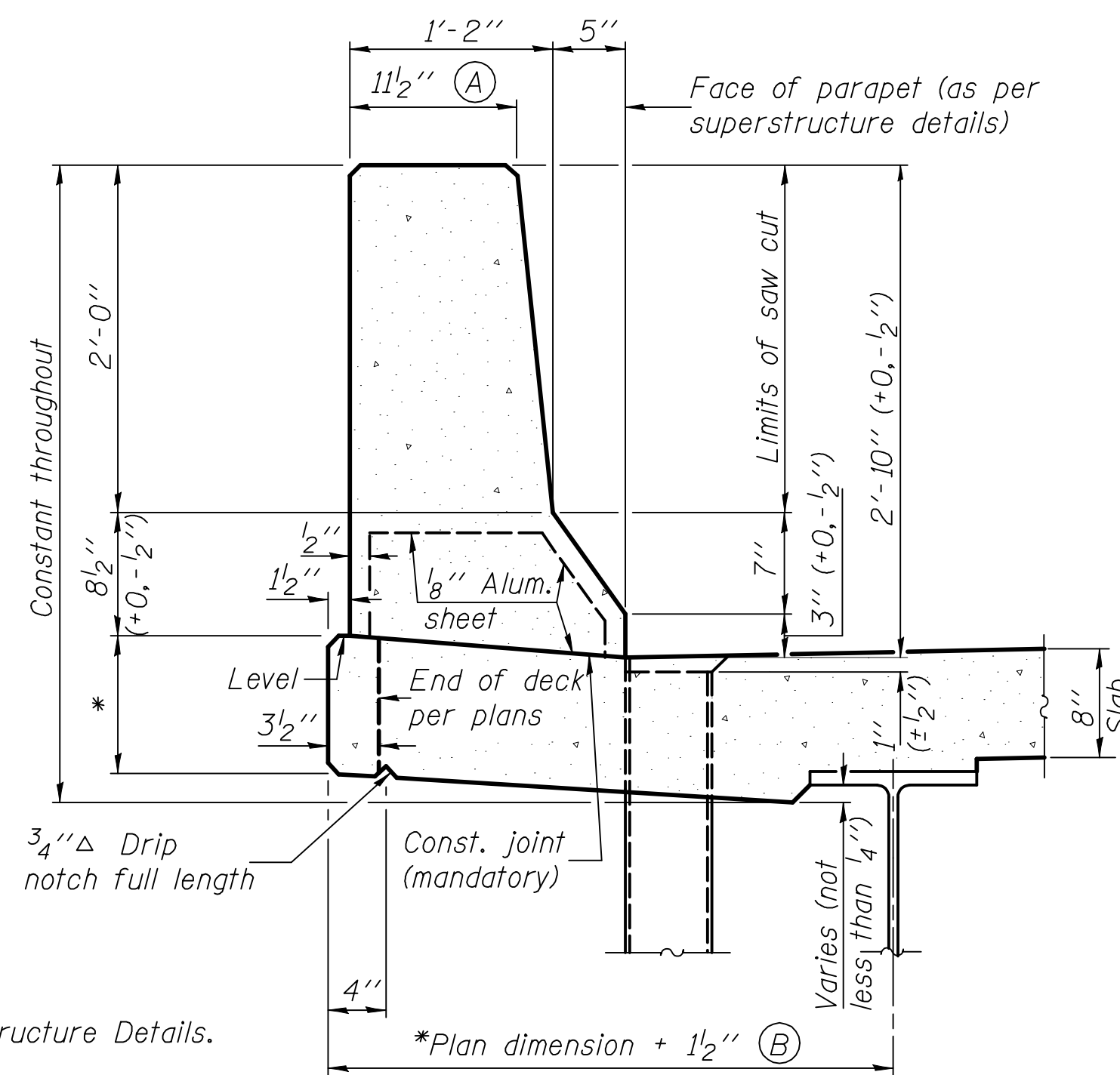


STATE OF ILLINOIS  
DEPARTMENT OF TRANSPORTATION

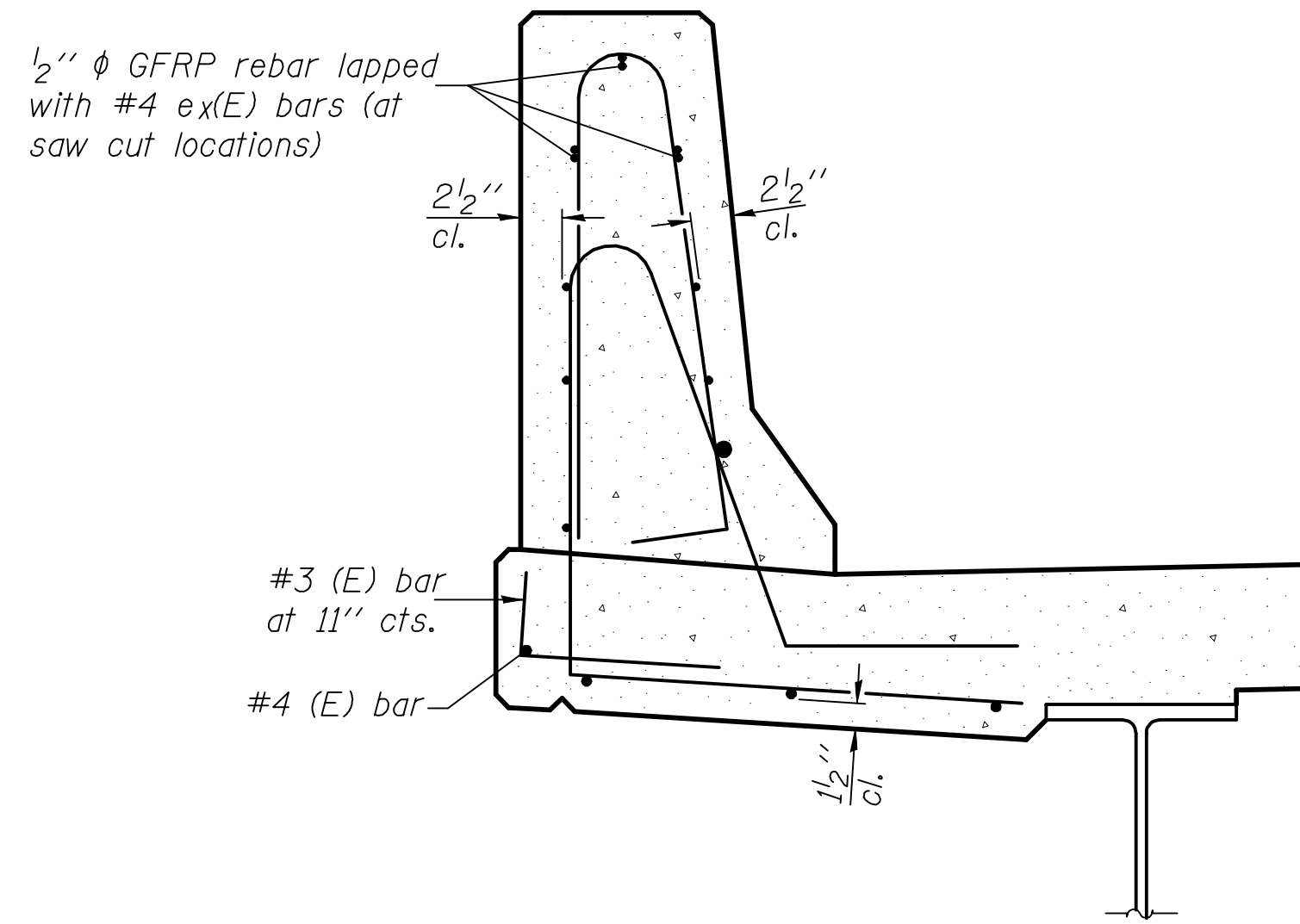
**GENERAL NOTES**

All dimensions shall remain the same as shown on superstructure details, except dimensions A and B which are to be revised as shown to provide additional clearance. Additional concrete needed to revise dimension A and B = 0.0165 cu. yds./ft. for 34" parapet or = 0.0223 cu. yds./ft. for 42" parapet. Place aluminum sheet in curb portion at and near piers. Full thickness saw cut at all joint locations in lieu of cork joint filler. Steel superstructure shown. Other superstructure types similar.



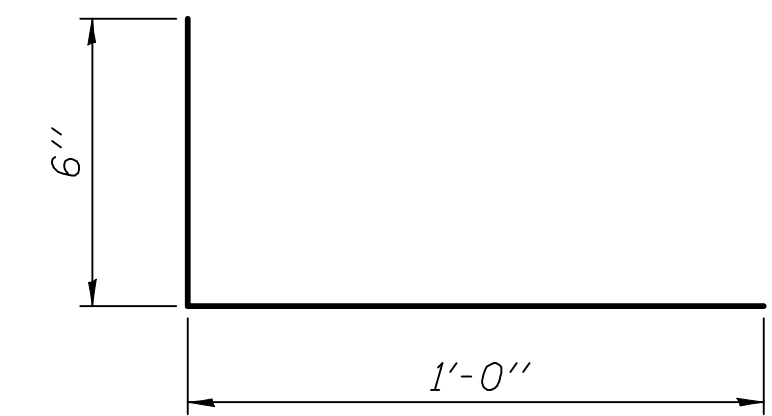
**34" F SHAPE PARAPET SECTION**  
(Showing dimensions)

\*See Superstructure Details.

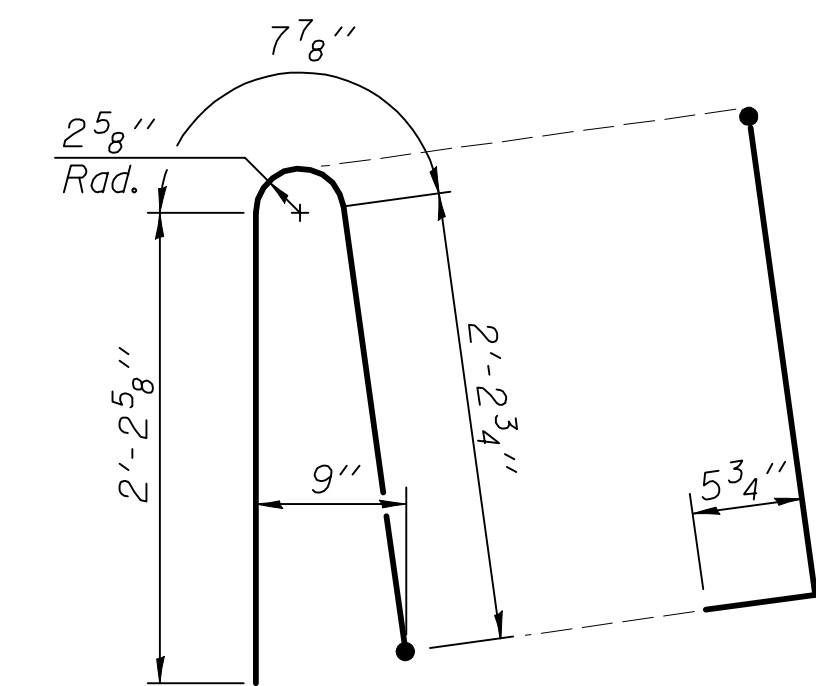


**SECTION**

(34" parapet shown - 42" parapet similar)  
(Showing reinforcement clearances for slip forming and additional reinforcement bars)

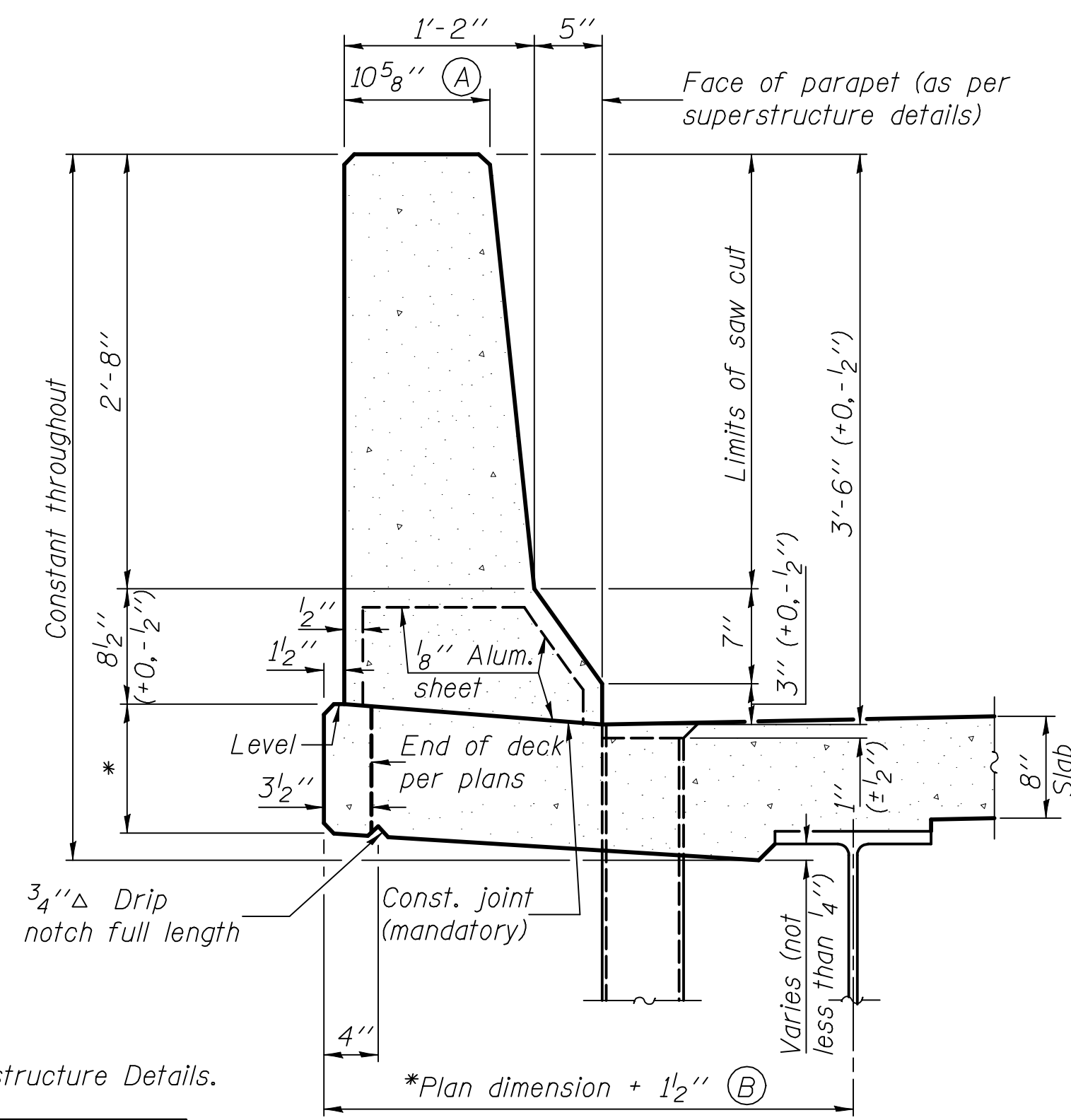


**#3 (E) BAR**



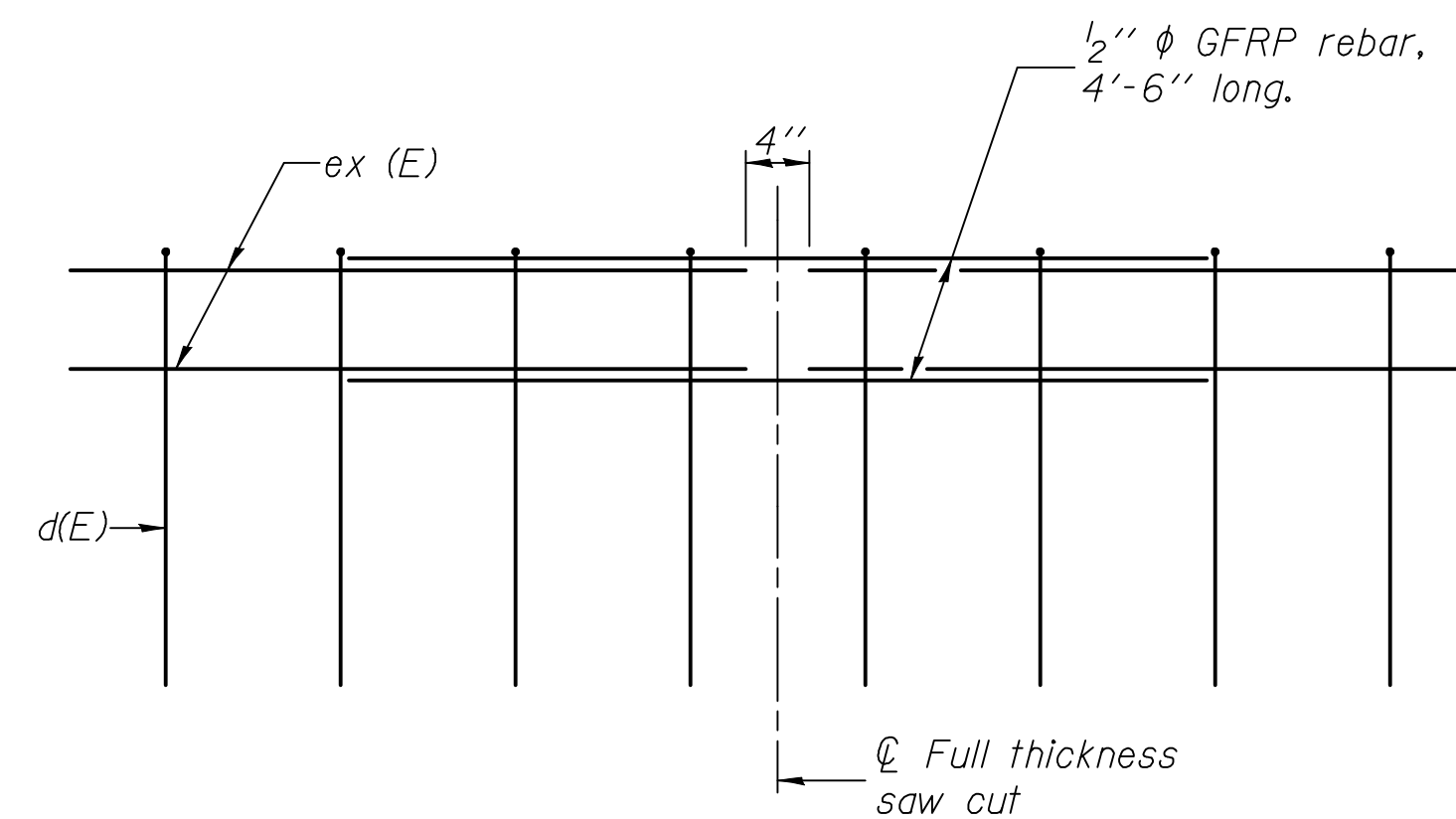
**ALTERNATE BAR d(E)**

(For 34" parapet when conduit is present)



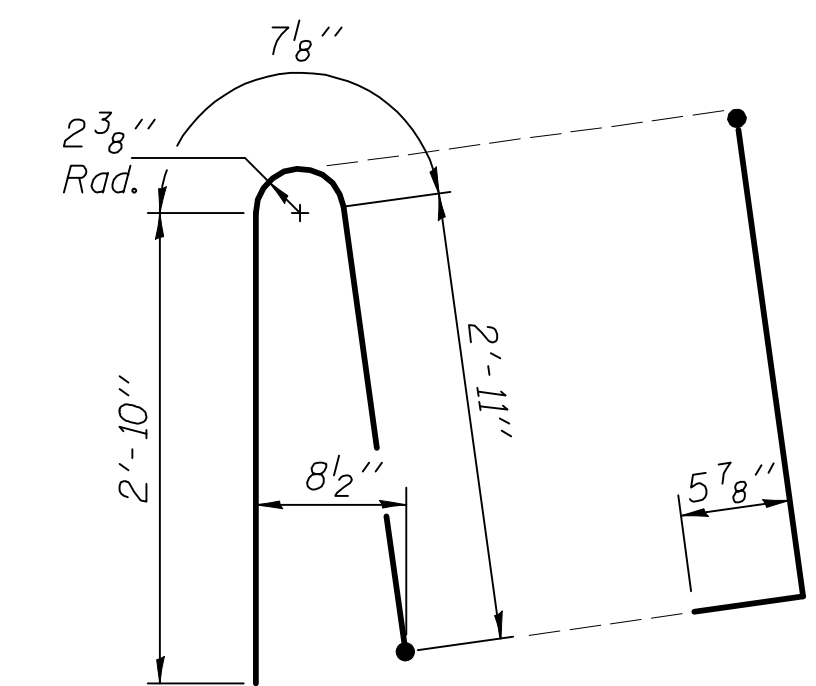
**42" F SHAPE PARAPET SECTION**  
(Showing dimensions)

\*See Superstructure Details.



**GFRP REBAR STIFFENING DETAIL**

(Place as shown in parapet section at each parapet joint location.)



**ALTERNATE BAR d(E)**

(For 42" parapet when conduit is present)

DESIGNED	B.G.H.
CHECKED	L.D.G.
DRAWN	K.H.L.
CHECKED	B.G.H.

SFP 34-42

8-16-12

**CONCRETE PARAPET SLIPFORMING OPTION**

SHEET NO. 18A	F.A.P. RTE.	SECTION	COUNTY	TOTAL SHEETS	SHEET NO.
	793	40BR-1	MADISON	72	50A
20 SHEETS	S.N. 060-0341		CONTRACT NO. 76A36		
FED. ROAD DIST. NO. _ ILLINOIS FED. AID PROJECT					