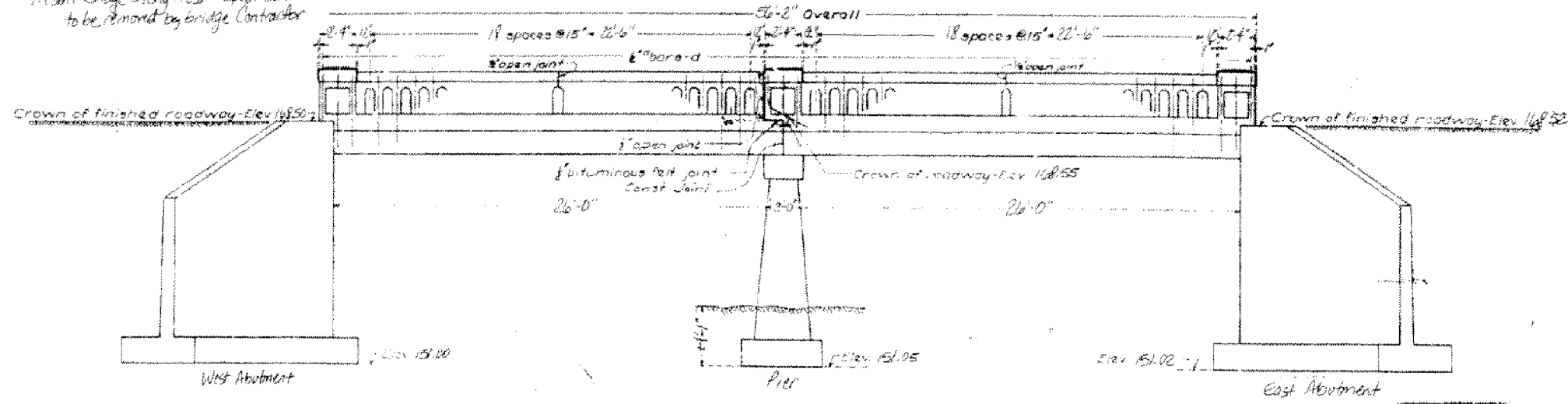


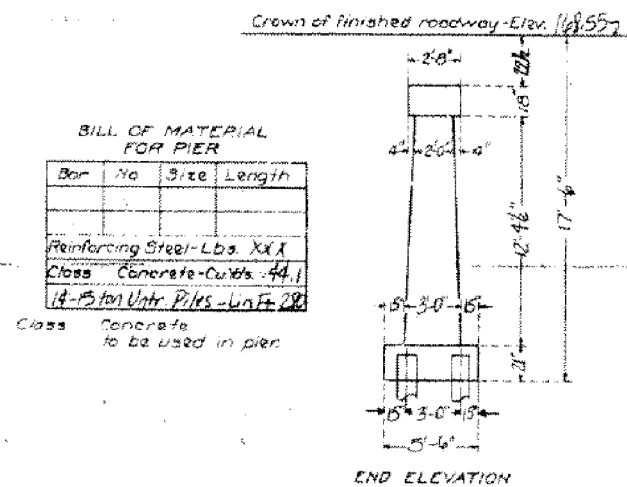
BM #8 - South West Corner East Abutment
 Right of Station 56740 - Elev 164.45
 Present Bridge - Box Truss - Span 30ft
 to be removed by bridge contractor

STATE OF ILLINOIS
 DEPARTMENT OF PUBLIC WORKS & BUILDINGS
 DIVISION OF HIGHWAYS

Proj. No.	County	Sec.	Total Sheets	Sheet No.	Sheet No.
11	Madison	40	37	37	37



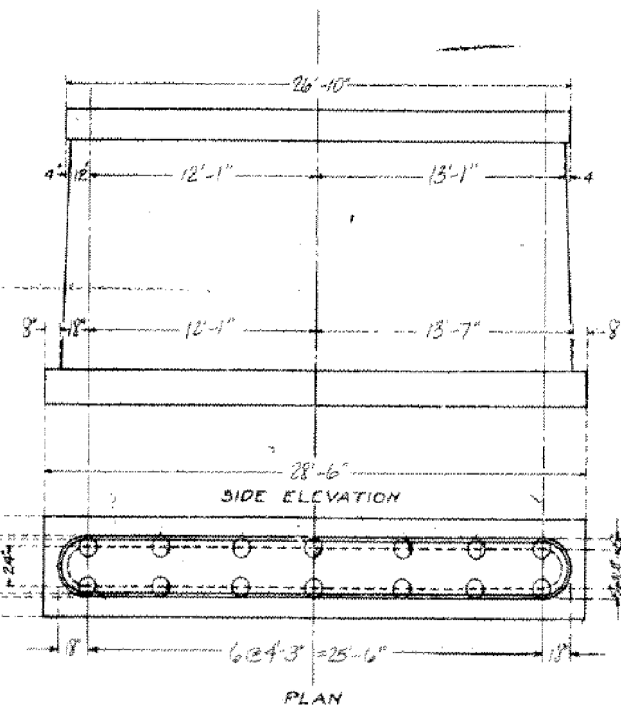
GENERAL ELEVATION



BILL OF MATERIAL FOR PIER

Bar	No	Size	Length
Reinforcing Steel - Lbs. XXX			
Class Concrete - Cu Yds. 44.1			
14-15 Ton Untr. Piles - Lin Ft. 280			
Class Concrete to be used in pier			

END ELEVATION



PLAN

SUMMARY BILL OF MATERIAL

Item	Superstructure	Abutments	Pier	Total
Class A Concrete - Cu Yds.	75.2	108.9		184.7
Class B Concrete - Cu Yds.			44.1	44.1
Class X Concrete - Cu Yds.	8.3			8.3
Reinforcing Steel - Lbs.	16440	9760		26200
Untr. Piles - 10 Ton - Lin Ft.		680		680
Untr. Piles - 12 Ton - Lin Ft.				
Untr. Piles - 15 Ton - Lin Ft.		400	280	680
Name Plate	1			1

COMPUTED	—	Aug 25 '25
CHECKED	—	G. F. Bunch
DRAWN	—	
CHECKED	—	
ASSEMBLED	—	
CHECKED	—	

EXAMINED
 PASSED
 APPROVED
 CHIEF HIGHWAY ENGINEER

13-ton - Untraced Piles - 14 required
 12" butt - 10" tip

STATION 56745
 STRIP BARS 15# - ROUTE 11
 SECTION 40 - MADISON COUNTY

1198

FOR INFORMATION ONLY