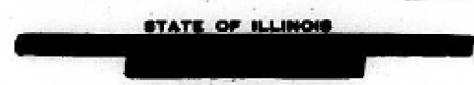


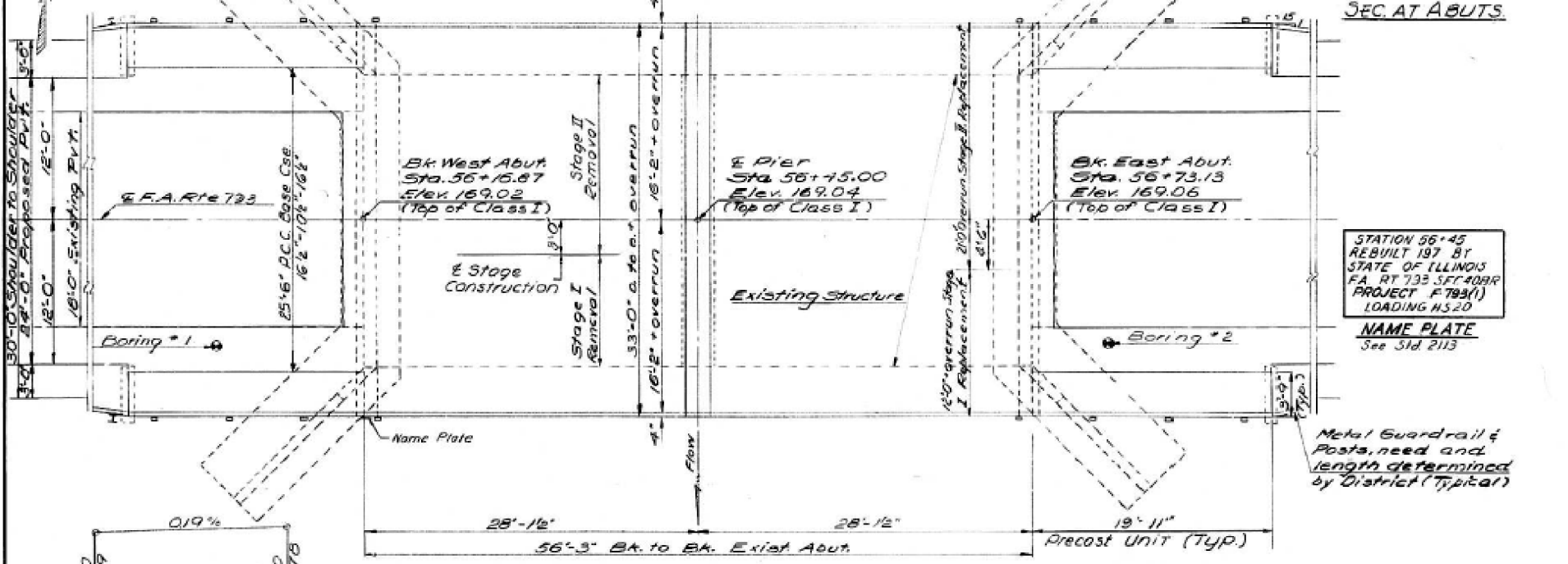
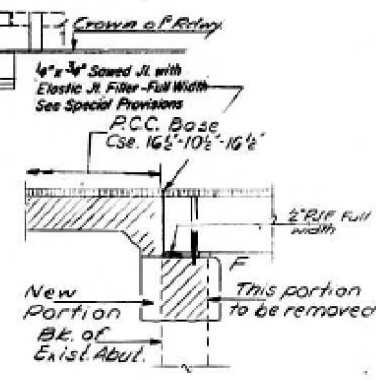
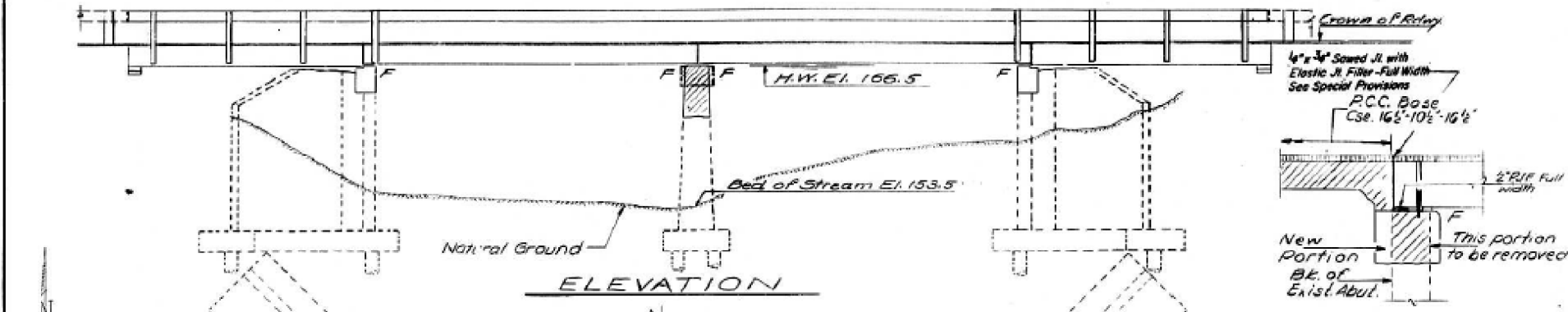
B.M.: 'X' in south east wing wall 14' right sta. 56+73 Elev. = 166.50.  
 Existing Structure @ Sta. 56+45 Built in 1926 as S.B.I. Rte. 11  
 Sec. 40. Existing superstructure to be removed utilizing stage  
 construction so as to maintain traffic over the bridge at all  
 times. Existing Pier and Abutments to be Rebuilt as  
 required and widened.



PROJECT NO.	SECTION	COUNTY	SHEET NO.	SHEETS
149	40BR	MADISON	11	5

**GENERAL NOTES**

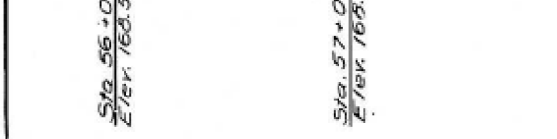
All reinforcement bars shall be lapped 24 diameters unless otherwise shown.  
 It shall be the responsibility of the contractor to verify all dimensions and conditions existing in the field prior to construction and ordering materials.  
 Limits of Waterproofing Membrane System shall be back to back of abutments.  
 Expansion bolts shall consist of self-drilling expansion anchors and 2" hooked bolts. Hooked bolts shall extend a minimum of 12" into new concrete unless otherwise shown.  
 Shoulder transition to wing wall shall be shaped with broken concrete. Cost incidental.  
 The top surface of the beams shall be finished in accordance with Article 525D6 of the Standard Specifications except that the surface shall not be roughened by brooming. The finished surface shall be free of depressions or high spots with sharp corners.  
 Existing rebars in approach slab shall be cleaned and reused.



STATION 56+45  
 REBUILT 197 BY  
 STATE OF ILLINOIS  
 F.A. RTE. 793 S.F. 40BR  
 PROJECT # 793(1)  
 LOADING HS20  
**NAME PLATE**  
 See Sld. 2113

**BILL OF MATERIAL**

Item	Unit	Super	Sub	Total
Concrete Removal	Cu. Yds.		18	18
Expansion Bolts (3/4")	Each		64	64
Class X Concrete	Cu. Yds.	16		275
P. C. Concr. Deck Bms. (12")	Sq. Ft.	1851		1851
Precast Concrete Bridge Slab	Sq. Ft.	299		299
Steel Railings, Type 5	Lin. Ft.		192	192
Reinforcement Bars	Lbs.		3290	3290
P.C. Mortar Facing Course	Lin. Ft.	561		561
Removal of Exst. Superstr.	Each		1	1
Waterproofing Membrane System	Sq. Yds.	206		206
Bit. Concrete Surf. Class I	Tons	30		30
Temporary Guardrail	Lin. Ft.	56		56
Name Plate	Each			1



**WATERWAY INFORMATION**

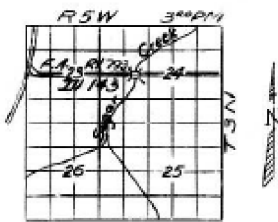
Drainage Area 6332 Acres  
 Character  
 Required Opening (50 yr flood) 17.9 Sq. Ft.  
 Present Opening 53.5 Sq. Ft.  
 Ordinary Water Elev. 156.9  
 H.W. Elev. 166.5  
 Q(50) = 3424 cfs

**FIELD UNITS PRECAST UNITS**

fc = 3000 p.s.i. fc = 4500 p.s.i.  
 fci = 4000 p.s.i. fc = 1800 p.s.i.  
 fs = 270,000 p.s.i. (7/8" Strands) fs = 200,000 p.s.i. (Struct.)  
 fsi = 189,000 p.s.i. (7/8" Strands) fs = 20,000 p.s.i.  
 n = 10 n = 8

Loading: HS20-44

Allow 25% for additional future W. S.



LOCATION SKETCH

**GENERAL PLAN & ELEVATION**

F.A. RTE. 793 OVER SUGAR CREEK  
 F.A. RTE. 793 SECTION 11 40BR  
 MADISON COUNTY  
 STATION 56+45

DESIGNED: [Signature]  
 CHECKED: F. Mercado  
 DRAWN: F. Mercado  
 EXAMINED: [Signature]  
 PASSED: [Signature]  
 DATE: April 27 1971

Rev. 12-6-71 W. H. Rev. NYL/AB 2-21-75

FOR INFORMATION ONLY