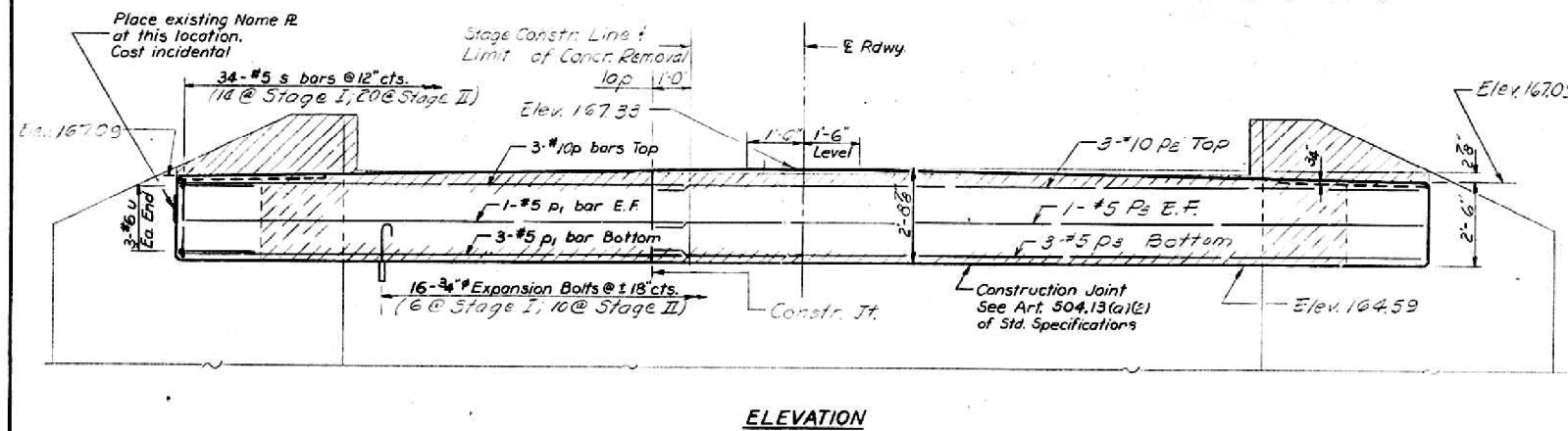
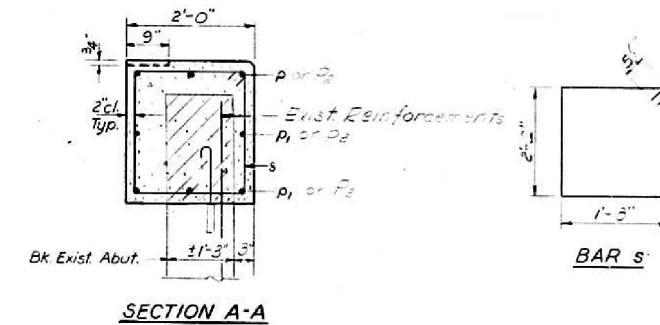


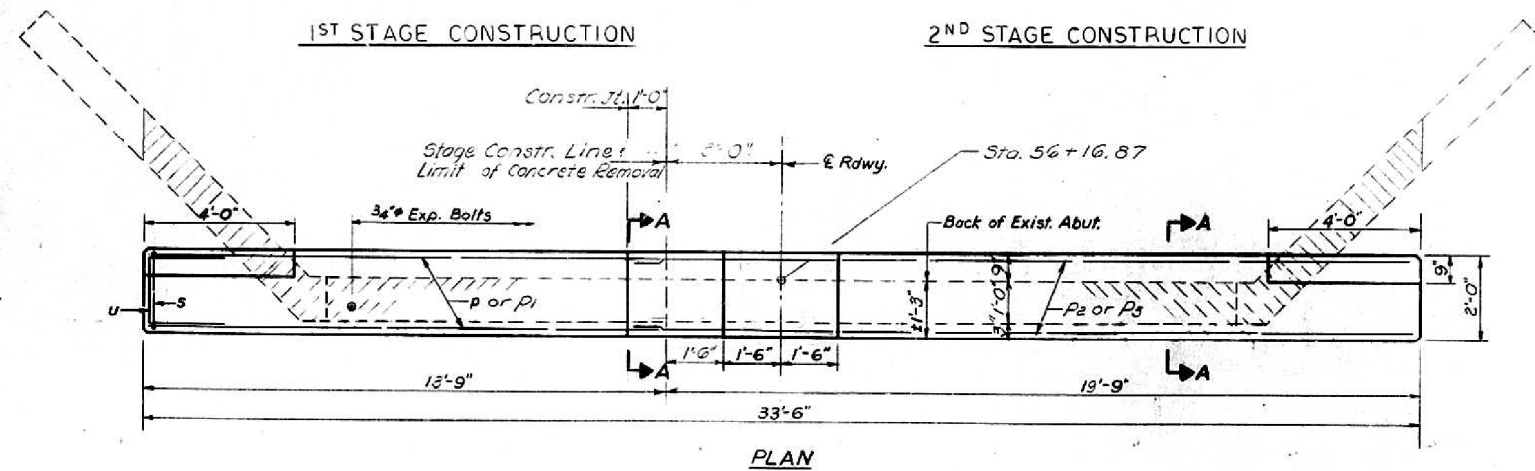
ROUTE NO.	SECTION	COUNTY	TOTAL SHEETS	SHEET NO.	SHEET NO.
189	40BR	MADISON	11	9	7 SHEETS
FED. ROAD DIST. NO. 7	SECTION	FED. AID PROJECT			



ELEVATION



SECTION A-A



PLAN

WEST ABUTMENT
BILL OF MATERIAL

Bar	No.	Size	Length	Shape
p	3	#10	32'-3"	—
p1	2	#5	37'-0"	—
p2	5	#5	20'-6"	—
s	3	#5	20'-0"	—
u	2	#6	5'-7"	□
Class X Concrete			Cu. Yds.	7.7
Reinforcement Bars			Lbs	270
Expansion Bolts #3/4"			Each	2
Concrete Removal			Cu Yds	4.5

DESIGNED: *John L. Armstrong*
 CHECKED: *F. Mercado*
 DRAWN: *J.L. Armstrong*
 EXAMINED: *April 27 1971*
 PASSED: *Richard J. Holterman*

NOTE
 Hatched area indicates Concrete Removal. Reinforcement extending into removed area shall be cleaned and incorporated into the new construction.
 Expansion bolts shall be anchored in sound concrete.
 All edges shall have standard 3/4" chamfers except as noted.

QUANTITIES INCLUDE 1 CU. YD. CLASS "X" CONCRETE TO REPAIR WING WALLS AS NECESSARY AND AS DIRECTED BY THE ENGINEER.

WEST ABUTMENT
 F.A. RT. 793 SEC. 40 BR
 MADISON COUNTY
 STA. 56+45.00

FOR INFORMATION ONLY