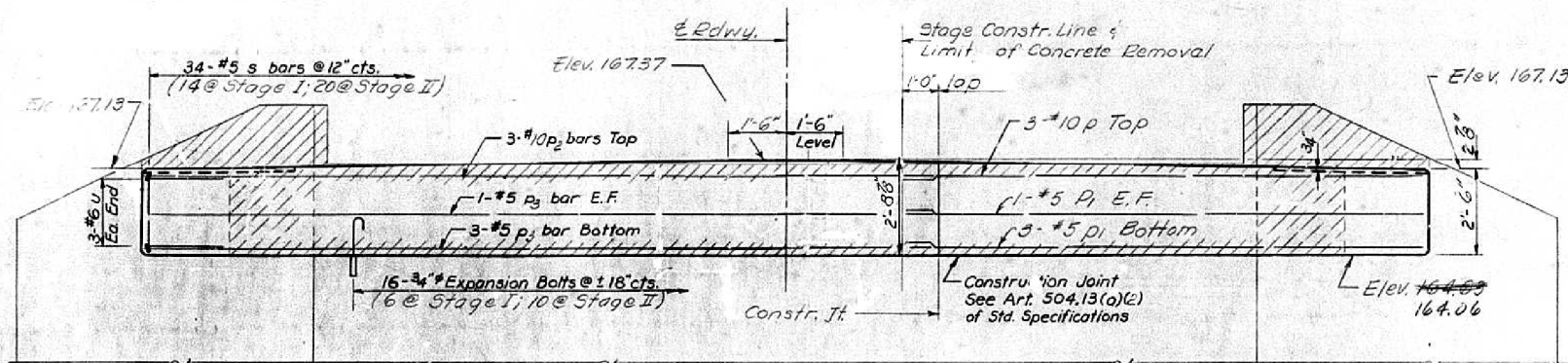
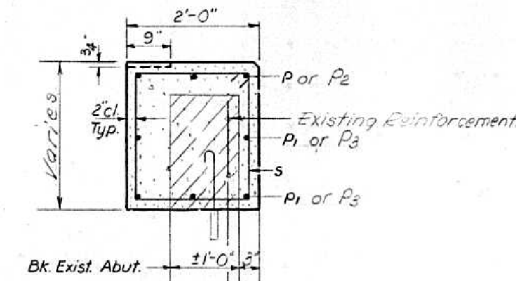


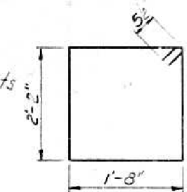
ROUTE NO.	SECTION	COUNTY	TOTAL SHEETS	SHEET NO.
159	40BR	MADISON	11	10
SHEET NO. 7 SHEETS				



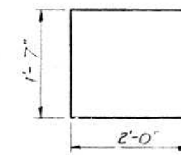
ELEVATION



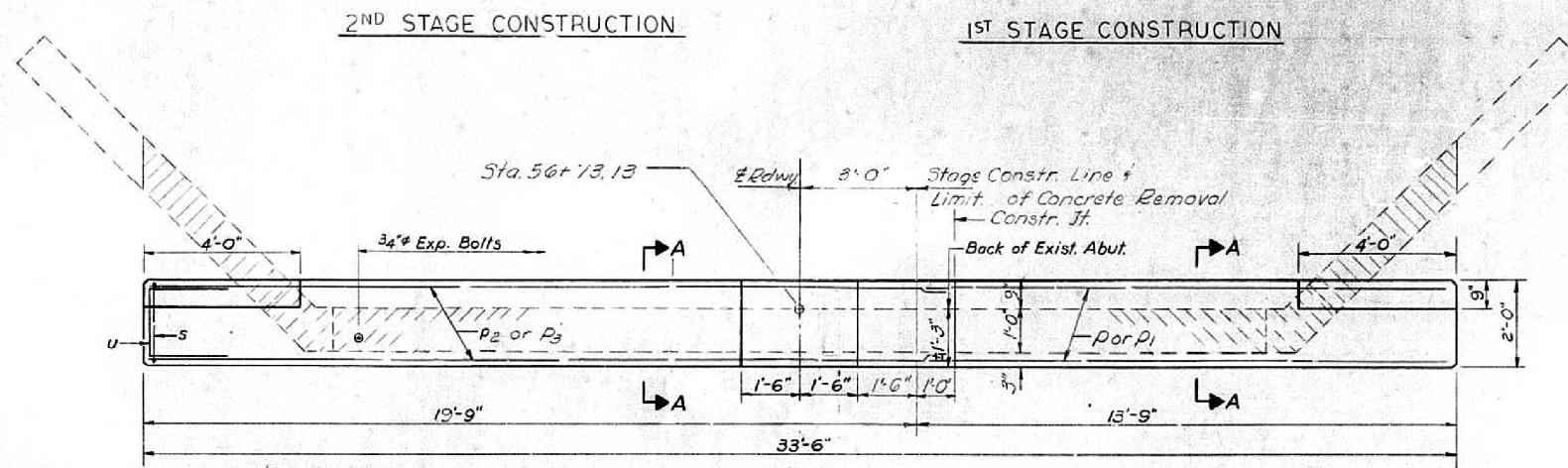
SECTION A-A



BAR s



BAR u



PLAN

EAST ABUT
BILL OF MATERIAL

Bar	No.	Size	Length	Shape
p	3	#4	13'-0"	—
p1	5	#5	13'-0"	—
p2	3	#10	22'-6"	—
p3	5	#5	22'-6"	—
s	34	#5	8'-7"	□
u	6	#5	5'-0"	□
Class X Concrete			Cu.Yds.	7.7
Reinforcement Bars			Lbs	370
Expansion Bolts 3/4"			Each	16
Concrete Removal			Cu.Yds.	4.5

DESIGNED: *Arvo Uimonen* APRIL 27 1971
 CHECKED: *F. Mercado*
 DRAWN: *J.L. Armstrong*
 EXAMINED: *Richard H. Holterman*
 PASSED: *H.G. Baumann*

NOTE
 Hatched area indicates Concrete Removal. Reinforcement extending into removed area shall be cleaned and incorporated into the new construction.
 Expansion bolts shall be anchored in sound concrete.
 All edges shall have standard 3/4" chamfers except as noted.

QUANTITIES INCLUDE 1 CU. YD. CLASS "X" CONCRETE TO REPAIR WING WALLS AS NECESSARY AND AS DIRECTED BY THE ENGINEER.

EAST ABUTMENT
 F.A. RT. 793 SEC. 40 P.R.
 MADISON COUNTY
 STA. 56+45.00

FOR INFORMATION ONLY