

F.A.P. RTE.	SECTION	COUNTY	TOTAL SHEETS	SHEET NO.
322	ET, 8) RS-2	WASHINGTON	15	1
		ILLINOIS	CONTRACT NO. 76E91	

\* 15 + 2 = 17

STATE OF ILLINOIS  
DEPARTMENT OF TRANSPORTATION

DIVISION OF HIGHWAYS

**PROPOSED  
HIGHWAY PLANS**

FAP ROUTE 322 (U.S. 51)  
SECTION (7, 8)RS-2  
HMA OVERLAY  
WASHINGTON COUNTY

C-98-052-11  
PROJECT ACF-0322(097)



FUNCTIONAL CLASSIFICATION:	MINOR ARTERIAL
2009 ADT:	1800
2009 ADTT:	195
MU%:	7.1%
SU%:	4.3%

STATE OF ILLINOIS  
DEPARTMENT OF TRANSPORTATION  
DIVISION OF HIGHWAYS

SUBMITTED December 13 20 12

John D. Baranzolli PE/IC  
DEPUTY DIRECTOR OF HIGHWAYS, REGION ENGINEER

April 26 20 13  
John D. Baranzolli PE/IC  
ENGINEER OF DESIGN AND ENVIRONMENT

April 26 20 13  
Omer Osman PE/IC  
DIRECTOR OF HIGHWAYS, CHIEF ENGINEER

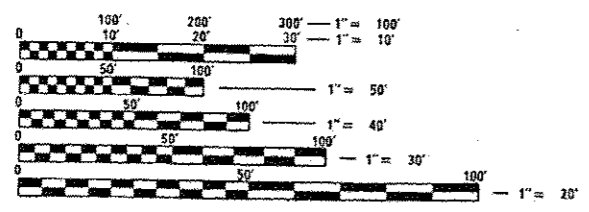
**PRINTED BY THE AUTHORITY  
OF THE STATE OF ILLINOIS**

**INDEX OF SHEETS**

1. COVER SHEET
2. GENERAL NOTES
- 3.-3B. SUMMARY OF QUANTITIES
- 4-5. TYPICAL SECTIONS
- 6-8. SCHEDULE OF QUANTITIES
9. PLAN SHEET
- 10-13. DETAILS
- 14-15. SURVEY MONUMENTS

**HIGHWAY STANDARDS**

- |           |   |
|-----------|---|
| 000001-06 | STANDARD SYMBOLS, ABBREVIATIONS AND PATTERNS                                  |
| 406201-01 | MAILBOX TURNOUT   |
| 442201-03 | CLASS C & D PATCHES   |
| 482011-03 | HMA SHLD. STRIPS/SHLDS. WITH RESURFACING OR WIDENING AND RESURFACING PROJECTS |
| 601001-04 | SUB-SURFACE DRAINS  |
| 601101-01 | CONCRETE HEADWALL FOR PIPE DRAIN  |
| 606001-05 | CONCRETE CURB TYPE B & COMBINATION CURB & CUTTER                              |
| 606301-04 | PC CONCRETE ISLANDS AND MEDIANS   |
| 667101-02 | PERMANENT SURVEY MARKERS  |
| 701001-02 | OFF-RD OPERATIONS, 2L, 2W, MORE THAN 15' AWAY                                 |
| 701006-04 | OFF-RD OPERATIONS, 2L, 2W, 15' TO 24" FROM PAV. EDGE                          |
| 701011-03 | OFF-RD MOVING OPERATIONS, 2L, 2W, DAY ONLY                                    |
| 701201-04 | LANE CLOSURE, 2L, 2W, DAY ONLY, FOR SPEEDS ≥ 45 MPH                           |
| 701206-03 | LANE CLOSURE, 2L, 2W, NIGHT ONLY FOR SPEEDS ≥ 45 MPH                          |
| 701301-04 | LANE CLOSURE, 2L, 2W, SHORT TIME OPERATIONS                                   |
| 701306-03 | LANE CLOSURE, 2L, 2W, SLOW MOVING OPERATIONS, DAY ONLY, FOR SPEEDS ≥ 45 MPH   |
| 701311-03 | LANE CLOSURE, 2L, 2W MOVING OPERATIONS, DAY ONLY                              |
| 701326-04 | LANE CLOSURE, 2L, 2W, PAVEMENT WIDENING, FOR SPEEDS ≥ 45 MPH                  |
| 701336-06 | LANE CLOSURE, 2L, 2W, WORK AREAS IN SERIES, FOR SPEEDS ≥ 45 MPH               |
| 701901-02 | TRAFFIC CONTROL DEVICES   |
| 704001-07 | TEMPORARY CONCRETE BARRIER  |
| 720001-01 | SIGN PANEL MOUNTING DETAILS   |
| 720006-03 | SIGN PANEL ERECTION DETAILS   |
| 780001-03 | TYPICAL PAVEMENT MARKINGS   |
| 781001-03 | TYPICAL APPLICATIONS RAISED REFLECTIVE PAVEMENT MARKERS                       |
| 782001    | PRISMATIC CURB REFLECTORS   |



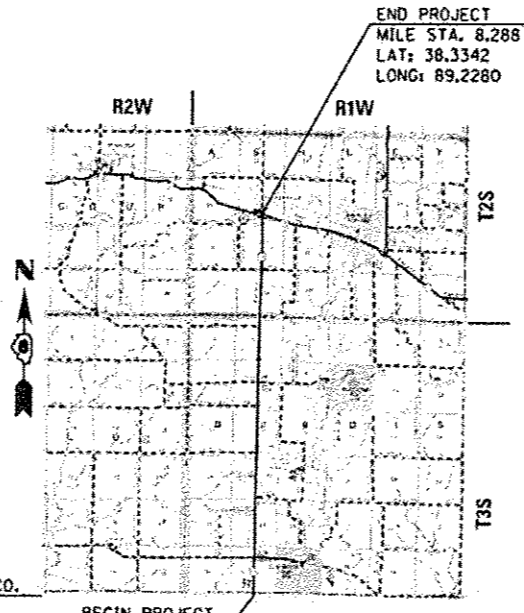
FULL SIZE PLANS HAVE BEEN PREPARED USING STANDARD ENGINEERING SCALES. REDUCED SIZED PLANS WILL NOT CONFORM TO STANDARD SCALES. IN MAKING MEASUREMENTS ON REDUCED PLANS, THE ABOVE SCALES MAY BE USED.

J.U.L.I.E.  
JOINT UTILITY LOCATION INFORMATION FOR EXCAVATION  
1-800-892-0123  
OR 811

PROJECT ENGINEER:  
TIM PADGETT, (618) 346-3325

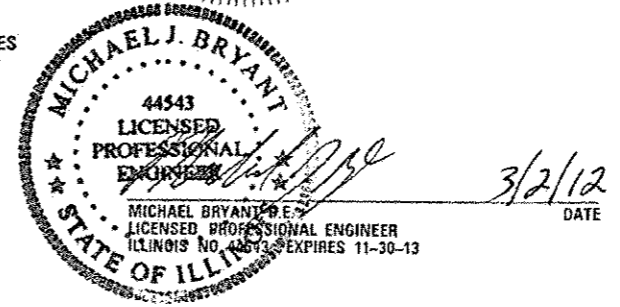
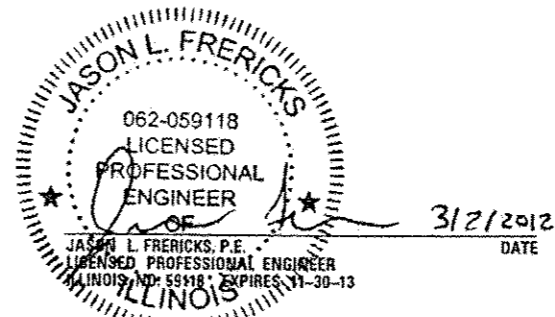
PROJECT MANAGER:  
AARON KARLAS (618) 346-3208

CONTRACT NO. 76E91



LOCATION MAP  
1" = 2 MILES

GROSS LENGTH = 43,761 FT. = 8.288 MILES  
NET LENGTH = 43,761 FT. = 8.288 MILES



I:\Bentley\81\Print\PrintOrganizer\LDOT\LDOT\_printer\_bur.plt:fig 3/2/2012 9:28:37 AM \\chprint\CHHP6101 X:\CH\LE\2011\11004-01\CAD\Plans\B676E91-ah-cover.dgn