

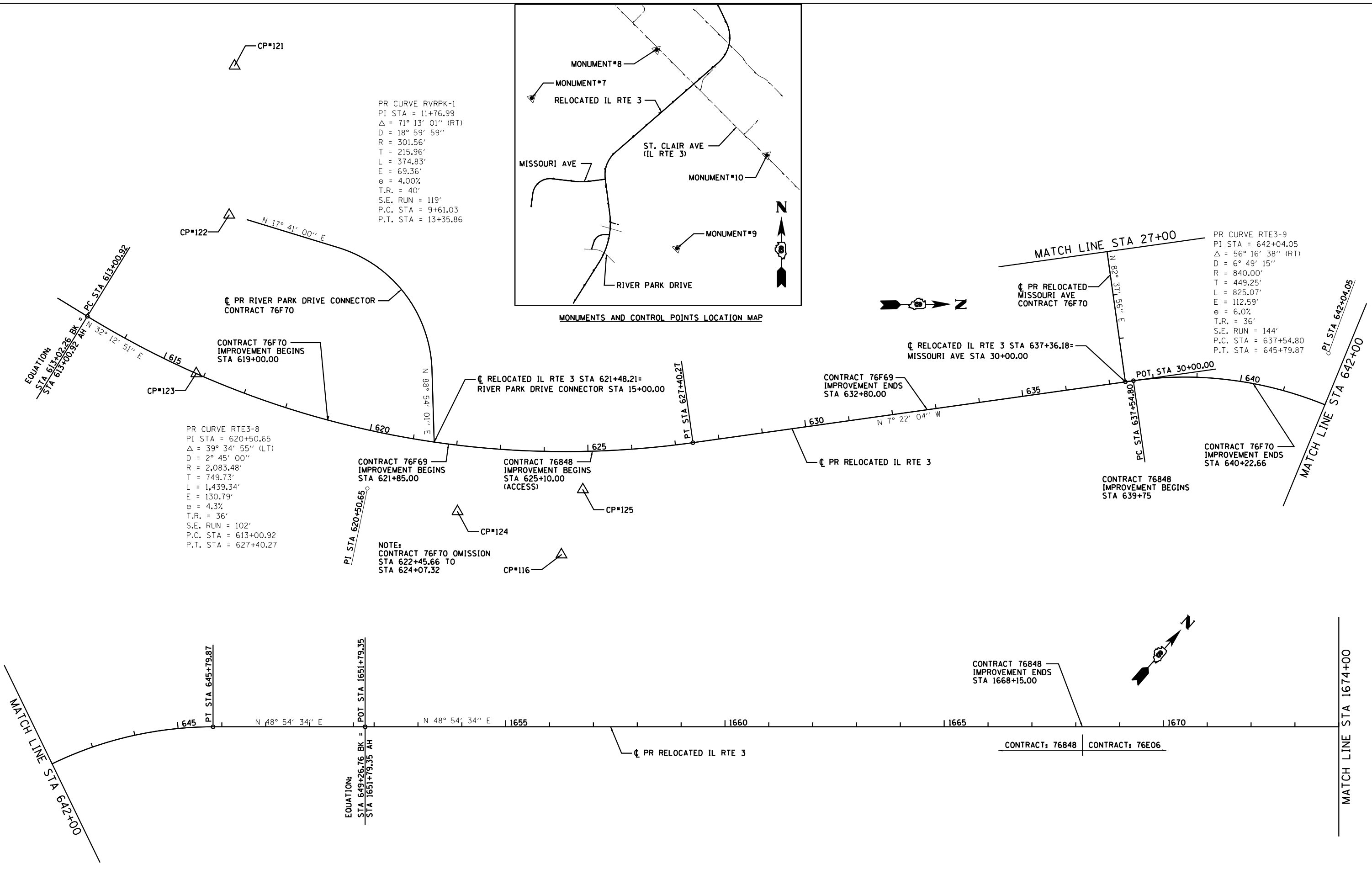
MONUMENTS AND CONTROL POINTS LOCATION MAP

PR CURVE RVRPK-1
 PI STA = 11+76.99
 $\Delta = 71^\circ 13' 01''$ (RT)
 $D = 18^\circ 59' 59''$
 $R = 301.56'$
 $T = 215.96'$
 $L = 374.83'$
 $E = 69.36'$
 $e = 4.00\%$
 $T.R. = 40'$
 $S.E. RUN = 119'$
 $P.C. STA = 9+61.03$
 $P.T. STA = 13+35.86$

PR CURVE RTE3-9
 PI STA = 642+04.05
 $\Delta = 56^\circ 16' 38''$ (RT)
 $D = 6^\circ 49' 15''$
 $R = 840.00'$
 $T = 449.25'$
 $L = 825.07'$
 $E = 112.59'$
 $e = 6.0\%$
 $T.R. = 36'$
 $S.E. RUN = 144'$
 $P.C. STA = 637+54.80$
 $P.T. STA = 645+79.87$

PR CURVE RTE3-8
 PI STA = 620+50.65
 $\Delta = 39^\circ 34' 55''$ (LT)
 $D = 2^\circ 45' 00''$
 $R = 2,083.48'$
 $T = 749.73'$
 $L = 1,439.34'$
 $E = 130.79'$
 $e = 4.3\%$
 $T.R. = 36'$
 $S.E. RUN = 102'$
 $P.C. STA = 613+00.92$
 $P.T. STA = 627+40.27$

NOTE:
 CONTRACT 76F70 OMISSION
 STA 622+45.66 TO
 STA 624+07.32



USER NAME = dmeyer	DESIGNED - JJO	REVISED -
DRAWN - JJO	REVISED -	
CHECKED - PJM	REVISED -	
DATE - 10/18/12	REVISED -	

PLLOT SCALE = 200.0000' / in.
PLLOT DATE = 10/17/2012

STATE OF ILLINOIS
 DEPARTMENT OF TRANSPORTATION

ALIGNMENTS, TIES, AND BENCHMARKS

SCALE: SHEET NO. OF SHEETS STA. 613+00 TO STA. 1674+00

F.A.P. RTE.	SECTION	COUNTY	TOTAL SHEETS	SHEET NO.
788	520-1-2-1	ST. CLAIR	121	13
CONTRACT NO. 76F70				
ILLINOIS FED. AID PROJECT				