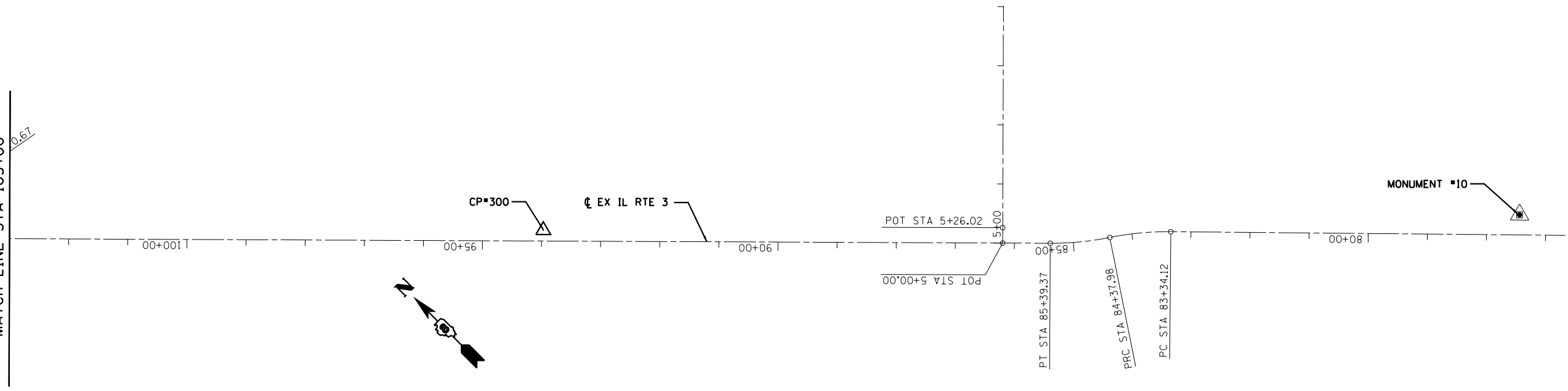


MATCH LINE STA 103+00

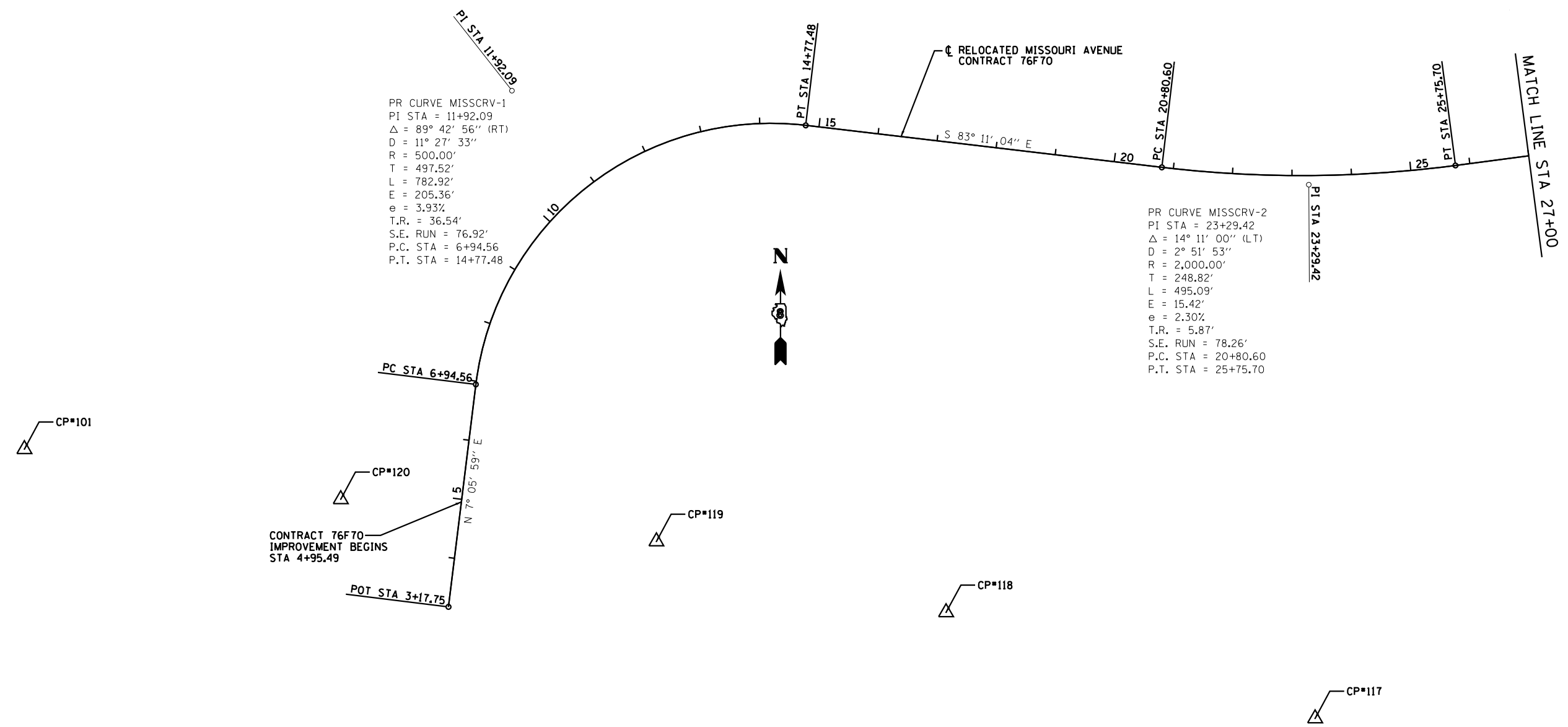


PR CURVE MISSCRV-1  
 PI STA = 11+92.09  
 $\Delta = 89^\circ 42' 56''$  (RT)  
 $D = 11^\circ 27' 33''$   
 $R = 500.00'$   
 $T = 497.52'$   
 $L = 782.92'$   
 $E = 205.36'$   
 $e = 3.93\%$   
 $T.R. = 36.54'$   
 $S.E. RUN = 76.92'$   
 $P.C. STA = 6+94.56$   
 $P.T. STA = 14+77.48$

PR CURVE MISSCRV-2  
 PI STA = 23+29.42  
 $\Delta = 14^\circ 11' 00''$  (LT)  
 $D = 2^\circ 51' 53''$   
 $R = 2,000.00'$   
 $T = 248.82'$   
 $L = 495.09'$   
 $E = 15.42'$   
 $e = 2.30\%$   
 $T.R. = 5.87'$   
 $S.E. RUN = 78.26'$   
 $P.C. STA = 20+80.60$   
 $P.T. STA = 25+75.70$

CONTRACT 76F70  
 IMPROVEMENT BEGINS  
 STA 4+95.49

RELOCATED MISSOURI AVENUE  
 CONTRACT 76F70



USER NAME = dmeyer  
 PLOT SCALE = 200.0000' / in.  
 PLOT DATE = 10/17/2012

DESIGNED - JJO  
 DRAWN - JJO  
 CHECKED - PJM  
 DATE - 10/18/12

REVISED -  
 REVISED -  
 REVISED -  
 REVISED -

STATE OF ILLINOIS  
 DEPARTMENT OF TRANSPORTATION

ALIGNMENTS, TIES, AND BENCHMARKS

SCALE: SHEET NO. OF SHEETS STA. 3+17 TO STA. 27+00

F.A.P. RTE.	SECTION	COUNTY	TOTAL SHEETS	SHEET NO.
788	520-1-2-1	ST. CLAIR	121	15
CONTRACT NO. 76F70				
ILLINOIS FED. AID PROJECT				