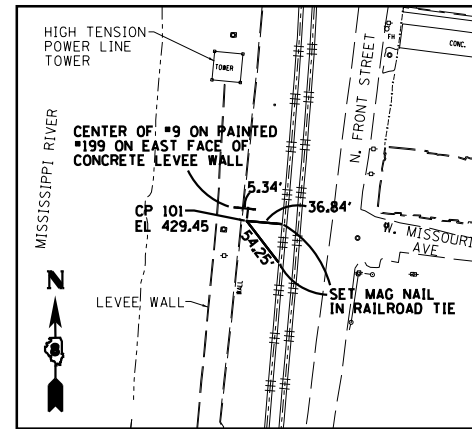


**CONTROL POINT #100**

FOUND IRON ROD WITH IDOT CAP  
FLUSH WITH GROUND

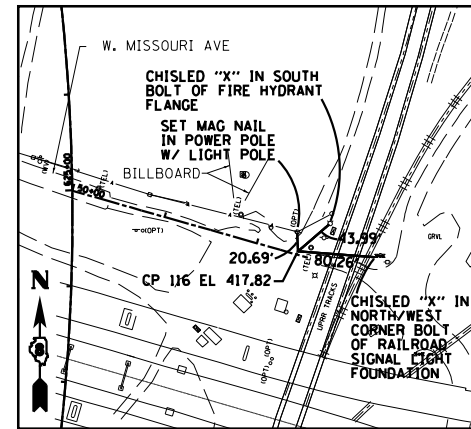
N 14045283.692  
E 2451478.950  
EL 409.23



**CONTROL POINT #101**

FOUND IRON PIN WITH IDOT CAP  
FLUSH WITH GROUND

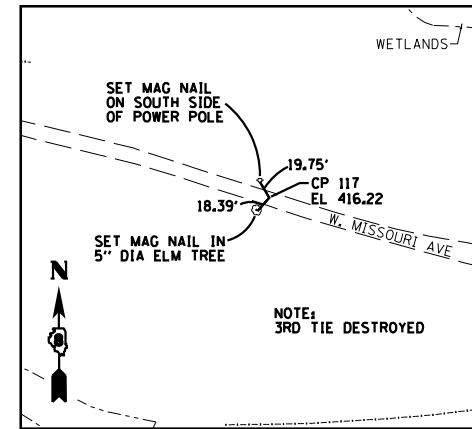
N 14041174.100  
E 2447288.901  
EL 429.45



**CONTROL POINT #116**

FOUND IRON PIN WITH IDOT CAP  
FLUSH WITH GROUND

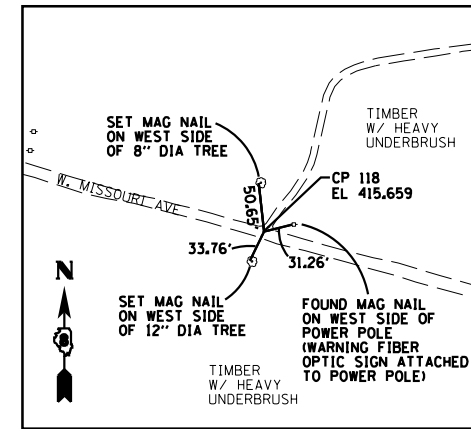
N 14040412.250  
E 2450497.479  
EL 417.82



**CONTROL POINT #117**

FOUND IRON PIN WITH IDOT CAP  
FLUSH WITH GROUND

N 14040721.310  
E 2449459.781  
EL 416.22



**CONTROL POINT #118**

FOUND IRON PIN WITH IDOT CAP  
FLUSH WITH GROUND

N 14040899.709  
E 2448839.233  
EL 415.66

**BENCHMARK #101**

EL 419.30

FOUND CUT "X" ON THE SOUTH HEX BOLT ON A HYDRANT LOCATED ON THE NORTH SIDE OF MISSOURI AVENUE, ALONG THE WEST SIDE OF THE TRIPLE AMTRAK TRACKS, JUST NORTH OF THE MLK BRIDGE, 0.6 MILES EAST OF FRONT STREET

**BENCHMARK #130**

EL 426.66

SET CHISLED "X" ON THE NORTH HEX BOLT ON A FIRE HYDRANT LOCATED ON THE SOUTH SIDE OF RIVER PARK DRIVE, AT THE INTERSECTION OF RIVER PARK DRIVE AND DIVISION STREET

**BENCHMARK #131**

EL 426.59

SET CHISLED "X" ON THE SOUTH HEX BOLT ON A FIRE HYDRANT LOCATED ON THE INTERSECTION OF RIVER PARK DRIVE AND ENTRANCE RAMP OF EADS BRIDGE WEST BOUND

**BENCHMARK #132**

EL 422.17

SET CHISLED "X" ON THE SOUTH HEX BOLT ON A FIRE HYDRANT LOCATED #225' SOUTH OF THE INTERSECTION OF RIVER PARK DRIVE AND NORTH B STREET, ON THE EAST SIDE OF NORTH B STREET

**BENCHMARK #133**

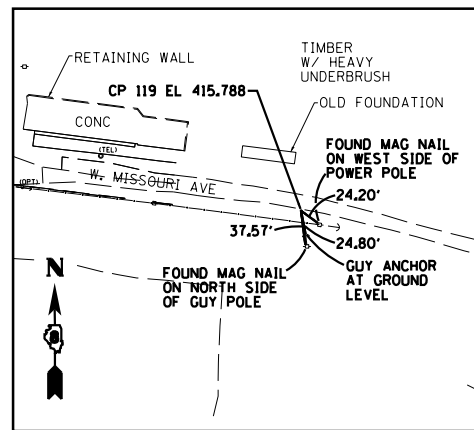
EL 418.37

SET RAILROAD SPIKE IN 2ND POWER POLE WEST OF THE INTERSECTION OF MISSOURI AVE AND NORTH B STREET ON THE SOUTH SIDE OF MISSOURI AVENUE. SET ON NORTH SIDE OF POWER POLE.

**BENCHMARK #103**

EL 419.23

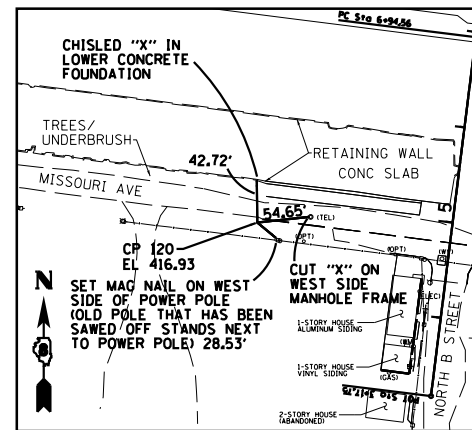
FOUND CUT "X" ON WEST RIM OF A MANHOLE AT THE INTERSECTION OF FRONT STREET AND SPARSELY TRAVELED WEST END OF MISSOURI AVENUE.



**CONTROL POINT #119**

FOUND IRON PIN WITH IDOT CAP  
FLUSH WITH GROUND

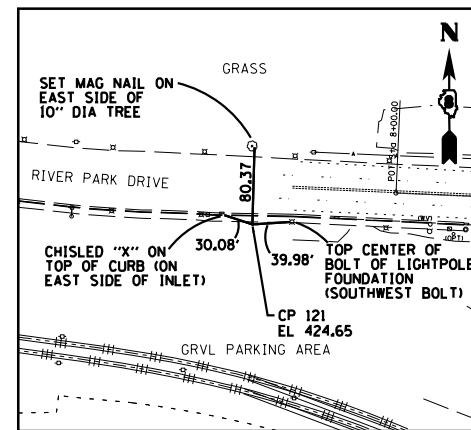
N 14041018.908  
E 2448351.921  
EL 415.79



**CONTROL POINT #120**

SET 5/8" REBAR W/ CAP  
FLUSH WITH GROUND

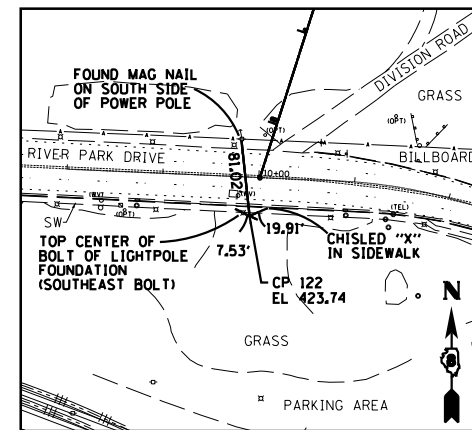
N 14041089.920  
E 2447821.011  
EL 416.93



**CONTROL POINT #121**

SET 5/8" REBAR W/ CAP  
FLUSH WITH GROUND

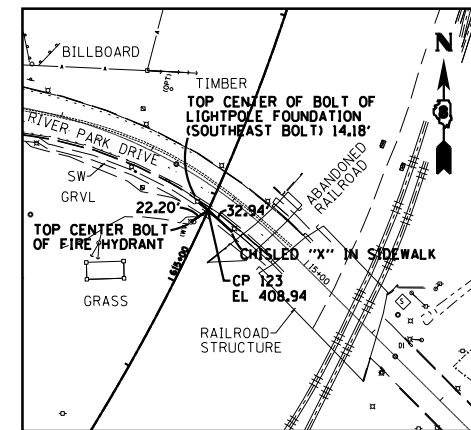
N 14039679.270  
E 2449374.533  
EL 424.65



**CONTROL POINT #122**

SET 5/8" REBAR W/ CAP  
FLUSH WITH GROUND

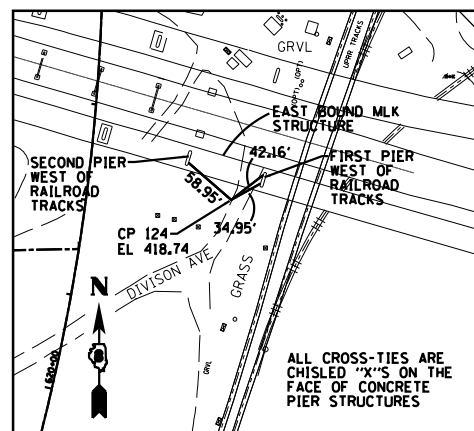
N 14039663.230  
E 2449714.358  
EL 423.74



**CONTROL POINT #123**

SET 5/8" REBAR W/ CAP  
FLUSH WITH GROUND

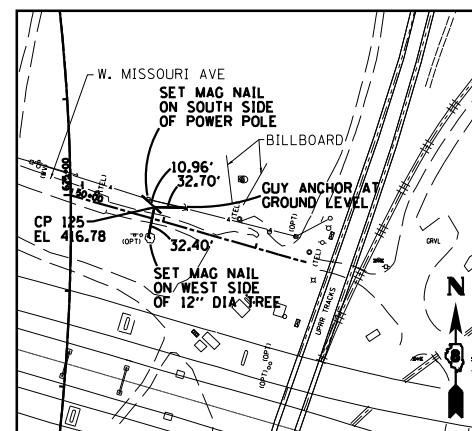
N 14039584.170  
E 2450075.058  
EL 408.94



**CONTROL POINT #124**

SET 5/8" REBAR W/ CAP  
FLUSH WITH GROUND

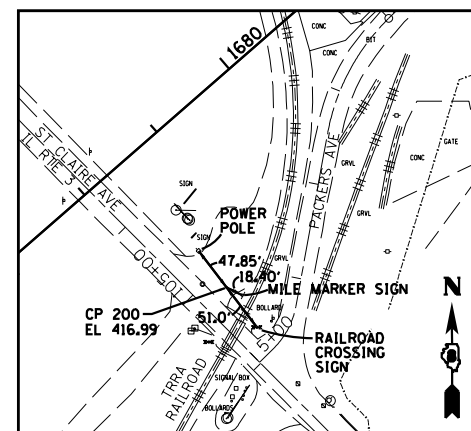
N 14040176.350  
E 2450396.257  
EL 418.74



**CONTROL POINT #125**

SET 5/8" REBAR W/ CAP  
FLUSH WITH GROUND

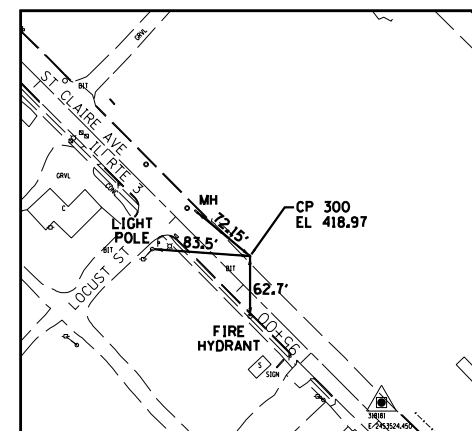
N 14040462.940  
E 2450349.614  
EL 416.78



**CONTROL POINT #200**

FOUND IRON ROD WITH IDOT CAP  
FLUSH WITH GROUND

N 14044316.431  
E 2452780.630  
EL 416.99



**CONTROL POINT #300**

FOUND IRON ROD WITH IDOT CAP  
FLUSH WITH GROUND

N 14043700.040  
E 2453387.437  
EL 418.97



USER NAME = dmeyer  
PLOT SCALE = 200.0000' / in.  
PLOT DATE = 10/17/2012

DESIGNED - JJO  
DRAWN - JJO  
CHECKED - PJM  
DATE - 10/18/12

REVISED -  
REVISED -  
REVISED -  
REVISED -

STATE OF ILLINOIS  
DEPARTMENT OF TRANSPORTATION

ALIGNMENTS, TIES, AND BENCHMARKS

SCALE: SHEET NO. OF SHEETS STA. TO STA.

F.A.P. RTE.	SECTION	COUNTY	TOTAL SHEETS	SHEET NO.
788	520-1-2-1	ST. CLAIR	121	16
CONTRACT NO. 76F70				
ILLINOIS FED. AID PROJECT				