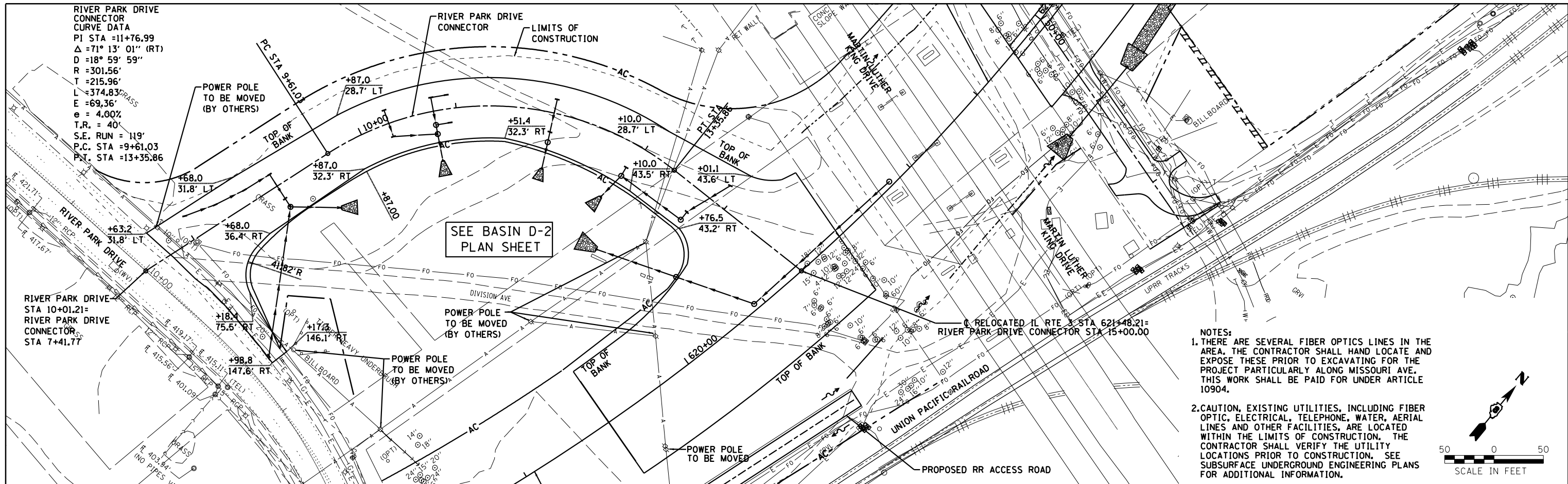
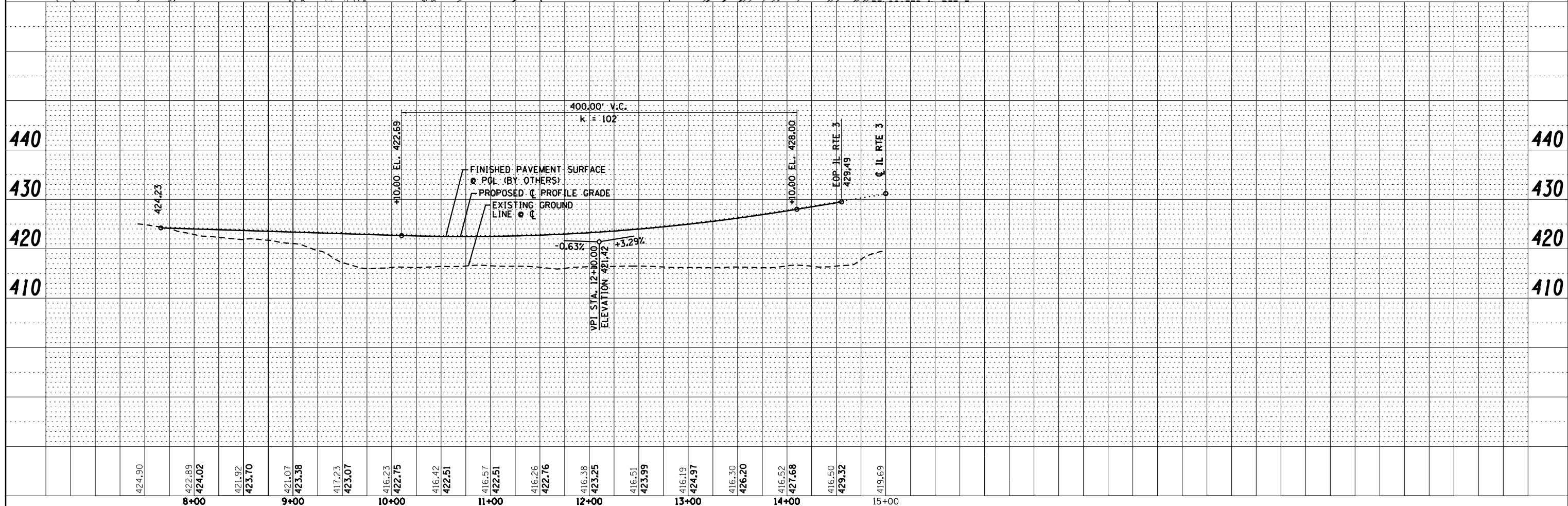
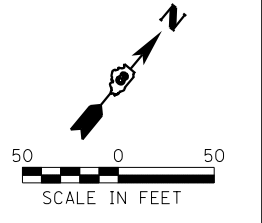


PLAN	SURVEYED	DATE
	PLOTTED	
	ALIGNED	
	CHECKED	
	FILED	
	NO.	

PROFILE	SURVEYED	DATE
	PLOTTED	
	GRADES	
	CHECKED	
	STRUCTURE	
	NOTATIONS	
	CHKD	
	NO.	



- NOTES:**
1. THERE ARE SEVERAL FIBER OPTICS LINES IN THE AREA, THE CONTRACTOR SHALL HAND LOCATE AND EXPOSE THESE PRIOR TO EXCAVATING FOR THE PROJECT PARTICULARLY ALONG MISSOURI AVE. THIS WORK SHALL BE PAID FOR UNDER ARTICLE 10904.
 2. CAUTION, EXISTING UTILITIES, INCLUDING FIBER OPTIC, ELECTRICAL, TELEPHONE, WATER, AERIAL LINES AND OTHER FACILITIES, ARE LOCATED WITHIN THE LIMITS OF CONSTRUCTION, THE CONTRACTOR SHALL VERIFY THE UTILITY LOCATIONS PRIOR TO CONSTRUCTION, SEE SUBSURFACE UNDERGROUND ENGINEERING PLANS FOR ADDITIONAL INFORMATION.



Farnsworth
 GROUP, INC.
 2705 McGraw Drive
 Bloomington, Illinois 61704
 309/663-8435, 309/663-1571 fax

USER NAME =	dmeyer	DESIGNED -	JJO	REVISED -	02/06/13
		DRAWN -	JJO	REVISED -	03/18/13
PLOT SCALE =	100.0000' / 1"	CHECKED -	PJM	REVISED -	
PLOT DATE =	3/18/2013	DATE -	10/18/12	REVISED -	

STATE OF ILLINOIS
DEPARTMENT OF TRANSPORTATION

RIVER PARK DRIVE CONNECTOR				
PLAN & PROFILE				
SCALE:	SHEET NO.	OF SHEETS	STA.	TO STA.

F.A.P. RTE.	SECTION	COUNTY	TOTAL SHEETS	SHEET NO.
788	520-1-2-1	ST. CLAIR	121	19
CONTRACT NO. 76F70				
ILLINOIS FED. AID PROJECT				