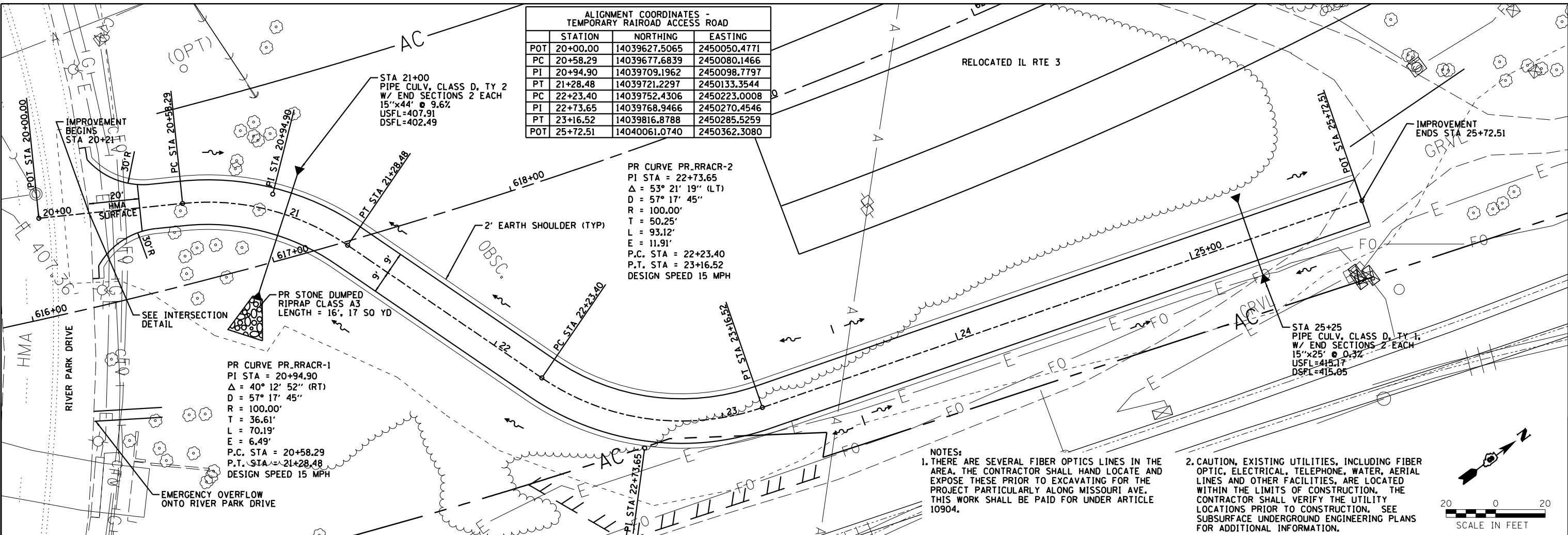


PLAN	SURVEYED	DATE
	PLOTTED	
	ALIGNED	
	CHECKED	
	DESIGNED	
	BY	
	NO.	

PROFILE	SURVEYED	DATE
	PLOTTED	
	GRADES	
	CHECKED	
	STRUCTURE	
	NOTATIONS	
	BY	
	NO.	

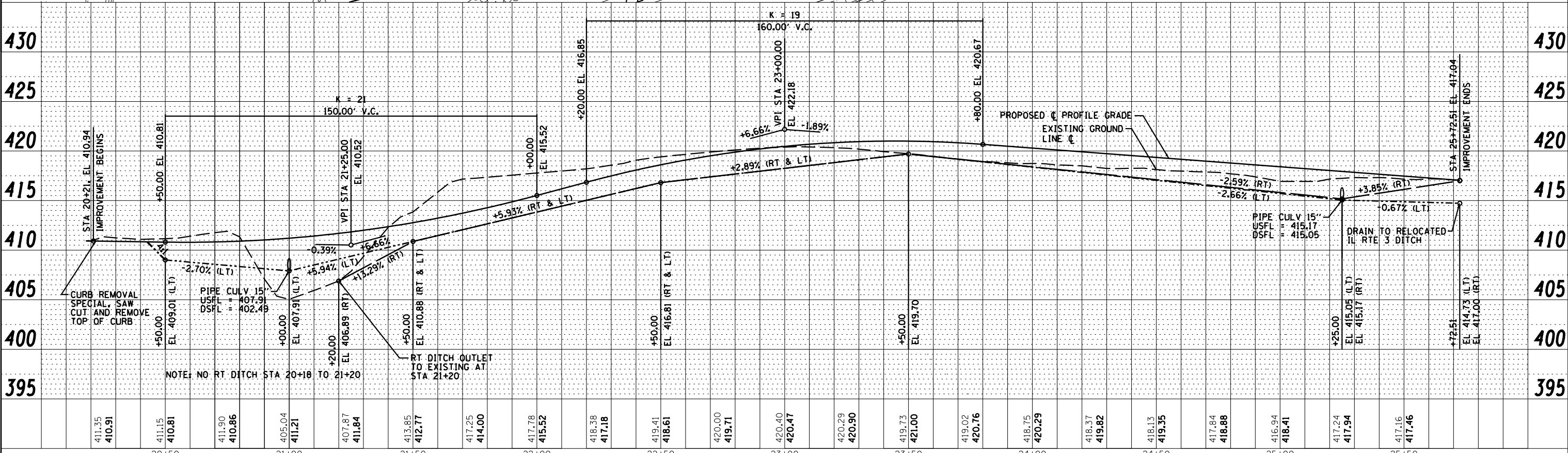
ALIGNMENT COORDINATES - TEMPORARY RAIROAD ACCESS ROAD			
STATION	NORTHING	EASTING	
POT	20+00.00	14039627.5065	2450050.4771
PC	20+58.29	14039677.6839	2450080.1466
PI	20+94.90	14039709.1962	2450098.7797
PT	21+28.48	14039721.2297	2450133.3544
PC	22+23.40	14039752.4306	2450223.0008
PI	22+73.65	14039768.9466	2450270.4546
PT	23+16.52	14039816.8788	2450285.5259
POT	25+72.51	14040061.0740	2450362.3080



PR CURVE PR_RRACR-1
 PI STA = 20+94.90
 $\Delta = 40^\circ 12' 52''$ (RT)
 $D = 57^\circ 17' 45''$
 $R = 100.00'$
 $T = 36.61'$
 $L = 70.19'$
 $E = 6.49'$
 P.C. STA = 20+58.29
 P.T. STA = 21+28.48
 DESIGN SPEED 15 MPH

PR CURVE PR_RRACR-2
 PI STA = 22+73.65
 $\Delta = 53^\circ 21' 19''$ (LT)
 $D = 57^\circ 17' 45''$
 $R = 100.00'$
 $T = 50.25'$
 $L = 93.12'$
 $E = 11.91'$
 P.C. STA = 22+23.40
 P.T. STA = 23+16.52
 DESIGN SPEED 15 MPH

NOTES:
 1. THERE ARE SEVERAL FIBER OPTICS LINES IN THE AREA. THE CONTRACTOR SHALL HAND LOCATE AND EXPOSE THESE PRIOR TO EXCAVATING FOR THE PROJECT PARTICULARLY ALONG MISSOURI AVE. THIS WORK SHALL BE PAID FOR UNDER ARTICLE 10904.
 2. CAUTION, EXISTING UTILITIES, INCLUDING FIBER OPTIC, ELECTRICAL, TELEPHONE, WATER, AERIAL LINES AND OTHER FACILITIES, ARE LOCATED WITHIN THE LIMITS OF CONSTRUCTION. THE CONTRACTOR SHALL VERIFY THE UTILITY LOCATIONS PRIOR TO CONSTRUCTION. SEE SUBSURFACE UNDERGROUND ENGINEERING PLANS FOR ADDITIONAL INFORMATION.



NOTE: NO RT DITCH STA 20+18 TO 21+20



USER NAME = *USER*	DESIGNED - JJO	REVISED - 02/06/13
	DRAWN - JJO	REVISED - 03/18/13
PLOT SCALE = *SCALE*	CHECKED - PJM	REVISED - 05/18/13
PLOT DATE = *DATE*	DATE - 10/18/12	REVISED -

STATE OF ILLINOIS
 DEPARTMENT OF TRANSPORTATION

TEMPORARY RAILROAD ACCESS ROAD
 PLAN & PROFILE

SCALE: SHEET NO. OF SHEETS STA. TO STA.

F.A.P. RTE.	SECTION	COUNTY	TOTAL SHEETS	SHEET NO.
788	520-1-2-1	ST. CLAIR	121	22
CONTRACT NO. 76F70				
ILLINOIS FED. AID PROJECT				