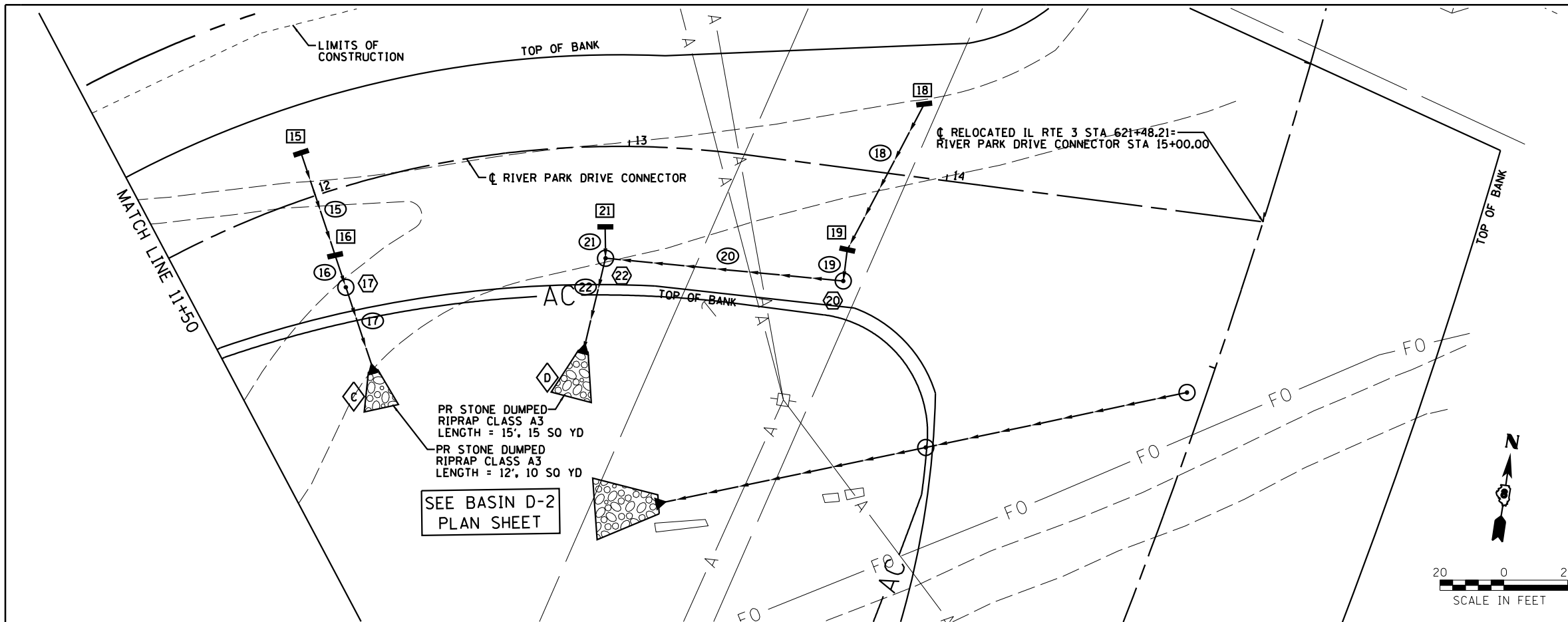
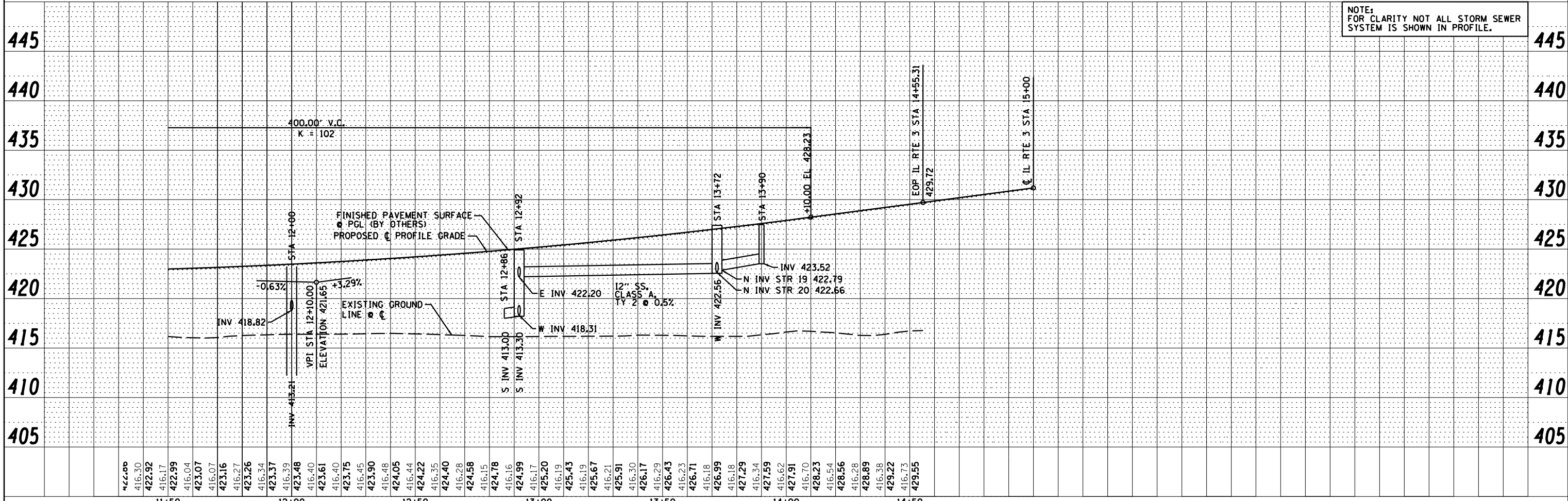


PLAN	SURVEYED	DATE
	PLOTTED	BY
	ALIGNED	
	CHECKED	
	NO. 1	
	NO. 2	
	NO. 3	
	NO. 4	
	NO. 5	
	NO. 6	
	NO. 7	
	NO. 8	
	NO. 9	
	NO. 10	



- 15 STA 12+00, 15.6' LT INLET SPECIAL (TY A) TM = 423.02 INV = 418.93
- 16 STA 12+00, 21.1' RT INLET SPECIAL (TY B) TM = 421.98 SE INV = 418.52 NW INV = 418.62
- 17 STA 12+00, 30.3' RT MH SPECIAL (4' DIA) TM EL = 422.50 N INV = 418.46 S INV = 413.21
- 18 STA 13+90, 24.4' LT INLET SPECIAL (TY A) TM = 426.60 INV = 423.52
- 19 STA 13+72, 26.8' RT INLET SPECIAL (TY B) TM = 425.91 N INV = 422.79 E INV = 422.69
- 20 STA 13+72, 35.3' RT MH SPECIAL (4' DIA) TM EL = 426.66 W INV = 422.56 N INV = 422.66
- 21 STA 12+92, 26.5' RT INLET SPECIAL (TY A) TM = 423.44 INV = 418.34
- 22 STA 12+92, 35.0' RT MH SPECIAL (4' DIA) TM EL = 423.67 S INV = 413.30 N INV = 418.31 E INV = 422.20
- 15 SS CLASS A, TY 2 12"x31' @ 1.0% TBF = 20 CU YD
- 16 SS CLASS A, TY 2 12"x6' @ 1.0% TBF = 1 CU YD
- 17 SS CLASS A, TY 3 12"x21' @ 1.0% TBF = 0 CU YD
- 18 SS CLASS A, TY 2 12"x49' @ 1.5% TBF = 19 CU YD
- 19 SS CLASS A, TY 2 12"x7' @ 0.5% TBF = 1 CU YD
- 20 SS CLASS A, TY 2 12"x71' @ 0.5% TBF = 0 CU YD
- 21 SS CLASS A, TY 2 12"x6' @ 0.5% TBF = 2 CU YD
- 22 SS CLASS A, TY 3 12"x23' @ 1.3% TBF = 0 CU YD
- C STA 12+00, 58.5' RT PRCFES 12" INV = 413.00
- D STA 12+86, 64.8' RT PRCFES 12" INV = 413.00

PROFILE	SURVEYED	DATE
	PLOTTED	BY
	GRADES CHECKED	
	STRUCTURE NOTATIONS CHECKED	
	NO. 1	
	NO. 2	
	NO. 3	
	NO. 4	
	NO. 5	
	NO. 6	
	NO. 7	
	NO. 8	
	NO. 9	
	NO. 10	



Farnsworth GROUP, INC.
2709 McGraw Drive
Bloomington, Illinois 61704
309/663-8435, 309/663-1571 fax

USER NAME = dmeyer	DESIGNED - JJO	REVISED - 02/06/13
	DRAWN - JJO	REVISED - 03/18/13
PLOT SCALE = 48.0000' / in.	CHECKED - PJM	REVISED -
PLOT DATE = 3/18/2013	DATE - 10/18/12	REVISED -

**STATE OF ILLINOIS
DEPARTMENT OF TRANSPORTATION**

**RIVER PARK DRIVE CONNECTOR
DRAINAGE PLAN & PROFILE**

SCALE: SHEET NO. OF SHEETS STA. TO STA.

F.A.P. RTE.	SECTION	COUNTY	TOTAL SHEETS	SHEET NO.
788	520-1-2-1	ST. CLAIR	121	29
CONTRACT NO. 76F70				
ILLINOIS FED. AID PROJECT				