

PART SEC. 13 & 14, T2N, R10W, OF THE 3RD PM, ST. CLAIR COUNTY, ILLINOIS

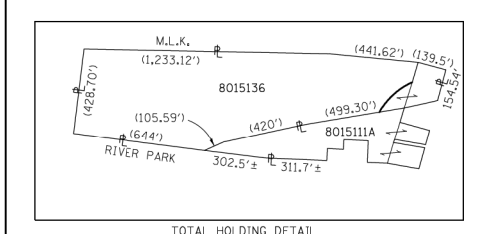
PARCEL NO.	OWNER	TOTAL HOLDING ACRES	FEE SIMPLE ACQUISITION		REMAINDER ACRES	EASEMENTS		PERMANENT TAX NUMBER	PROPERTY ACQUIRED BY
			ACRES	SQ. FT.		PE = PERMANENT ACRES	TE = TEMPORARY SQ. FT.		
8015135	TERMINAL RAILROAD ASSOCIATION OF ST. LOUIS, A MISSOURI CORP. SC-6277	2.3490	2.1775	94,853	0.1715	TE 0.0677	TE 2,949	01-13.0-512-003 01-13.0-512-005	ROAD CONSTRUCTION

STATE OF ILLINOIS)
) SS
COUNTY OF)

I, COVENTINE FIDIS, AN ILLINOIS PROFESSIONAL LAND SURVEYOR, STATE THAT I HAVE SURVEYED THE PLAT OF HIGHWAY SHOWN HEREON AND THAT THIS PROFESSIONAL SERVICE CONFORMS TO THE CURRENT ILLINOIS MINIMUM STANDARDS FOR A BOUNDARY SURVEY FOR THE PROPOSED PARCEL(S) TO BE ACQUIRED BY THE STATE OF ILLINOIS, DEPARTMENT OF TRANSPORTATION, SHOWN HEREON.

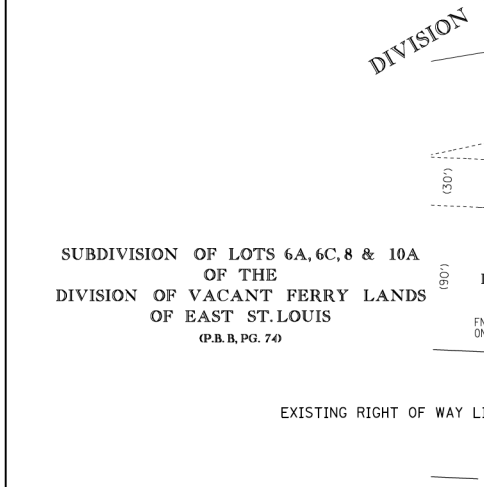
DATED _____

COVENTINE FIDIS, PLS NO. 35-2159
LICENSE EXPIRATION DATE: 11/30/2012

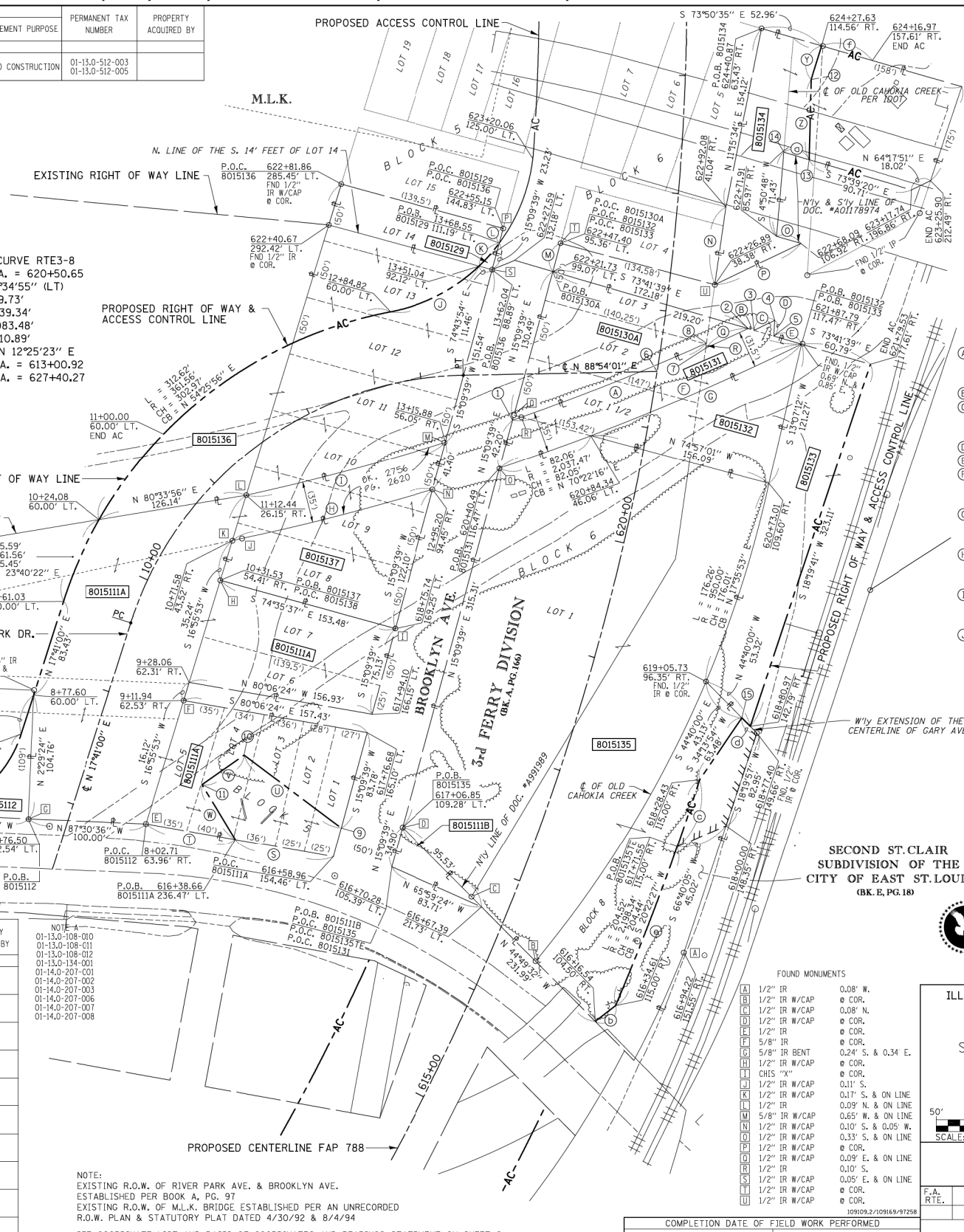


PROP. CURVE RVRPK-1
P.I. STA. = 11+76.99
Δ = 71°3'01" (RT)
T = 215.96'
L = 1,439.34'
R = 301.56'
C = 351.16'
C.B. = N 53°17'30" E
P.C. STA. = 9+61.03
P.T. STA. = 13+35.86

PROP. CURVE RTE3-8
P.I. STA. = 620+50.65
Δ = 39°34'55" (LT)
T = 749.73'
L = 1,439.34'
R = 2,083.48'
C = 1,410.89'
C.B. = N 12°25'23" E
P.C. STA. = 613+00.92
P.T. STA. = 627+40.27



PARCEL NO.	OWNER	TOTAL HOLDING ACRES	FEE SIMPLE ACQUISITION		REMAINDER ACRES	PERMANENT TAX NUMBER	PROPERTY ACQUIRED BY
			ACRES	SQ. FT.			
8015111	BI-STATE DEVELOPMENT AGENCY OF THE MISSOURI-ILLINOIS METROPOLITAN DISTRICT SC-6274	3.9774	A-1.4462 B-0.0331	A-62,997 B-1,444	2.5312	SEE NOTE A	01-13.0-108-010 01-13.0-108-011 01-13.0-108-012 01-13.0-134-001 01-14.0-207-001 01-14.0-207-002 01-14.0-207-003 01-14.0-207-006 01-14.0-207-007 01-14.0-207-008
8015112	JAMES L. ROWE SC-6265	0.4150	0.0566	2,464	0.3584	01-14.0-207-304 01-14.0-207-305	
8015129	WIGGINS FERRY COMPANY SC-6273	0.1188	0.0028	123	0.1160	01-13.0-108-907	
8015130	CONSOLIDATED RAIL CORPORATION SC-6266	0.9248	0.2617	11,399	0.0000	01-13.0-502-303	
8015131	ST. LOUIS BRIDGE COMPANY SC-6260	0.1951	0.1951	8,500	0.0000	01-13.0-512-929	
8015132	WIGGINS FERRY COMPANY SC-6280	0.2102	0.2102	9,158	0.0000	01-13.0-512-002	
8015133	CONSOLIDATED RAIL CORPORATION SUCCESSOR TO THE CLEVELAND, CINCINNATI, CHICAGO AND ST. LOUIS RAILWAY COMPANY SC-6284	0.3533	0.3533	15,390	0.0000	01-13.0-508-304	
8015134	TERMINAL RAILROAD ASSOCIATION OF ST. LOUIS, A MISSOURI CORP. SC-6257	0.4846	0.2300	10,020	0.2546		
8015136	PETROLEUM FUEL AND TERMINAL COMPANY, A MISSOURI CORP. SC-6276	15.8014	0.7208	31,398	15.0806	01-14.0-212-002	
8015137	WIGGINS FERRY COMPANY SC-6267	0.2706	0.2706	11,788	0.0000	01-13.0-108-909	



SPACE RESERVED FOR RECORDING OFFICER

BEARINGS SHOWN HEREON ARE BASED ON THE MISSISSIPPI RIVER CROSSING (MRC) COORDINATE SYSTEM WHICH IS A MODIFIED UNIVERSAL TRANSVERSE MERCATOR (UTM) SYSTEM, ZONE 15 NORTH.

- (K) L = 25.92'
R = 150.00'
CH = 25.89'
CB = N 41°26'20" E
- (L) S 15°09'39" W 12.90'
- (M) S 15°09'39" W 24.75'
- (N) N 8°08'47" E 66.48'
- (O) S 73°39'20" E 21.33'
- (P) S 64°17'51" W 80.72'
- (Q) L = 39.45'
R = 2,005.97'
CH = 39.45'
CB = S 68°19'43" W
- (R) N 8°08'49" E 4.14'
- (S) N 79°59'32" W 84.04'
- (T) N 79°59'32" W 76.75'
- (U) N 53°03'53" W 102.75'
- (V) S 54°57'56" W 43.48'
- (W) S 31°34'46" E 54.62'
- (X) R = 2,037.47'
CH = 276.33'
CB = S 67°38'12" W
- (Y) L = 194.48'
R = 2,037.47'
CH = 194.41'
CB = N 66°28'58" E
- (Z) L = 175.15'
R = 2,037.47'
CH = 175.09'
CB = S 75°59'38" W
- (AA) L = 174.75'
R = 2,002.47'
CH = 174.70'
CB = S 75°04'15" W
- (AB) L = 85.90'
R = 150.00'
CH = 84.73'
CB = N 62°47'45" E
- (AC) L = 25.92'
R = 150.00'
CH = 25.89'
CB = N 41°26'20" E
- (AD) L = 39.45'
R = 2,005.97'
CH = 39.45'
CB = S 68°19'43" W
- (AE) L = 194.48'
R = 2,037.47'
CH = 194.41'
CB = N 66°28'58" E
- (AF) L = 175.15'
R = 2,037.47'
CH = 175.09'
CB = S 75°59'38" W
- (AG) L = 174.75'
R = 2,002.47'
CH = 174.70'
CB = S 75°04'15" W
- (AH) L = 85.90'
R = 150.00'
CH = 84.73'
CB = N 62°47'45" E

- (1) 620+85.05 113.60' LT.
- (2) 621+94.49 70.97' RT.
- (3) 621+93.73 76.18' RT.
- (4) 622+03.91 92.39' RT.
- (5) 621+91.24 93.27' RT.
- (6) STA. 15+00.00 RIVER PARK = STA. 621+48.21 FAP 998
- (7) 621+73.77 37.75' RT.
- (8) 621+77.83 37.75' RT.
- (9) 616+75.63 280.46' LT.
- (10) 617+17.19 256.38' LT.
- (11) 616+86.24 157.49' LT.
- (12) 624+00.33 106.47' RT.
- (13) 623+35.80 108.24' RT.
- (14) 623+40.51 86.32' RT.
- (15) 618+85.62 133.89' RT.

AMERICAN
SURVEYING & ENGINEERING, P.C.
841 N. Galena Ave. Dixon, IL 61021
815-288-6231
ILLINOIS PROFESSIONAL DESIGN
FORM NO. 184-00392

ILLINOIS DEPARTMENT OF TRANSPORTATION
PLAT OF HIGHWAYS
FAP ROUTE 788
SECTION 520-1-2B, 520-1-2-1
ST. CLAIR COUNTY
JOB NO. R-98-015-00
STATION 1660+00 TO STATION 1680+00
SCALE: 1" = 50'
SHEET 3 OF 10
ILLINOIS DEPARTMENT OF TRANSPORTATION
DIVISION OF HIGHWAYS/REGION 5/DISTRICT 8
1102 EASTPORT PLAZA DRIVE
COLLINGSVILLE, ILLINOIS 62234-6198
F.A. R.T.E. SECTION COUNTY TOTAL SHEETS SHEET NO.
CONTRACT NO.

FAP ROUTE 788 CONSTRUCTION SECTION 520-1-2B, 520-1-2-1 ST. CLAIR COUNTY JOB # R-98-015-00 PART OF SEC. 13 & 14, T. 2 N., R. 10 W. OF THE 3RD P.M. SCALE: 1" = 50' SHEET NO. OF SHEETS STA. TO STA. ILLINOIS FED. AID PROJECT



USER NAME = *USER*	DESIGNED - JJO	REVISED -
PLOT SCALE = *SCALE*	DRAWN - JJO	REVISED -
PLOT DATE = *DATE*	CHECKED - PJM	REVISED -
	DATE - 10/18/12	REVISED -

STATE OF ILLINOIS
DEPARTMENT OF TRANSPORTATION

RIGHT OF WAY PLANS
SCALE: SHEET NO. OF SHEETS STA. TO STA.

F.A.P. R.T.E.	SECTION	COUNTY	TOTAL SHEETS	SHEET NO.
788	520-1-2-1	ST. CLAIR	121	44
CONTRACT NO. 76770				