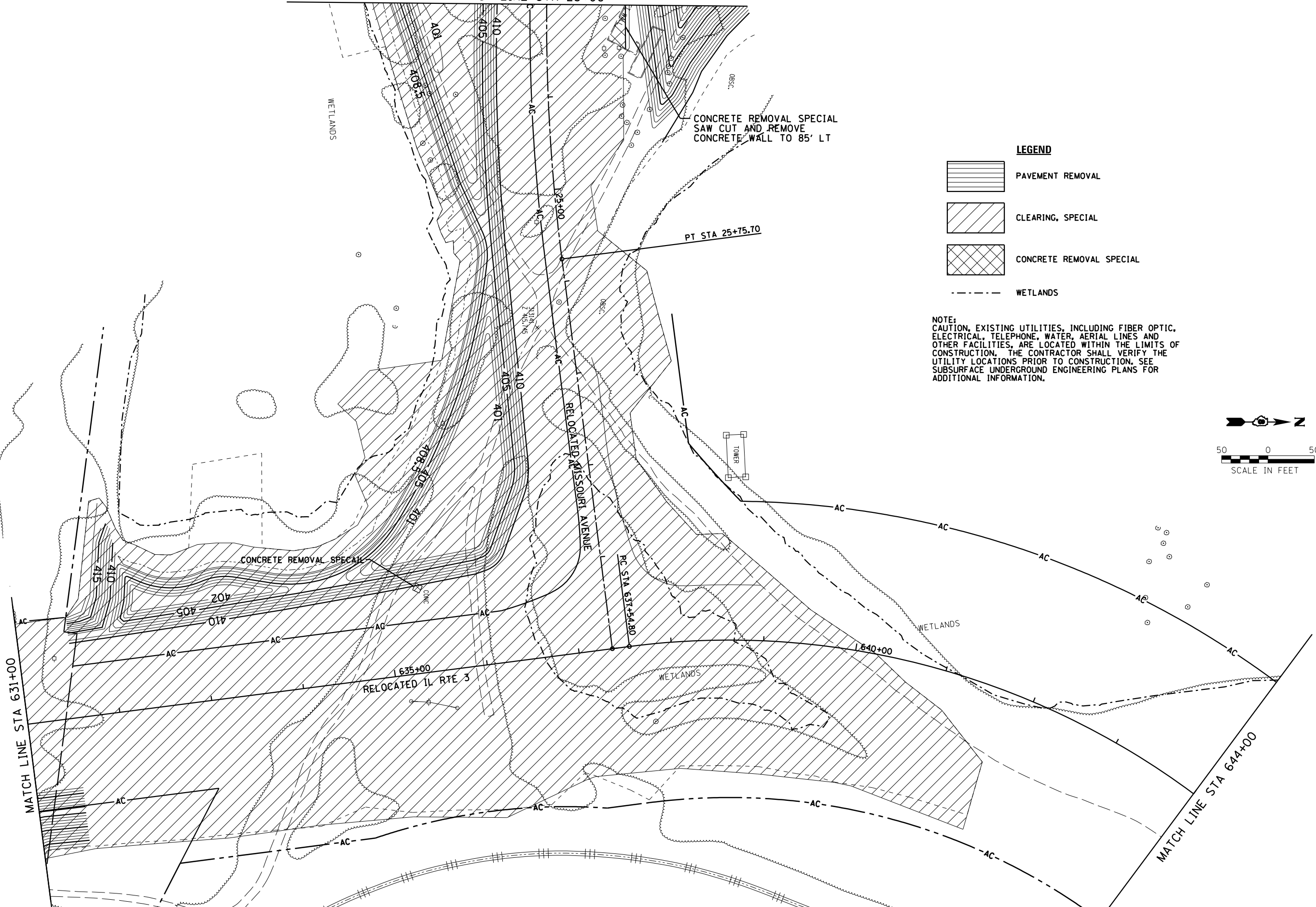
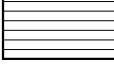


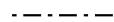
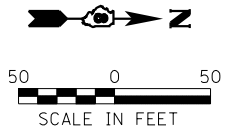


MATCH LINE STA 23+00



- LEGEND**
-  PAVEMENT REMOVAL
 -  CLEARING, SPECIAL
 -  CONCRETE REMOVAL SPECIAL
 -  WETLANDS

NOTE:
CAUTION, EXISTING UTILITIES, INCLUDING FIBER OPTIC, ELECTRICAL, TELEPHONE, WATER, AERIAL LINES AND OTHER FACILITIES, ARE LOCATED WITHIN THE LIMITS OF CONSTRUCTION. THE CONTRACTOR SHALL VERIFY THE UTILITY LOCATIONS PRIOR TO CONSTRUCTION. SEE SUBSURFACE UNDERGROUND ENGINEERING PLANS FOR ADDITIONAL INFORMATION.



USER NAME = dmeyer
PLOT SCALE = 100.0000' / 1" =
PLOT DATE = 3/18/2013

DESIGNED - JJO
DRAWN - JJO
CHECKED - PJM
DATE - 10/18/12

REVISED - 02/06/13
REVISED - 03/18/13
REVISED -
REVISED -

**STATE OF ILLINOIS
DEPARTMENT OF TRANSPORTATION**

**RELOCATED IL RTE 3 & RELOCATED MISSOURI AVENUE
REMOVAL PLAN**

SCALE: SHEET NO. OF SHEETS STA. TO STA.

F.A.P. RTE.	SECTION	COUNTY	TOTAL SHEETS	SHEET NO.
788	520-1-2-1	ST. CLAIR	121	52
CONTRACT NO. 76F70				
ILLINOIS FED. AID PROJECT				