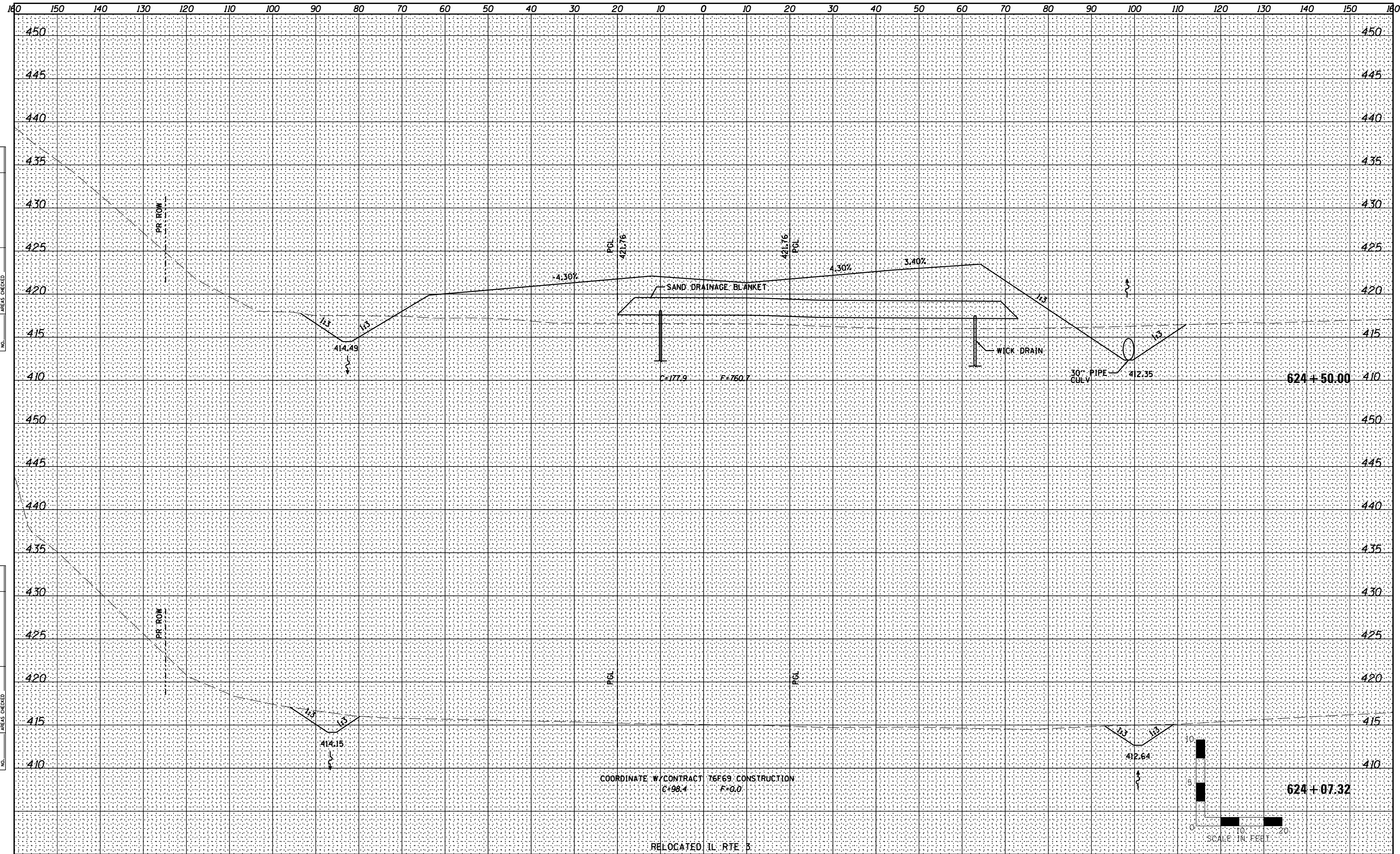


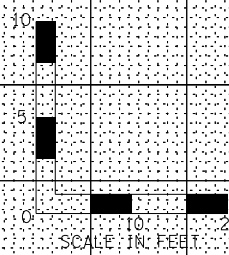
DATE	
BY	
FINAL SURVEY	SURVEYED
NOTE BOOK	PLOTTED
NO.	TEMPLATE
	AREAS CHECKED

DATE	
BY	
ORIGINAL SURVEY	SURVEYED
NOTE BOOK	PLOTTED
NO.	TEMPLATE
	AREAS CHECKED



COORDINATE W/ CONTRACT 76F69 CONSTRUCTION
 C=98.4 F=0.0

RELOCATED IL RTE 3



Farnsworth GROUP INC.
 2709 McGraw Drive
 Bloomington, Illinois 61704
 309/663-8435, 309/663-1571 fax

USER NAME = dmeyer	DESIGNED - JJO	REVISED - 02/06/13
	DRAWN - JJO	REVISED - 05/13/13
PLOT SCALE = 1/8" = 10' / in.	CHECKED - PJM	REVISED -
PLOT DATE = 5/29/2013	DATE - 10/18/12	REVISED -

STATE OF ILLINOIS
DEPARTMENT OF TRANSPORTATION

RELOCATED IL RTE 3
CROSS SECTIONS

SCALE: SHEET NO. OF SHEETS STA. 624+07.32 TO STA. 624+50.00

F.A.P. RTE.	SECTION	COUNTY	TOTAL SHEETS	SHEET NO.
788	520-1-2-1	ST. CLAIR	121	66
CONTRACT NO. 76F70				

ILLINOIS FED. AID PROJECT