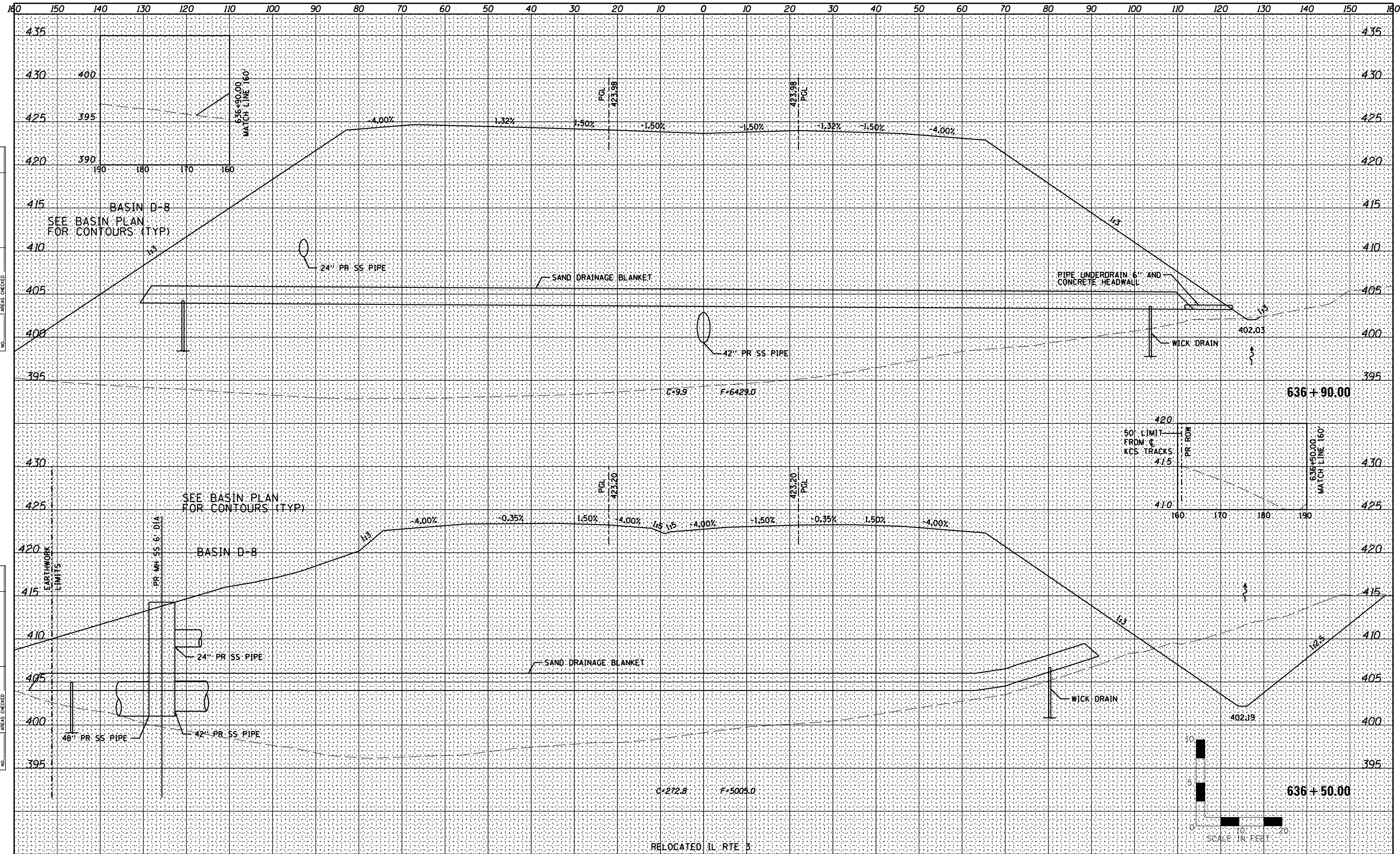


DATE	
BY	
FINAL SURVEY	
SURVEYED	
PLOTTED	
TEMPLATE	
NOTE BOOK	
AREAS CHECKED	
NO.	

DATE	
BY	
ORIGINAL SURVEY	
SURVEYED	
PLOTTED	
TEMPLATE	
NOTE BOOK	
AREAS CHECKED	
NO.	



Farnsworth
GROUP, INC.
2709 McGraw Drive
Bloomington, Illinois 61704
309/663-8435, 309/663-1571 fax

USER NAME = dmejer
DESIGNED - JJO
DRAWN - JJO
CHECKED - PJM
DATE - 10/18/12
PLOT SCALE = 1/8" = 10'-0"
PLOT DATE = 2/28/2013

REVIS - 02/06/13
REVIS - 03/18/13
REVIS -
REVIS -

STATE OF ILLINOIS
DEPARTMENT OF TRANSPORTATION

RELOCATED IL RTE 3
CROSS SECTIONS

SCALE: SHEET NO. OF SHEETS STA. 636+50.00 TO STA. 636+90.00

F.A.P. RTE.	SECTION	COUNTY	TOTAL SHEETS	SHEET NO.
788	520-1-2-1	ST. CLAIR	121	79
CONTRACT NO. 76F70				

ILLINOIS FED. AID PROJECT