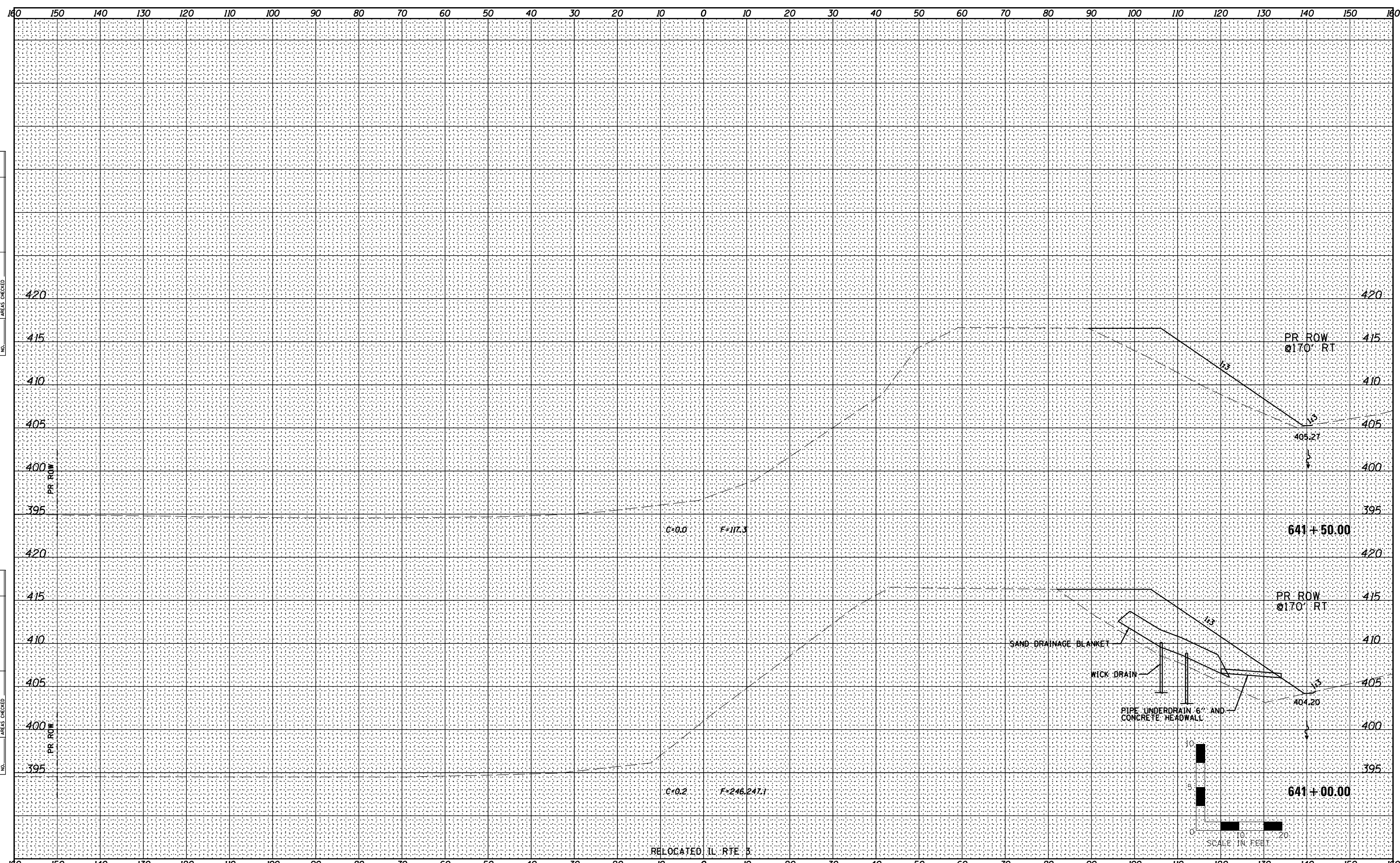


BY	DATE
SURVEYED	
PLOTTED	
TEMPLATE	
AREAS CHECKED	
FINAL SURVEY NO.	
NOTE BOOK NO.	
AREAS CHECKED	

BY	DATE
SURVEYED	
PLOTTED	
TEMPLATE	
AREAS CHECKED	
ORIGINAL SURVEY NO.	
NOTE BOOK NO.	
AREAS CHECKED	



Farnsworth GROUP, INC.
 2709 McGraw Drive
 Bloomington, Illinois 61704
 309/663-8435, 309/663-1571 fax

USER NAME =	dmeyer	DESIGNED -	JJO	REVISED -	02/06/13
		DRAWN -	JJO	REVISED -	
PLOT SCALE =	1/8" = 10' / in.	CHECKED -	PJM	REVISED -	
PLOT DATE =	2/8/2013	DATE -	10/18/12	REVISED -	

**STATE OF ILLINOIS
 DEPARTMENT OF TRANSPORTATION**

RELOCATED IL RTE 3 CROSS SECTIONS			
SCALE:	SHEET NO.	OF SHEETS	STA. 641+00.00 TO STA. 641+50.00

F.A.P. RTE.	SECTION	COUNTY	TOTAL SHEETS	SHEET NO.
788	520-1-2-1	ST. CLAIR	121	88
CONTRACT NO. 76F70				
ILLINOIS FED. AID PROJECT				