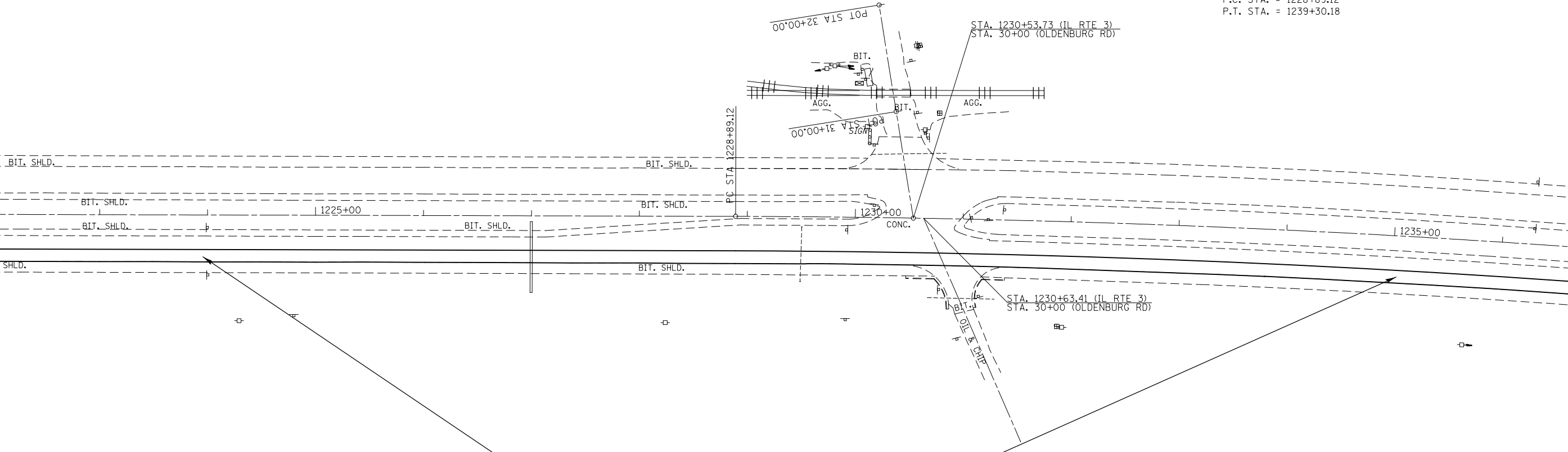




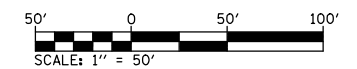
EXIST. CURVE MCL-3
 PI STA. = 1234+10.01
 Δ = 5° 12' 19" (RT)
 D = 0° 30' 00"
 R = 11,459.20'
 T = 520.89'
 L = 1,041.06'
 E = 11.83'
 E = ----
 T.R. = ----
 S.E. RUN = ----
 P.C. STA. = 1228+89.12
 P.T. STA. = 1239+30.18

MATCHLINE STA. 1222+00

MATCHLINE STA. 1237+00



PROPOSED HMA SURFACE REMOVAL, 2 1/2"
 PROPOSED HMA SURFACE COURSE, 2 1/2"



FILE NAME =	USER NAME = elyaskordio	DESIGNED -	REVISED -
et:\pw\work\p\dot\elyaskordio\d\0316383\076g06-sht-plan-2.dgn		DRAWN -	REVISED -
	PLOT SCALE = 100.0000' / in.	CHECKED -	REVISED -
MODELNAME	PLOT DATE = 4/12/2013	DATE -	REVISED -

**STATE OF ILLINOIS
 DEPARTMENT OF TRANSPORTATION**

ROADWAY PLAN SHEET

SCALE: 1"=50' SHEET 5 OF 19 SHEETS STA. 1222+00 TO STA. 1237+00

F.A. RTE.	SECTION	COUNTY	TOTAL SHEETS	SHEET NO.
2	(101, 102)RS-2, 202RS-4	MADISON	69	27
CONTRACT NO. 76G06				
ILLINOIS FED. AID PROJECT				