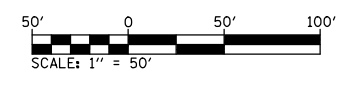
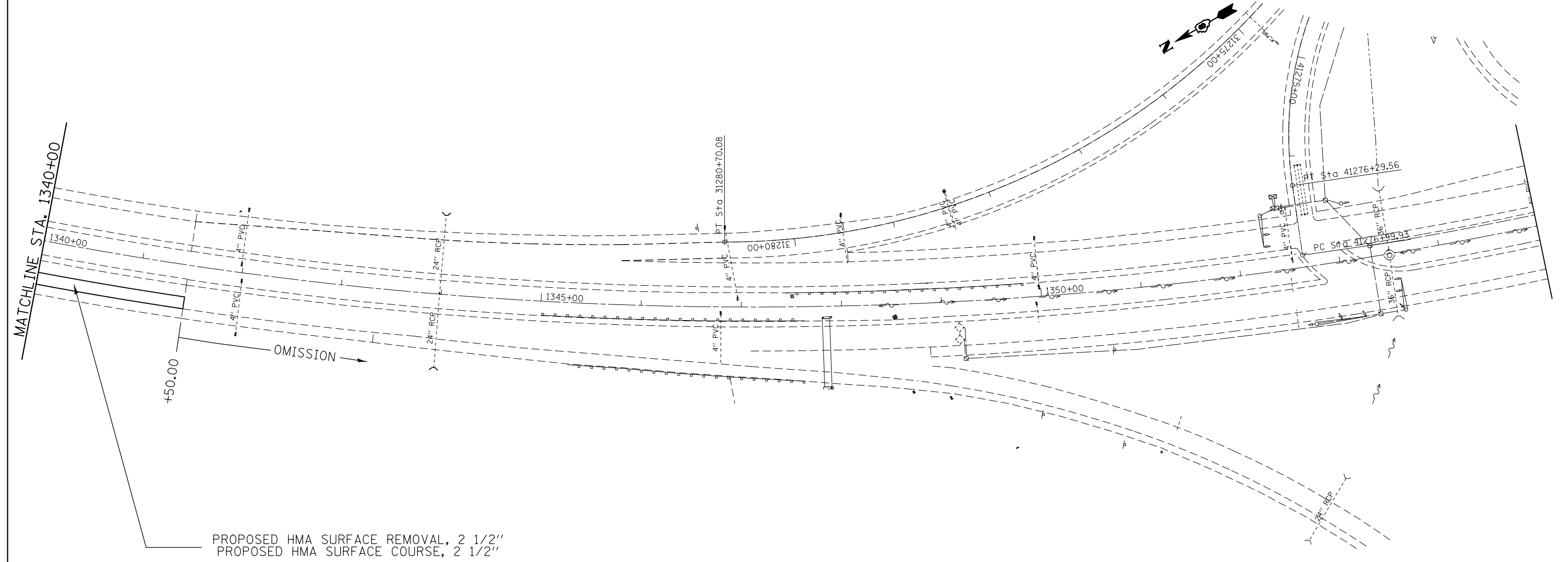


EXIST. CURVE MCL-5
 PI STA. = 1353+93.67
 $\Delta = 40^\circ 35' 46''$ (LT)
 D = 1° 30' 00"
 R = 3,819.72'
 T = 1,412.81'
 L = 2,706.41'
 E = 252.91'
 T.R. = -----
 S.E. RUN = -----
 P.C. STA. = 1339+80.86
 P.T. STA. = 1366+87.27



FILE NAME =	USER NAME = elyaskordio	DESIGNED -	REVISED -
et:\pw\work\p\dot\elyaskordio\d\0316383\0376g06-sht-plan-2.dgn		DRAWN -	REVISED -
#MODELNAME#	PLOT SCALE = 100.0000' / in.	CHECKED -	REVISED -
	PLOT DATE = 4/12/2013	DATE -	REVISED -

**STATE OF ILLINOIS
 DEPARTMENT OF TRANSPORTATION**

ROADWAY PLAN SHEET

SCALE: 1"=50' SHEET 13 OF 19 SHEETS STA. 1340+00 TO STA. 1341+50

F.A. RTE.	SECTION	COUNTY	TOTAL SHEETS	SHEET NO.
2	(101, 102)RS-2, 202RS-4	MADISON	69	35
CONTRACT NO. 76G06				
ILLINOIS FED. AID PROJECT				