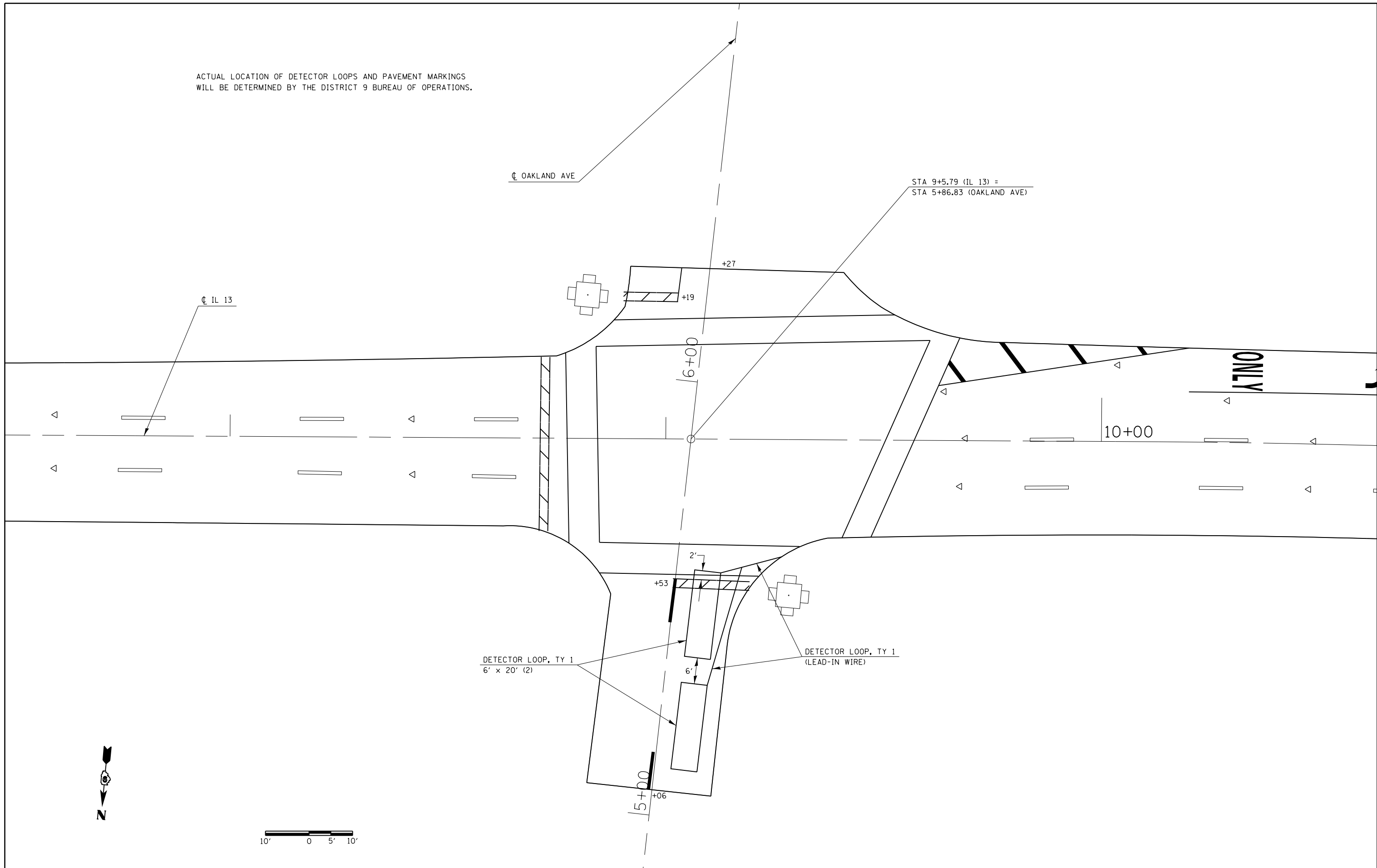


ACTUAL LOCATION OF DETECTOR LOOPS AND PAVEMENT MARKINGS  
WILL BE DETERMINED BY THE DISTRICT 9 BUREAU OF OPERATIONS.



FILE NAME =	USER NAME = \$USER\$	DESIGNED -	REVISED -
ct:\pw\work\p\dot\k\elleykd\0315140\7833	-sh-to-pln.dgn	DRAWN -	REVISED -
\$MODELNAME\$	PLOT SCALE = 20.0000' / in.	CHECKED -	REVISED -
	PLOT DATE = 1/4/2013	DATE -	REVISED -

**STATE OF ILLINOIS  
DEPARTMENT OF TRANSPORTATION**

**INTERSECTION DETAILS  
OAKLAND AVENUE**

F.A.P. RTE.	SECTION	COUNTY	TOTAL SHEETS	SHEET NO.
331	(5-2,6,12-1)RS-3	JACKSON	27	22
CONTRACT NO. 78331				
ILLINOIS FED. AID PROJECT				

SCALE: SHEET OF SHEETS STA. TO STA.