

F.A.P. RTE. 331	SECTION 15-2,6,12-1RS-3	COUNTY JACKSON	TOTAL SHEETS 27	SHEET NO. 1
		ILLINOIS	CONTRACT NO. 78331	

06-14-13 LETTING ITEM 103

STATE OF ILLINOIS  
DEPARTMENT OF TRANSPORTATION  
DIVISION OF HIGHWAYS

**PROPOSED  
HIGHWAY PLANS**

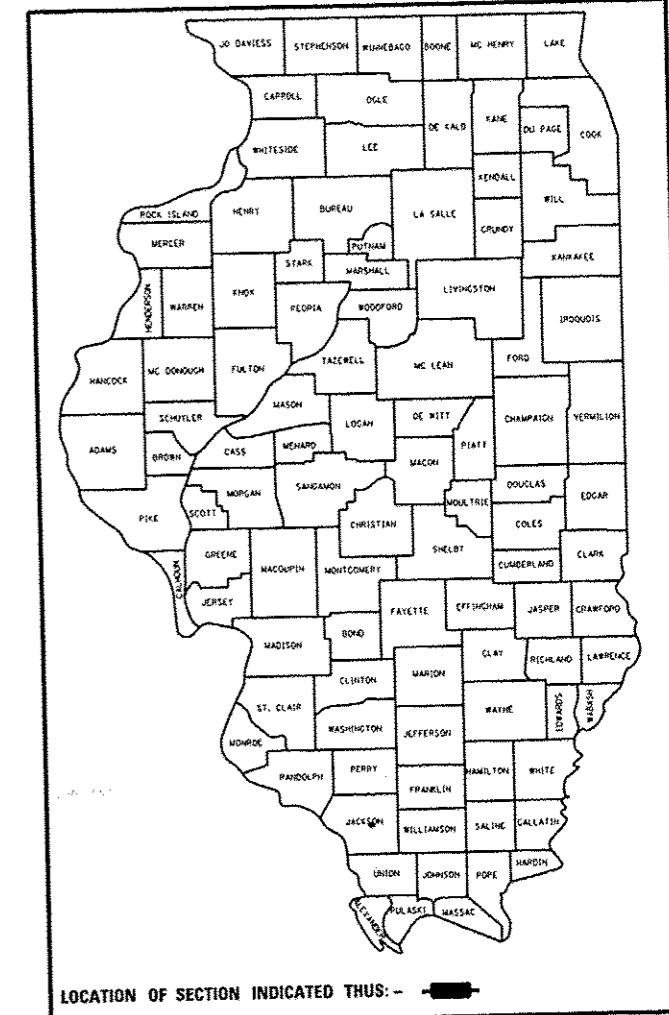
FAP ROUTE 331 (IL 13)  
SECTION (5-2,6,12-1)RS-3  
PROJECT NHPP-0331(064)  
3P RESURFACING  
JACKSON COUNTY

C-99-008-13

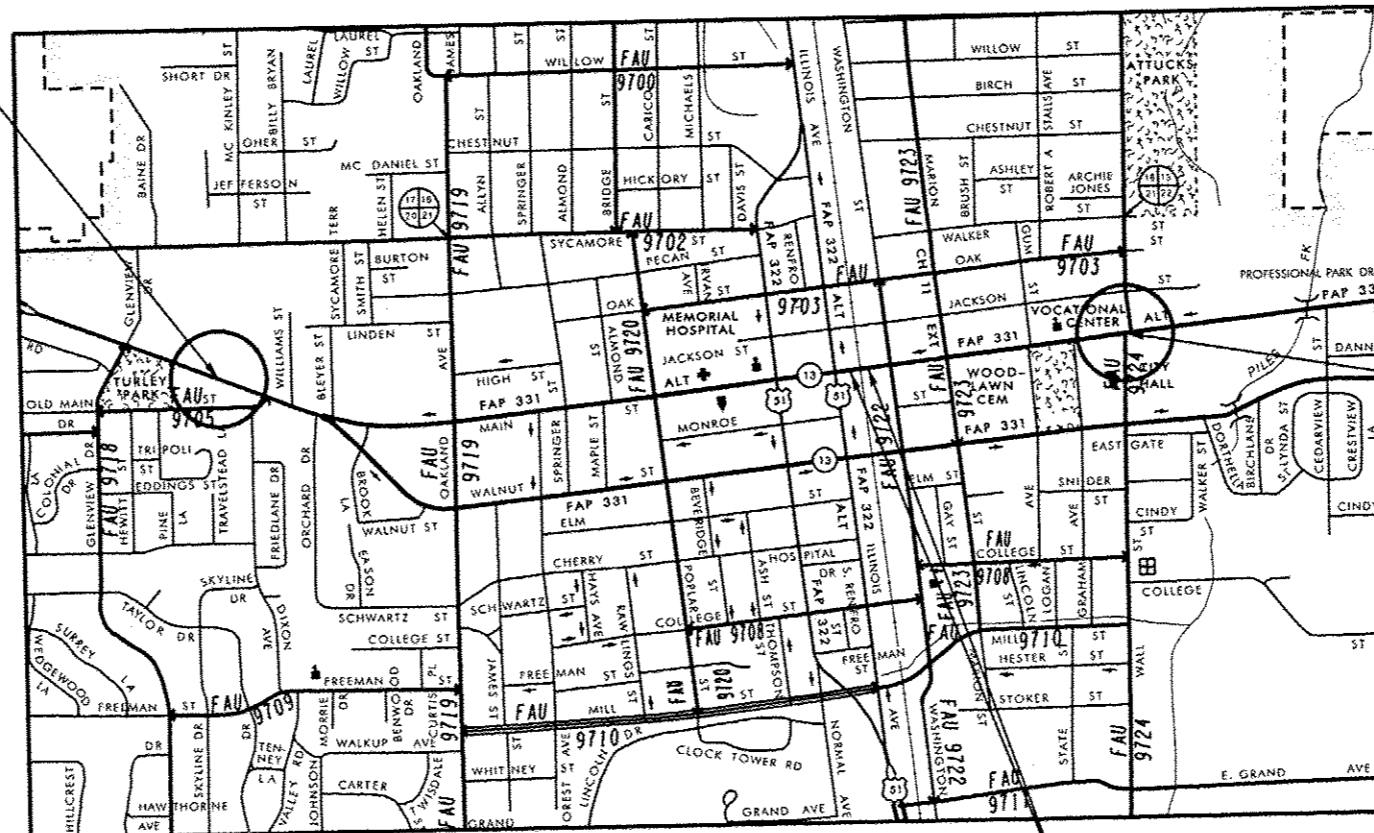
FOR INDEX OF SHEETS, SEE SHEET NO. 3

FOR SUMMARY OF QUANTITIES, SEE SHEET NO. 4-6

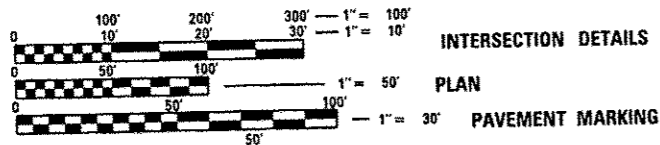
D-99-008-13



PROPOSED IMPROVEMENT  
ENDS FAP 331  
STA. 26+20 (BUTT JT.)



PROPOSED IMPROVEMENT  
BEGINS FAP 331 (WALL ST.)  
STA. 72+38 (BUTT JT.)

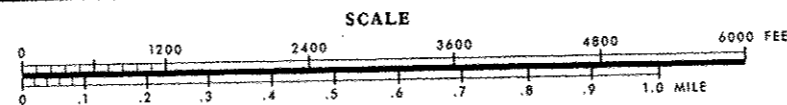


FULL SIZE PLANS HAVE BEEN PREPARED USING STANDARD ENGINEERING SCALES. REDUCED SIZED PLANS WILL NOT CONFORM TO STANDARD SCALES. IN MAKING MEASUREMENTS ON REDUCED PLANS, THE ABOVE SCALES MAY BE USED.

J.U.L.I.E.  
JOINT UTILITY LOCATION INFORMATION FOR EXCAVATION  
1-800-892-0123  
OR 811

PROJECT ENGINEER - JOE BASDEN  
PROJECT MANAGER - SUSAN POE  
(618) 549-2171

CONTRACT NO. 78331



OMISSION STA. -(6+88) TO  
STA. -(6+51) - CN RAILROAD  
CROSSING

GROSS LENGTH = 7,424.60 FT. = 1.406 MILE  
NET LENGTH = 7,374.90 FT. = 1.400 MILE

STATE OF ILLINOIS  
DEPARTMENT OF TRANSPORTATION  
DIVISION OF HIGHWAYS

SUBMITTED *Dec 19th 2012*

*John D. Baranelli*  
REGIONAL DIRECTOR OF HIGHWAYS, REGION ENGINEER

*May 10 2013*  
*John D. Baranelli, P.E.*  
acting ENGINEER OF DESIGN AND ENVIRONMENT

*May 10 2013*  
*Omer Osman, P.E.*  
DIRECTOR OF HIGHWAYS, CHIEF ENGINEER

PRINTED BY THE AUTHORITY  
OF THE STATE OF ILLINOIS

Prepared By: Joe Zdaniewicz  
DISTRICT STUDIES & PLANS ENGINEER

Examined By: James Eric Eng  
DISTRICT LAND ACQUISITION ENGINEER

Examined By: Carrie Nelson  
DISTRICT PROGRAM DEVELOPMENT ENGINEER

Examined By: Keel Kelly  
DISTRICT OPERATIONS ENGINEER

Examined By: Daglar J. Zulfikar  
DISTRICT CONSTRUCTION ENGINEER

Examined By: Bruce W. Peoples  
DISTRICT MATERIALS ENGINEER

Examined By: K. R. [Signature]  
DISTRICT PROJECT IMPLEMENTATION ENGINEER

Approved By: James M. [Signature]  
DEPUTY DIRECTOR OF HIGHWAYS, REGION ENGINEER

Dec 19<sup>th</sup> 20 12  
DATE

FILE NAME *	USER NAME * bosdenjn	DESIGNED -	REVISED -
c:\pwwork\pwwork\bosdenjn\d0315140\sheet	ovr_402_index.dgn	DRAWN -	REVISED -
	PLOT SCALE = 100.0013 1/2 in.	CHECKED -	REVISED -
#MODELNAME#	PLOT DATE = 12/13/2012	DATE -	REVISED -

**STATE OF ILLINOIS  
DEPARTMENT OF TRANSPORTATION**

**SIGNATURE BLOCK**

SCALE: SHEET OF SHEETS STA. TO STA.

F.A.P. RTE.	SECTION	COUNTY	TOTAL SHEETS	SHEET NO.
331	15-2.6.12-11R5-3	JACKSON	27	2
ILLINOIS FED. AID PROJECT				

CONTRACT NO. 78331

## INDEX OF SHEETS

SHT NO	DESCRIPTION
1	COVER SHEET
2	SIGNATURE BLOCK
3	INDEX OF SHEETS, STANDARDS, MIXTURES REQUIREMENTS, GENERAL NOTES
4-6	SUMMARY OF QUANTITIES
7-9	TYPICAL SECTIONS
10-13	SCHEDULES OF QUANTITIES
14-16	PLAN
17-19	PAVEMENT MARKING PLAN
20-22	INTERSECTION DETAILS
23	DETAILS: BUTT JOINT AT RAILROAD CROSSING
24	DETAILS: BUTT JOINT AT BEGINNING AND ENDING OF PROJECT
25	DETAILS: SIDEROAD AND ENTRANCE
26	STANDARD DETAILS - TEMP. HOT-MIX ASPHALT TRANSITIONS
27	STANDARD DETAILS - ROUGH GROOVED SURFACE SIGN, UNEVEN LAND SIGN

## STANDARDS

000001-06	STANDARD SYMBOLS, ABBREVIATIONS, AND PATTERNS
001006	DECIMAL OF AN INCH AND OF A FOOT
442201-03	CLASS C AND D PATCHES
701427-01	LANE CLOSURE, MULTILANE, INTERMITTENT OR MOVING OPER., FOR SPEEDS < 40 MPH
701601-08	URBAN LANE CLOSURE MULTILANE, 1W OR 2W WITH NONTRAVERSABLE MEDIAN
701701-08	URBAN LANE CLOSURE MULTILANE INTERSECTION
701901-02	TRAFFIC CONTROL DEVICES
780001-03	TYPICAL PAVEMENT MARKINGS
886001-01	DETECTOR LOOP

MIXTURE REQUIREMENTS SHALL BE PREPARED AS DIRECTED BELOW:

FOR IL. 13 MAINLINE HOT-MIX ASPHALT SURFACE COURSE:

Mixture Use(s):	Polymerized Hot-Mix Asphalt Surface Course, Mix D, N90
AC/PG:	SBS PG76-22
RAP % (Max.):	0
Design Air Voids:	4.0%, 90 Gyration Design
Mixture Composition: (Gradation Mixture)	IL-9.5mm or IL-12.5 mm
Friction Aggregate:	D Surface

FOR IL. 13 MAINLINE HOT-MIX ASPHALT BINDER COURSE:

Mixture Use(s):	Polymerized Hot-Mix Asphalt Leveling Binder, N90, IL-9.5 Fine-Graded
AC/PG:	SBS PG76-22
RAP % (Max.):	0
Design Air Voids:	4.0%, 90 Gyration Design
Mixture Composition: (Gradation Mixture)	IL-9.5 FG
Friction Aggregate:	None

## GENERAL NOTES

- FACTORS USED FOR ESTIMATING PLAN QUANTITIES ARE AS FOLLOWS AND SHALL NOT BE USED FOR THE BASIS OF FINAL QUANTITIES:
 

ALL HOT MIX ASPHALT	2.016 TONS/CU YD
ALL AGGREGATE	2.05 TONS/CU YD
BITUMINOUS MATERIALS:	
ON PAVEMENT	0.09 GAL/SQ YD
INTERMEDIATE LIFTS (FOG COATS)	0.04 GAL/SQ YD
ON AGGREGATE SURFACE	0.32 GAL/SQ YD
AGGREGATE (PRIME COAT)	0.0015 TONS/SQ YD
RIPRAP	1.50 TONS/CU YD
- THE QUANTITY OF SHORT TERM PAVEMENT MARKING SHOWN IN THE PLANS IS BASED ON ONE APPLICATION EACH FOR THE PRIME COAT, SURFACE COURSE, AND BINDER COURSE.
- AT ALL LOCATIONS WHERE THE PROPOSED HOT MIX ASPHALT OR CONCRETE PAVEMENT JOINS AN EXISTING HOT MIX ASPHALT OR CONCRETE PAVEMENT, A FULL DEPTH SAWED JOINT SHALL BE CONSTRUCTED. THE COST OF THIS JOINT WILL BE INCLUDED IN THE COST OF THE TYPE OF PAVEMENT BEING CONSTRUCTED.
- PRIOR TO PLACEMENT OF THE FINAL PAVEMENT MARKINGS THE RESIDENT ENGINEER SHOULD CONTACT THE BUREAU OF OPERATIONS AND ARRANGE FOR INSPECTION AND APPROVAL OF THE PAVEMENT MARKING LAYOUT.
- THE USE OF A VIBRATING ROLLER SHALL BE PROHIBITED. THE CONTRACTOR MAY BE REQUIRED TO MAKE ROLLING PATTERN ADJUSTMENTS TO OBTAIN THE REQUIRED FIELD DENSITY.
- QUANTITIES SHOWN IN THE PLANS FOR PATCHING ARE ESTIMATES. THE ACTUAL AMOUNT OF PATCHING REQUIRED SHALL BE DETERMINED BY THE ENGINEER.
- BITUMINOUS RESURFACING SHALL BE PLACED IN A SEQUENCE THAT WILL MINIMIZE THE TIME THE CENTERLINE EDGE IS EXPOSED TO TRAFFIC. WHEN AT THE END OF A DAY'S OPERATION THE EXPOSED CENTERLINE EDGE IS GREATER THAN 600 METERS (2,000 FT.), THE CONTRACTOR SHALL BE REQUIRED TO PAVE IN THE ADJACENT LANE ON THE FOLLOWING WORK DAY. PRIOR TO WINTER SHUTDOWN, RESURFACING ON ADJACENT LANES IS TO BE BROUGHT UP TO THE SAME ELEVATION.
- ALL DETECTOR LOOP CORNERS SHALL BE CORE DRILLED 5.08 cm (2 IN.) MINIMUM DIAMETER EXCEPT THOSE PLACED UNDER RESURFACING. THE DETECTOR LOOP CORNERS PLACED UNDER RESURFACING SHALL BE DIAGONALLY SAWCUT.
- SAWED SLOTS FOR TWISTED PAIR ELECTRIC CABLES SHALL BE LARGER THAN SINGLE CONDUCTOR LOOP SLOTS.
- THE LOCATION OF THE DETECTOR LOOPS AND TRAFFIC SIGNAL FOUNDATIONS, AS SHOWN ON THE PLANS, MAY BE ADJUSTED TO FIT FIELD CONDITIONS AS DIRECTED BY THE ENGINEER OF TRAFFIC OPERATIONS.
- ALL DETECTOR LOOPS SHALL BE INSTALLED PRIOR TO RESURFACING.
- THE CONTRACTOR SHALL NOTIFY THE ENGINEER OF TRAFFIC OPERATIONS 72 HOURS PRIOR TO THE SHUT-DOWN OR CUTTING OF EXISTING DETECTOR LOOPS.

## COMMITMENTS

NONE

FILE NAME:	USER NAME: #USCR8	DESIGNED -	REVISED -	<b>STATE OF ILLINOIS DEPARTMENT OF TRANSPORTATION</b>	<b>INDEX OF SHEETS, STANDARDS, AND GENERAL NOTES</b>			F.A.P. RTE.	SECTION	COUNTY	TOTAL SHEETS	SHEET NO.	
cr:\pwork\spidat\helling\0315140\1\1\1	usr_eog_index.dgn	DRAWN -	REVISED -		SCALE:	SHEET	OF	SHEETS	STA.	TO STA.	JACKSON	27	3
	PLOT SCALE: 100.0000 / 1 in.	CHECKED -	REVISED -										
MODEL/NAME:	PLOT DATE: 1/4/2013	DATE	REVISED -										
ILLINOIS FED. AID PROJECT											CONTRACT NO. 78331		



SUMMARY OF QUANTITIES

CODE NO.	ITEM	UNIT	TOTAL QUANTITY	CONSTR. CODE	
				80% FED	20% STATE ROADWAY
				0005	URBAN
70102635	TRAFFIC CONTROL AND PROTECTION, STANDARD 701701	L SUM	1	1	
70106800	CHANGEABLE MESSAGE SIGN	CAL MO	4	4	
70200100	NIGHTTIME WORK ZONE LIGHTING	L SUM	1	1	
* 70300100	SHORT TERM PAVEMENT MARKING	FOOT	1920	1920	
* 70300210	TEMPORARY PAVEMENT MARKING LETTERS AND SYMBOLS	SQ FT	399	399	
* 70300220	TEMPORARY PAVEMENT MARKING - LINE 4"	FOOT	6,468	6,468	
* 70300240	TEMPORARY PAVEMENT MARKING - LINE 6"	FOOT	2894	2894	
* 70300250	TEMPORARY PAVEMENT MARKING - LINE 8"	FOOT	371	371	
* 70300260	TEMPORARY PAVEMENT MARKING - LINE 12"	FOOT	940	940	
* 70300280	TEMPORARY PAVEMENT MARKING - LINE 24"	FOOT	612	612	
70301000	WORK ZONE PAVEMENT MARKING REMOVAL	SQ FT	7,822	7,822	
* 78003100	PREFORMED PLASTIC PAVEMENT MARKING, TYPE B - LETTERS AND SYMBOLS	SQ FT	399	399	
* 78004210	PREFORMED PLASTIC PAVEMENT MARKING, TYPE B - INLAID - LINE 4"	FOOT	6,468	6,468	
* 78004230	PREFORMED PLASTIC PAVEMENT MARKING, TYPE B - INLAID - LINE 6"	FOOT	2894	2894	

\*SPECIALTY ITEM

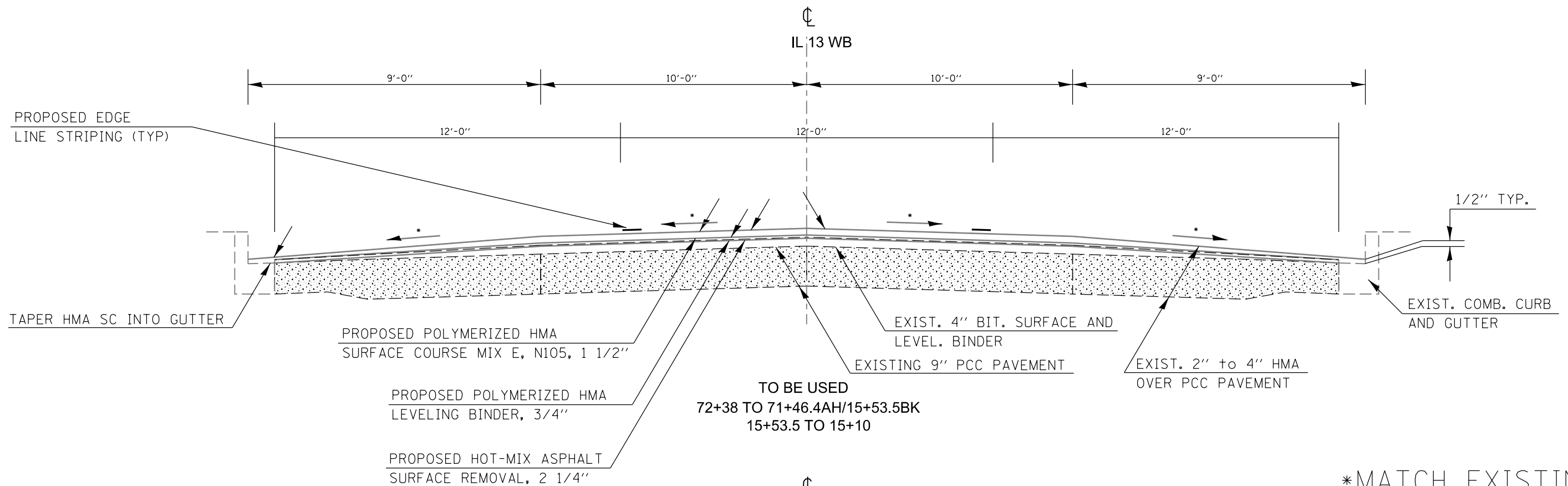
SUMMARY OF QUANTITIES

ISS 1 8 1401

CODE NO.	ITEM	UNIT	TOTAL QUANTITY	CONSTR. CODE
				80% FED 20% STATE ROADWAY 0005 URBAN
* 78004240	PREFORMED PLASTIC PAVEMENT MARKING, TYPE B - INLAID - LINE 8"	FOOT	371	371
* 78004250	PREFORMED PLASTIC PAVEMENT MARKING, TYPE B - INLAID - LINE 12"	FOOT	940	940
* 78004280	PREFORMED PLASTIC PAVEMENT MARKING, TYPE B - INLAID - LINE 24"	FOOT	612	612
* 78100100	RAISED REFLECTIVE PAVEMENT MARKER	EACH	241	241
78300200	RAISED REFLECTIVE PAVEMENT MARKER REMOVAL	EACH	241	241
88600100	DETECTOR LOOP, TYPE 1	FOOT	1036	1036
20034105	MATERIAL TRANSFER DEVICE	TON	4569	4569
20048665	RAILROAD PROTECTIVE LIABILITY INSURANCE	L SUM	1	1

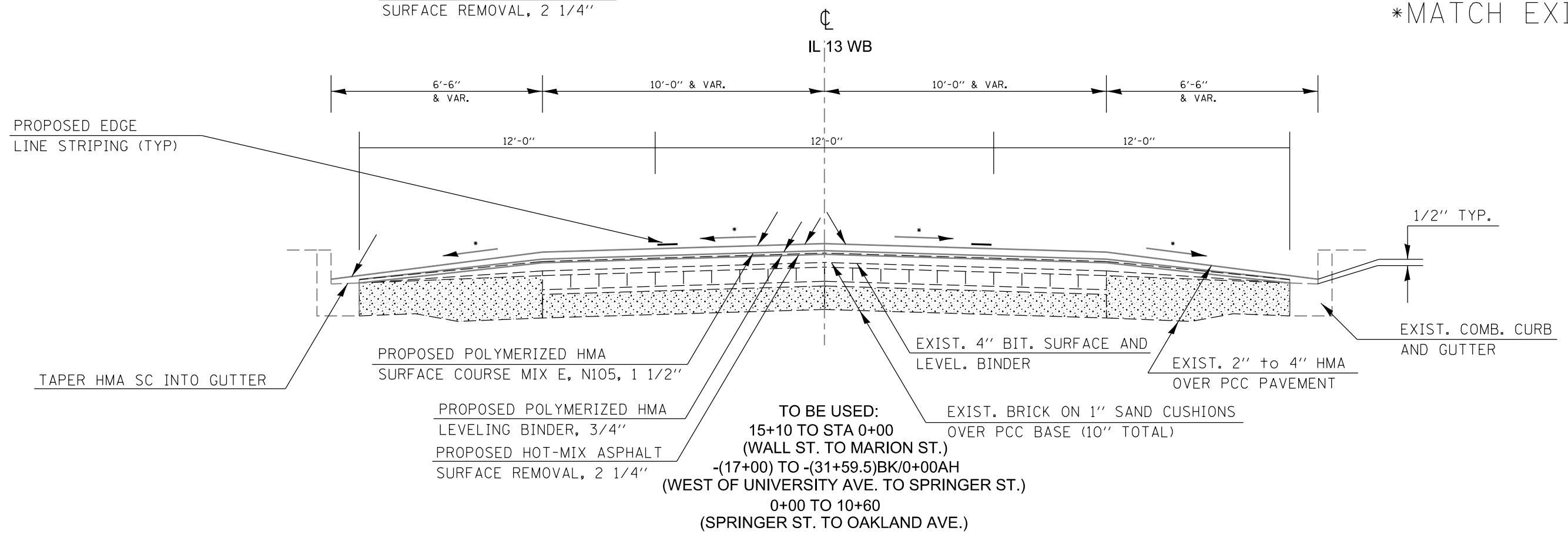
\*SPECIALTY ITEM

FILE NAME : c:\p-work\pudot\kelly\1401\1401\shk	USER NAME : #USER# c:\p-work\pudot\kelly\1401\1401\shk	DESIGNED - DRAWN -	REVISED - REVISED -	STATE OF ILLINOIS DEPARTMENT OF TRANSPORTATION	SUMMARY OF QUANTITIES			F.A. RTE. 331	SECTION (S-2,6,12-1)RS-3	COUNTY JACKSON	TOTAL SHEETS 27	SHEET NO. 6
*MODEL NAME #	PLOT SCALE : 100.0000' / 1" PLOT DATE : 1/4/2013	CHECKED - DATE -	REVISED - REVISED -		SCALE:	SHEET	OF	SHEETS	STA.	TO STA.	ILLINOIS FED. AID PROJECT CONTRACT NO. 78331	



TO BE USED  
 72+38 TO 71+46.4AH/15+53.5BK  
 15+53.5 TO 15+10

\*MATCH EXISTING



TO BE USED:  
 15+10 TO STA 0+00  
 (WALL ST. TO MARION ST.)  
 -(17+00) TO -(31+59.5)BK/0+00AH  
 (WEST OF UNIVERSITY AVE. TO SPRINGER ST.)  
 0+00 TO 10+60  
 (SPRINGER ST. TO OAKLAND AVE.)

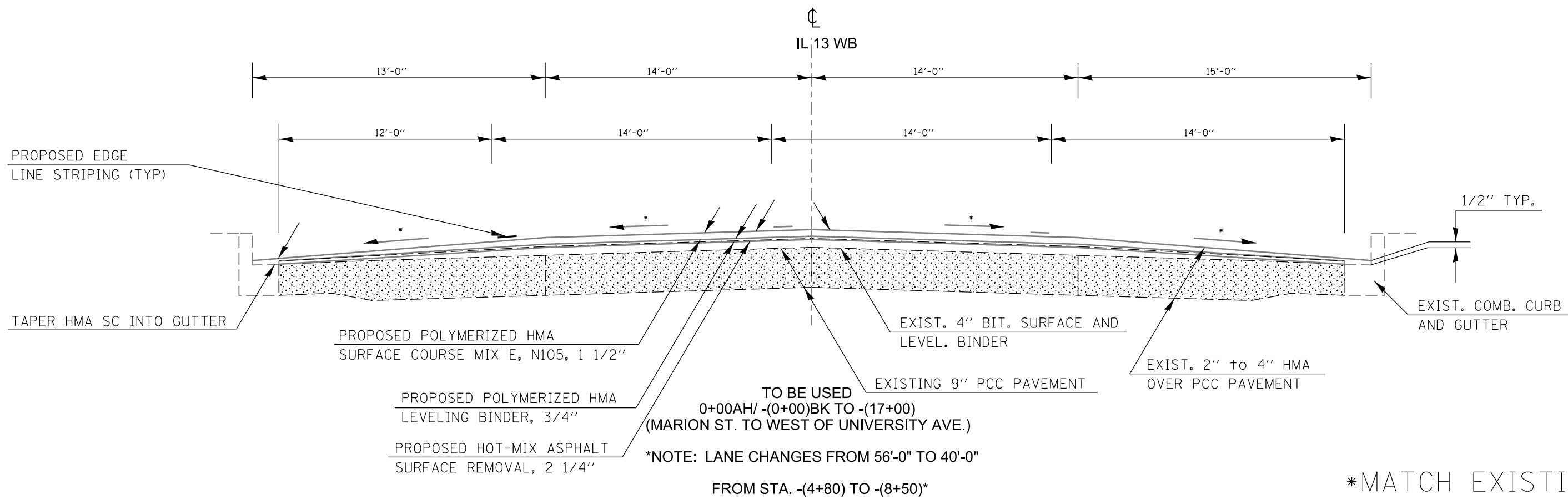
FILE NAME =	USER NAME = \$USER\$	DESIGNED -	REVISED -
c:\pwork\pwork\kellykd\0315140\shb	typ_sch_ties.dgn	DRAWN -	REVISED -
\$MODELNAME\$	PLOT SCALE = 100.0000' / in.	CHECKED -	REVISED -
	PLOT DATE = 1/4/2013	DATE -	REVISED -

STATE OF ILLINOIS  
 DEPARTMENT OF TRANSPORTATION

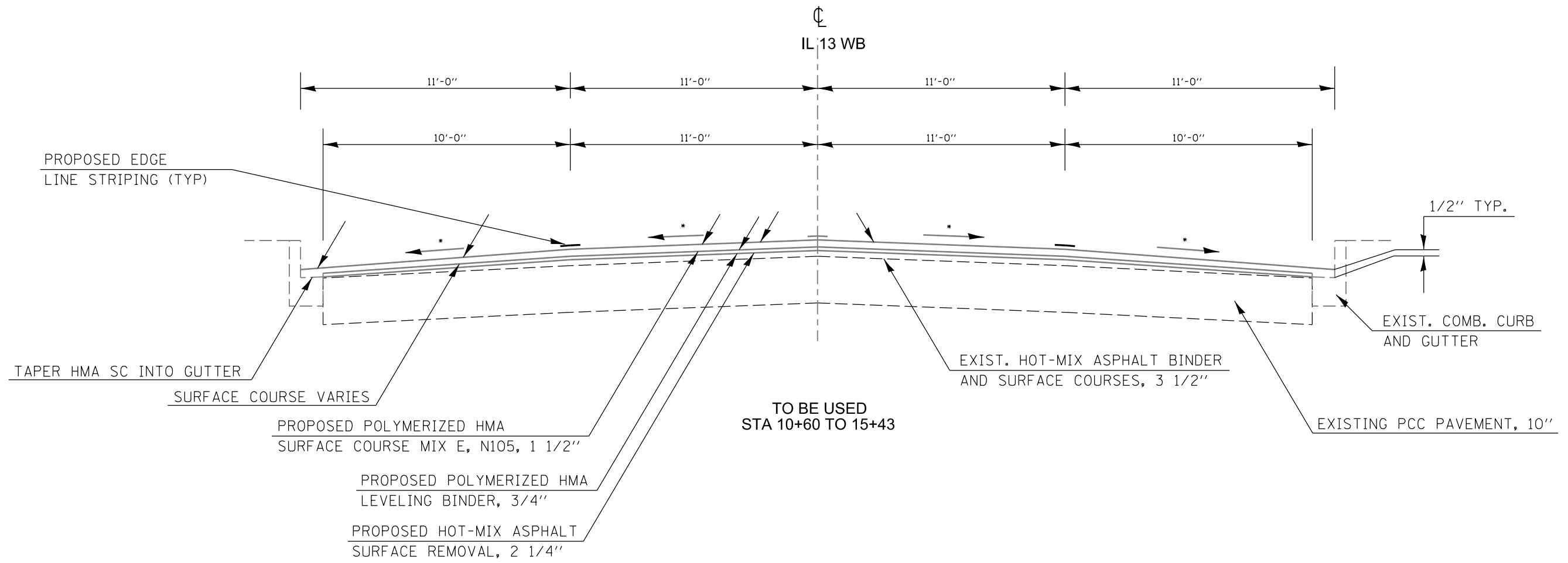
TYPICAL SECTIONS

SCALE: SHEET OF SHEETS STA. TO STA.

F.A.P. RTE.	SECTION	COUNTY	TOTAL SHEETS	SHEET NO.
331	(5-2,6,12-1)RS-3	JACKSON	27	7
CONTRACT NO. 78331				
ILLINOIS FED. AID PROJECT				

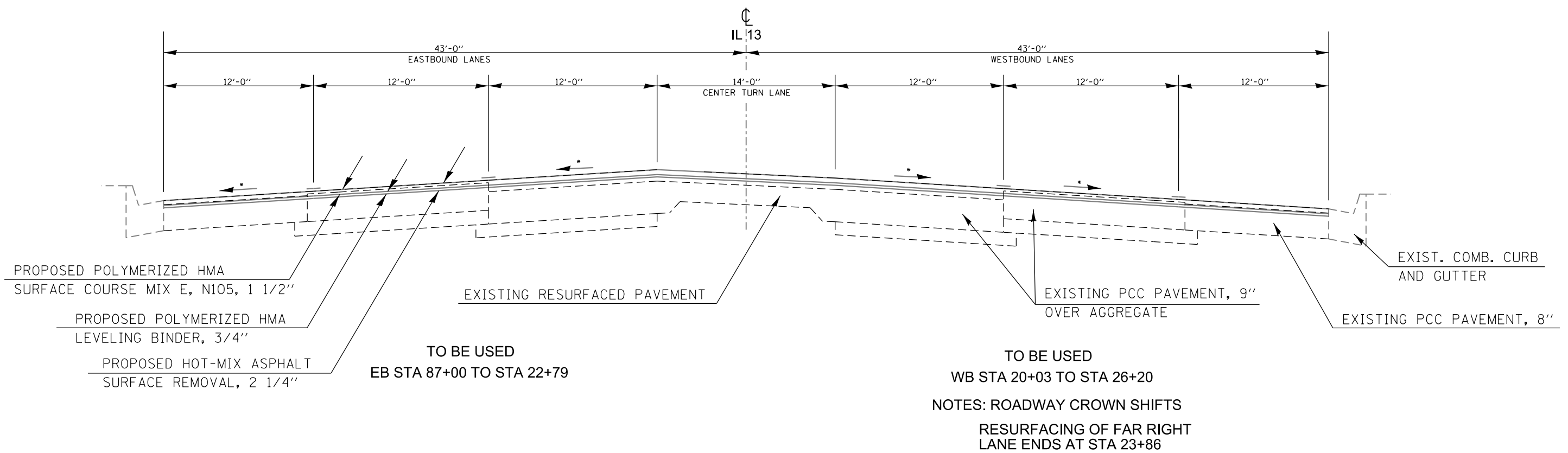
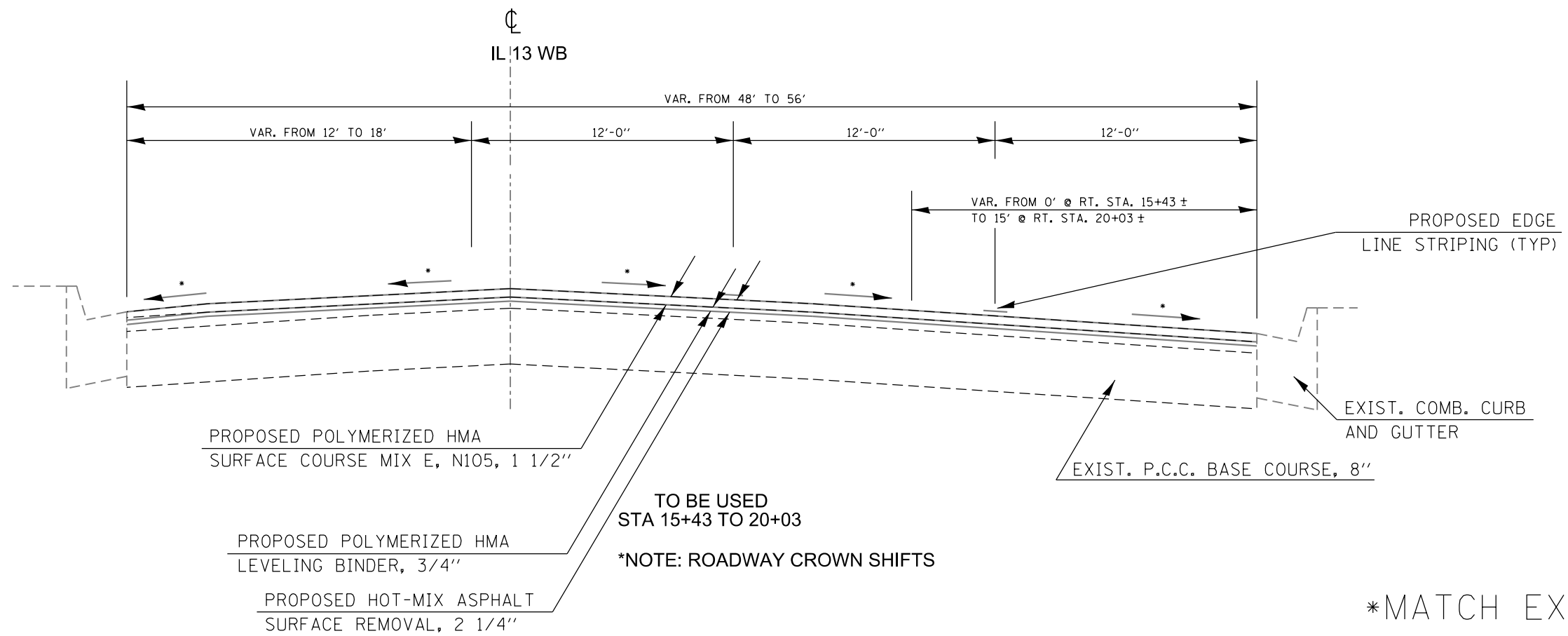


\*MATCH EXISTING



FILE NAME =	USER NAME = \$USER\$	DESIGNED -	REVISED -	<b>STATE OF ILLINOIS DEPARTMENT OF TRANSPORTATION</b>	<b>TYPICAL SECTIONS</b>				F.A.P. RTE.	SECTION	COUNTY	TOTAL SHEETS	SHEET NO.		
c:\pwork\pwork\dot\kellykd\0315140\shb	typ_sch_ties.dgn	DRAWN -	REVISED -		SCALE:	SHEET	OF	SHEETS	STA.	TO STA.	331	(5-2,6,12-1)RS-3	JACKSON	27	8
\$MODELNAME\$	PLOT SCALE = 100.0000' / 1in.	CHECKED -	REVISED -												
	PLOT DATE = 1/4/2013	DATE -	REVISED -												
											CONTRACT NO. 78331				
											ILLINOIS FED. AID PROJECT				





FILE NAME =	USER NAME = thomeshf	DESIGNED -	REVISED -
ct:\pw\work\p\dot\thomeshf\0315140\shb\typ_sch.ttes.dgn		DRAWN -	REVISED -
Default	PLOT SCALE = 100.0000' / in.	CHECKED -	REVISED -
	PLOT DATE = 4/25/2013	DATE -	REVISED -

STATE OF ILLINOIS  
DEPARTMENT OF TRANSPORTATION

TYPICAL SECTIONS

SCALE: SHEET OF SHEETS STA. TO STA.

F.A.P. RTE.	SECTION	COUNTY	TOTAL SHEETS	SHEET NO.
331	(5-2,6,12-1)RS-3	JACKSON	27	9
CONTRACT NO. 78331				
ILLINOIS FED. AID PROJECT				

## RESURFACING SCHEDULE

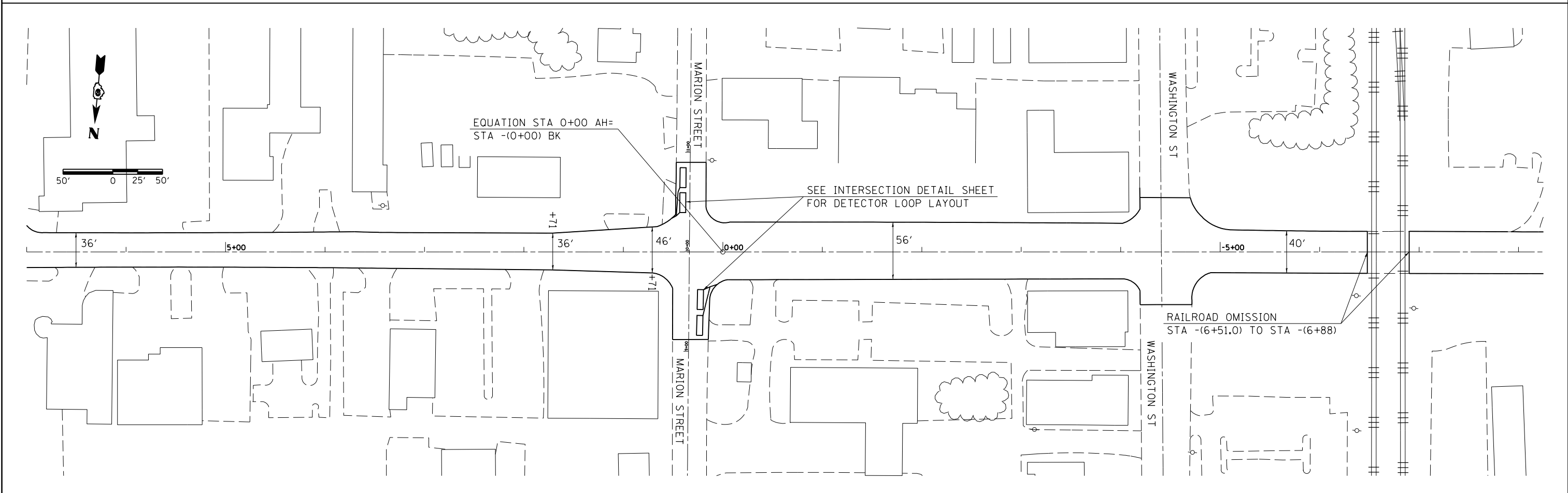
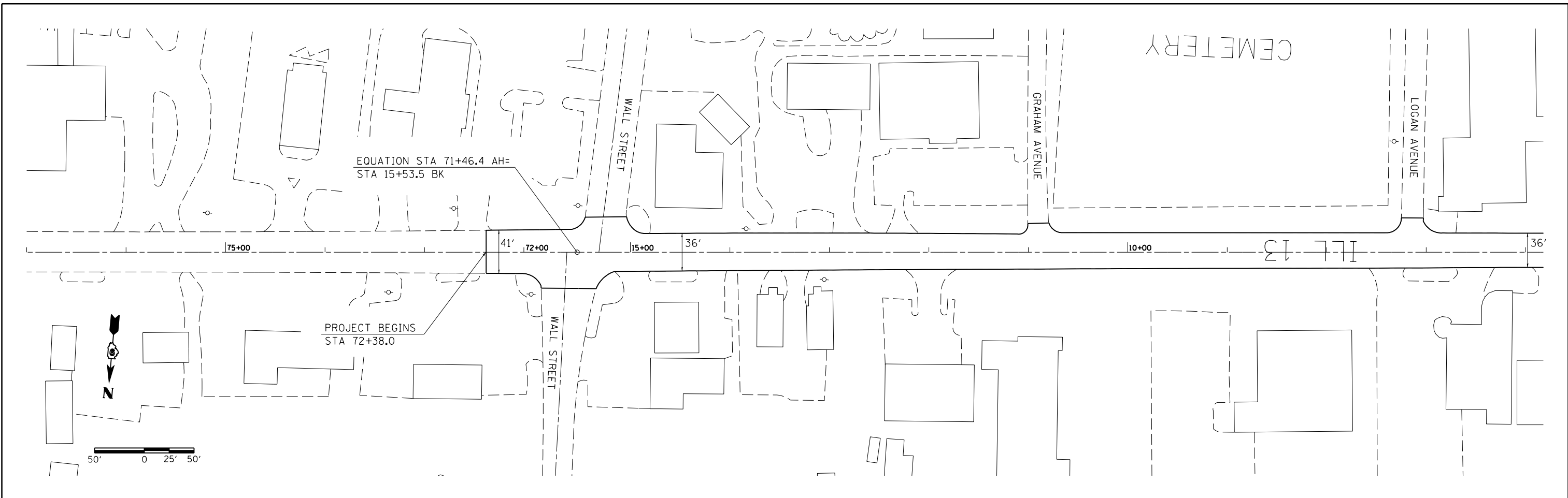
LOCATION STATION TO STATION			LENGTH	ROADWAY WIDTH	ROADWAY AREA	HOT-MIX ASP. SURF. REM. 2 1/4"	TEMPORARY RAMP	POLY. HOT-MIX ASP. SUR. CSE., MIX E, N 105	POLY. LEVEL. BINDER (MM) N105	POLY. BIT. MAT. (PRIME COAT)	AGG. (PRIME COAT)	NOTES	
			FOR INFORMATIONAL PURPOSE ONLY										
			( FT )	( FT )	( SQ YD )	( SQ YD )	( SQ YD )	( SQ YD )	( TON )	( TON )	( GAL )		( TON )
<b>MAINLINE - STA. 72+38 TO STA. 26+20 ( INLAY )</b>													
	72+38.00	TO	71+46.40	91.6	41.0	417.3	417	34	35	18	37.6	0.6	
	<b>71+46.40</b>	=	<b>15+53.50</b>	<b>STATION EQUATION</b>									
	15+53.50	TO	15+10.00	43.5	38.0	183.7	184		15	8	16.5	0.3	
	15+10.00	TO	1+71.00	1339.0	36.0	5356.0	5356		450	225	482.0	8.0	
	1+71.00	TO	0+71.00	100.0	41.0	455.6	456		38	19	41.0	0.7	
	0+71.00	TO	0+00.00	71.0	51.0	402.3	402		34	17	36.2	0.6	
	<b>0+00.00</b>	=	<b>-( 0+00.00 )</b>	<b>STATION EQUATION</b>									
	-( 0+00.00 )	TO	-( 4+80.00 )	480.0	56.0	2986.7	2987		251	125	268.8	4.5	
	-( 4+80.00 )	TO	-( 6+51.00 )	171.0	40.0	760.0	760		64	32	68.4	1.1	
	-( 6+51.00 )		RR Xing					47					
	<b>-( 6+51.00 )</b>	=	<b>-( 6+88.00 )</b>	<b>RAILROAD OMISSION</b>									
	-( 6+88.00 )		RR Xing					33					
	-( 6+88.00 )	TO	-( 8+50.00 )	162.0	40.0	720.0	720		60	30	64.8	1.1	
	-( 8+50.00 )	TO	-( 9+30.00 )	80.0	48.0	426.7	427		36	18	38.4	0.6	
	-( 9+30.00 )	TO	-( 16+32.00 )	702.0	56.0	4368.0	4368		367	183	393.1	6.6	
	-( 16+32.00 )	TO	-( 17+60.00 )	128.0	50.5	718.2	718		60	30	64.6	1.1	
	-( 17+60.00 )	TO	-( 18+32.00 )	72.0	40.5	324.0	324		27	14	29.2	0.5	
	-( 18+32.00 )	TO	-( 31+59.50 )	1327.5	36.0	5310.0	5310		446	223	477.9	8.0	
	<b>-( 31+59.50 )</b>	=	<b>0+00.00</b>	<b>STATION EQUATION</b>									
	0+00.00	TO	8+73.00	873.0	36.0	3492.0	3492		293	147	314.3	5.2	
	8+73.00	TO	10+60.00	187.0	40.0	831.1	831		70	35	74.8	1.2	
	10+60.00	TO	15+43.00	483.0	44.0	2361.3	2361		198	99	212.5	3.5	
	15+43.00	TO	16+50.00	107.0	47.0	558.8	559		47	23	50.3	0.8	
	16+50.00	TO	19+00.00	250.0	50.0	1388.9	1389		117	58	125.0	2.1	
	19+00.00	TO	20+03.00	103.0	57.5	658.1	658		55	28	59.2	1.0	
	20+03.00	TO	22+30.40	227.4	50.0	1263.3	1263		106	53	113.7	1.9	
	<b>22+30.40</b>	=	<b>22+43.09</b>	<b>STATION EQUATION</b>									
	22+43.09	TO	23+86.00	142.9	50.0	793.9	794	10	67	33	71.5	1.2	
	23+86.00	TO	26+20.00	234.0	38.0	988.0	988	30	83	42	88.9	1.5	
<b>IL 13 EASTBOUND LANES</b>													
	87+00.00	TO	83+62.86	337.1	36.0	1348.6	1349	30	113	57	121.4	2.0	
	<b>83+62.86</b>	=	<b>22+43.09</b>	<b>STATION EQUATION</b>									
	22+43.09		22+79.00	35.9	36.0	143.6	144	30	12	6	12.9	0.2	
<b>TOTALS</b>							<b>36256</b>	<b>214</b>	<b>3046</b>	<b>1523</b>	<b>3263</b>	<b>54</b>	

## SIDE ROAD RESURFACING SCHEDULE

NAME	STATION		SURFACE TYPE	WIDTH AT EDGE	DISTANCE TO	WIDTH AT END	SURFACE	HMA SURFACE	POLY BIT	AGGREGATE (PR	INCIDENTAL	TEMPORARY
				OF PAVEMENT	END OF	OF SURFACING		REMOVAL, 2	MATERIAL (PR		CT)	HMA SURFACE
				( FT )	( FT )	( FT )	( SQ YD )	( SQ YD )	( GAL )	( TON )	( TON )	( SQ YD )
N. WALL ST.	RT.	15+53.50	BIT	83	12	55	92.0	92	8.3	0.1	12	69.2
S. WALL ST.	LT.	15+18.00	BIT	74	12	46	80.0	80	7.2	0.1	10	61.7
S. GRAHAM AVE.	LT.	10+84.00	BIT	48	10	22	38.9	39	3.5	0.1	5	
N. GUM ST.	RT.	07+32.00	CONC TO BIT									
S. LOGAN AVE.	LT.	07+06.00	BIT	59	15	23	68.3	68	6.2	0.1	9	
N. MARION ST.	RT.	0+20.00	BIT	36	60	36	240.0	240	21.6	0.4	30	30.0
S. MARION ST.	LT.	0+20.00	BIT	30	60	31	203.3	203	18.3	0.3	26	25.0
N. WASHINGTON ST.	RT.	-( 04+64.00)	BRICK	100	26	50	216.7	217	19.5	0.3	27	83.3
S. WASHINGTON ST.	LT.	-( 04+64.00)	BRICK	102	26	52	222.4	222	20.0	0.3	28	85.0
N. ILLINOIS AVE.	RT.	-( 09+00.00)	BIT	83	20	49	146.7	147	13.2	0.2	18	69.2
S. ILLINOIS AVE.	LT.	-( 09+00.00)	BIT	77	20	50	141.1	141	12.7	0.2	18	64.2
N. UNIVERSITY AVE.	RT.	-( 13+72.00)	BIT	83	20	38	134.4	134	12.1	0.2	17	69.2
S. UNIVERSITY AVE.	LT.	-( 13+72.00)	BIT	89	20	38	141.1	141	12.7	0.2	18	74.2
N. POPLAR ST.	RT.	-( 23+95.00)	BIT	31	60	30	203.3	203	18.3	0.3	26	25.8
S. POPLAR ST.	LT.	-( 23+95.00)	BIT	74	23	37	141.8	142	12.8	0.2	18	61.7
N. ALMOND ST.	RT.	-( 27+52.00)	BIT	54	22	26	97.8	98	8.8	0.1	12	
S. MAPLE ST.	LT.	-( 28+28.00)	CONC									
N. SPRINGER ST.	RT.	-( 31+34.00)	BIT	56	22	25	99.0	99	8.9	0.1	3	
S. SPRINGER ST.	LT.	-( 31+34.00)	CONC									
S. FOREST AVE.	LT.	02+14.00	BIT	48	13	20	49.1	49	4.4	0.1	6	
N. OAKLAND AVE.	RT.	09+12.00	BIT	29	60	29	193.3	193	17.4	0.3	24	24.2
S. OAKLAND AVE.	LT.	09+12.00	BIT	100	15	50	125.0	125	11.3	0.2	16	83.3
S. BROOK LN.	LT.	16+20.00	CONC									
N. BLEYER ST.	RT.	19+46.00	BIT	44	34	16	113.3	113	10.2	0.2	14	
N. WILLIAMS ST.	RT.	23+29.30	CONC TO BIT									
<b>TOTALS</b>								2748	247	4	337	826

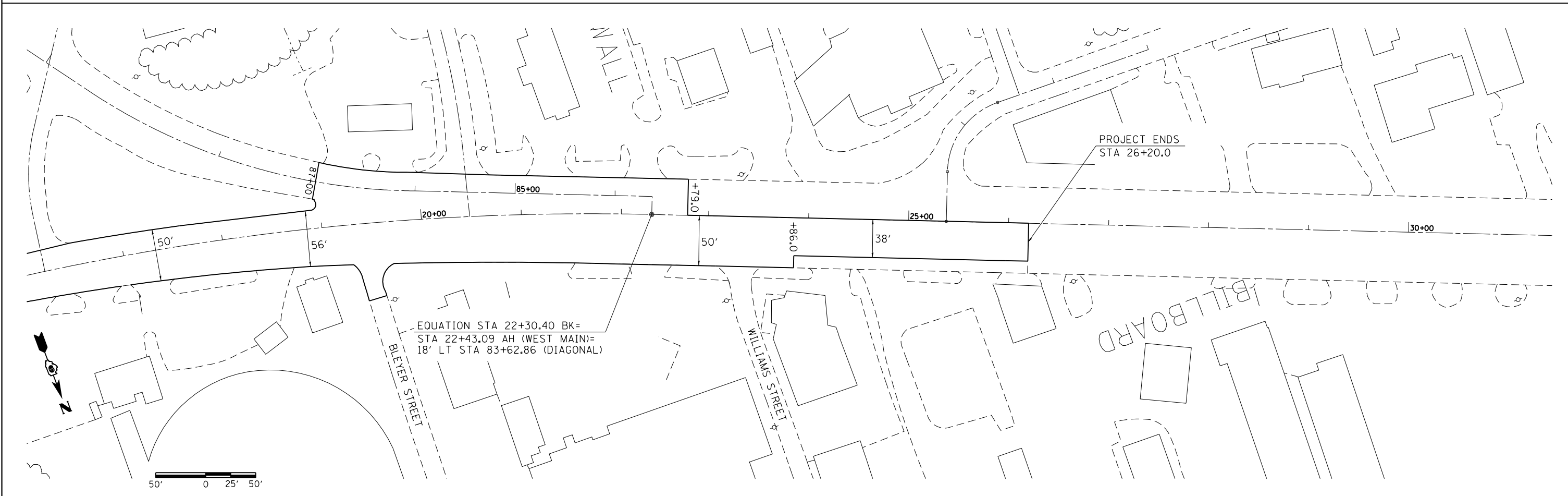
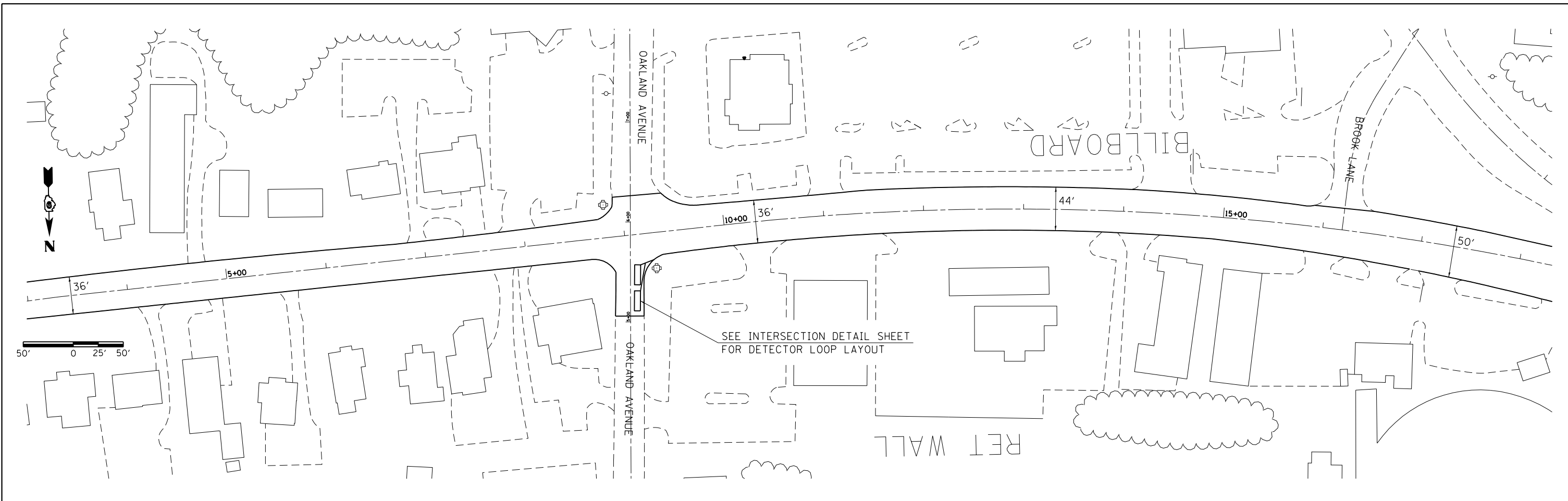
STATION TO STATION			PERFORMED PLASTIC PAVEMENT MARKING, TYPE B - INLAID								LETTERS AND SYMBOLS	NOTES	
			4" WHITE	4" YELLOW	4" SKIP-DASH WHITE	4" SKIP-DASH YELLOW	6" WHITE	8" WHITE	12" WHITE	12" YELLOW			24" WHITE
			FOOT	FOOT	FOOT	FOOT	FOOT	FOOT	FOOT	FOOT			FOOT
WESTBOUND													
	72+38	TO	71+46.40			45.8							
STA. EQU.	71+46.40	TO	15+53.5										
	15+53.5	TO	0+00			776.8							
STA. EQU.	0+00	TO	-(0+00)										
	-(0+00)	TO	-(6+51)			325.5		177.0				RR XING DIAGONALS	
RR XING	-(6+51)	TO	-(6+88)										
	-(6+88)	TO	-(31+59.5)			1235.8		140.0				RR XING DIAGONALS	
STA. EQU.	-(31+59.5)	TO	0+00										
	0+00	TO	22+30.4			1115.2							
EASTBOUND LANES	87+00.0	TO	83+62.9			168.6						EASTBOUND LANES	
STA. EQU.	22+30.4	TO	22+43.1										
EASTBOUND LANES	22+43.1	TO	22+79			18.0						EASTBOUND LANES	
	22+43.1	TO	26+20			188.5							
	20+75	TO	24+38		726.0		20.0					TURNING LANE	
LEFT	-(0+00)	TO	-(2+38)	238.0									
LEFT	-(2+38)	TO	-(4+00)	162.0									
LEFT	-(8+71)	TO	-(9+25)	16.0								TURN LANE GUIDE SKIP-DASH	
LEFT	-(11+36)	TO	-(13+31)	195.0									
LEFT	-(13+50)	TO	-(13+97)	18.0								TURN LANE GUIDE SKIP-DASH	
LEFT	-(16+10)	TO	-(17+57)	147.0									
LEFT	10+20	TO	10+80	60.0									
LEFT	12+03	TO	14+10	207.0									
LEFT	15+00	TO	15+98	98.0									
LEFT	19+20	TO	20+18	98.0									
N. MARION ST.	0+71				16.0							DOUBLE YELLOW	
S. MARION ST.	0+71				26.0							DOUBLE YELLOW	
N. WASHINGTON ST.	-(4+50)				7.0							DOUBLE YELLOW	
S. WASHINGTON ST.	-(4+50)				5.0							DOUBLE YELLOW	
N. POPLAR ST.	-(24+00)				40.0							DOUBLE YELLOW	
N. OAKLAND	9+00				23.0							DOUBLE YELLOW	
MEDIAN	16+35	TO	20+15		492.0				370.0			DBL YELLOW & DIAGONALS	
RIGHT	71+87	TO	15+25				110.0					CROSSWALK	
LEFT	15+40	TO	14+94				84.0					CROSSWALK	
	71+93						142.0					CROSSWALK	
RIGHT	0+05	TO	0+00				82.0					CROSSWALK	
LEFT	0+05	TO	0+41				64.0					CROSSWALK	
	0+68						86.0					CROSSWALK	
	-(0+13)						120.0					CROSSWALK	
RIGHT	-(4+13)	TO	-(4+75)				118.0					CROSSWALK	
LEFT	-(4+13)	TO	-(4+75)				118.0					CROSSWALK	
	-(4+00)						114.0					CROSSWALK	
	-(4+88)						126.0					CROSSWALK	
RIGHT	-(8+71)	TO	-(9+25)				102.0					CROSSWALK	
LEFT	-(8+71)	TO	-(9+15)				102.0					CROSSWALK	
	-(8+50)						100.0					CROSSWALK	
	-(9+38)						114.0					CROSSWALK	
RIGHT	-(13+50)	TO	-(13+97)				94.0					CROSSWALK	
LEFT	-(13+50)	TO	-(13+97)				94.0					CROSSWALK	
	-(13+50)						132.0					CROSSWALK	
	-(14+03)						128.0					CROSSWALK	
RIGHT	-(23+63)	TO	-(24+14)				100.0					CROSSWALK	
LEFT	-(23+81)	TO	-(24+15)				68.0					CROSSWALK	
	-(23+86)						134.0					CROSSWALK	
	-(24+23)						112.0					CROSSWALK	
RIGHT	8+85	TO	9+33				80.0					CROSSWALK	
LEFT	8+85	TO	9+63				136.0					CROSSWALK	
	8+86						88.0					CROSSWALK	
	9+71						96.0					CROSSWALK	
RIGHT	19+50	TO	19+75				50.0					CROSSWALK	





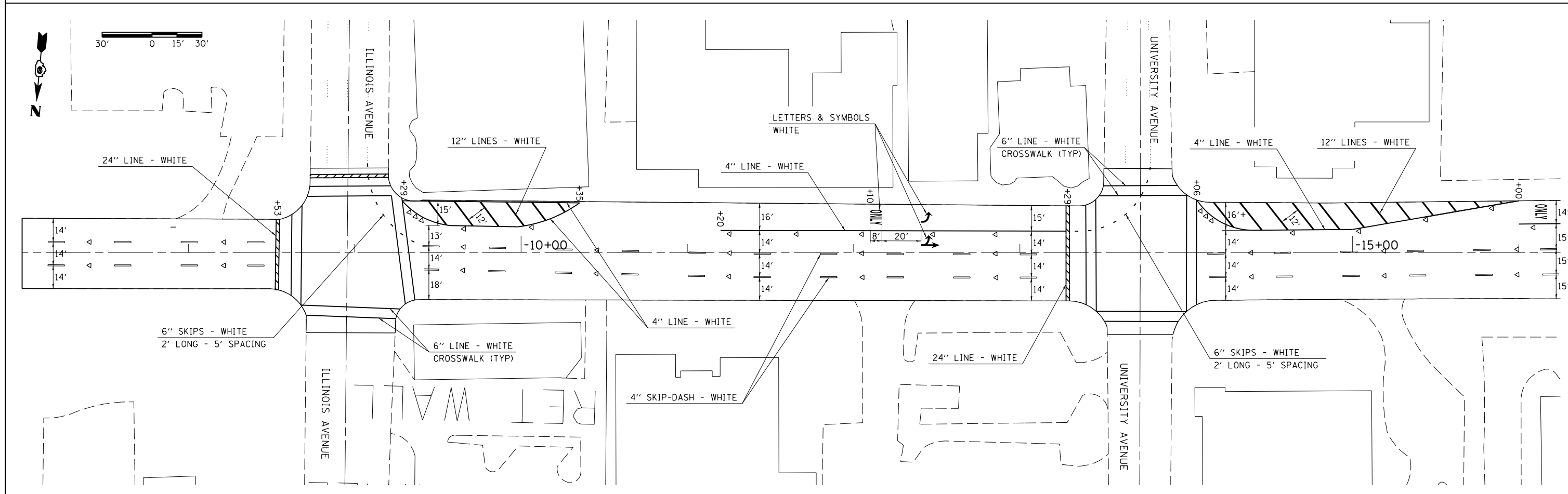
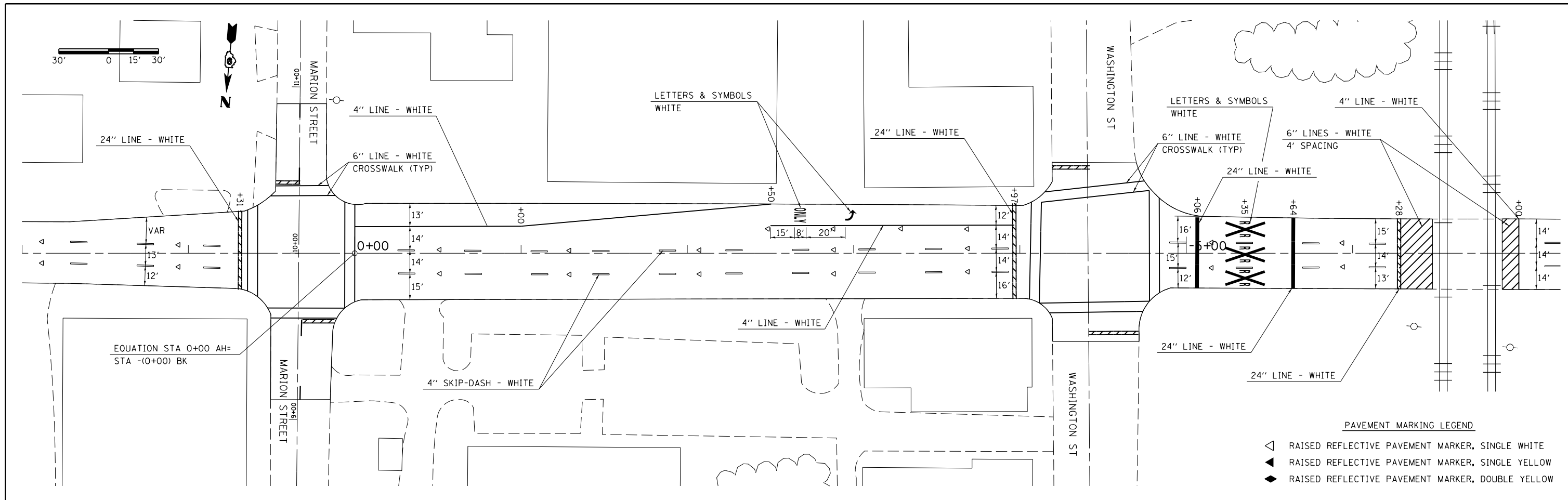
FILE NAME = c:\pwwork\pwwork\kellykd\0315140\78331\sho-pln.dgn	USER NAME = \$USER\$	DESIGNED -	REVISED -	<b>STATE OF ILLINOIS DEPARTMENT OF TRANSPORTATION</b>	<b>PLAN</b>		F.A.P. RTE.	SECTION	COUNTY	TOTAL SHEETS	SHEET NO.	
	PLOT SCALE = 100.0000' / in.	CHECKED -	REVISED -		<b>STA 77+00 TO STA -(8+00)</b>		331	(5-2,6,12-1)RS-3	JACKSON	27	14	
*MODELNAME#	PLOT DATE = 1/4/2013	DATE -	REVISED -		SCALE:	SHEET	OF	SHEETS	STA.	TO	STA.	ILLINOIS FED. AID PROJECT
<b>CONTRACT NO. 78331</b>												





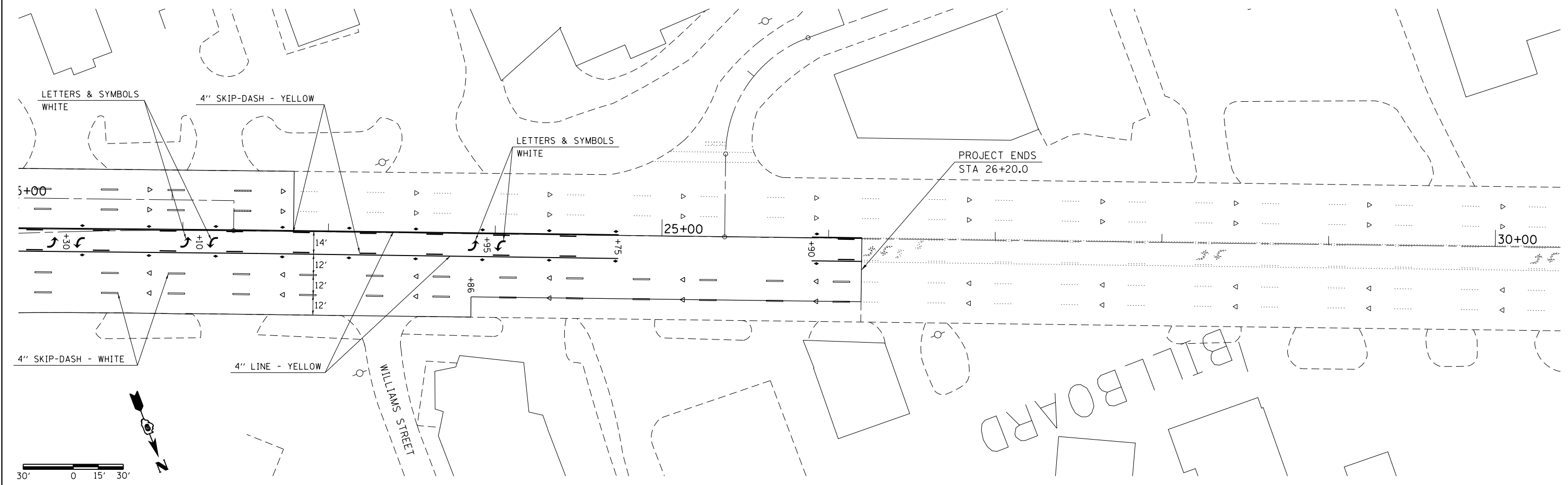
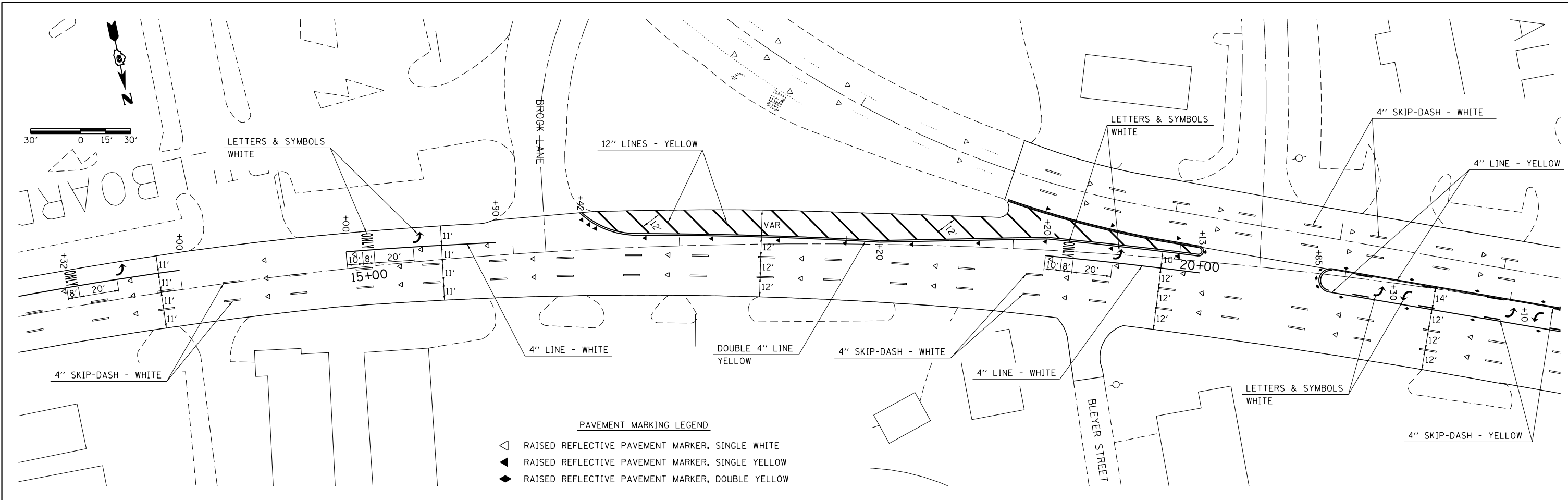
FILE NAME =	USER NAME = thomashf	DESIGNED -	REVISED -	<b>STATE OF ILLINOIS DEPARTMENT OF TRANSPORTATION</b>	<b>PLAN STA 3+00 TO STA 30+00</b>				F.A.P. RTE.	SECTION	COUNTY	TOTAL SHEETS	SHEET NO.
c:\pw\work\p1dot\thomashf\0315140\78331-shc-pln.dgn		DRAWN -	REVISED -		331	(5-2,6,12-1)RS-3	JACKSON	27	16				
Default	PLOT SCALE = 100.0000' / in.	CHECKED -	REVISED -		SCALE: SHEET OF SHEETS STA. TO STA.				CONTRACT NO. 78331				
	PLOT DATE = 4/25/2013	DATE -	REVISED -		ILLINOIS FED. AID PROJECT								





FILE NAME = c:\pwwork\pwwork\kellykd\0315140\7833\sho-pln.dgn	USER NAME = \$USER\$	DESIGNED -	REVISED -	<b>STATE OF ILLINOIS DEPARTMENT OF TRANSPORTATION</b>	<b>PAVEMENT MARKING PLAN STA 2+00 TO STA -(16+00)</b>		F.A.P. RTE. 331	SECTION (5-2,6,12-1)RS-3	COUNTY JACKSON	TOTAL SHEETS 27	SHEET NO. 17	
*MODELNAME*	PLOT DATE = 1/4/2013	DRAWN -	REVISED -		SCALE:	SHEET OF SHEETS	STA. TO STA.	CONTRACT NO. 78331				
		CHECKED -	REVISED -					ILLINOIS FED. AID PROJECT				
		DATE -	REVISED -									





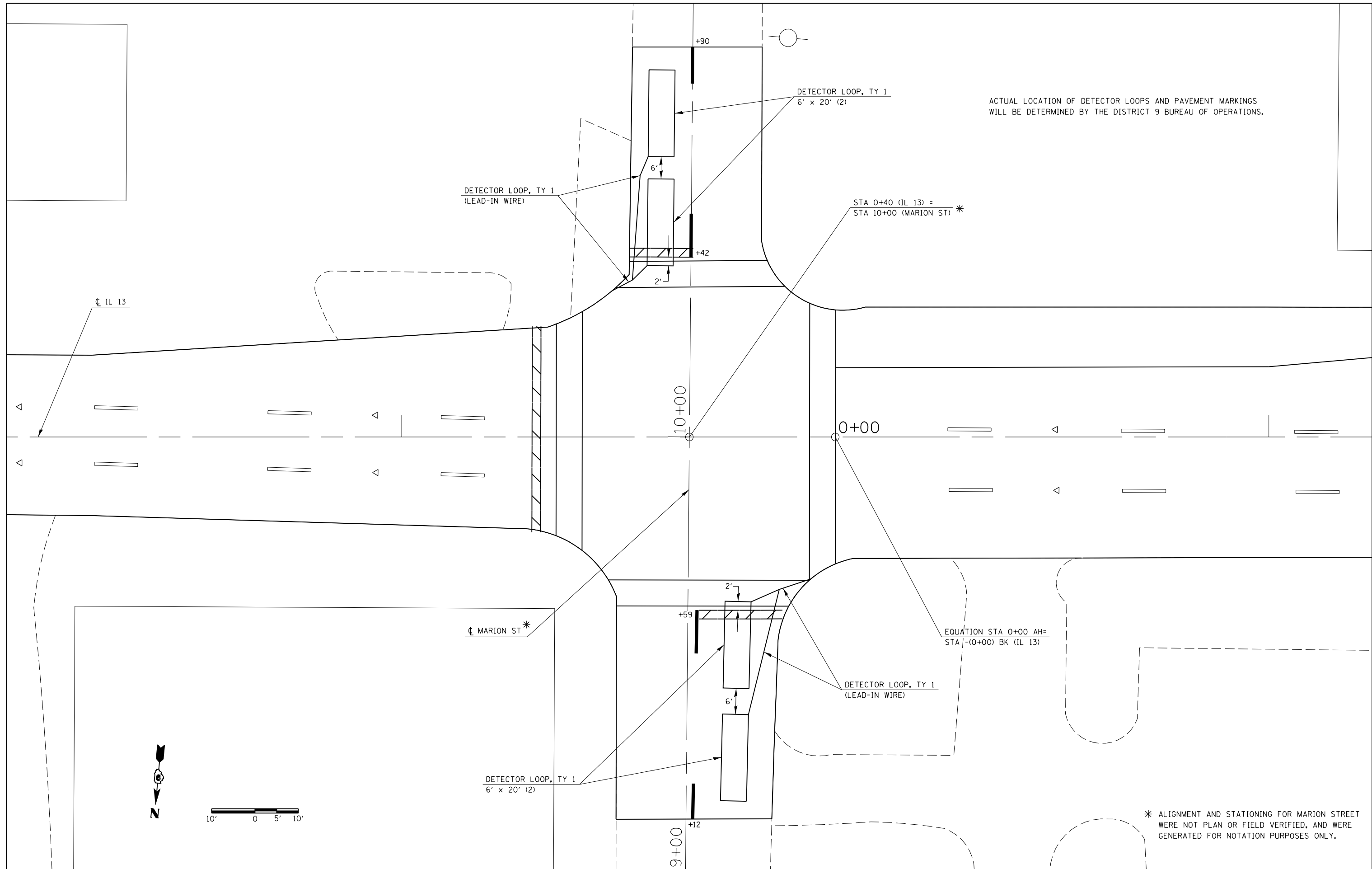
FILE NAME =	USER NAME = thomeshf	DESIGNED -	REVISED -
et:\pw\work\p\idot\thomeshf\10315140\78331-sh-to-pln.dgn		DRAWN -	REVISED -
Default	PLOT SCALE = 60.0000' / in.	CHECKED -	REVISED -
	PLOT DATE = 4/25/2013	DATE -	REVISED -

**STATE OF ILLINOIS  
DEPARTMENT OF TRANSPORTATION**

**PAVEMENT MARKING PLAN  
14+00 TO 30+00**

F.A.P. RTE.	SECTION	COUNTY	TOTAL SHEETS	SHEET NO.
331	(5-2,6,12-1)RS-3	JACKSON	27	19
CONTRACT NO. 78331				
ILLINOIS FED. AID PROJECT				

SCALE: SHEET OF SHEETS STA. TO STA.



ACTUAL LOCATION OF DETECTOR LOOPS AND PAVEMENT MARKINGS WILL BE DETERMINED BY THE DISTRICT 9 BUREAU OF OPERATIONS.

\* ALIGNMENT AND STATIONING FOR MARION STREET WERE NOT PLAN OR FIELD VERIFIED, AND WERE GENERATED FOR NOTATION PURPOSES ONLY.

FILE NAME =	USER NAME = #USER*	DESIGNED -	REVISED -
et:\pw\work\p\dot\k\elleykd\0315140\7833	-sh-to-pln.dgn	DRAWN -	REVISED -
	PLOT SCALE = 20.0000' / in.	CHECKED -	REVISED -
#MODELNAME*	PLOT DATE = 1/4/2013	DATE -	REVISED -

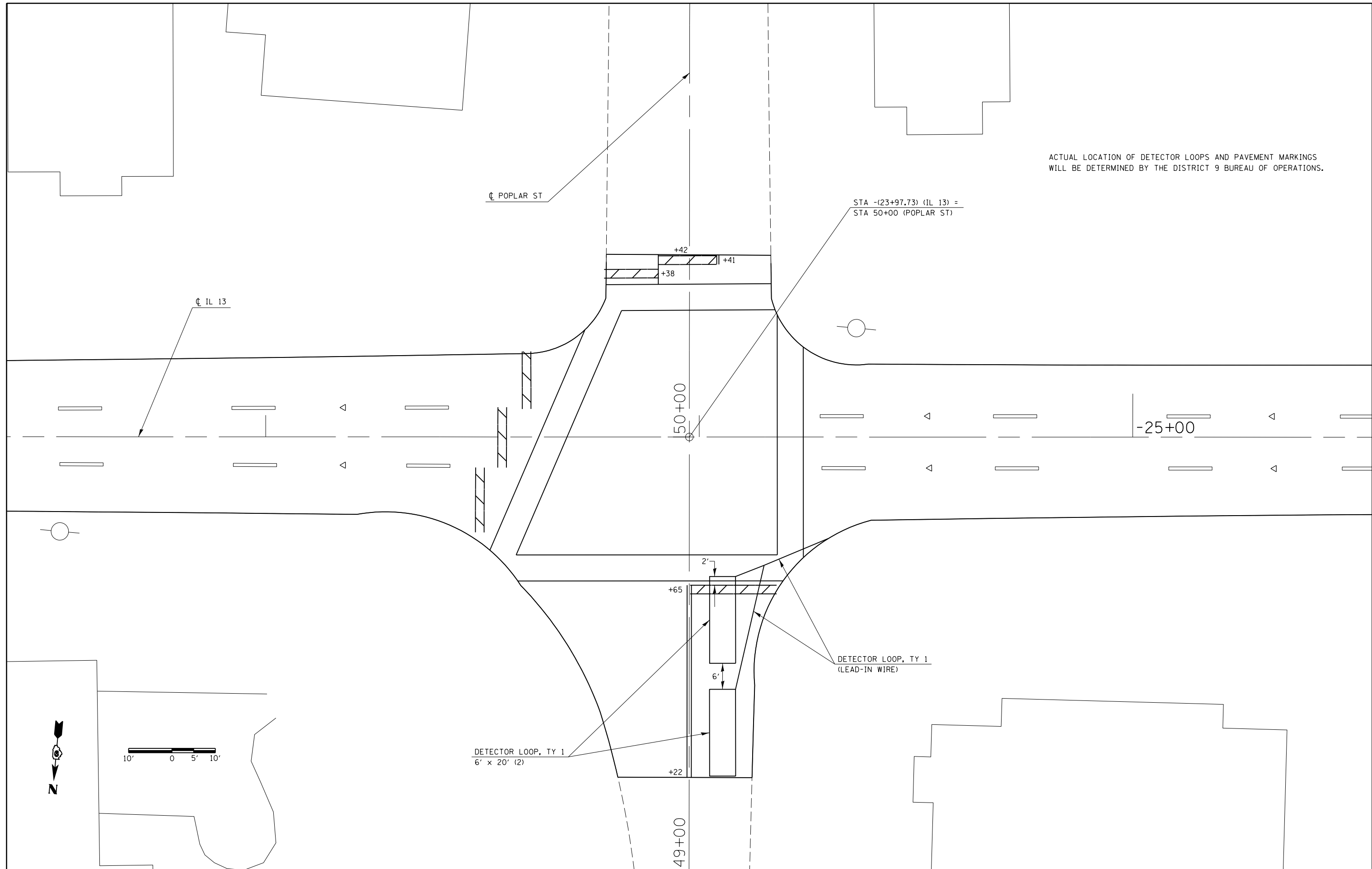
**STATE OF ILLINOIS  
DEPARTMENT OF TRANSPORTATION**

**INTERSECTION DETAILS  
MARION STREET**

SCALE: SHEET OF SHEETS STA. TO STA.

F.A.P. RTE.	SECTION	COUNTY	TOTAL SHEETS	SHEET NO.
331	(5-2,6,12-1)RS-3	JACKSON	27	20
CONTRACT NO. 78331				
ILLINOIS FED. AID PROJECT				

ACTUAL LOCATION OF DETECTOR LOOPS AND PAVEMENT MARKINGS  
WILL BE DETERMINED BY THE DISTRICT 9 BUREAU OF OPERATIONS.



FILE NAME =	USER NAME = #USER*	DESIGNED -	REVISED -
ct:\pw\work\p\dot\k\elleykd\0315140\7833	-sh-to-pln.dgn	DRAWN -	REVISED -
	PLOT SCALE = 20.0000' / in.	CHECKED -	REVISED -
#MODELNAME*	PLOT DATE = 1/4/2013	DATE -	REVISED -

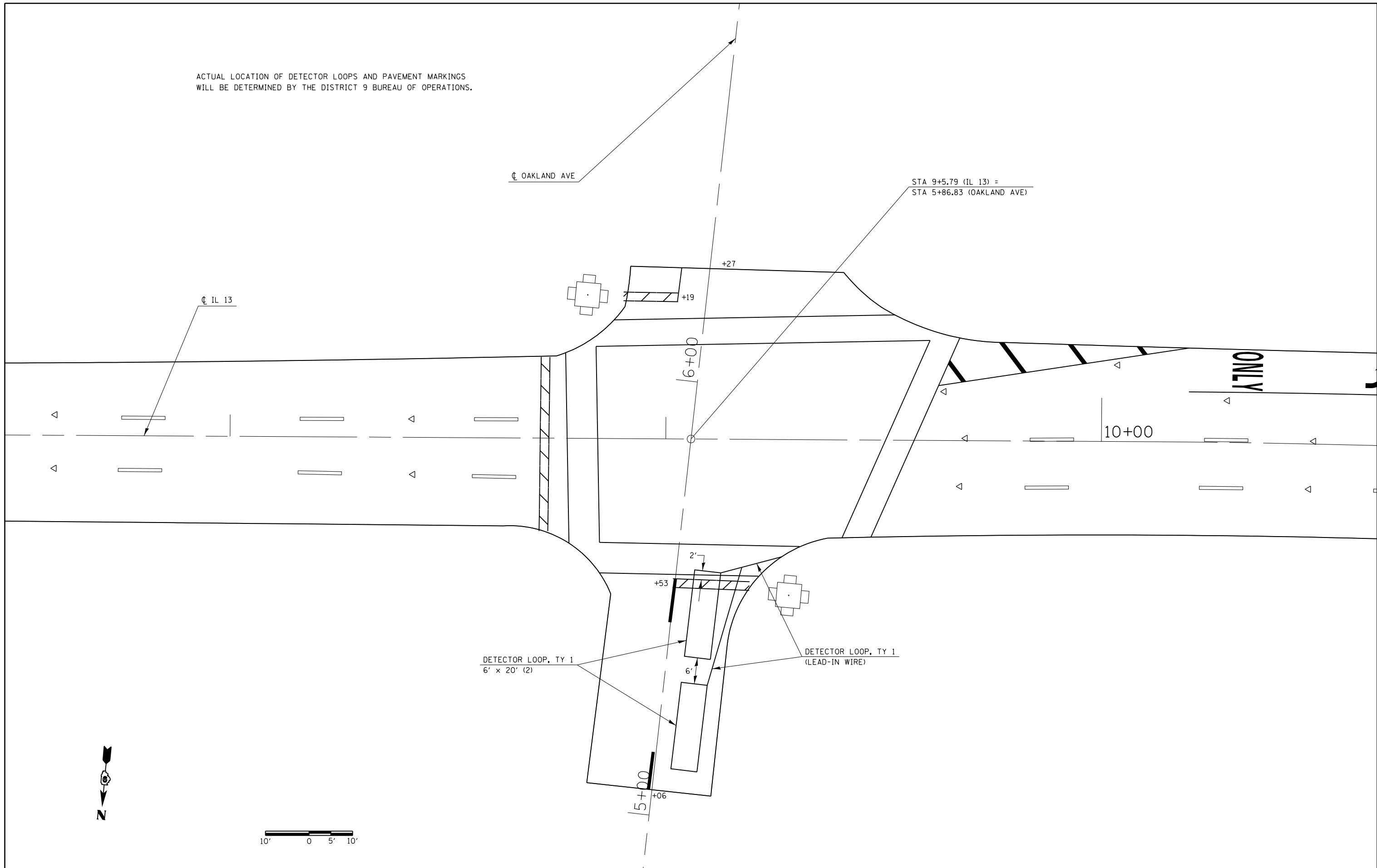
**STATE OF ILLINOIS  
DEPARTMENT OF TRANSPORTATION**

**INTERSECTION DETAILS  
POPLAR STREET**

SCALE: SHEET OF SHEETS STA. TO STA.

F.A.P. RTE.	SECTION	COUNTY	TOTAL SHEETS	SHEET NO.
331	(5-2,6,12-1)RS-3	JACKSON	27	21
CONTRACT NO. 78331				
ILLINOIS FED. AID PROJECT				

ACTUAL LOCATION OF DETECTOR LOOPS AND PAVEMENT MARKINGS  
WILL BE DETERMINED BY THE DISTRICT 9 BUREAU OF OPERATIONS.



FILE NAME =	USER NAME = \$USER\$	DESIGNED -	REVISED -
ct:\pw\work\p\dot\k\elleykd\0315140\7833	-sh-to-pln.dgn	DRAWN -	REVISED -
\$MODELNAME\$	PLOT SCALE = 20.0000' / in.	CHECKED -	REVISED -
	PLOT DATE = 1/4/2013	DATE -	REVISED -

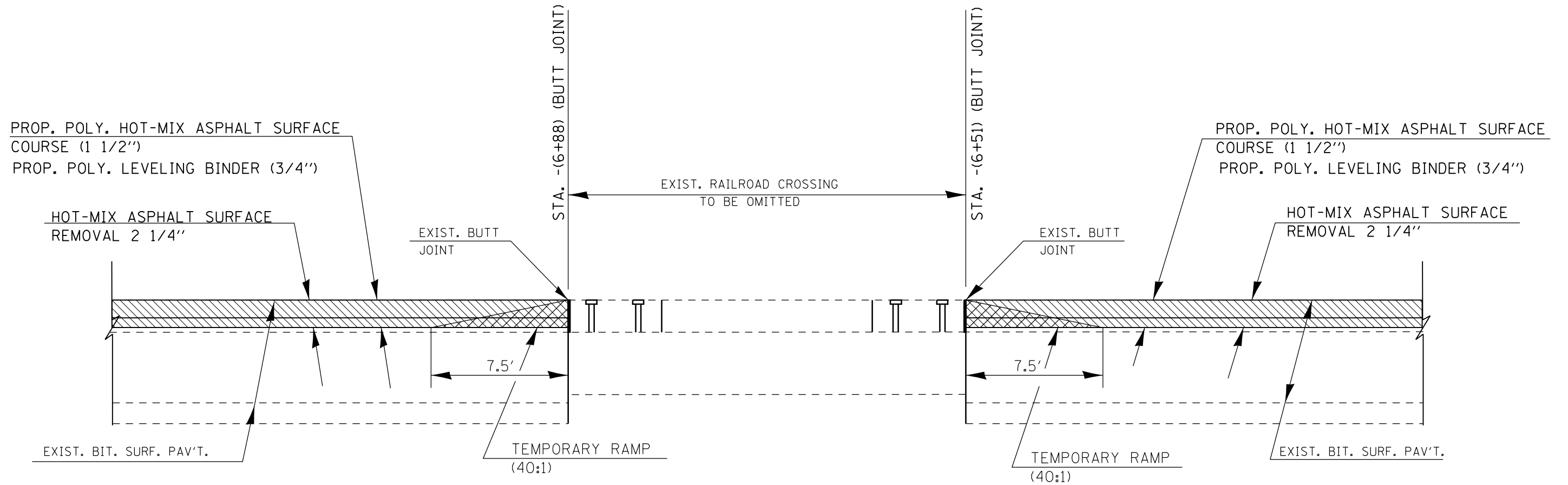
**STATE OF ILLINOIS  
DEPARTMENT OF TRANSPORTATION**

**INTERSECTION DETAILS  
OAKLAND AVENUE**

SCALE: SHEET OF SHEETS STA. TO STA.

F.A.P. RTE.	SECTION	COUNTY	TOTAL SHEETS	SHEET NO.
331	(5-2,6,12-1)RS-3	JACKSON	27	22
CONTRACT NO. 78331				
ILLINOIS FED. AID PROJECT				

BUTT JOINT DETAIL  
 AT CANADIAN NATIONAL/ILLINOIS CENTRAL  
 RAILROAD CROSSING  
 STA. -(6+51) TO STA. -(6+88)



FILE NAME =	USER NAME = \$USER\$	DESIGNED -	REVISED -
c:\pwork\pwork\kellykd\0315140\shtr	details.dgn	DRAWN -	REVISED -
\$MODELNAME\$	PLOT SCALE = 100.0000' / in.	CHECKED -	REVISED -
	PLOT DATE = 1/4/2013	DATE -	REVISED -

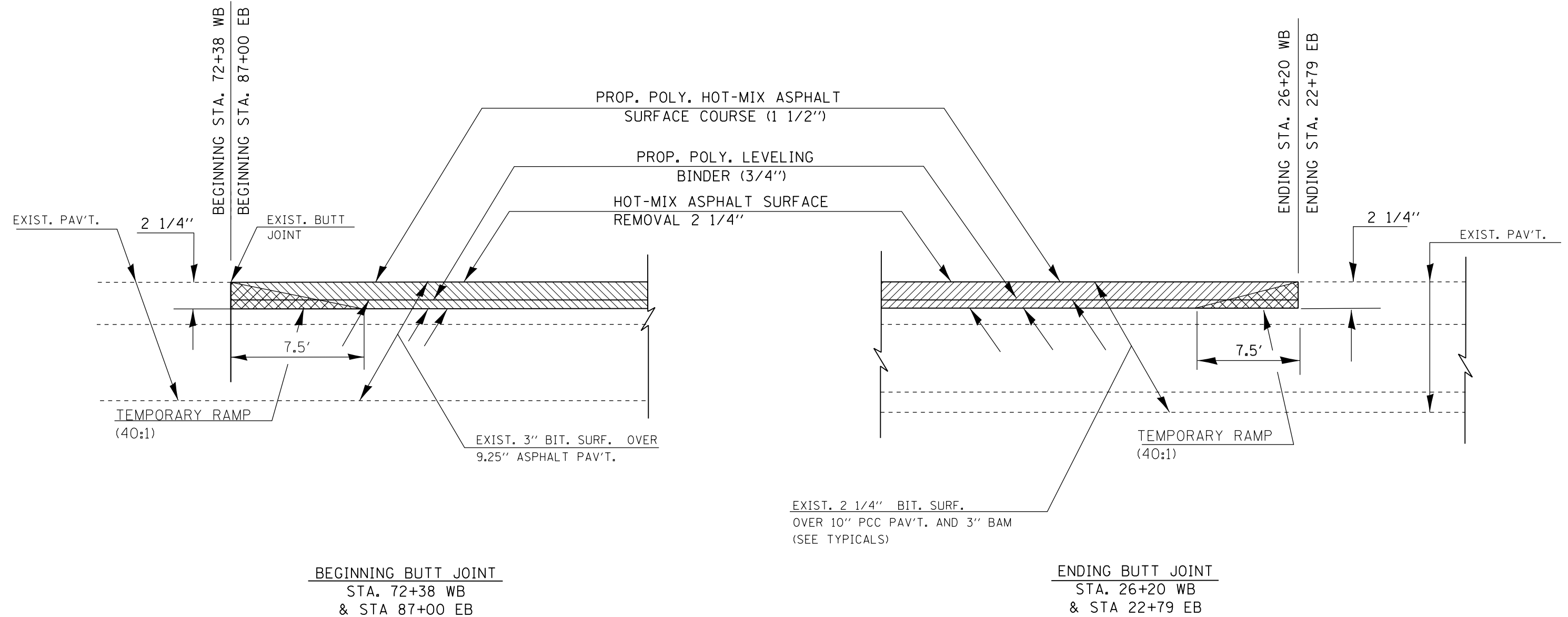
**STATE OF ILLINOIS  
 DEPARTMENT OF TRANSPORTATION**

**BUTT JOINT DETAIL AT  
 RAILROAD CROSSING**

SCALE:      SHEET      OF      SHEETS      STA.      TO      STA.

F.A. RTE.	SECTION	COUNTY	TOTAL SHEETS	SHEET NO.
331	(5-2,6,12-1)RS-3	JACKSON	27	23
CONTRACT NO. 78331				
ILLINOIS FED. AID PROJECT				

# DETAIL FOR BEGINNING AND ENDING BUTT JOINT



FILE NAME =	USER NAME = thomashf	DESIGNED -	REVISED -
c:\pwork\pwork\thomashf\d0315140\shht	details.dgn	DRAWN -	REVISED -
Default	PLOT SCALE = 100.0000' / in.	CHECKED -	REVISED -
	PLOT DATE = 4/25/2013	DATE -	REVISED -

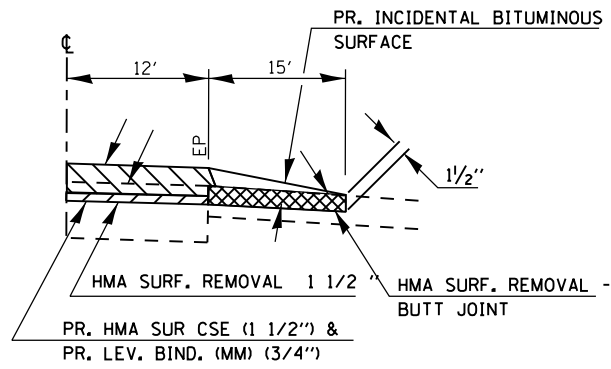
**STATE OF ILLINOIS  
DEPARTMENT OF TRANSPORTATION**

<b>DETAIL OF BUTT JOINT AT BEGINNING AND ENDING</b>			
SCALE:	SHEET	OF SHEETS	STA. TO STA.

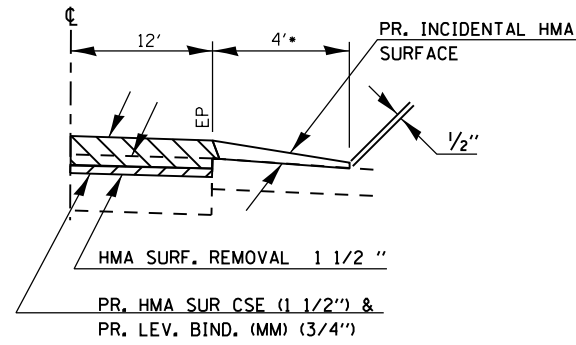
F.A. RTE.	SECTION	COUNTY	TOTAL SHEETS	SHEET NO.
331	(5-2,6,12-1)RS-3	JACKSON	27	24
CONTRACT NO. 78331				
ILLINOIS FED. AID PROJECT				



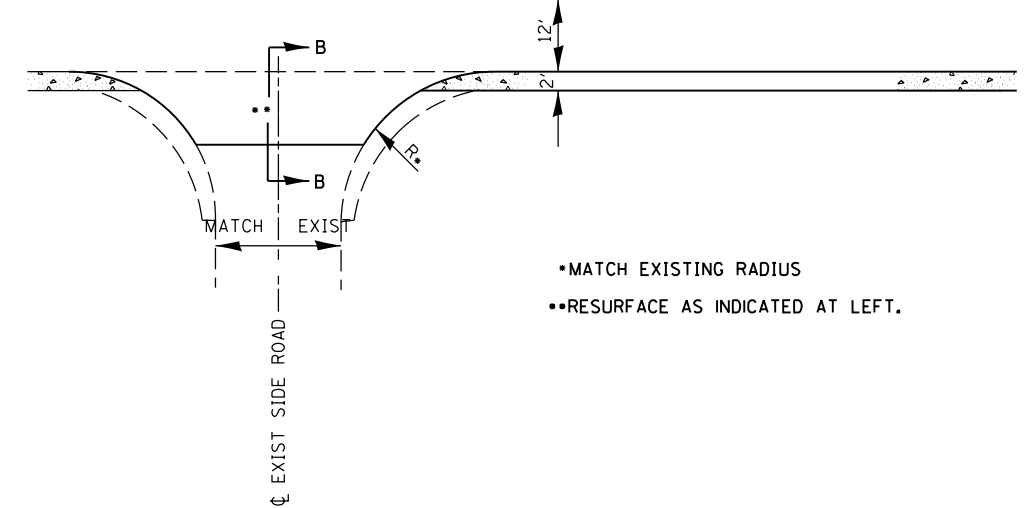
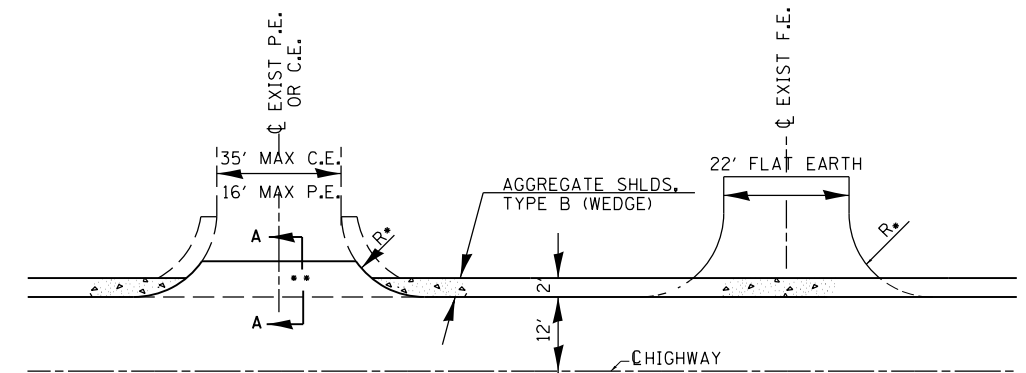
## SIDEROAD AND ENTRANCE DETAILS



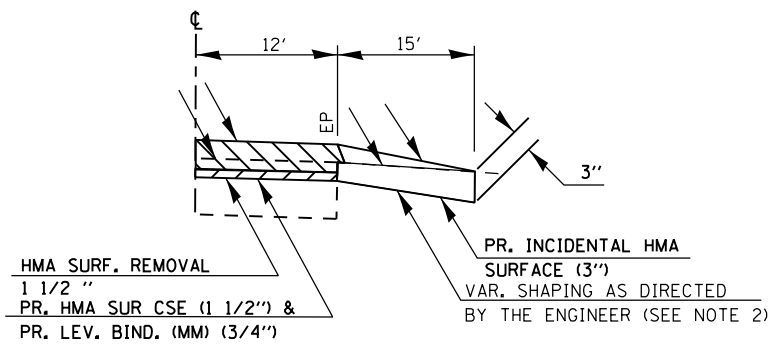
SIDE ROAD SEC. B-B  
EX. BIT. OR CONC. SURFACE



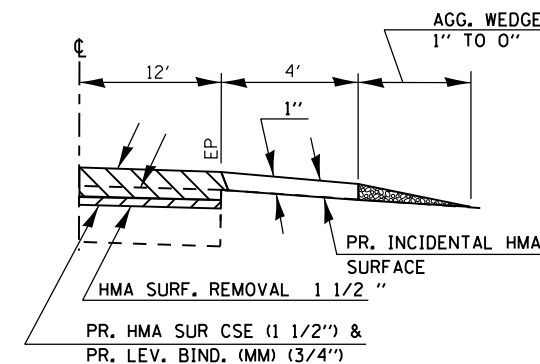
PE OR CE SEC. A-A  
EX. BIT. OR CONC. SURFACE  
•OR END OF BIT. APRON



- MATCH EXISTING RADIUS
- RESURFACE AS INDICATED AT LEFT.



SIDE ROAD SEC. B-B  
EX. AGGREGATE SURFACE  
(SEE NOTE 1)



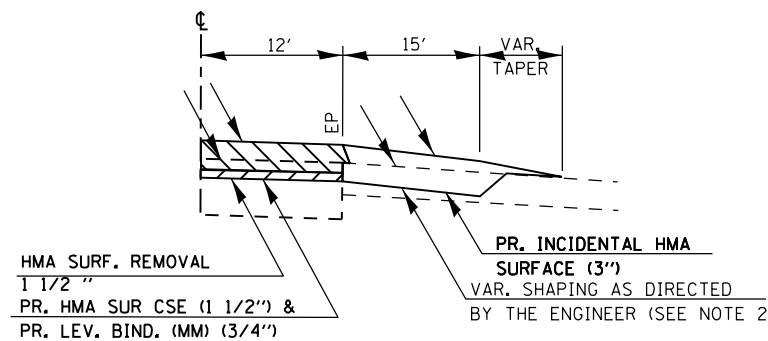
PE OR CE SEC. A-A  
EX. AGGREGTE SURFACE

### NOTES

1. IF EXISTING SUBBASE IS INADEQUATE, AS DETERMINED BY THE ENGINEER, THE SIDE ROADS SHALL BE CORED OUT AND AGGREGATE SUBBASE, TYPE B SHALL BE PLACED FOR BASE. THE COST OF CORING OUT THE SIDE ROAD AND ANY AGGREGATE BASE COURSE SHALL BE PAID FOR AS SPECIFIED IN ART. 109.04 OF THE STANDARD SPECIFICATIONS FOR ROAD AND BRIDGE CONSTRUCTION. IF EXISTING SUBBASE IS DETERMINED TO BE ADEQUATE, THE PREPARATION OF THE BASE SHALL BE CONSTRUCTED ACCORDING TO ARTICLE 406.19.
2. VARIABLE SHAPING IS INCLUDED IN THE COST OF INCIDENTAL HOT-MIX ASPHALT SURFACE.

### ENTRANCE SCHEDULE

TYPE	NUMBER OF ENTRANCES
S.R.	25



SIDE ROAD SEC. B-B  
EX. OIL & CHIP SURFACE  
(SEE NOTE 1)

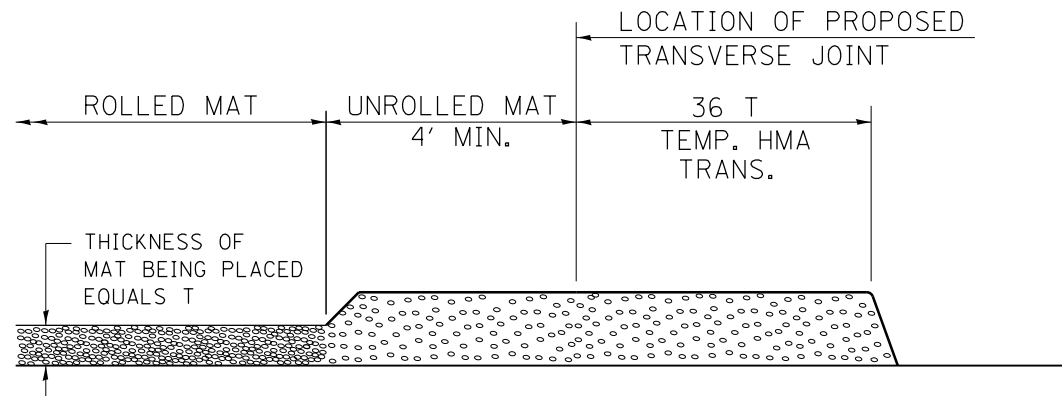
FILE NAME =	USER NAME = \$USER\$	DESIGNED -	REVISED -
c:\pwwork\pwwork\kellykd\0315140\sh...	details.dgn	DRAWN -	REVISED -
\$MODELNAME\$	PLOT SCALE = 100.0000' / 1in.	CHECKED -	REVISED -
	PLOT DATE = 1/4/2013	DATE -	REVISED -

**STATE OF ILLINOIS  
DEPARTMENT OF TRANSPORTATION**

<b>SIDE ROAD AND ENTRANCE DETAILS</b>	
SCALE:	SHEET OF SHEETS STA. TO STA.

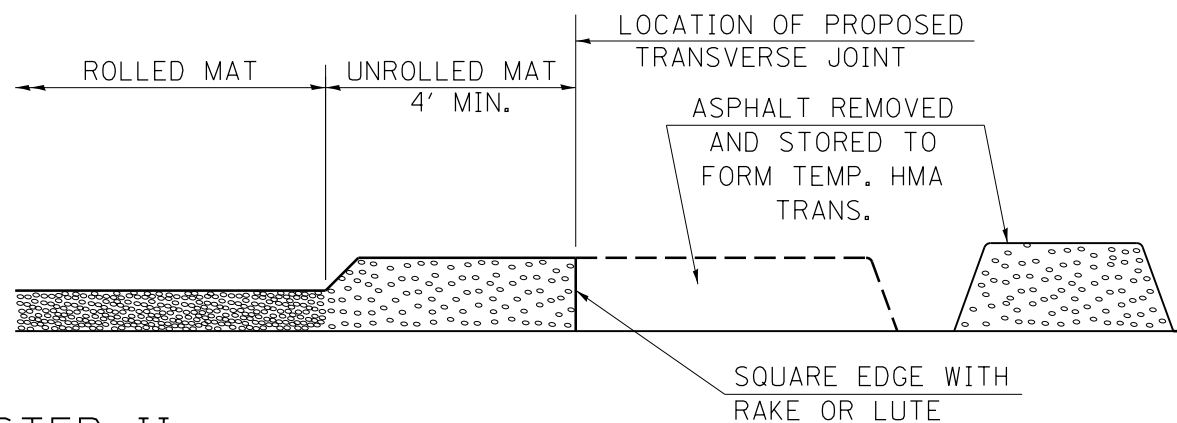
F.A. RTE.	SECTION	COUNTY	TOTAL SHEETS	SHEET NO.
331	(5-2,6,12-1)RS-3	JACKSON	27	25
CONTRACT NO. 78331				
ILLINOIS FED. AID PROJECT				

# TEMPORARY HOT-MIX ASPHALT TRANSITIONS



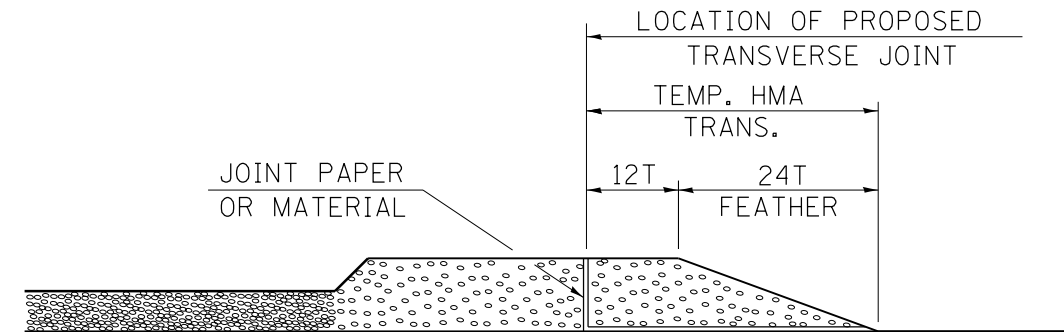
## STEP I

1. PLACE HOT-MIX ASPHALT MAT, LENGTH 36 TIMES THE THICKNESS OF THE MAT BEING PLACED PAST THE PROPOSED TRANSVERSE JOINT LOCATION USING NORMAL OPERATING PROCEDURES.
2. EXTREME CARE SHOULD BE TAKEN TO MAINTAIN ENOUGH MATERIAL IN FRONT OF THE SCREED TO MAINTAIN REQUIRED PAVING DEPTH.



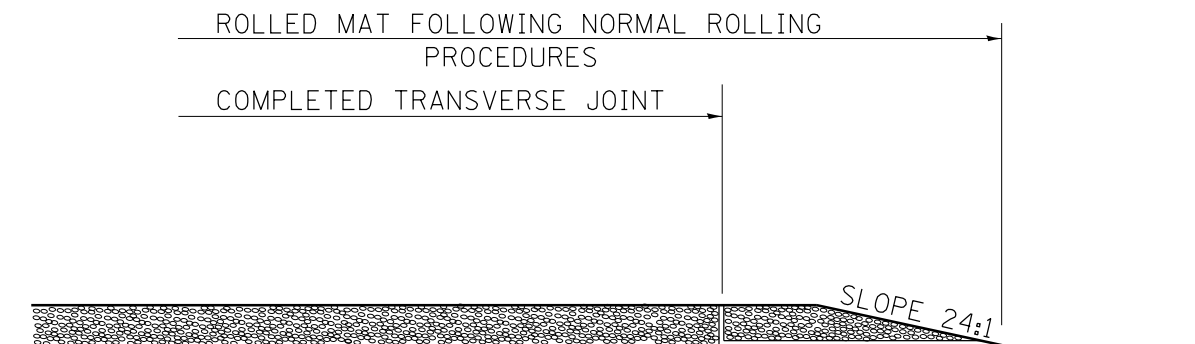
## STEP II

1. MOVE THE PAVER OUT OF THE WAY AND REMOVE THE ASPHALT FROM THE AREA OF THE PROPOSED TEMPORARY HOT-MIX ASPHALT TRANSITION.
2. SQUARE UP THE END OF THE MAT WITH A RAKE OR LUTE.
3. NOTE THAT THE MAT WITHIN 4' OF THE END OF JOINT IS NOT TO BE ROLLED AT THIS TIME.



## STEP III

1. JOINT PAPER OR OTHER PRESELECTED JOINT MATERIAL IS THEN PLACED IN THE CLEARED AREA AND THE EXCESS ASPHALT USED TO HAND FORM A TRANSITION TO THE DIMENSIONS SHOWN ABOVE.
2. NOTE THAT IN CONSTRUCTING THE TRANSITION, THE MAT DEPTH IS CONTINUED AS PART OF THE TRANSITION BEFORE FORMING THE FEATHER.



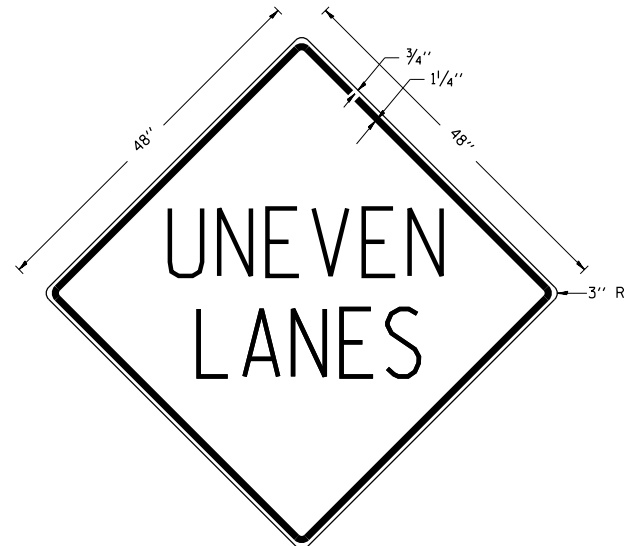
## STEP IV

1. COMPLETE TEMPORARY TRANSITION BY ROLLING.
2. TO RESUME PAVING, AT THE JOINT, REMOVE TEMPORARY TRANSITION AND DISPOSE OF THE MATERIAL ACCORDING TO ART. 202.03 OF THE STD. SPECS. (COST INCLUDED IN THE CONTRACT).
3. CONSTRUCTING THE TEMPORARY TRANSITIONS WILL NOT BE PAID FOR SEPARATELY IN ACCORDANCE WITH ARTICLE 406.14 OF THE STANDARD SPECIFICATIONS.

REVISIONS	
REDRAWN	2-15-89
REVISED	8-16-94
REVISED	01-09-07

STD. 9-26

**UNEVEN LANES SIGN**  
W8-11 (48" x 48")



**COLORS:**  
LEGEND AND BORDER - BLACK NON-REFLECTORIZED  
BACKGROUND - ORANGE REFLECTORIZED

**NOTE:** PRIOR TO ALLOWING TRAFFIC ON ANY PORTION OF THE ROADWAY THAT HAS BEEN COLDMILLED OR BEFORE RESURFACING OPERATIONS BEGIN, THE CONTRACTOR SHALL HAVE ERECTED "UNEVEN PAVEMENT" SIGNS THAT CONFORM TO THE ABOVE DETAILS. A MINIMUM OF ONE SIGN AT EACH END OF THE IMPROVEMENT WILL BE REQUIRED. THE CONTRACTOR SHALL MAINTAIN THE "UNEVEN PAVEMENT" SIGNS UNTIL THE RESURFACING OPERATIONS ARE COMPLETED.

IF AT ANY TIME THE SIGNS ARE IN PLACE BUT NOT APPLICABLE, THEY SHALL BE TURNED FROM THE VIEW OF MOTORISTS OR COVERED AS DIRECTED BY THE ENGINEER.

THE COST OF FURNISHING, ERECTING, MAINTAINING, AND REMOVING THE REQUIRED SIGNS SHALL BE INCLUDED IN THE CONTRACT.

REVISIONS	
DRAWN	2-15-89
REVISED	4-6-93
REVISIONED	7-23-04
REVISED	

STD. 9-41

**DETAIL OF DETECTOR LOOPS**

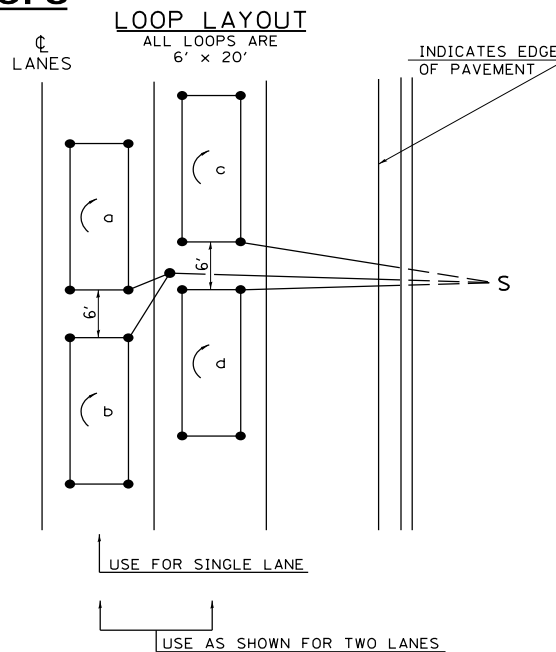
**NOTES**

(APPLIES TO 6' x 20' LOOPS ONLY)

1. THE DETECTOR LOOPS SHALL BE TYPE I. EACH DETECTOR LOOP SHALL HAVE 3 TURNS OF LOOP WIRE AND BE INSTALLED IN ACCORDANCE WITH THE APPLICABLE PORTIONS OF SECTION 886 OF THE STANDARD SPECIFICATIONS FOR TRAFFIC CONTROL ITEMS.
2. BEGINNING LEAD WIRES SHALL BE CONNECTED TO THE BLACK LEAD AND THE ENDING LEAD WIRES SHALL BE CONNECTED TO THE WHITE LEAD OF THE TWIN TWISTED FEED CABLES AT THE SPLICE POINT.
3. WHERE THE LOOPS ARE INSTALLED PRIOR TO RESURFACING, THE LOOP CORNERS SHALL BE DIAGONALLY CUT.

**LOOP LEGEND**

- ( ) CLOCKWISE ROTATION FOR LOOP WIRES
- S INDICATES SPLICE POINT FOR DETECTOR LOOP LEAD
- INDICATES 2" CORE-DRILL

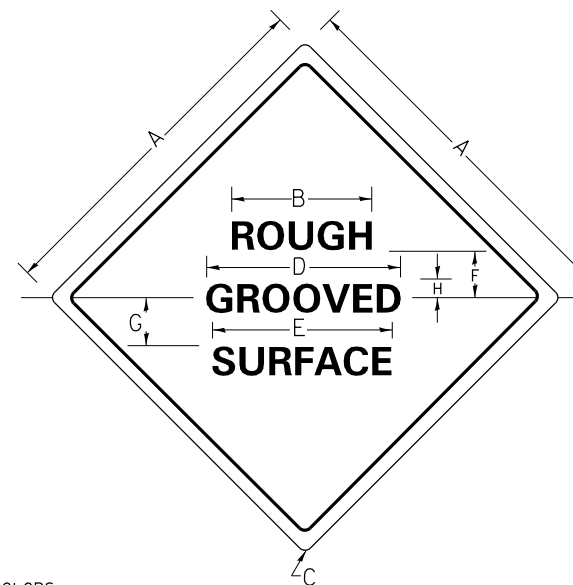


DETAIL 6' x 20' DETECTOR LOOPS

REVISIONS	
REDRAWN	5-13-02
REVISED	10-27-05
REVISED	3-26-08
REDRAWN	3-16-11

STD. 9-92

**ILLINOIS STANDARD**  
W8-I106



**COLORS:**  
LEGEND AND BORDER BLACK NON-REFLECTORIZED  
BACKGROUND ORANGE REFLECTORIZED

SIGN SIZE	DIMENSIONS							
	A	B	C	D	E	F	G	H
48x48	48.0	24.1	3.0	34.0	33.0	6.0	13.0	3.5

SIGN SIZE	SERIES LINES			MAR-GIN	BOR-DER	BLANK STD.
	1	2	3			
48x48	7C	7C	7C	0.8	1.2	B4-48D

**NOTE:** PRIOR TO ALLOWING TRAFFIC ON ANY PORTION OF THE ROADWAY THAT HAS BEEN COLDMILLED, THE CONTRACTOR SHALL HAVE ERECTED "ROUGH GROOVED SURFACE" SIGNS THAT CONFORM TO THE ABOVE DETAILS. A MINIMUM OF ONE SIGN AT EACH END OF THE IMPROVEMENT WILL BE REQUIRED. THE CONTRACTOR SHALL MAINTAIN THE "ROUGH GROOVED SURFACE" SIGNS UNTIL THE COLDMILLED SURFACE IS COVERED WITH LEVELING BINDER OR SURFACE COARSE.

IF AT ANY TIME THE SIGNS ARE IN PLACE BUT NOT APPLICABLE, THEY SHALL BE TURNED FROM THE VIEW OF MOTORISTS OR COVERED AS DIRECTED BY THE ENGINEER.

THE COST OF FURNISHING, ERECTING, MAINTAINING, AND REMOVING THE REQUIRED SIGNS SHALL BE INCLUDED IN THE CONTRACT.

ALL DIMENSIONS ARE IN INCHES UNLESS OTHERWISE NOTED.

REVISIONS	
REDRAWN	10-23-01
STD.	9-39

FILE NAME =	USER NAME = \$USER\$	DESIGNED -	REVISED -
et:\pw\work\p\dot\k\elleyk\d0315140\shtr\details.dgn		DRAWN -	REVISED -
\$MODELNAME\$	PLOT SCALE = 100.0000' / 1in.	CHECKED -	REVISED -
	PLOT DATE = 1/4/2013	DATE -	REVISED -

STATE OF ILLINOIS  
DEPARTMENT OF TRANSPORTATION

UNEVEN LANE SIGN;  
ROUGH GROOVED SURFACE SIGN

SCALE: SHEET OF SHEETS STA. TO STA.

F.A. RTE.	SECTION	COUNTY	TOTAL SHEETS	SHEET NO.
331	(5-2,6,12-1)RS-3	JACKSON	27	27
CONTRACT NO. 78331				
ILLINOIS FED. AID PROJECT				