

STATE OF ILLINOIS
DEPARTMENT OF TRANSPORTATION
DIVISION OF HIGHWAYS

**PROPOSED
HIGHWAY PLANS**

F.A.P. 873 IL ROUTE 149
SECTION 105RS-3
PROJECT F-0873(033)
3P RESURFACING
FRANKLIN COUNTY

C-99-028-13

F.A.P. RTE.	SECTION	COUNTY	TOTAL SHEETS	SHEET NO.
873	105RS-3	FRANKLIN	19	1
ILLINOIS			CONTRACT NO. 78358	

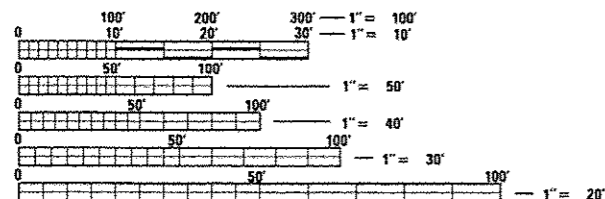
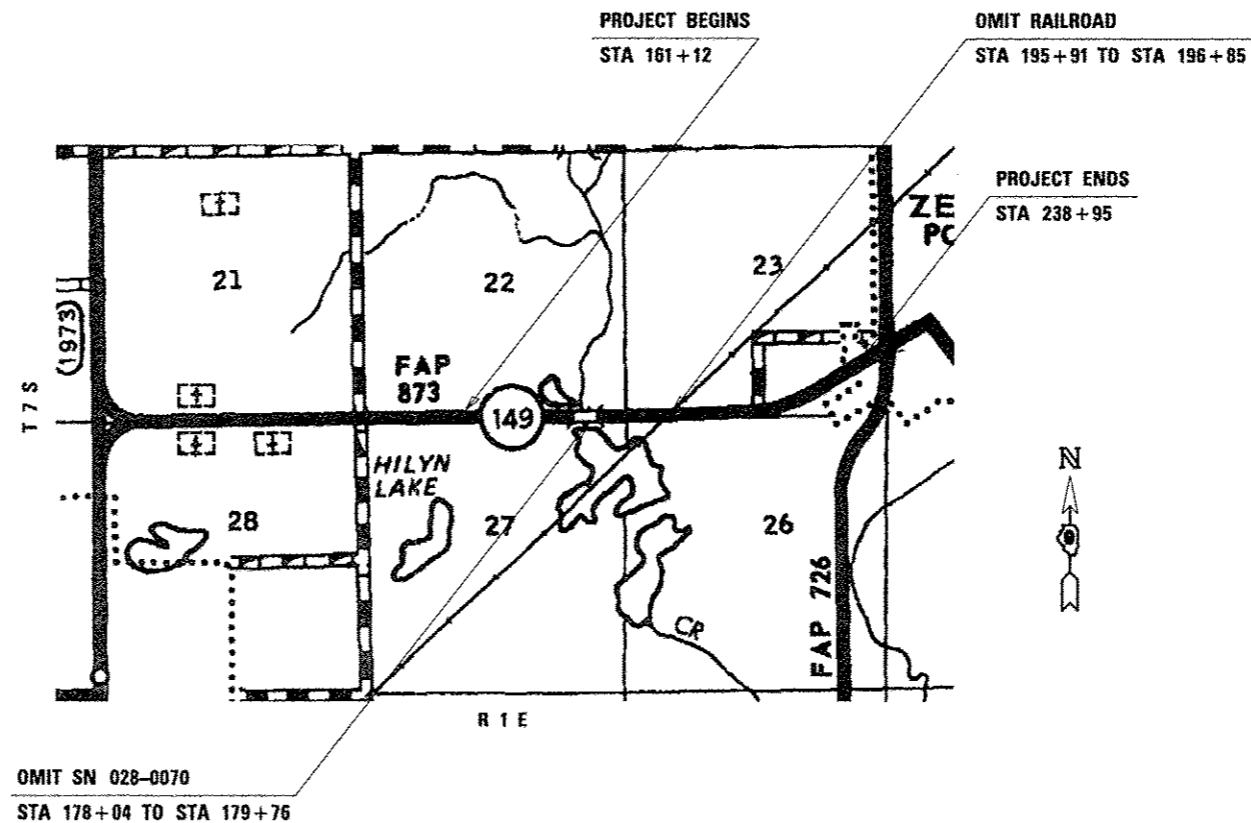
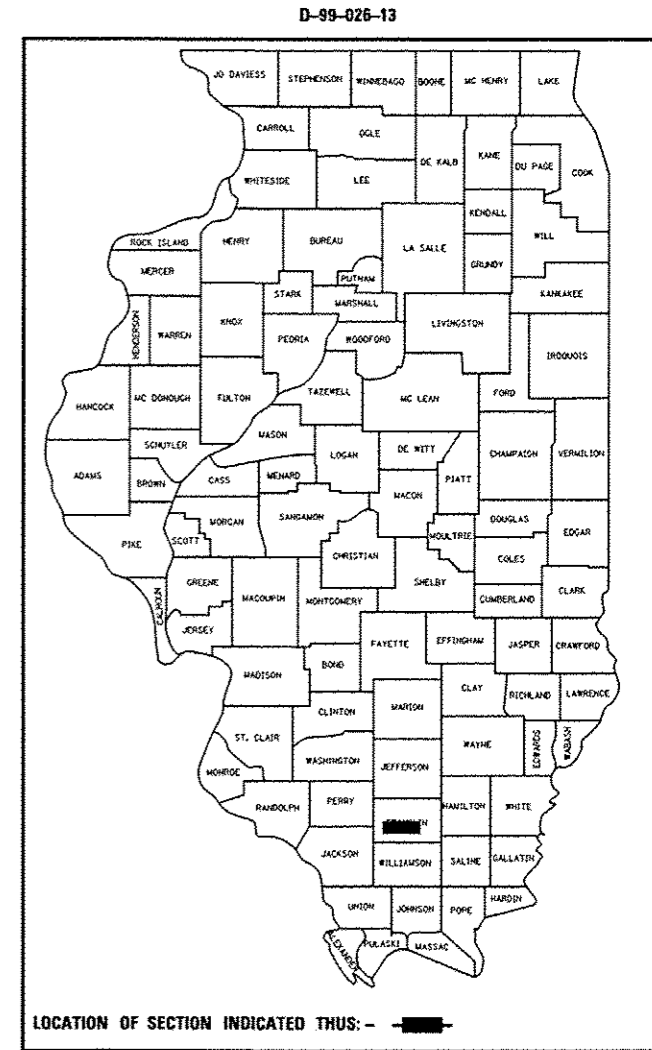
FOR INDEX OF SHEETS, SEE SHEET NO. 2

TRAFFIC DATA

IL 149 TRAFFIC DATA
2013 ADT = 3,010 WITH 5% TRUCKS
2033 ADT = 3,670 WITH 5% TRUCKS

TOWNSHIP

SIX MILE



FULL SIZE PLANS HAVE BEEN PREPARED USING STANDARD ENGINEERING SCALES. REDUCED SIZED PLANS WILL NOT CONFORM TO STANDARD SCALES. IN MAKING MEASUREMENTS ON REDUCED PLANS, THE ABOVE SCALES MAY BE USED.

J.U.L.I.E.
JOINT UTILITY LOCATION INFORMATION FOR EXCAVATION
1-800-892-0123
OR 811

PROJECT ENGINEER PAULA STOVER
PROJECT MANAGER CHARLES STEIN

CONTRACT NO. 78358

GROSS LENGTH = 7,783 FT = 1.47 MILE
NET LENGTH = 7,517 FT = 1.42 MILE

STATE OF ILLINOIS
DEPARTMENT OF TRANSPORTATION
DIVISION OF HIGHWAYS

SUBMITTED *March 22 2013*
Jeffrey L. Keim
DEPUTY DIRECTOR OF HIGHWAYS, REGION ENGINEER

May 10 2013
John D. Baranzelli, PE, Inc.
acting ENGINEER OF DESIGN AND ENVIRONMENT

May 10 2013
Omer Osman, PE, Inc.
DIRECTOR OF HIGHWAYS, CHIEF ENGINEER

**PRINTED BY THE AUTHORITY
OF THE STATE OF ILLINOIS**